

ALLDAYS
COMMERCIAL
CARS



ALLDAYS COMMERCIAL CARS

CATALOGUE No. 114.

MANUFACTURED
BY

All Previous Lists are hereby Cancelled.

ALLDAYS & ONIONS Pneumatic Engineering Co. LD.

CONTRACTORS TO H.M. GOVERNMENT,

MATCHLESS WORKS & GREAT WESTERN WORKS,
Adjoining Small Heath Station (G.W.R.)

Established
1650.

BIRMINGHAM.

Telegraphic Address:

Works - "Matchless, Birmingham."
London - "Typhoon, London."
Liverpool - "Alldays, Liverpool."

CODE,
A.B.C., 5th EDITION.



LONDON:
58, HOLBORN VIADUCT.
Offices, Showrooms, Garage and Repair Works.



Telephone Nos.:

Works - Victoria 487 (5 lines).
London - Holborn 5948.
Liverpool - Royal 2426.

Cable Code Address:
"ALLDAYS, BIRMINGHAM."

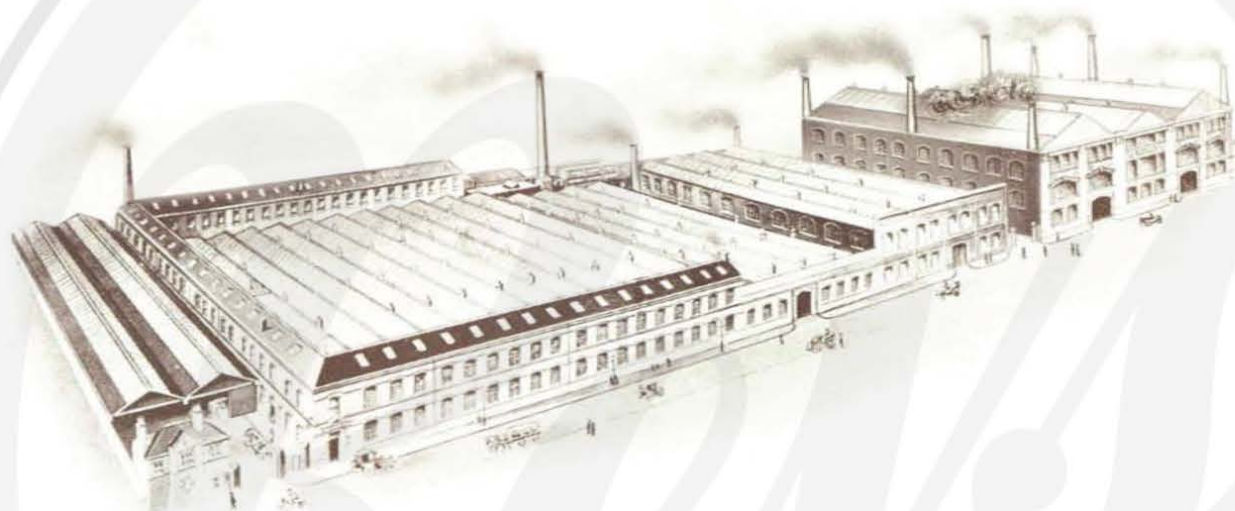


LIVERPOOL:
53, RENSHAW STREET.
Offices and Showrooms.

This Catalogue and the prices contained therein are subject to alteration without notice, and illustrations are not binding as to details.



ALLDAYS COMMERCIAL CARS

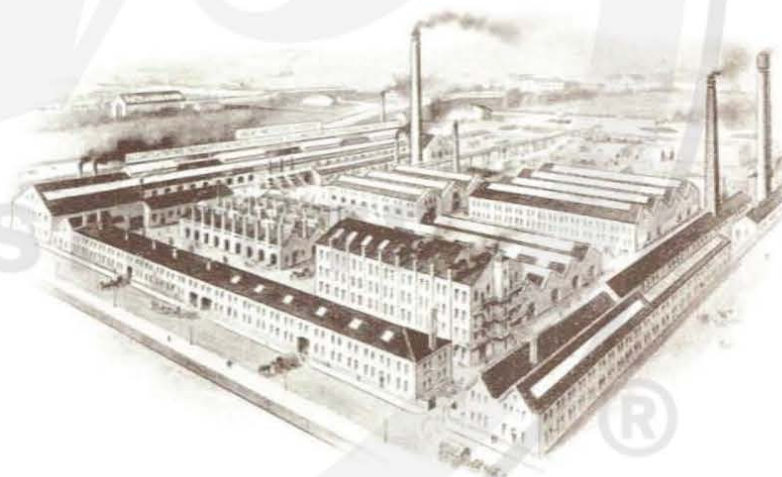


**MATCHLESS WORKS,
BIRMINGHAM,**

where
ALLDAYS & ONIONS
COMMERCIAL
STANDARDISED
CARS & LORRIES
ARE BUILT THROUGHOUT

**GREAT WESTERN WORKS,
BIRMINGHAM,**

where
ALLDAYS & ONIONS
SPECIALITIES AND
ENGINEERING GOODS
ARE MADE



INS

®

ALLDAYS COMMERCIAL CARS



FOR GENERAL CONSTRUCTION,
NEATNESS OF DESIGN,
AND
SMOOTHNESS OF RUNNING.



GOLD MEDAL.

HIGHEST AWARDS EACH TIME of EXHIBITING,
from the FIRST LONDON, 1851, to the PARIS, 1889;
and at BRISBANE EXHIBITION, 1897, and
CHRISTCHURCH EXHIBITION, NEW ZEALAND,
1907.



GOLD MEDAL.



SILVER MEDAL AWARDED
BY THE AUTOMOBILE CLUB
OF GREAT BRITAIN,
SEPTEMBER, 1904.

FOREWORD.

HAVING for the past 14 years seriously applied ourselves to the designing and manufacture of Commercial Vehicles, we are now in a position to offer the widest range of vehicles suitable for all methods of transport, each type of machine being specially designed, dimensioned, and constructed for the particular motor traction it is intended to be used for.

We invite the earnest consideration of all prospective purchasers of commercial vehicles to the claims of the ALLDAY productions. We are quite sure, from our long experience as general and special engineers, and having been connected with automobile manufacture since its inception in this country, of our ability to produce the highest class quality of vehicle, efficient in every working detail, and to give a durability equal to any that can be manufactured.

In conjunction with this special knowledge, we possess the advantage of having facilities and factories to manufacture more of the commercial vehicles than the bulk of our competitors. This enables us to offer our machines at reasonable prices, and give the best quality. The specifications and illustrations we give in this catalogue represent our standard models, but we invite enquiries for any kind of motor traction for any requirements or conditions.

In conclusion, we are gratified to state that we built the first Railless Electric Chassis ever manufactured, or run on the roads of Great Britain. This establishes indubitably our wide experience and our ability to build vehicles for road and rail motor traction of any description.

ALLDAYS COMMERCIAL CARS

General Description.

ENGINES.—These are all of the vertical type, and are manufactured throughout in our own Works. In designing these engines our aim has been absolute reliability, combined with durability, efficiency, and smooth running.

The cylinders of all engines are in pairs. They are cast in our own foundry, of a special mixture of selected brands of iron.

The crankcases are of aluminium, and are designed to allow of the lower half being easily removed for inspection purposes, the main bearings being carried by the upper half. The crankshafts are high-tensile alloy steel, machined all over and balanced to afford the smoothest possible running. The connecting rods are 1 section drop forgings. The pistons are of hard close-grained cast iron, and are fitted with three rings. The valves are made from a special steel. All valve tappets are adjustable, and with the exception of the 10 12 H.P. two-cylinder engine, all valve stems and tappets are enclosed by easily detachable covers. The lubrication is on the most approved forced feed system. The oil supply is contained in a reservoir formed with the lower half of the crankcase, and is drawn

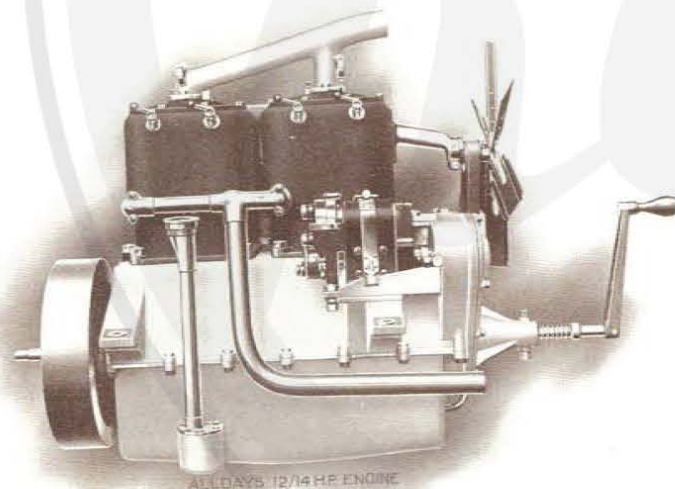


ALLDAYS 30/40 H.P. CRANKSHAFT, ETC

through a filter and forced by a rotary gear wheel pump direct to the main bearings, and then through ducts drilled in the crankshaft to the connecting rod bearings. A relief valve is included in the system to prevent the oil pressure rising above the pre-determined point when the engine is accelerated. A pressure gauge, placed in a convenient position on the dash, enables the driver to see at a glance if the system is working properly.

CARBURETTORS.—The Carburettors we fit are of the float feed spray type, and are what we have found to give the best all round results with our engines.

IGNITION.—High-tension magneto ignition is fitted as standard. Dual ignition can be fitted if required at a small extra cost.



ALLDAYS 12/14 H.P. ENGINE



ALLDAYS 30/40 H.P. CAMSHAFT

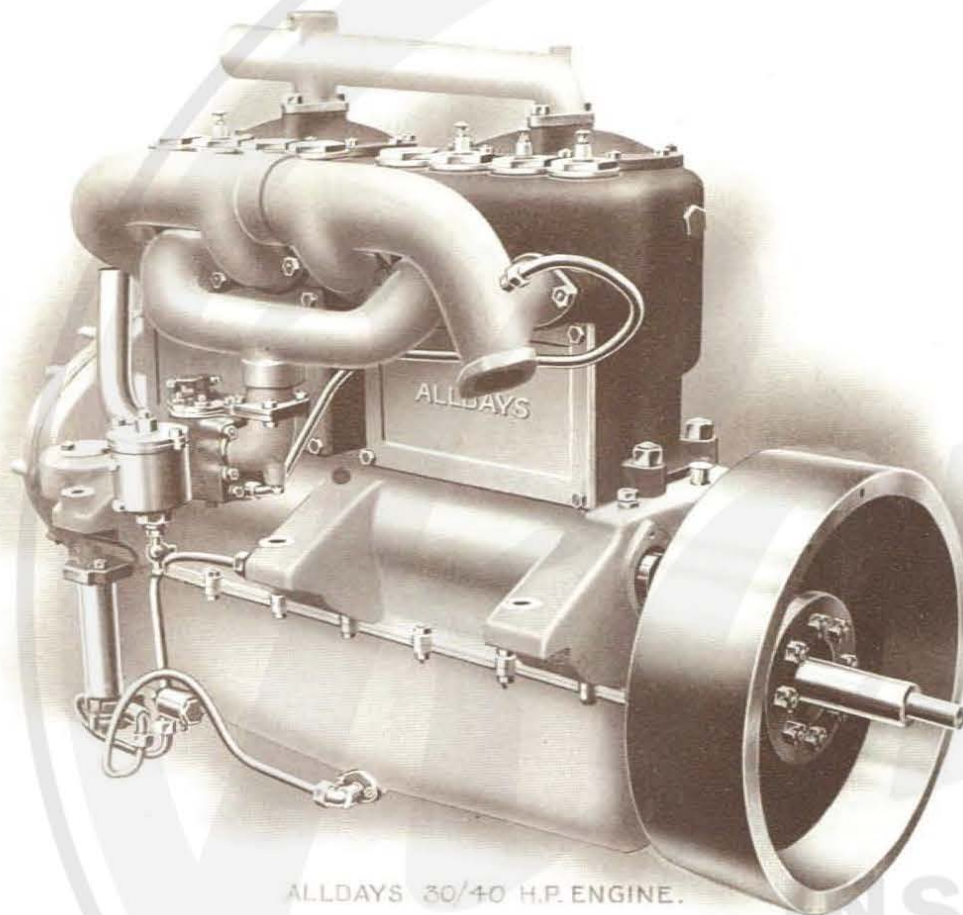
ALLDAYS COMMERCIAL CARS

General Description

continued.

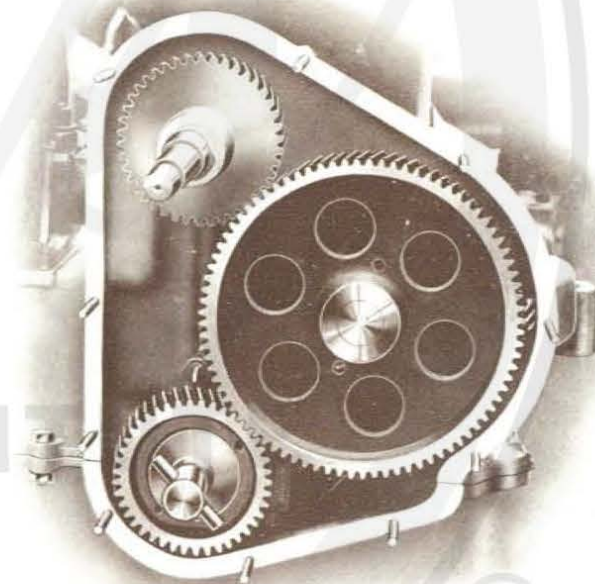
COOLING.—The radiators are of the vertical gilled tube type, as we have found these radiators are less liable to give trouble through leakage, etc., than other types. Thermo-syphon circulation is standard, but the heavier vehicles can be fitted with a pump should the conditions under which they are run be exceptionally severe.

A Fan is fitted to assist the draught of air through the radiator.



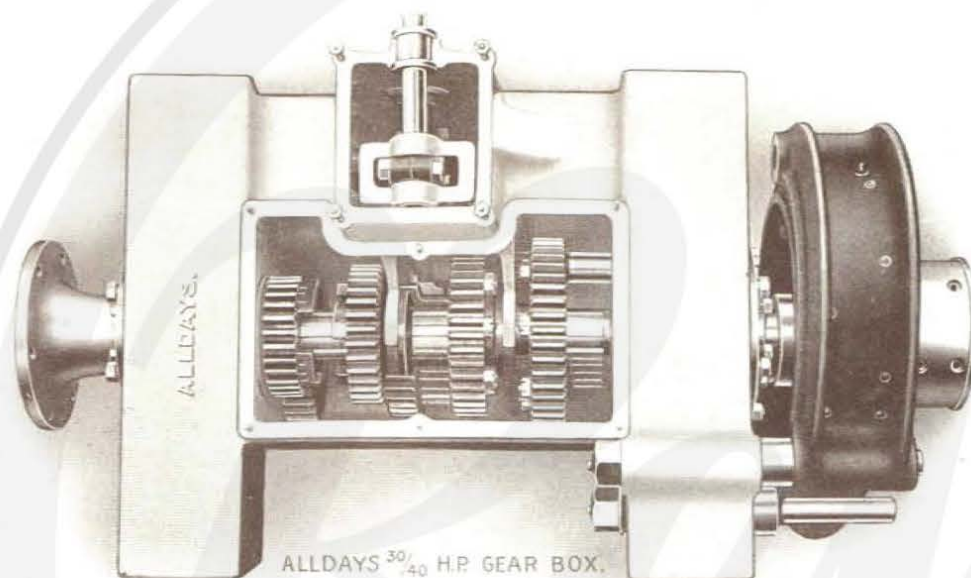
ALLDAYS 30/40 H.P. ENGINE.

TRANSMISSION.—Through cone clutch and universally-jointed shaft to the gear box. In the vehicles for light loads, a cardan shaft drive and light axle is used, and in the heavier vehicles the drive is through an independent countershaft and side chains. Where chains are used they are protected by strong metal dust-proof cases.



ALLDAYS 30/40 H.P. TIMING GEAR.®

ALLDAYS COMMERCIAL CARS



ALLDAYS 30/40 H.P. GEAR BOX.

COUNTERSHAFT.—The countershafts on the chain-driven vehicles are entirely enclosed, and are carried in brackets attached to the side members of the main frame. The bevel gears and differential are of special alloy steel, accurately cut and hardened. The shafts are of special alloy steel. Ball bearings are fitted throughout.

CHAIN CASES.—These are exceptionally strong, and free from rattle. The one side is a steel plate, which maintains the rear axle in correct relative position, and the remaining side is formed of two aluminium castings which are bolted to the steel plate. Doors are provided in the sides, to enable the chains to be examined.

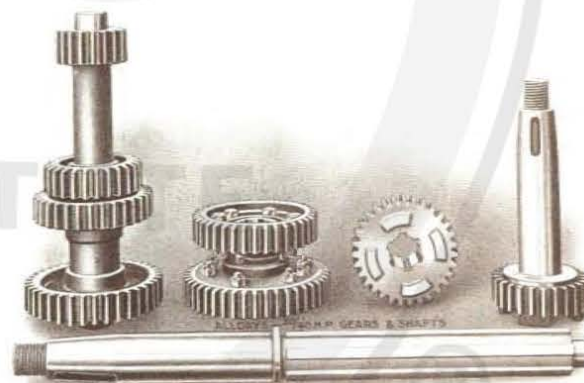
AXLES.—The front axles are all forged in one piece, without a weld. The stub axles are of special steel. They are fitted with hard phosphor bronze bushes, and turn on hardened steel swivel pins. Ball thrust bearings are provided to take the load, in order to afford light and easy steering.

General Description

—continued.

CLUTCH.—All our clutches are of the leather-to-metal cone type, and auxiliary springs are fitted underneath the leather to afford a smooth and easy engagement.

GEAR BOX.—Our gear boxes are all cast in one piece, so that oil leakage is reduced to a minimum, and all are provided with large inspection covers. The gears are of special steel, accurately cut and hardened. The gears are operated by a lever working in a "gate" quadrant. The feathers or keys on the sliding gear shaft, are cut from the solid by special machinery, ensuring accuracy and durability. The shafts are of ample section, and run on ball bearings.



ALLDAYS COMMERCIAL CARS

General Description

—continued.

The live axles on the lighter vehicles have bevel differentials, mounted on ball bearings, and are provided with double ball thrust bearings. All gears are of special alloy steel, accurately cut and hardened. The driving shafts are of high tensile alloy steel, and the axles are arranged so that the load is carried on extensions of casing.

WHEELS, &c.—On the lighter vehicles the wheels are artillery type, with oak spokes and ash felloes, while on the heavier vehicles steel wheels are supplied.

The tyres fitted are in all cases of ample size to carry the maximum loads for which the vehicles are built.

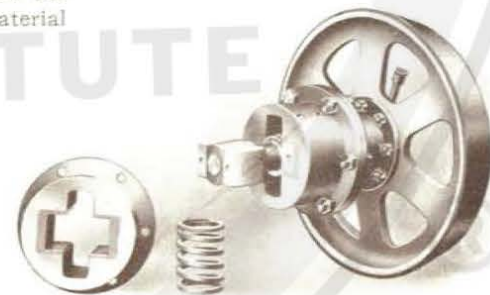
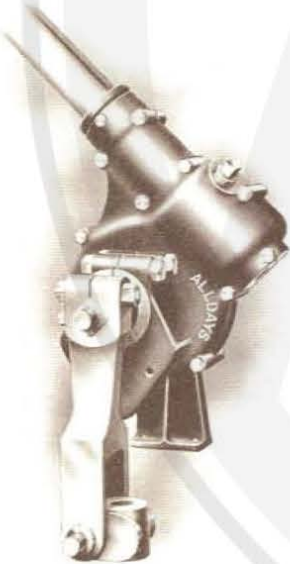
STEERING GEAR.—The steering gears on all vehicles are of the irreversible worm type. Ball thrust bearings are provided for the worm, and means are provided for taking up slackness. In the 3 to 5-ton vehicles a complete worm wheel is used, allowing new teeth to be brought into mesh when worn.

BRAKES.—Care has been taken to ensure efficient brakes and also to give them sufficient area to ensure durability. The foot brake is of the external type, acting on a drum at the rear of the gear box. The rear wheel brakes are of the internal expanding type, operated by hand lever, and compensated.

Both brakes are arranged for adjustment by hand. Every care is taken in the selection and treatment of the material used in these vehicles to ensure the maximum reliability and durability.



ALLDAYS 30/40 H.P. COUNTERSHAFT



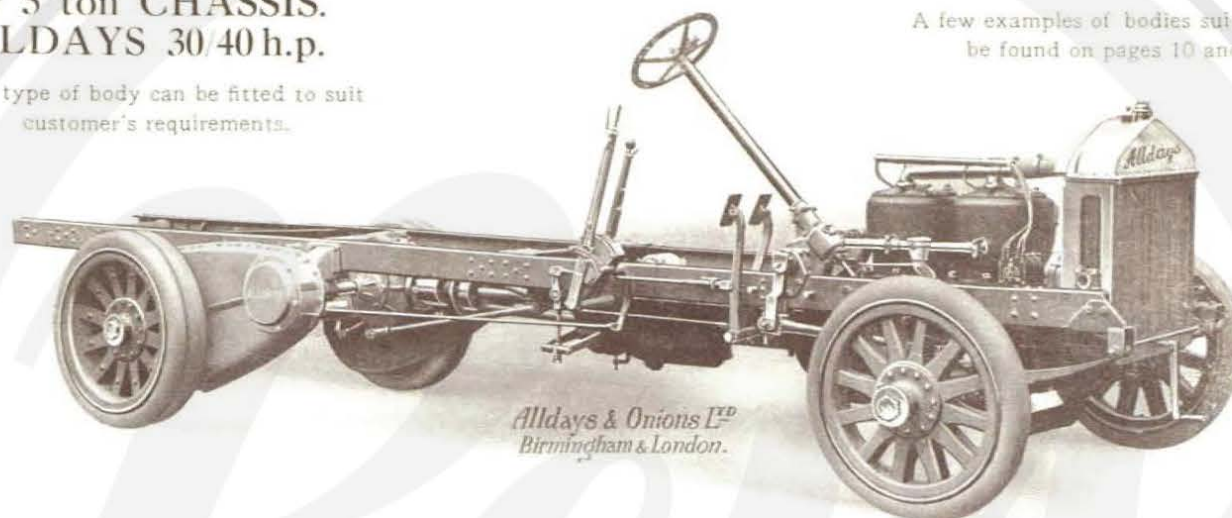
ALLDAYS 30/40 H.P. COUNTERSHAFT

ALLDAYS COMMERCIAL CARS

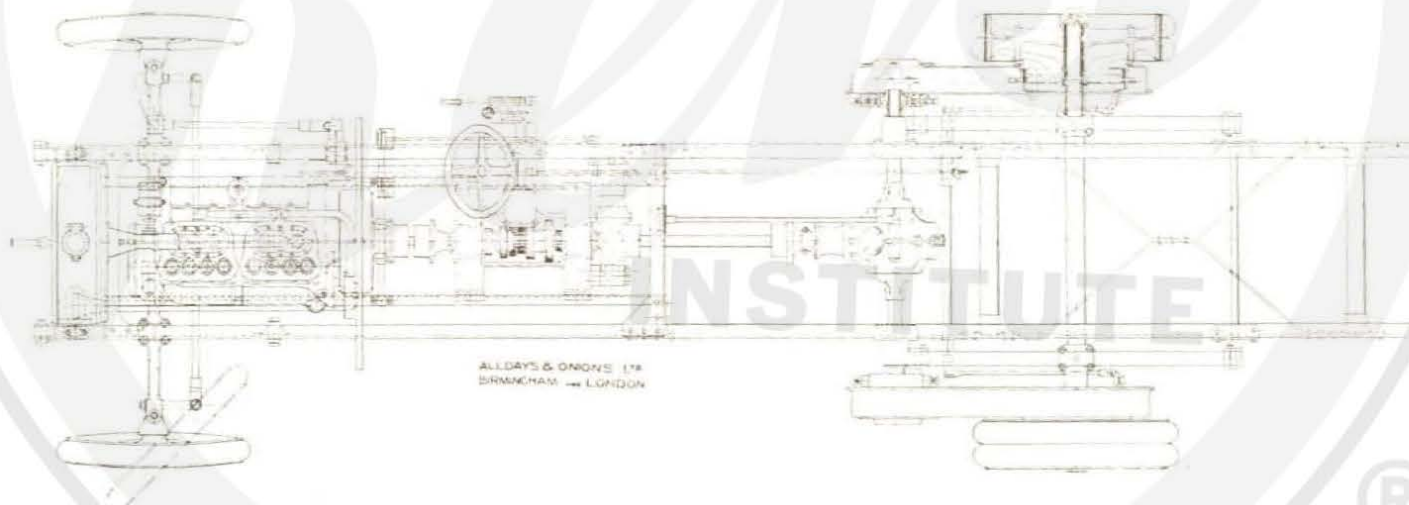
3 & 5 ton CHASSIS. ALLDAYS 30/40 h.p.

Any type of body can be fitted to suit
customer's requirements.

A few examples of bodies suitable will
be found on pages 10 and 11.



*Alldays & Onions Ltd
Birmingham & London.*



3 ton Chassis, as illustrated above, complete with Solid Rubber Tyres -

5 ton Chassis -



ALLDAYS COMMERCIAL CARS

Specification of 30/40 h.p. 3 and 5 ton Chassis.

FRAME . . .	Rolled steel, channel section.	SPRINGS . . .	Half-elliptic at front and rear, of best quality spring steel, oil tempered.						
ENGINE . . .	Alldays vertical 4-cylinder engine. 4 $\frac{3}{4}$ in. bore \times 5 $\frac{1}{2}$ in. stroke, with valve stems and tappets enclosed. R.A.C. rating, 36-1	TYRES . . .	The front wheels of 3 and 5 ton Chassis are fitted with 34in. \times 4in. single solid rubber tyres, and the rear wheels of 3 ton with 36in. \times 4 $\frac{1}{2}$ in. twin solid rubber tyres, and 36in. \times 5 $\frac{1}{2}$ in. twin solid rubber tyres to 5 ton Chassis, of best quality.						
LUBRICATION	Forced lubrication to crankshaft, connecting rod, gudgeon pin and camshaft bearings. An accessible oil filler and level gauge is provided.	BODY . . .	Of best material throughout, with ash framing. The roof is of best pine or white wood in narrow strips, tongued and grooved, and covered with best roofing canvas bedded in white lead. Or any type of body to suit customer's requirements can be fitted.						
CARBURETTOR	Latest type W. & P.	PAINTING . . .	The body is properly prepared, filled, rubbed down, painted in approved colour, and finished in best manner with two coats of best hard carriage varnish.						
IGNITION . . .	By Bosch high tension dual magneto.	LETTERING . . .	To order, extra.						
CONTROL . . .	The throttle and ignition are controlled by levers on a quadrant above the steering wheel.	DIMENSIONS . . .	Length behind driver's seat inside, 12ft.; Width inside, to order; Height inside, to order; Length overall, 20ft. 3in.; Width overall, 7ft. 2in.; Wheelbase, 13ft. 6in.; Wheeltrack, 6ft.						
COOLING . . .	By vertical gilled tube radiator, with cast aluminium headers. Cooling is assisted by a Fan. Thermo-syphon circulation. A pump can be fitted for exceptionally heavy duty.	SHIPPING DIMENSIONS (APPROX.) OF CHASSIS.	Length, 20ft. 10in.; Width, 7ft. 8in.; Height, 4ft. 6in.						
GEAR BOX . . .	One-piece gear box, with large inspection cover. Four speeds forward and one reverse are provided, operated by a lever with a "gate" quadrant. The shafts are mounted on ball bearings.	WEIGHTS (APPROX.)	<table><tr><td></td><td>T. C. Q.</td><td>T. G. Q.</td></tr><tr><td>Nett.</td><td>3 1 0</td><td>Gross, 4 7 0</td></tr></table>		T. C. Q.	T. G. Q.	Nett.	3 1 0	Gross, 4 7 0
	T. C. Q.	T. G. Q.							
Nett.	3 1 0	Gross, 4 7 0							
TRANSMISSION	From gear box to rear wheels through self-contained countershaft and roller chains. The chains run in oil-retaining metal cases.								
WHEELS . . .	Best quality cast steel.								

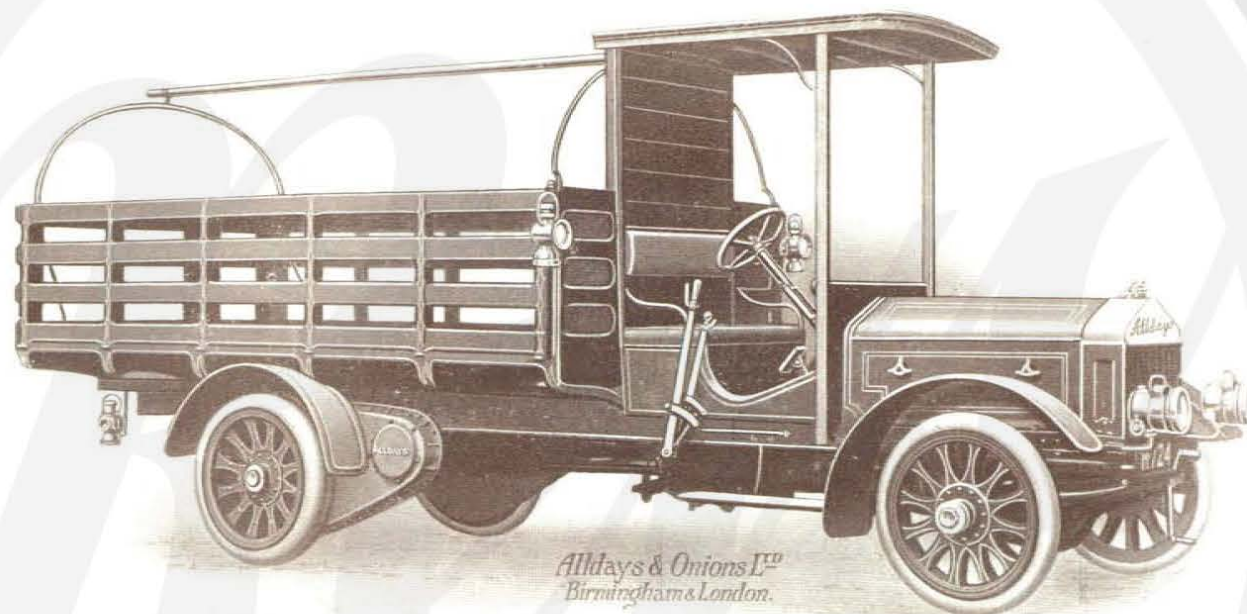
3 Ton Chassis only, complete with Tyres	CODE WORD - UCASS.
5 Ton Chassis only,	"	"	...	CODE WORD - UTON.
No. 403—3 Ton Delivery Van, complete as above, with Box Body	CODE WORD - UVAN.
No. 405—5 Ton Delivery Van,	"	"	"	CODE WORD - UBOX.

Any type of body to suit customer's requirements can be supplied. Illustrations and estimates will be sent on application.



ALLDAYS COMMERCIAL CARS

Alldays 3 and 5 ton Lorries.



The above Lorry is fitted with hinged and detachable sides and tail-board.

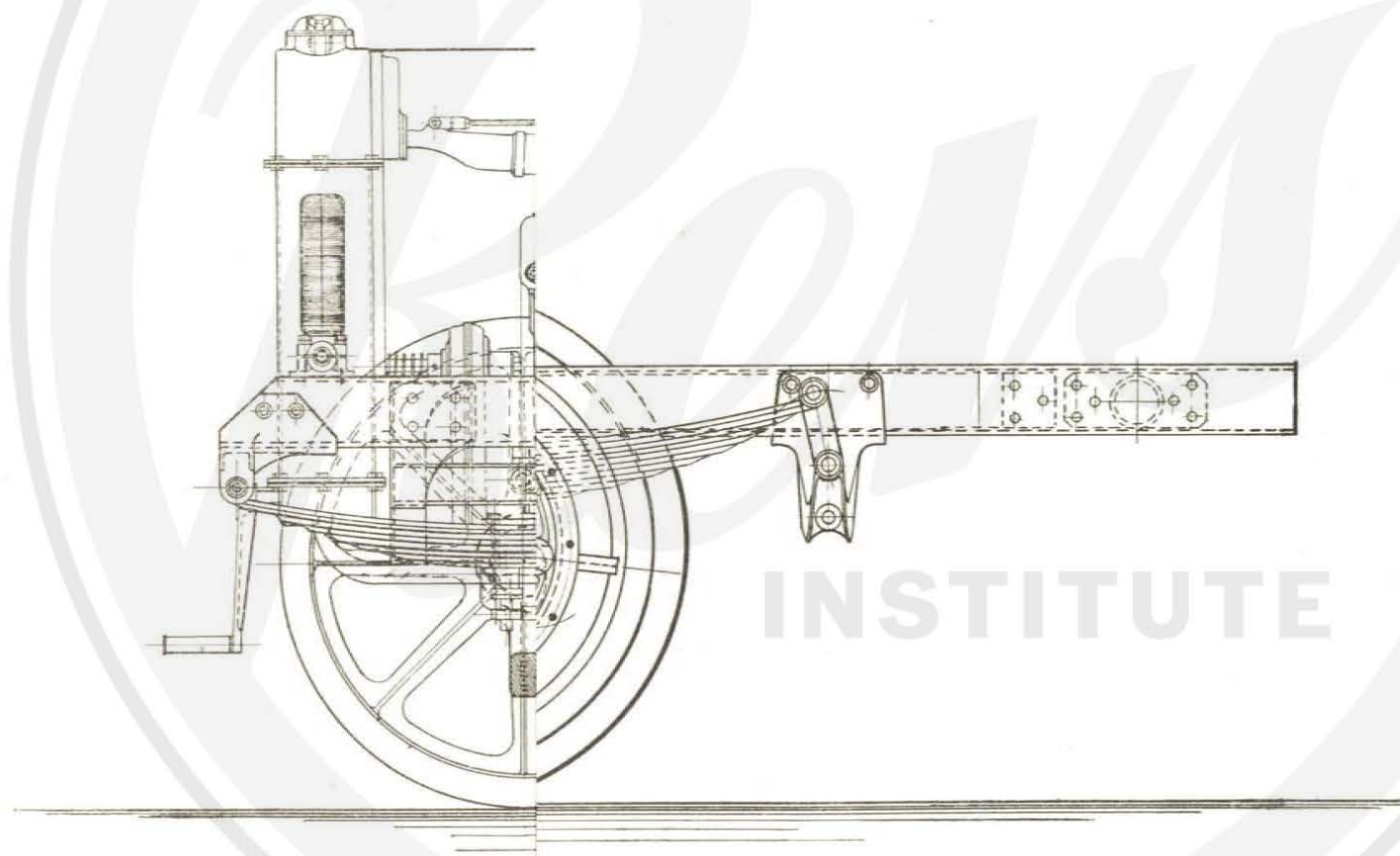
No. 303	30/40 h.p., to carry 3 tons (complete with body, as illustrated)	-	-
No. 305	" " " 5 tons	"	"

CODE WORD	-	ULAVE
CODE WORD	-	ULOR

For full Specification, see page 9.

Wind Screen, Lamps, Horn, etc., extra.

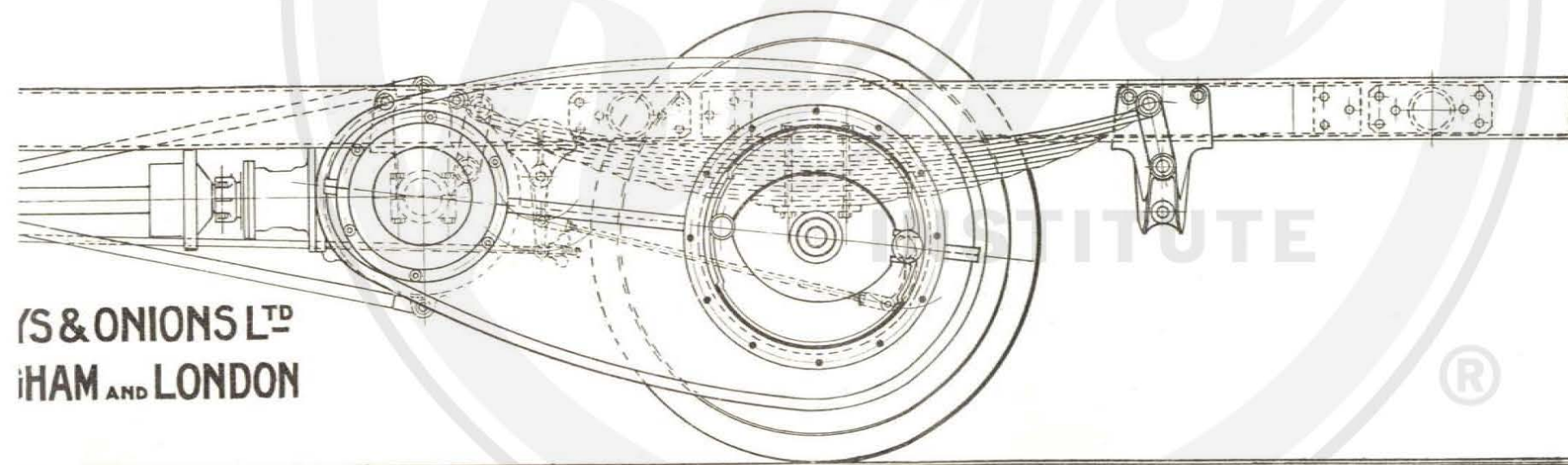




INSTITUTE



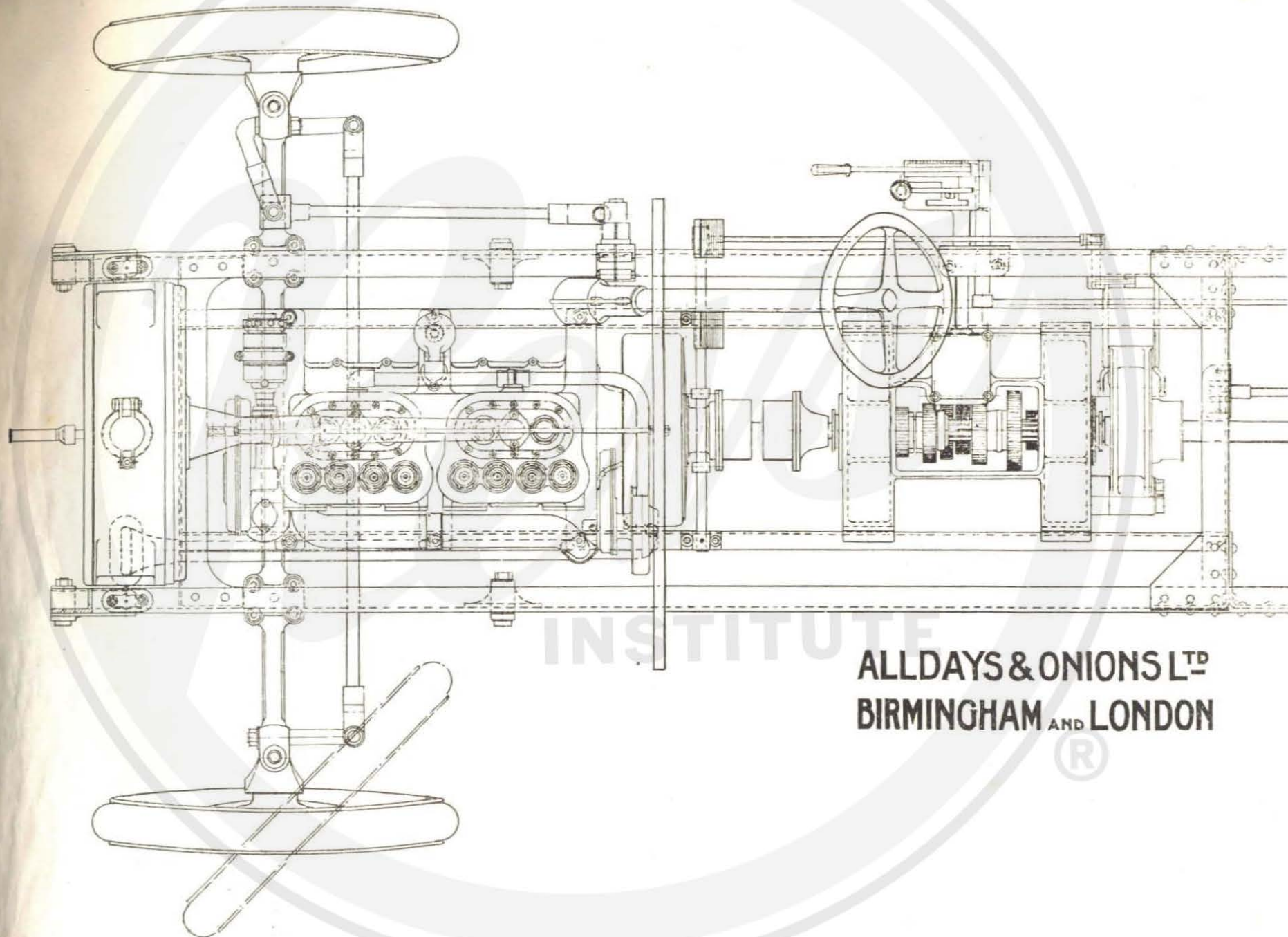
30/40 h.p. 3 and 5 ton CHASSIS.



JS & ONIONS LTD
BIRMINGHAM AND LONDON



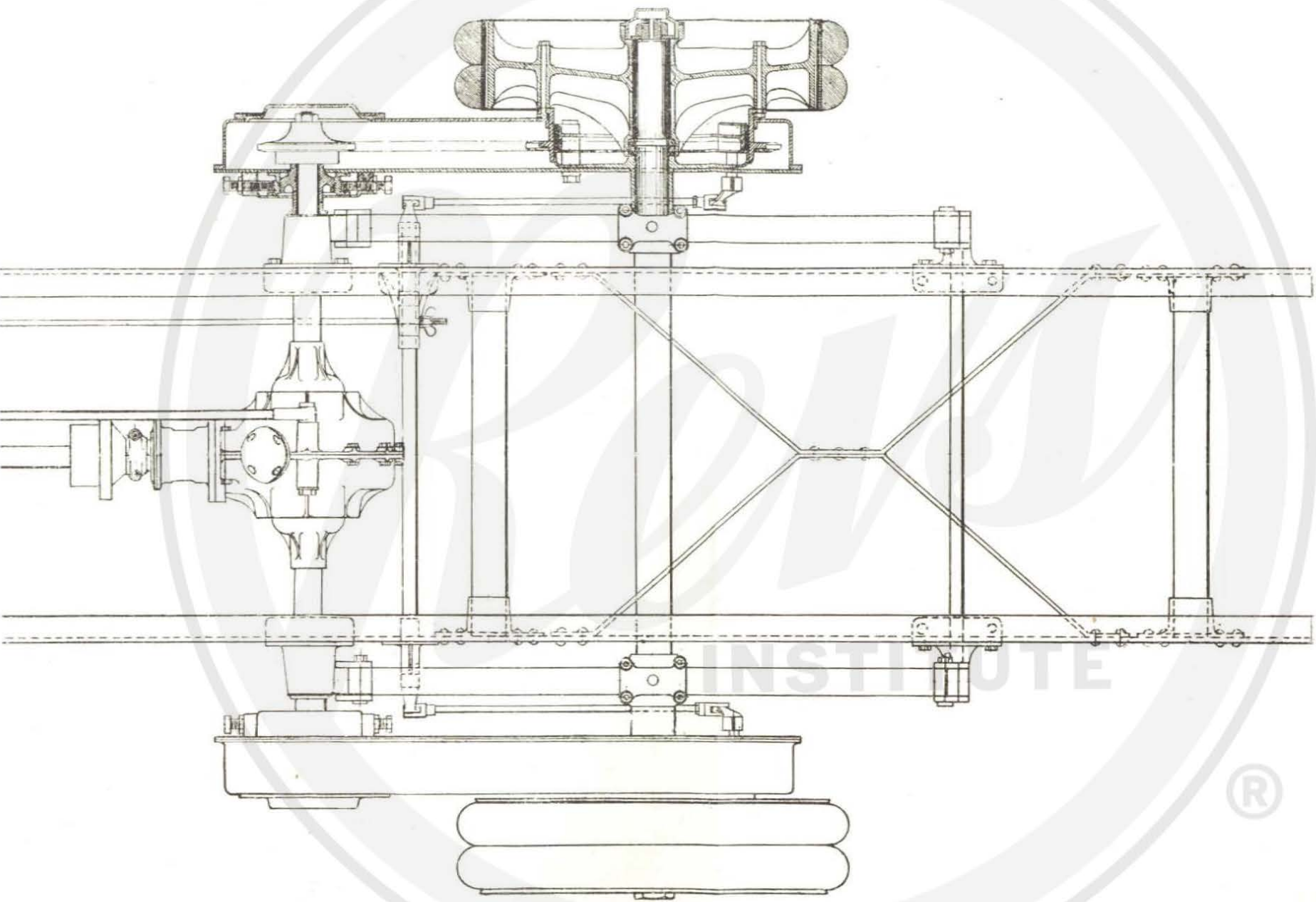
PLAN VIEW of ALLDAYS



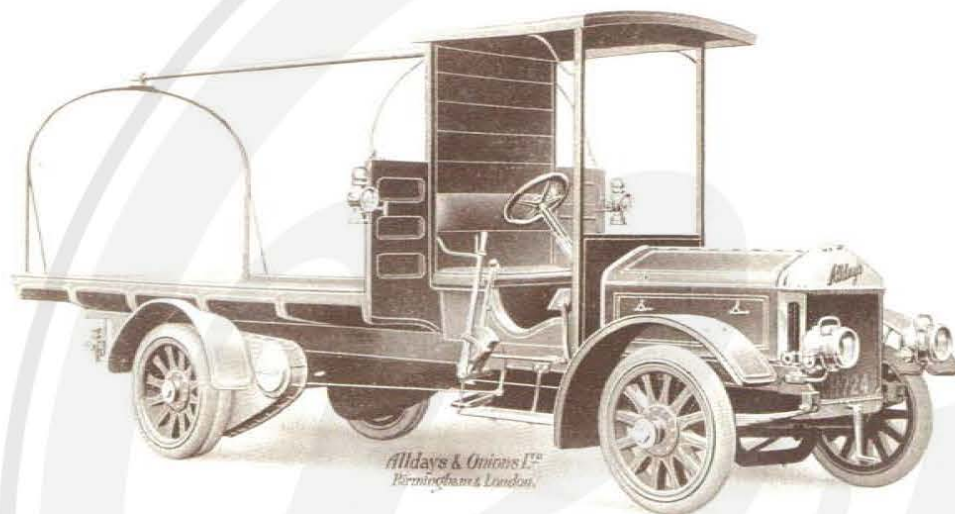
ALLDAYS & ONIONS LTD
BIRMINGHAM AND LONDON



h.p. 3 and 5 ton CHASSIS.



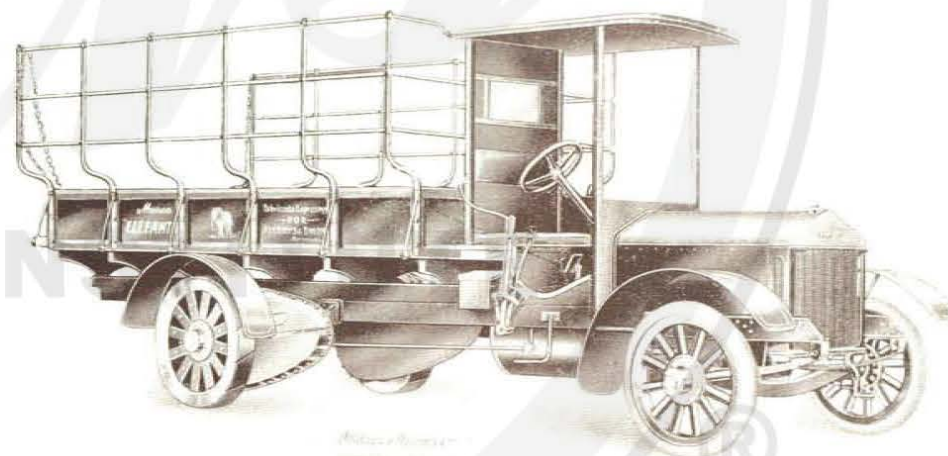
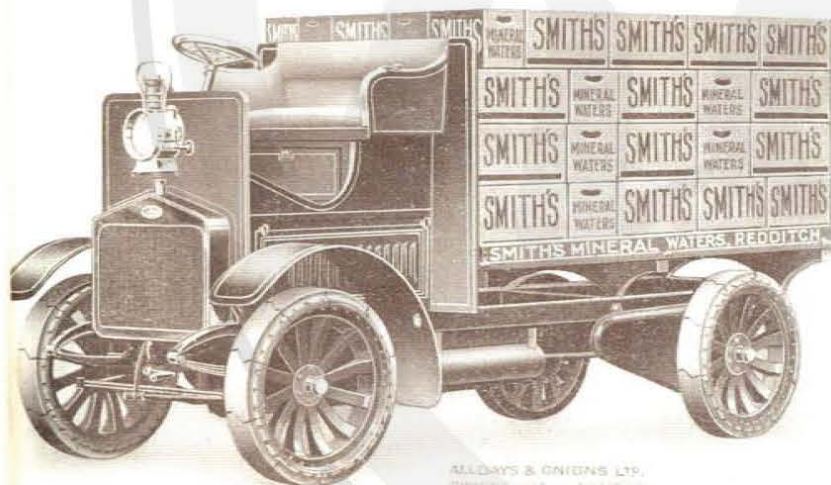
ALLDAYS COMMERCIAL CARS



A few Illustrations of
TYPES OF BODIES
suitable for 3 and 5 ton
30 40 h.p. Chassis.

Any type of body to suit customer's
requirements can be supplied.

Illustrations and Specifications will
be sent on application.

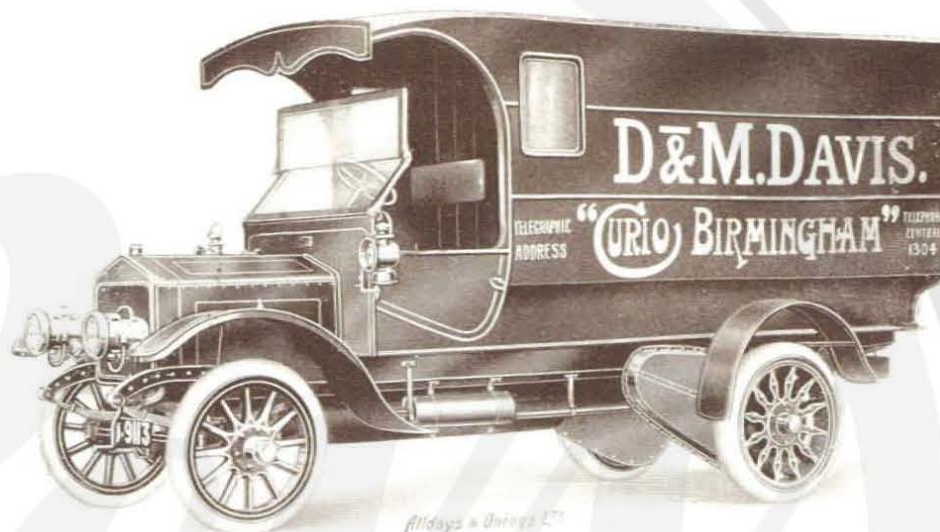


ALLDAYS COMMERCIAL CARS

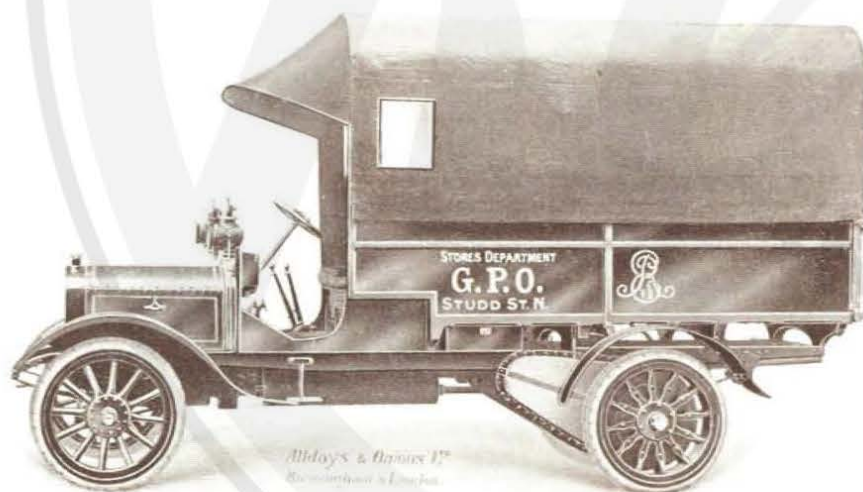
Illustrations of 25/30 h.p. 2 ton and 30 cwt. DELIVERY VANS.

Any type of body to suit customer's
requirements can be supplied.

Illustrations and Estimates will be
sent on application.



*Alldays & Davies Ltd
Birmingham & London*



*Alldays & Davies Ltd
Birmingham & London*



*Alldays & Davies Ltd
Birmingham & London*

ALLDAYS COMMERCIAL CARS

Specification of 25/30 h.p. 40 and 30 cwt. Vans.

FRAME	Pressed steel, channel section.
ENGINE	Alldays vertical 4-cylinder engine, 4in. bore \times 5 $\frac{1}{2}$ in. stroke, with valve stems and tappets enclosed. R.A.C. rating, 24 $\frac{1}{2}$ h.p.
LUBRICATION	Forced lubrication to crankshaft and connecting rod bearings. An accessible oil filler and level gauge is provided.
CARBURETTOR	Latest type W. & P.
IGNITION	By Bosch high tension magneto.
CONTROL	The throttle and ignition are controlled by levers on a quadrant above the steering wheel.
COOLING	By vertical gilled tube radiator, assisted by a fan. Thermo-syphon circulation.
GEAR BOX	One-piece gear box, with large inspection cover. Three speeds forward and one reverse are provided, operated by a lever with a "gate" quadrant. The shafts are mounted on ball bearings.
TRANSMISSION	From gear box to rear wheels through self-contained countershaft and roller chains. The chains run in oil-retaining metal cases, or from gear box direct to rear live axle.
WHEELS	Best quality Artillery type.
SPRINGS	Half-elliptic at front and rear, of best quality spring steel, oil tempered.
TYRES	On the 40 cwt. vehicle, the front wheels are fitted with 30in. \times 3 $\frac{1}{2}$ in. single, and the rear wheels with 33 $\frac{1}{2}$ in. \times 4in. twin solid rubber tyres, of best quality.

TYRES (CONTINUED.) On the 30 cwt. vehicle the front wheels are fitted with 30in. \times 3 $\frac{1}{2}$ in. single, and on the rear wheels with 32in. \times 3 $\frac{1}{2}$ in. twin solid rubber tyres.

SPECIAL NOTE The frame and certain parts of the transmission of the 40 cwt. vehicle are made proportionately stronger to carry the heavier load.

BODY Of best material throughout, with ash framing. The roof is of best pine or white-wood in narrow strips, tongued and grooved and covered with best roofing canvas bedded in white lead. Any type of body can be fitted to suit customer's requirements.

PAINTING The body is properly prepared, filled, rubbed down, painted in approved colour, and finished in best manner with two coats of best hard carriage varnish.

LETTERING To order, extra.

40 CWT. VAN.	DIMENSIONS.	30 CWT. VAN.
Length behind driver's seat inside, 10ft.; Width inside, to order; Height inside, to order; Length overall, 17ft. 9in.; Width overall, 6ft. 6in.; Wheelbase, 11ft. 3in.; Wheeltrack, 5ft. 6in.		Length behind driver's seat inside, 8ft.; Width inside, to order; Height inside, to order; Length overall, 15ft. 8in.; Width overall, 6ft. 0in.; Wheelbase, 10ft. 3in.; Wheeltrack, 4ft. 8in.

SHIPPING DIMENSIONS (APPROX.) OF CHASSIS.	
40 CWT. VAN.—Length, 18ft. 3in.; Width, 6ft. 9in.; Height, 4ft. 3in.	30 CWT. VAN.—Length, 16ft. 3in.; Width, 6ft. 1in.; Height, 4ft. 3in.

40 CWT. VAN.	WEIGHTS (APPROX.)	30 CWT. VAN.
Nett, 1ton 9cwt.; Gross, 2ton 10cwt.		Nett, 1ton 7cwt.; Gross, 2ton 8cwt.

40 cwt. Chassis only, complete with Solid Rubber Tyres

30 cwt. " " " " " "

No. 254—40 cwt. Delivery Van, complete with Box Body and Solid Tyres

No. 255— " Lorry, complete with Flat Lorry Body and Solid Tyres

No. 253—30 cwt. Delivery Van, complete with Box Body and Solid Tyres

No. 256— " Lorry, complete with Flat Lorry Body and Solid Tyres

Tarpaulin Cover, with necessary Ironwork and Supports, for Lorry Body

CODE WORD — UWATE.
 ULOAD.

" UDEL.
" UROL.
" UCAR.
" UMOW.
" UTAR.



ALLDAYS COMMERCIAL CARS

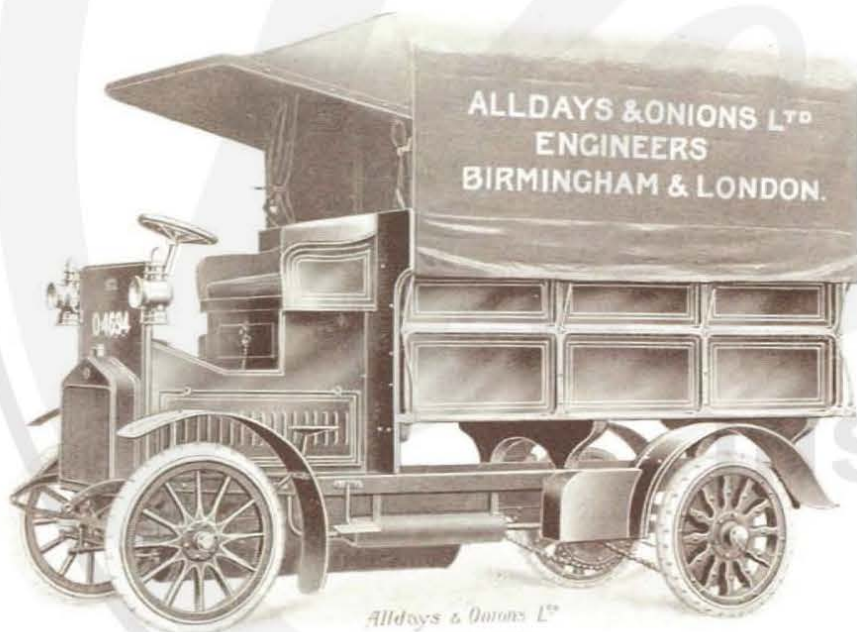
Illustrations of 16/20 h.p. 20 cwt. DELIVERY VANS.

Any type of body to suit customer's requirements can be supplied.

Illustrations and estimates will be sent on application.



*Alldays & Onions Ltd.
Birmingham & London*



*Alldays & Onions Ltd.
Birmingham & London*



*ALLDAYS & ONIONS LTD
BIRMINGHAM & LONDON*

ALLDAYS COMMERCIAL CARS

Specification of 16/20 h.p. 20 cwt. Delivery Van.

FRAME . . .	Pressed steel, channel section.	SPRINGS . . .	Half-elliptic at front and rear, of best quality spring steel, oil tempered.								
ENGINE . . .	Alldays vertical 4-cylinder engine 3 $\frac{3}{4}$ in. bore \times 5 $\frac{1}{2}$ in. stroke, with valve stems and tappets enclosed. R.A.C. rating, 18.2.	TYRES . . .	Front wheels fitted with 30in. \times 3in. single solid rubber tyres and rear wheels with 32in. \times 3in. twin solid rubber tyres, band pattern, best quality.								
LUBRICATION	Forced lubrication to crankshaft and connecting rod bearings. An accessible oil filler and level gauge is provided.	BODY . . .	Of best material throughout, with ash framing. The roof is of best pine or white-wood in narrow strips, tongued and grooved and covered with best roofing canvas bedded in white lead. Any type of body to suit customer's requirements can be fitted.								
CARBURETTOR	Latest type, W. & P.	PAINTING . . .	The body is properly prepared, filled, rubbed down, painted in approved colour, and finished in best manner with two coats of best hard carriage varnish.								
IGNITION . . .	By Bosch high tension magneto.	LETTERING . . .	To order, extra.								
CONTROL . . .	The throttle and ignition are controlled by levers on a quadrant above the steering wheel.	DIMENSIONS (APPROX.)	Length behind driver's seat, inside, 7ft. Width inside, 4ft. 6in.; Height inside, 5ft. 3in.; Length overall, 14ft. 9in.; Width overall, 5ft. 10in.; Wheelbase, 10ft.; Wheel track, 4ft. 3in.								
COOLING . . .	By vertical gilled tube radiator, assisted by a fan. Thermo-syphon circulation.	SHIPPING DIMENSIONS (APPROX.) OF CHASSIS—	Length, 15ft. 4in.; Width, 5ft. 10in.; Height, 4ft. 2in.								
GEAR BOX . . .	One-piece gear box, with large inspection cover. Four speeds forward and one reverse are provided, operated by a lever with "gate" quadrant. The shafts are mounted on ball bearings.	WEIGHTS (APPROX.)—	<table> <tr> <td>Nett.</td> <td>T. G. Q.</td> <td>Gross.</td> <td>T. C. Q.</td> </tr> <tr> <td>1</td> <td>2 0</td> <td>2</td> <td>1 0</td> </tr> </table>	Nett.	T. G. Q.	Gross.	T. C. Q.	1	2 0	2	1 0
Nett.	T. G. Q.	Gross.	T. C. Q.								
1	2 0	2	1 0								
TRANSMISSION	From gear box to rear wheels, through self-contained countershaft and roller chains. The chains run in oil-retaining metal cases. Or from gear box direct to rear live axle.	CODE WORD . . .	USEX.								
WHEELS . . .	Best artillery wheels with oak spokes and ash felloes.	CODE WORD . . .	USOL								
		CODE WORD . . .	ULAT								

Chassis only, complete with Solid Rubber Tyres -

No. 206—Delivery Van complete with Box Body and Solid Tyres	...
No. 207 Lorry complete with Flat Lorry Body do. do.	...



ALLDAYS COMMERCIAL CARS



Illustrations of 12/14 h.p.
15 cwt. DELIVERY VANS.



Any type of body to suit
customer's requirements
can be supplied.



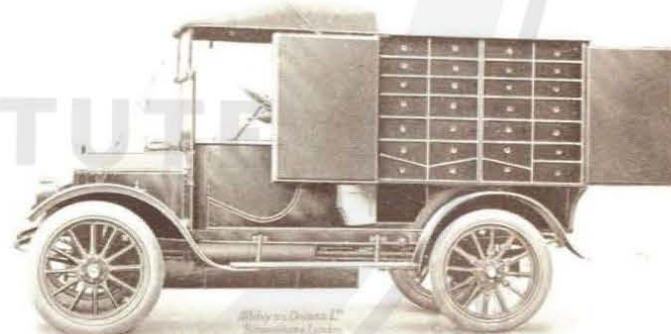
ALLDAYS & ONIONS LTD
BIRMINGHAM & LONDON

Illustrations and Estimates
will be sent on application.



ALLDAYS & ONIONS LTD
BIRMINGHAM & LONDON

A MOST USEFUL CAR
for carrying Travellers'
Samples and the like.
As will be seen from the
right-hand illustration,
the interior can be fitted
up with Drawers or
Shelves to suit any class
of goods.



ALLDAYS & ONIONS LTD
BIRMINGHAM & LONDON

ALLDAYS COMMERCIAL CARS

Specification of 12/14 h.p. 15 cwt. Delivery Van.

FRAME . . .	Pressed steel, channel section.	SPRINGS . . .	Half-elliptic at front and rear, of best quality spring steel, oil tempered.
ENGINE . . .	Alldays vertical 4-cylinder engine, 3in. bore x 4 $\frac{1}{2}$ in. stroke, with valve stems and tappets enclosed. R.A.C. rating, 14.4.	TYRES . . .	Pneumatic, 820 x 120, heavy Limousine, Dunlop or equal. Plain to front wheels, and steel studded to rear wheels.
LUBRICATION	Forced lubrication to crankshaft and connecting rod bearings. An accessible oil filler and level gauge is provided.	BODY . . .	Of best material throughout, with ash framing. The roof is of best pine or white-wood in narrow strips, tongued and grooved, and covered with best roofing canvas, bedded in white lead. Any type of body can be fitted to suit customer's requirements.
CARBURETTOR	Latest type W. & P.	PAINTING . . .	The body is properly prepared, filled, rubbed down, painted in approved colour, and finished in best manner with two coats of best hard carriage varnish.
IGNITION . . .	By Bosch high tension magneto.	LETTERING . . .	To order, extra.
CONTROL . . .	The throttle and ignition are controlled by levers on a quadrant above the steering wheel.	DIMENSIONS (APPROX.)—	Length behind driver's seat inside, 6ft. Width inside, 4ft. 6in.; Height inside, 5ft. 3in.; Length overall, 13ft. 9in.; Width overall, 5ft. 10in.; Wheelbase, 9ft. 6in.; Wheeltrack, 4ft. 6in.
COOLING . . .	By vertical gilled tube radiator, assisted by a fan. Thermo-syphon circulation.	SHIPPING DIMENSIONS (APPROX.) OF CHASSIS . . .	Length, 14ft. 4in.; Width, 5ft. 10in.; Height, 4ft.
GEAR BOX . . .	One-piece gear box, with large inspection cover. Four speeds forward and one reverse are provided, operated by a lever with "gate" quadrant. The shafts are mounted on ball bearings.	WEIGHTS (APPROX.)—	Nett, 19cwt.; Gross, 1 15 0.
TRANSMISSION	From gear box, by universally jointed shaft to the rear live axle. The load is carried on the outer sleeves and not by the shafts.		
WHEELS . . .	Best artillery wheels with oak spokes and ash felloes.		

Chassis only, complete with Pneumatic Tyres . . .

CODE WORD . . . USUF.

No. 15 . . . Van, complete with Box Body and Tyres . . .

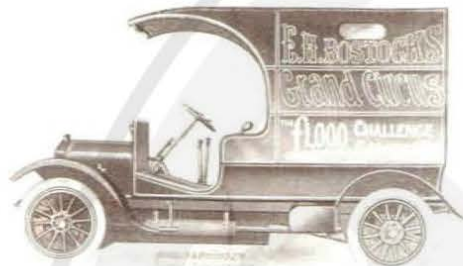
CODE WORD . . . UTRAV.

Delivery Van, complete with Flat Lorry Body and Tyres . . .

CODE WORD . . . UTIL.



ALLDAYS COMMERCIAL CARS



Illustrations of 10/12 h.p.
10 cwt. DELIVERY VANS.

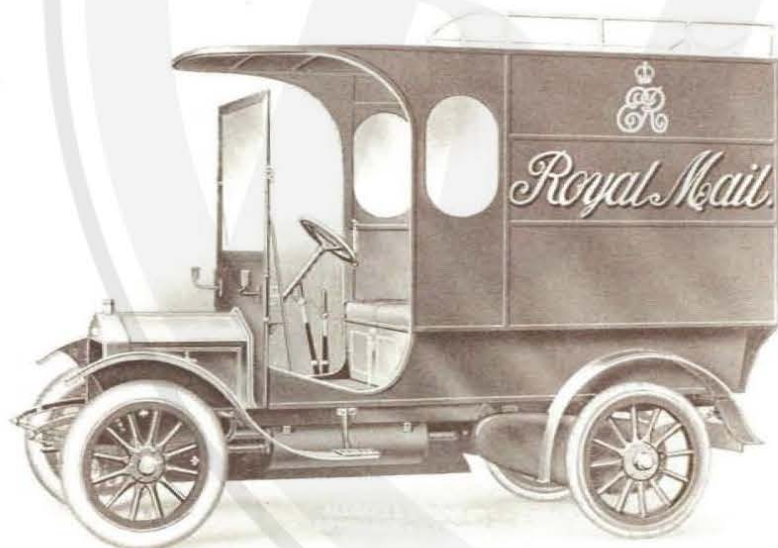


Any type of body to suit customer's
requirements can be supplied.



Newspaper Delivery Van.

Illustrations and Estimates
will be sent on application.



ALLDAYS & ONIONS LTD
BIRMINGHAM & LONDON.

ALLDAYS COMMERCIAL CARS

Specification of 10/12 h.p. 10 cwt. Delivery Van.

FRAME . . .	Pressed steel, channel section.	SPRINGS . . .	Half-elliptic. Best spring steel, oil tempered.
ENGINE . . .	Alldays 2-cylinder vertical balanced type, 3 $\frac{1}{2}$ in. bore \times 4 $\frac{1}{2}$ in. stroke. R.A.C. rating, 11.2.	TYRES . . .	Pneumatic, 760 \times 100, heavy type. Plain to front wheels and grooved to rear wheels.
LUBRICATION.	Forced lubrication to crankshaft and connecting rod bearings. An oil level gauge and accessible filler are fitted.	BODY . . .	Of best material throughout, with selected ash framing. The roof is of best pine or whitewood in narrow strips, tongued and grooved, and covered with best roofing canvas, bedded in white lead. Any type of body can be fitted to suit customer's requirements.
CARBURETTOR	Latest type T. & M.	PAINTING . . .	The body is properly prepared, filled up, painted in approved colour, and finished in best manner with two coats best hard carriage varnish.
IGNITION . . .	By Bosch high tension magneto.	LETTERING . . .	To order, extra.
CONTROL . . .	Throttle and ignition controlled by levers on a quadrant above steering wheel.	DIMENSIONS . . .	Length behind driver's seat, inside, 4ft. 6in. Width inside, 4ft. 3in.; Height inside, 5ft.; Length overall, 12ft. 6in.; Width overall, 5ft. 6in.; Wheelbase, 9ft.; Wheel-track, 4ft. 3in.
COOLING . . .	By large vertical gilled tube radiator, assisted by a fan. Thermo-syphon circulation.	SHIPPING DIMENSIONS (APPROX.) OF CHASSIS—	Length, 13ft.; Width, 5ft. 6in.; Height, 3ft. 10in.
GEAR BOX . . .	One-piece gear box, with large inspection cover. Four speeds forward and one reverse are provided, operated by lever with "gate" quadrant. The shafts are mounted on ball bearings.	WEIGHTS (APPROX.)—	Net, 15 cwt.; Gross, 1 10 0
TRANSMISSION	From gear box by universally-jointed shaft to the rear live axle. The load is carried on the outer sleeves, and not by the shafts.		
WHEELS . . .	Artillery type, with best oak spokes, and ash felloes.		

Chassis only, complete with Pneumatic Tyres -

CODE WORD - UCOD.

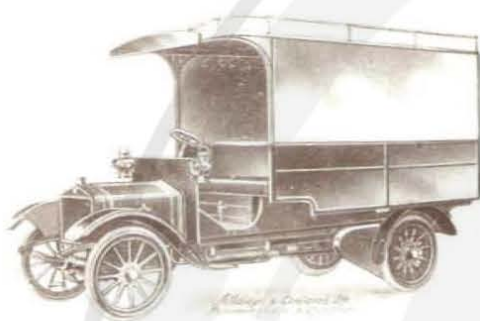
No. 110—Delivery Van complete with Box Body and Tyres ...

CODE WORD - UMOT.



ALLDAYS COMMERCIAL CARS

A FEW ILLUSTRATIONS OF VARIOUS TYPES OF COMMERCIAL CARS RECENTLY DELIVERED.



Laundry Van.



Traveller's Car.



Laundry Van

With back compartment, for carrying samples or general stores.

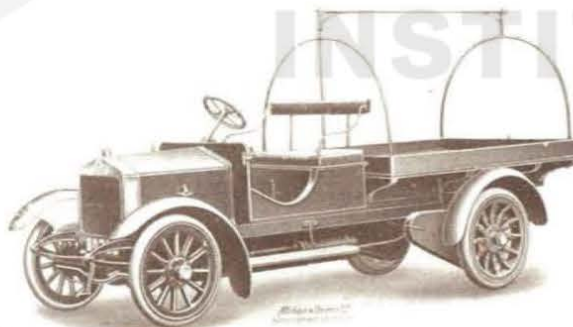


Alldays
Transport Train.

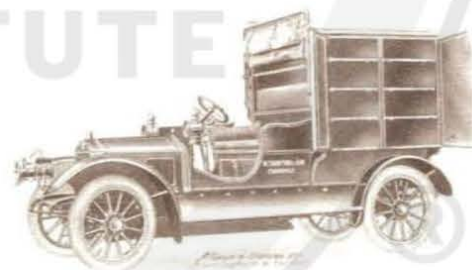
Alldays
Transport Train.



Fire Tender.



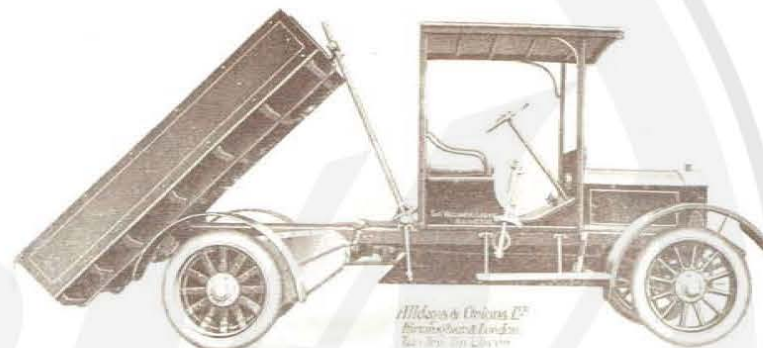
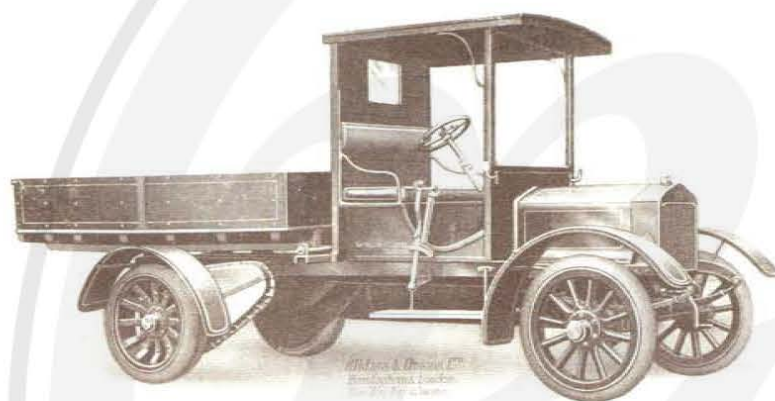
Merchant's Lorry



Traveller's Sample Van.

ALLDAYS COMMERCIAL CARS

Alldays Tip Wagons.



BUILT FOR SIR WILLIAM H. LEVER'S PRIVATE USE.

The above are made to carry from two to five tons, and fitted with 25/30 and 30/40 h.p. Engines, as specifications on pages 9 and 13.

Fitted with Solid Band Type Rubber Tyres, single to front wheels, twin to rear, complete with tipping gear. Steel Bodies can be fitted if required.

ESTIMATES ON APPLICATION.

No. 291	Two Ton Tip Wagon, complete as illustrated	---	---
No. 293	Three Ton " " "	---	---
No. 295	Five Ton " " "	---	---

CODE WORD - UTIP.
CODE WORD - UWAG.
CODE WORD - USON.



ALLDAYS COMMERCIAL CARS

Alldays "Midget" or Light Delivery Van.

PROMPT DELIVERY

Is one of the secrets of smart, successful tradesmen, and in this Light Delivery Van we offer a serviceable and reliable means of promptly conveying to the customers their purchases, at a minimum cost, together with a means of a free advertisement to the owner.

Three or four "Midgets" can be purchased for the price of one large Motor Delivery Van, thus preventing delay and long waste return journeys from one extreme district to another.

Any design of body can be fitted to suit client's own requirements at a small extra.



A Commercial Van designed to carry 6 cwt. A boon to all tradesmen.

PRICE.

Complete with 2 side lamps, 1 tail lamp, horn, and complete kit of tools.

£130 0 0

Net Cash at Works.

CODE WORD - - - VAMIDO.

Detachable wheels, with spare or 5th wheel and 5th tyre complete.

£7 0 0 extra net.

Jack, **10 6** extra net.

For Guarantee, see page 27.

Specification.

ENGINE—Alldays water-cooled engine, mechanically operated and interchangeable inlet and exhaust valves with valve tappets protected by an easily detachable cover. Automatic lubrication by pump, driven from the camshaft.

CARBURETTOR—Float feed spray type, giving an effective mixture at all engine speeds.

IGNITION—By high-tension magnets.

COOLING—By vertical gilled tube radiator of ample capacity. Thermo-siphon circulation.

TRANSMISSION—Through leather-to-metal cone clutch to gearbox, and by cardan shaft to worm-driven rear axle.

GEAR BOX—This is in one piece only, with large inspection cover. The gears are of special steel, accurately cut and hardened. Three speeds forward and reverse are provided, the top gear being direct. The gears are operated by a side lever with "progressive" change. The gear shafts run on ball bearings.

FRAME—This is of best quality channel section steel.

AXLES—The front axle is a steel forging, I section. The front hubs are mounted on ball bearings. The rear axle is worm-driven, with hardened worm and special phosphor-bronze worm wheel. Ball-bearings with double ball thrust washers are fitted to worm shaft and differential.

WHEELS—Wire wheels for 650 x 65 tyres are fitted to front and rear axles.

TYRES—Best Dunlop heavy type tyres, 650 x 65 m.m.

SPRINGS—The springs are made of best quality spring steel, oil-tempered, and owing to special type and method of fixing, render the car remarkably free from running vibration.

BRAKES—Two sets, viz., external hand brakes operated by hand lever, and foot brake, which operates internal expanding brakes, both of which are fitted to rear hubs. The internal expanding brakes are compensated.

BODY WORK—Is of best material and workmanship throughout, painted and finished in best coach style.—Standard colour, dark carriage green or red. All mounts brass finish.

LAMPS AND HORN—Two side and tail lamps and horn included.

TOOLS—Complete set of tools in wallet.

PETROL CONSUMPTION—35 miles to the gallon. Carries a load of 6 cwt., including driver and passenger. Size of box, 4ft.5in. long, 4ft. high, 3ft.6in. wide (inside measurements). Height from ground to top of hand, 4ft. Wheel base, 7ft. Gear ratios: Third, 5.3 to 1; second, 9.2 to 1; first, 5.3 to 1.

ALLDAYS COMMERCIAL CARS

Alldays (Patent) "Expressodel" No. 1 Autocarrier. 7/8 H.P. WATER COOLED.



The above illustration is of a type of body that can be fitted to "Expressodel" No. 1 Autocarrier, to suit customers' own requirements.

ECONOMY. SPEED. RELIABILITY. DURABILITY. DISTANCE NO OBJECT.

Three or four "Expressodels" can be purchased for the price of one large Motor Delivery Van, thus preventing delay and long waste return journeys from one extreme district to another.

Deliveries from 100 to 150 miles per day can be regularly accomplished with ease and comfort.

Price, complete as Specification, £100, Net Cash at Works.

Code Word - "EXODEL."

Various types of Bodies are made and can be fitted to suit any special trade at a nominal extra cost, and finished off in colours to suit requirements. At time of ordering it is best to specify trade wanted for, and about the load it is required to carry, so that springs and gearing can be arranged to suit.

EXTRAS.

If fitted with Plated Top Rail, 35/- extra net; with Chain Case, as illustrated, 60/- extra net; with one pair of Side and Tail Lamps, 50/- extra net; with Horn, 12/6 extra net; with two Number Plates, 7/6 extra net; Name, Address and Trade written in best style, price on application. If special make of Tyres or larger sizes are desired, they can be supplied at cost, extra. For Guarantee, see page 23.

Established
1650

ALLDAYS COMMERCIAL CARS

Illustrations of CHAR-A-BANCS
to carry from 12 to 30 passengers.

16/20 h.p. Char-a-banc, to carry 16 passengers	-
25/30 h.p. " " 24 "	-
25/30 h.p. " " 30 "	-

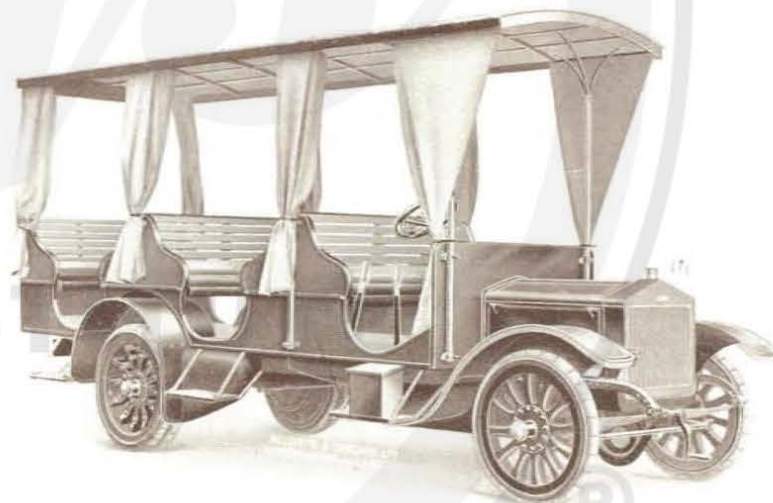
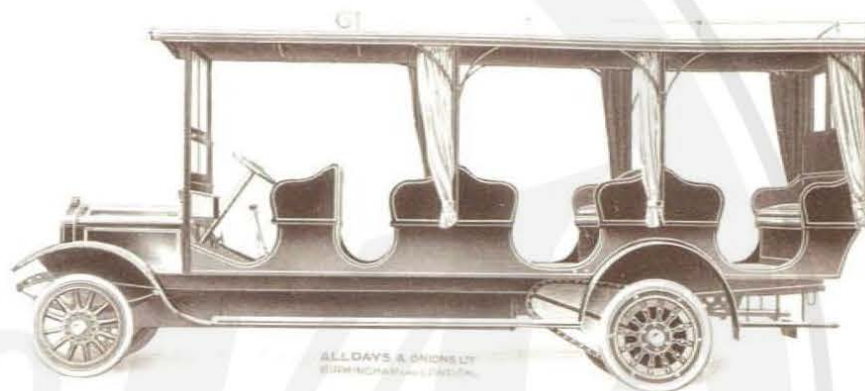
Complete with solid band type tyres, detachable canopy with luggage rail, side curtains, hinged wind screen, side and tail lamps, horn, kit of tools, and special heavy jack.

Body painted any colour to suit requirements.
Seats upholstered in first-class style.

Lath Seats can be fitted if required.

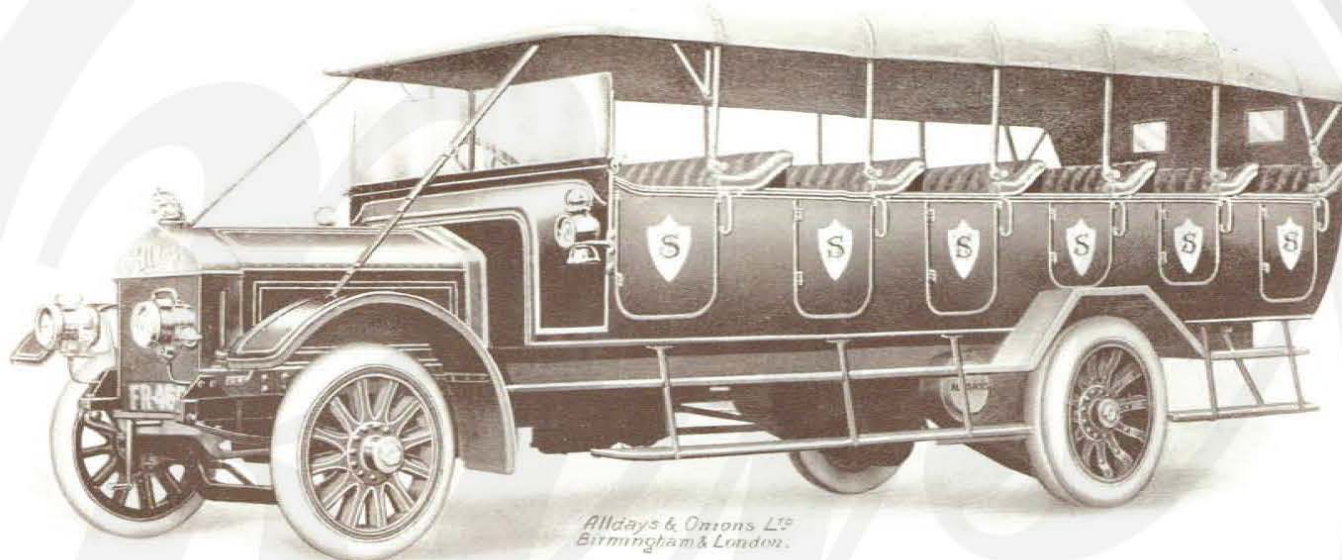
Estimates and Illustrations of any type of Body will be sent on application.

MOST SUITABLE FOR TROPICAL CLIMATES.



ALLDAYS COMMERCIAL CARS

Alldays Char-a-banc.



*Alldays & Onions Ltd
Birmingham & London.*

Alldays 30 40 h.p. Char-a-banc.

Char-a-bancs, fitted with bodies as illustrated, can be supplied to carry any number of passengers, to suit customers' requirements.

No. 257—25 30 h.p., to carry 24 passengers (complete as illustrated)	...	CODE WORD	-	URAB.
No. 258—25 30 h.p., " 28 " " "	...	CODE WORD	-	UBANC.
No. 294—30 40 h.p., " 30 " " "	...	CODE WORD	-	UFORT.

Chassis as Specifications on pages 9 and 13.



ALLDAYS COMMERCIAL CARS

Alldays Char-a-banc.



Alldays 25 30 h.p. Char-a-banc.

Char-a-bancs to carry any number of passengers can be built to suit customers' requirements.

No. 208—16 20 h.p., to carry 12 passengers (complete as illustrated)	...	CODE WORD - UPASS.
No. 209—16 20 h.p., " 16 " " " " " " " " " " " "	...	CODE WORD - UCHAR.

Chassis as Specification on page 15.



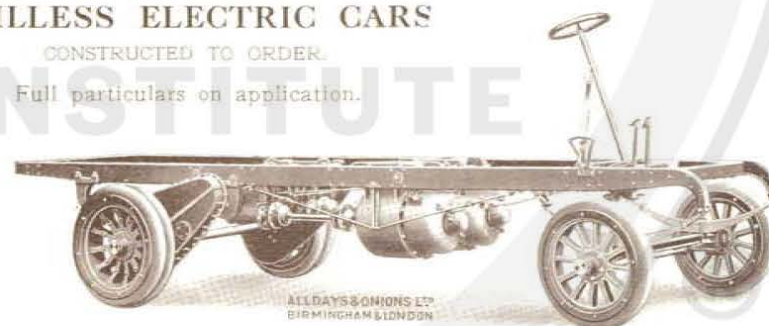
ALLDAYS COMMERCIAL CARS



PATENT RAILLESS ELECTRIC CARS

CONSTRUCTED TO ORDER.

Full particulars on application.



ALLDAYS COMMERCIAL CARS

TERMS OF BUSINESS.

All prices in this Catalogue are strictly net cash. Orders are dealt with in rotation.

DEPOSIT.—One-third deposit with order, balance on completion at works.

DELIVERY is at Works, Birmingham. Charge for expert driver: 12/6 per day of 9 hours, exclusive of board, lodgings and travelling expenses. Customers' Cars are only driven by our staff or stored at customers' own risk and responsibility.

TRIAL RUNS given by appointment to bona-fide intending purchasers, at Works, Birmingham, or from our London Showrooms: 58, Holborn Viaduct, E.C., or Liverpool Depot.

Customers' cars are only stored or driven by our staff at customers' own risk and responsibility.

All goods sent by rail are consigned at owner's risk (unless otherwise ordered); they are delivered in good condition at our works and are signed for as such by the railway companies. Our responsibility thus ceases, as goods then become the property of the purchaser, who should sign for them as "not examined," and make a claim against the carriers for any damage sustained.

REPAIRS.—In all cases Repairs must be sent CARRIAGE PAID, with sender's name attached, or they will be refused, and advice must be sent by post of their despatch. If new parts are required, state number of Engine and Chassis.

The illustrations are given merely as a general guide to purchasers, and are not binding as to details.

ALTERATION OF PRICES.—The Company reserve the right to alter any illustration, detail, or prices in this Catalogue at any time without notice, and in the event of the tyre manufacturers making any increase in the price of tyres, owing to rises in the rubber market, to add the extra cost to invoice price of all Cars delivered after the date of such advance.

STANDARD COLOURS.—To facilitate deliveries we have adopted standard colours and finish. Alldays Red (deep rich cherry colour) and Alldays Green (rich carriage green), with brass mounts; any other colours can be painted to customers' own specification at 3 guineas extra net, and nickel-plated mounts instead of brass, 3 guineas extra net.

AGENTS.—The term Agent is used in a complimentary sense only, and those firms we style our agents are not authorised to advertise, incur any debts, or transact any business whatsoever on our account, other than the sale of goods which they may purchase from us; nor are they authorised to give any warranty, or make any representation on our behalf other than those contained in the Guarantee on page 28.



ALLDAYS COMMERCIAL CARS

GUARANTEE.



IN the manufacture of our Commercial Cars we use all reasonable care and skill to ensure the selection and use of the best materials and the best workmanship. Accordingly, in lieu of the warranty or guarantee as to the fitness for the purposes for which they are sold, implied by Common Law, Statute, or otherwise, which warranty or guarantee is, in all cases, excluded, we give, to those purchasing from us, the following guarantee with all new Alldays Commercial Cars purchased from us:—

If any part of a new Alldays Commercial Car supplied by us, direct, or through one of our recognised agents, should, under normal conditions, be found to be defective within six calendar months from the despatch thereof, through faulty materials or workmanship, we guarantee and agree, provided notice of the defect be communicated to us in writing at our works forthwith on its discovery, with the number of the engine and chassis and the date of sale by us, and the defective part, unaltered and unrepaired by others than ourselves, and such other parts as we may require, be first delivered to us carriage paid, at our works, with all reasonable despatch, to repair the defect free of charge, or we will similarly supply a replica of the part. The old parts to remain our property. If parts are ordered or telegraphed for, without mentioning that they are required as free replacements under guarantee, they must be paid for in all cases, and claims made **after** the new parts have been supplied will **not** be entertained.

Our Guarantee does not refer to tyres, lamps, electric fittings, or other articles not of our manufacture.

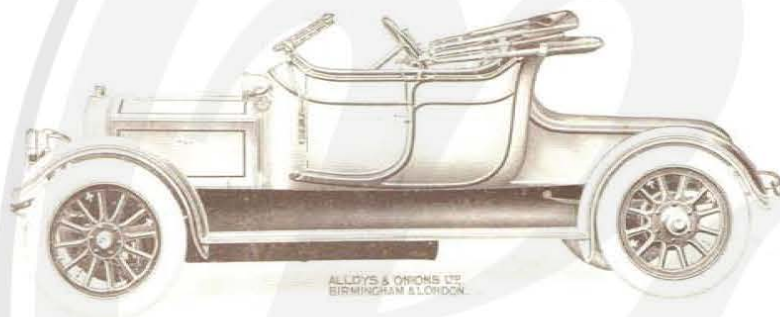


ALLDAYS COMMERCIAL CARS

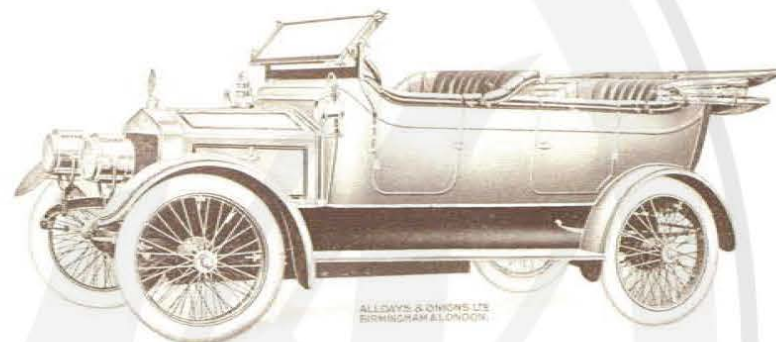
WE ARE THE MAKERS OF
ALL KINDS
OF PLEASURE CARS AND
RAILWAY INSPECTION CARS.

Four Types of ALLDAYS STANDARD CARS.

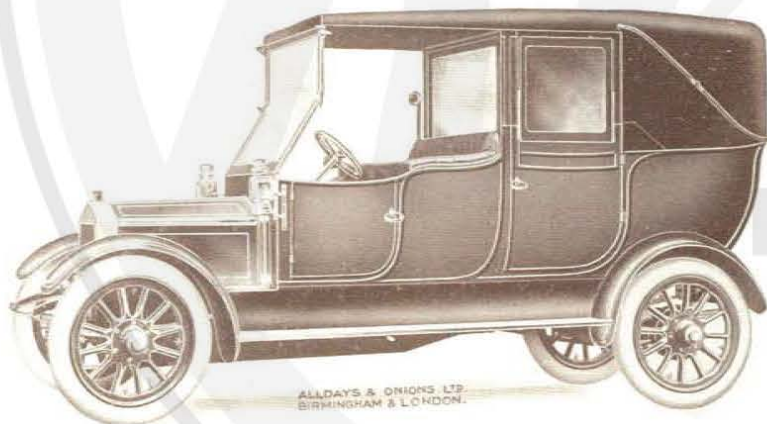
ILLUSTRATED ART CATALOGUE
giving Specification and Prices will
be sent on application.



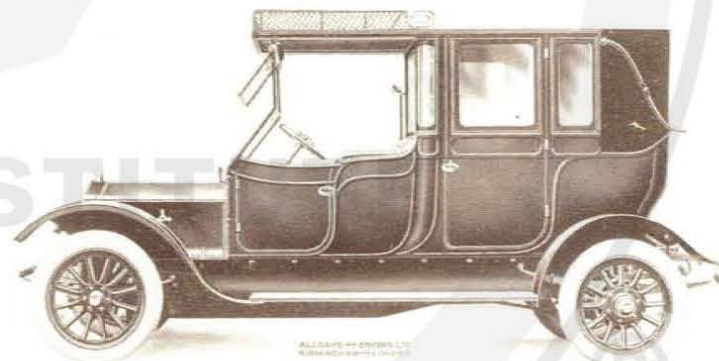
ALLDAYS & ORMONS LTD.
BIRMINGHAM & LONDON.



ALLDAYS & ORMONS LTD.
BIRMINGHAM & LONDON.



ALLDAYS & ORMONS LTD.
BIRMINGHAM & LONDON.



ALLDAYS & ORMONS LTD.
BIRMINGHAM & LONDON.

Established
1870