



13·9 CALCOTT Saloon - - - £575.

Finished Calcott Blue, Upholstered in Bedford Cord.



13·9 CALCOTT Four-Seater Coupé £575.

Finished Royal Blue, Upholstered in Blue Leather.

SPECIFICATIONS AND PRICES OF 1923 MODELS



**CALCOTT BROS. LTD.
COVENTRY.**

Telephone No. 1144-1145.

Telegrams: "CALCOTTS."

Established 1886.

Constructional Features and General Specifications

Engine

Thermo-Syphon water cooled, 4 Cylinder monobloc with an efficient fan. The exhaust pipe is bolted on, and the induction pipe is cast in between the cylinders. The valves are all placed on one side of the engine. They are interchangeable and have adjustable tappets. The Crankshaft is made from a solid forging and is provided with three bearings. The diameter of the journals is 1½ in. on the 10.5 and 11.9, and 1¾ in. on the 13.9 h.p. All the bearings are lined with anti-friction white metal. There is a skew driven oil pump which operates in the sump, supplying all the main bearing troughs.

10.5	65 × 110 m/m c.c. 1456 centimetres.
11.9	69 × 110 m/m c.c. 1645 centimetres.
13.9	75 × 120 m/m c.c. 2120 centimetres.

Carburettor

Zenith. Gravity fed, controlled by lever on steering wheel and foot pedal accelerator.

Ignition

High tension Magneto. Ignition lever being fitted in the top quadrant of the steering wheel. The Magneto drive is now taken through a flexible coupling, the two discs (one of which is slotted) afford a ready means of setting the timing. The Magneto is placed low on the near side leaving the valve cover quite accessible.

Clutch

Self-contained in flywheel, no end pressure being put upon the crankshaft. A flexible disc is fitted within the Clutch, being protected by an aluminium cover. The gearbox end of the Clutch Shaft also is provided with a flexible disc.

Gearbox

Attached to the underframe by three bolts, the feet being cast on the centre part of the box. The change speed lever bracket and gate are self-contained on the gear box, and independent of the main frame, so that by removing the three bolts securing the gearbox to the underframe, the whole can be easily removed.

10.5	Three speeds forward and a reverse, gate change.
11.9	Three speeds forward and a reverse, gate change.
13.9	Four speeds forward and a reverse, gate change.

Transmission

Spiral bevel and cardan shaft.

The propeller shaft runs unenclosed from the back of the gear box, and is provided with a flexible fabric disc both at the front and behind. The pinion and the crown wheel have ball thrust collars. The weight of the car is not carried upon the driving axles, but from a mild steel sleeve projecting from the axle casing: the hubs are mounted on ball and roller bearings.

Brakes

Foot and hand internal, expanding on drums of rear wheels.

Petrol Tank

Fitted in the dash	10.5, capacity 6 galls.
	11.9, capacity 6 galls.
	13.9, capacity 7 galls.

Steering

Worm and Sector.

Springs

Half Elliptic.

Frame

Channel pressed steel, strengthened by underframe.

Wheels

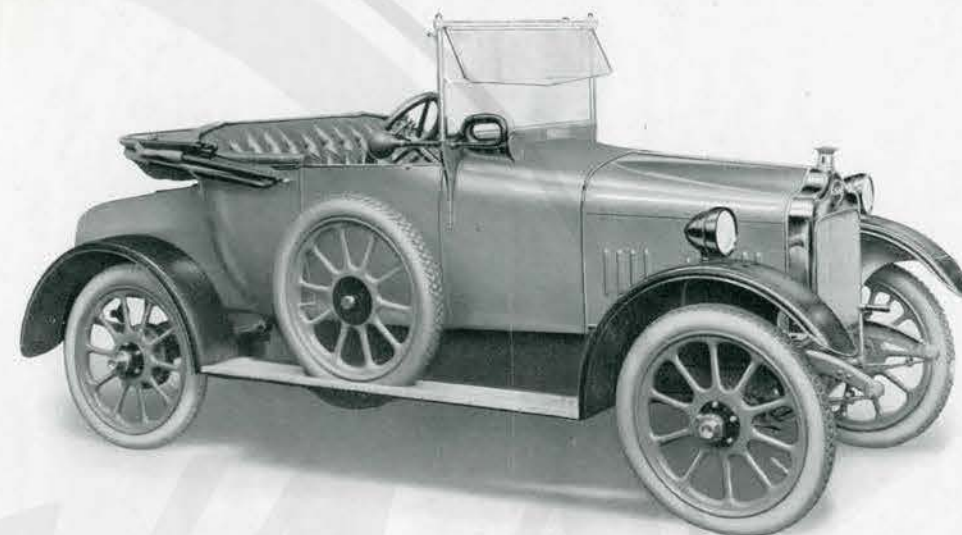
Five, Steel Detachable.

Tyres

Dunlop	10.5 h.p. 700 × 80.
	11.9 h.p. 710 × 90.
	13.9 h.p. 765 × 105.

Equipment

Details of Lighting and Starting Sets and sundry fittings and finish are specified with illustrated matter on following pages



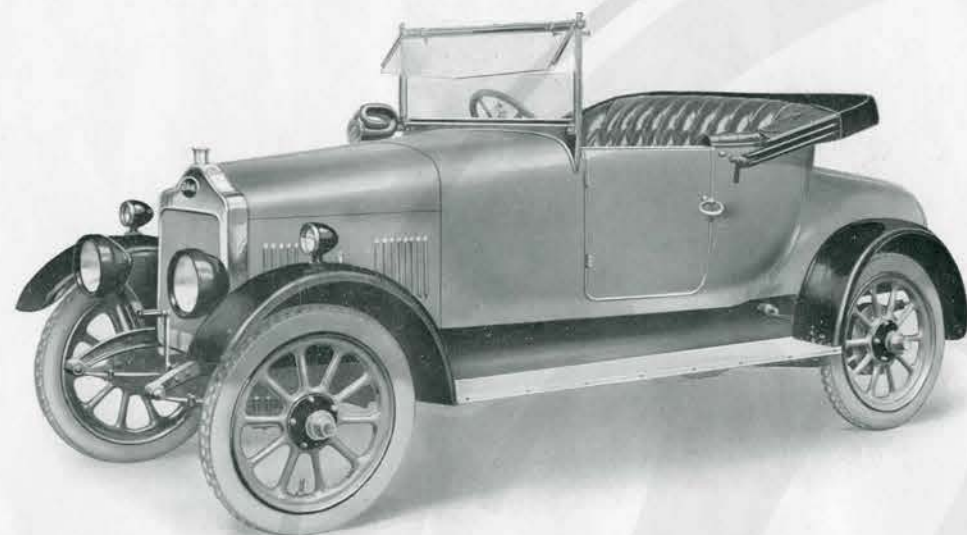
The 10.5 h.p. CALCOTT Two-Seater.



THIS Model, whilst incorporating all the characteristic features of the original 10.5 h.p. Car—a pioneer of Light Cars—embodies many improvements

Two-Seater with Double Dickey seat, finished in Calcott Grey, Black Guards and Valances, Upholstered in Black Leather, Double Windscreen, Side Curtains, 12 Volt Lighting and Starting Set. All usual Accessories.

Price £325.



The 11.9 h.p. CALCOTT Two-Seater.

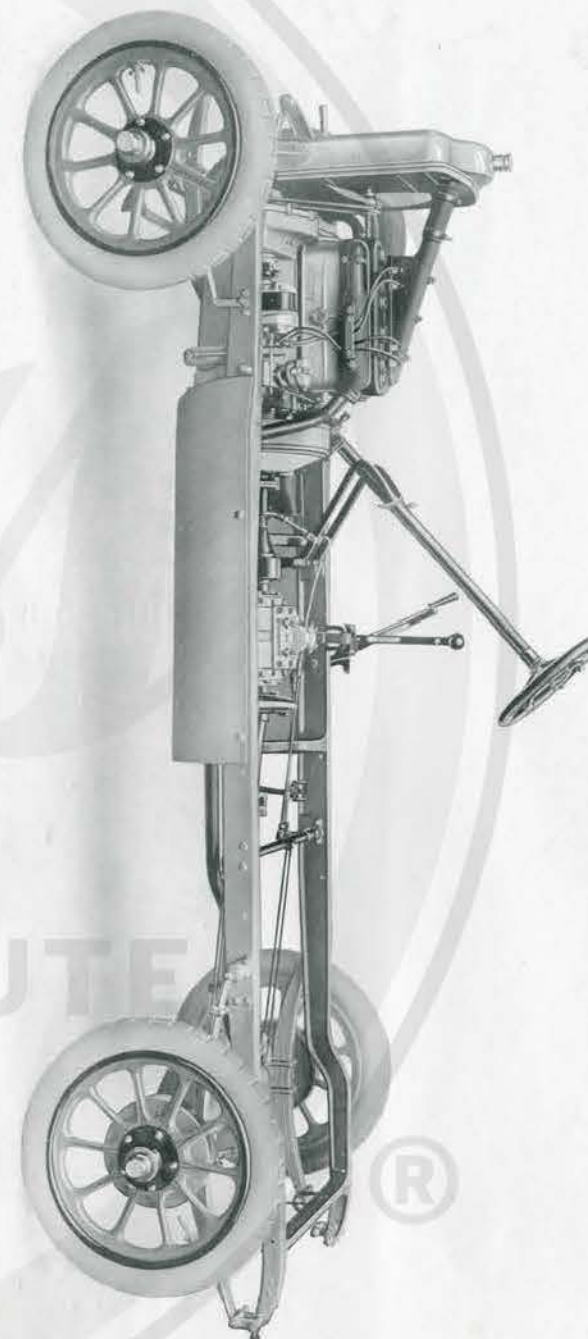


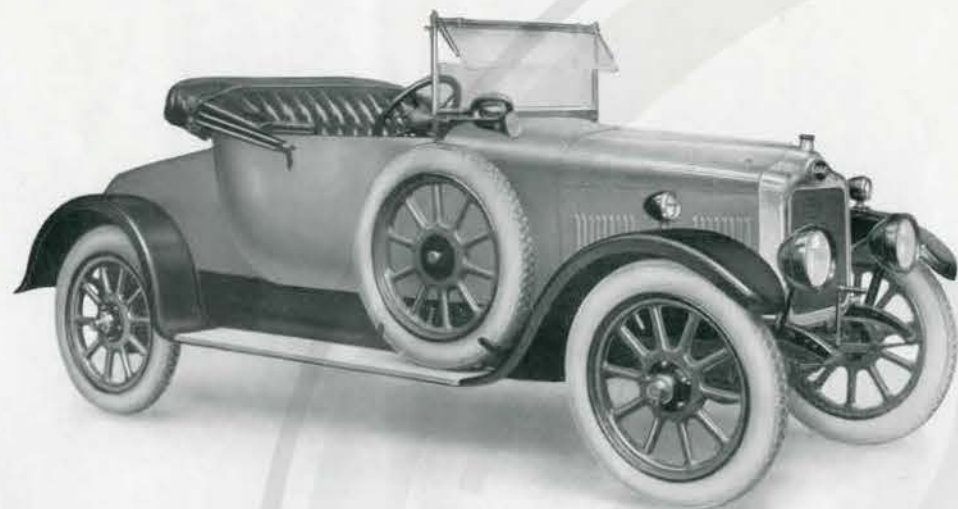
THE 11.9 Model is now well established. It is a car that satisfies the owner-driver — roominess, comfort and reliability are proved features of this car.

Roomy Two-three seater body, finished in Calcott Grey with Black Guards and Valances, and Upholstered in Black Leather, it is an extremely handsome car. Extra accommodation or storage capacity is provided by a Double Dickey Seat, which is low and well upholstered. Electric Lighting and Starting, Flush Instrument Board with Speedometer and Clock, Inside Mat, Black Hood Cover, Nickel Fittings. All usual Accessories.

Price £395.

THE 11.9 CALCOTT CHASSIS.





The 13.9 h.p. CALCOTT Two-Seater Touring.



NUMEROUS demands for a Calcott Car of larger dimensions and horse power than the standard 11.9 Models have led to the introduction of the 13.9 Coupe and Four-Seater Models.

The Upholstery and Finish are fully worthy of the Calcott tradition of comfort and roominess, while the new power unit has passed the severest tests on bench and road and will be found to sustain the reputation of the smaller engine for mechanical reliability.

Throughout, our aim has been to produce a moderate powered car of quality, at a cost in keeping with present day conditions, and it is our belief that in the 13.9 h.p. Calcott that ideal has been achieved.

Finished in Calcott Blue with Black Leather Upholstery, Electric Lighting and Starting, Speedometer and Clock, Hood Cover, Nickel Fittings and usual Accessories.

Price £450.



Finished Calcott Blue, Upholstered in Black Leather.

13.9 CALCOTT Four-Seater Touring - - £475.



13.9 CALCOTT Coupé - - - - £525.

Finished Royal Blue, Upholstered in Blue Leather.