

CALTHORPE

12/20 H.P. MODEL, 1923

Specification

ENGINE: Four cylinders, 69×100. Aluminium pistons, tubular connecting rods and special exhaust manifold. Water Cooling by pump; positively driven dynamo; new type accessible oil pump and filter; large oil filler and level rod.

CLUTCH: Single plate—new type.

GEAR BOX: Four-speed and reverse; built as a unit with the engine.

IGNITION: High-tension Magneto, with advance and retard.

CARBURETTER: Horizontal automatic type, with air shutter for starting.

FRONT AXLE: New design greatly strengthened.

BACK AXLE: Spiral bevel drive with Timken roller bearings throughout; both brakes on back wheels.

SPRINGING: Half-elliptic springing, improved type front and rear.

STEERING GEAR: Entirely on ball-bearings.

GREASE GUN LUBRICATION to all shackles, steering, swivel and other bearings.

Hand control for both magneto and carburetter.

EQUIPMENT: Five detachable steel wheels, with Dunlop Cord Tyres 760×90; Brolt Lighting and Starting set (12 volt) with five lamps; Speedometer with trip recorder; comprehensive equipment of tools etc.

BODYWORK by Mulliners Limited, All-weather type, upholstered in best leather, body aluminium panelled throughout and of exceptionally high-class finish. Two-seater body has Victoria Hood, making it almost a Coupe. Four-seater body has All-weather Hood, extra wide doors and adjustable bucket seats in front.

Calthorpe

1923

All Weather Models.

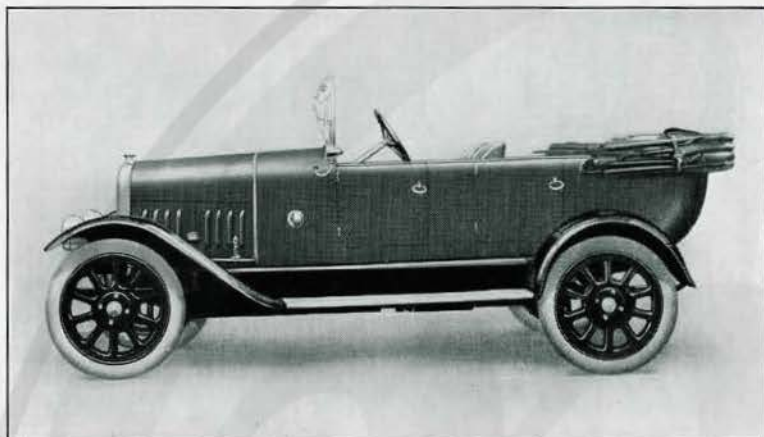


Telegrams & Cables
"CHASSIS"
BIRMINGHAM
National Telephone
35 & 36 Two Lines
VICTORIA.

Alexander Motors
Sempie St Edinburgh. &
38, GT, Western Rd Glasgow.

CALTHORPE MOTOR CO. (1912) LTD.

CHERRYWOOD ROAD
BORDESLEY GREEN
BIRMINGHAM



CALTHORPE 4-SEATER ALL WEATHER MODEL

Price - - **340** Guineas

The Four-Seater Model

LUXURIOUS four-seater All-weather body, by Mulliners Limited, upholstered in best leather. Adjustable bucket seats in front; exceptionally wide doors to allow of easy entrance. Body aluminium panelled, and of very high-class finish.

EQUIPMENT:

Four-speed Gate Change Gear; five steel wheels, with 710 by 90 Dunlop Cord Tyres; Brolt Electric Self-starter and lighting set (five lamps); Electric Horn; Spring Gaiters; Speedometer—with trip recorder; double adjustable wind screen; complete kit of tools.

CALTHORPE

10-15 H.P.

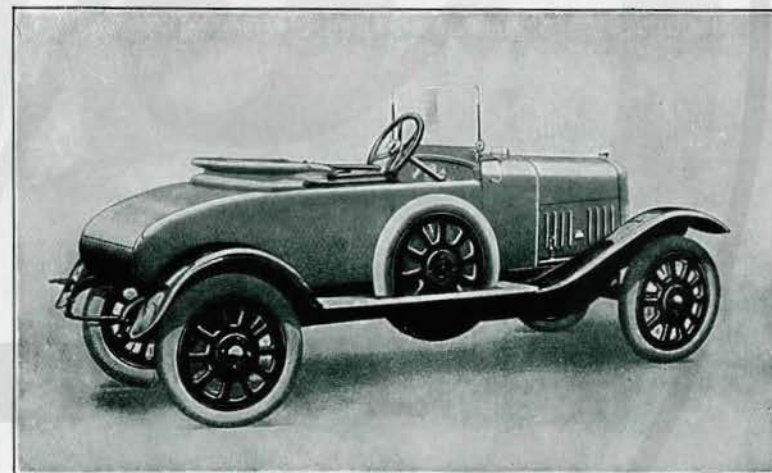
ALL WEATHER MODELS



1923



COMPLETE *with* ELECTRIC
LIGHTING SET *and* SELF-
STARTER, FULL EQUIP-
MENT *and* EXTRA WHEEL
with TYRE

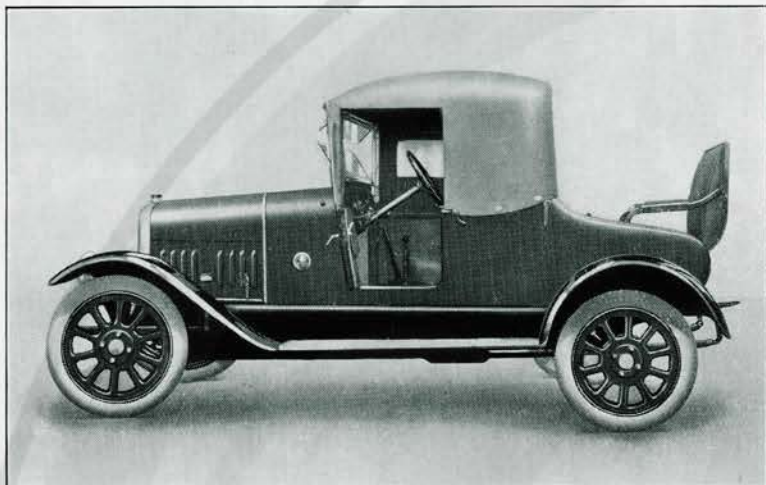


CALTHORPE 2-SEATER STANDARD MODEL

Price - - **285** Guineas

EQUIPMENT:

Four-speed Gate Change Gear; five steel wheels, with 26 by 3 in. Dunlop Cord Tyres; Brolt Electric Self-starter and Lighting set (five lamps); Electric Horn; Spring Gaiters; single wind screen; hood; Mulliner bodywork; upholstered Pegamoid; dickey seat; complete kit of tools.



CALTHORPE 2-SEATER ALL WEATHER MODEL

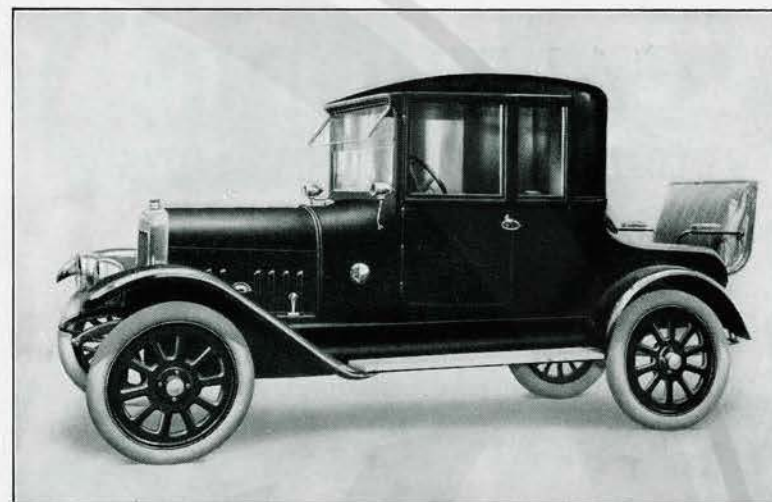
Price - - **325** Guineas

The Two-Seater Model

ROOMY two-seater All-weather body, by Mulliners Limited, upholstered in best leather. Aluminium panelled, with extra large dickey seat affording comfortable seating for two people. Exceptionally high-class finish.

EQUIPMENT :

Four-speed Gate Change Gear ; five steel wheels, with 710 by 90 Dunlop Cord Tyres ; Brolt Electric Self-starter and Lighting set (five lamps) ; Electric Horn ; Spring Gaiters ; Speedometer—with trip recorder ; double adjustable wind screen ; complete kit of tools.



COUPÉ—TWO-SEATER

Price - - **400** Guineas

Coupé—Two-Seater

FULL Equipment. Mulliner body - work. Upholstered either Bedford Cord or best Leather. Three - quarter Light, half - drop head.

EQUIPMENT :

Four-speed Gate Change Gear ; five steel wheels with 710 by 90 Dunlop Cord Tyres ; Brolt Electric Self-starter and Lighting set (5 lamps) ; Electric Horn ; Spring Gaiters ; Speedometer—with trip recorder ; double adjustable wind screen ; complete kit of tools.

CALTHORPE

10-15 H.P. MODEL, 1923

Specification

ENGINE: Four cylinders, 65×95. Aluminium pistons, tubular connecting rods and special exhaust manifold.

CLUTCH: Single plate—new type.

GEAR BOX: Four-speed and reverse.

IGNITION: High-tension Magneto.

CARBURETTER: Horizontal automatic type.

BACK AXLE: Spiral bevel drive.

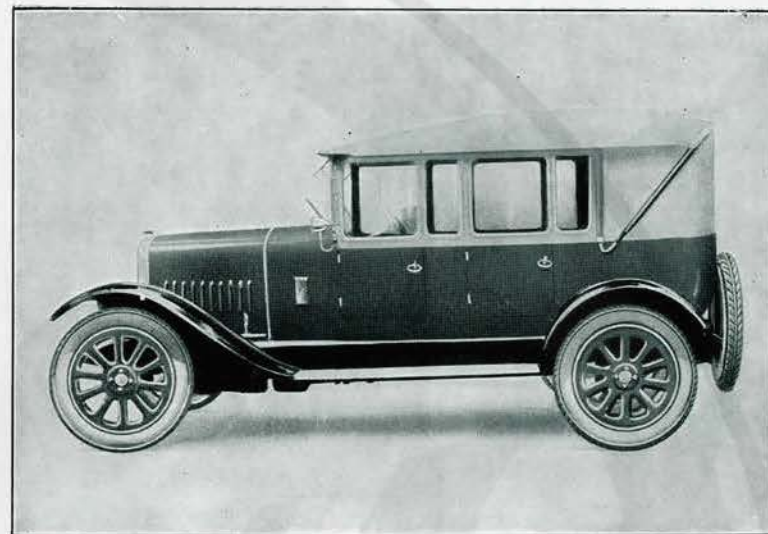
SPRINGING: Half-elliptic springing, improved type front and rear.

GREASE GUN LUBRICATION to all shackles, steering, swivel and other bearings.

Hand control for both magneto and carburetter.

EQUIPMENT: Five detachable steel wheels, with Dunlop Cord Tyres; Brolt Lighting and Starting set, with five lamps; Speedometer—with trip recorder (except on 285 Guineas Model); comprehensive equipment of tools, etc.

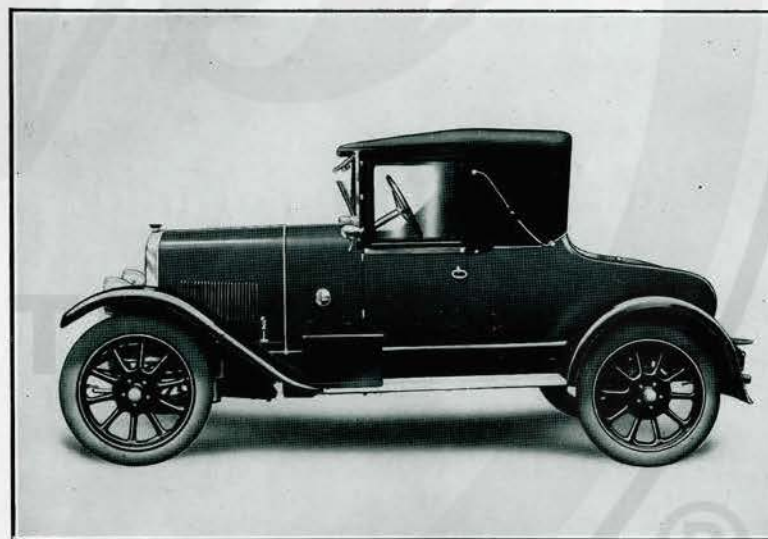
BODYWORK by Mulliners Limited, All-weather type, upholstered in best leather. Body is aluminium panelled and of exceptionally high-class finish. FOUR-SEATER body has adjustable bucket seats in front and extra wide doors to allow of easy entrance.



12/20 H.P.

CALTHORPE 4-SEATER ALL WEATHER MODEL

Price - - **410** Guineas



12/20 H.P.

CALTHORPE 2-SEATER MODEL

Price - - **410** Guineas