

BIANCHI CARS

PE S.5 BIANCHI NORMAL CHASSIS—SPECIFICATION.

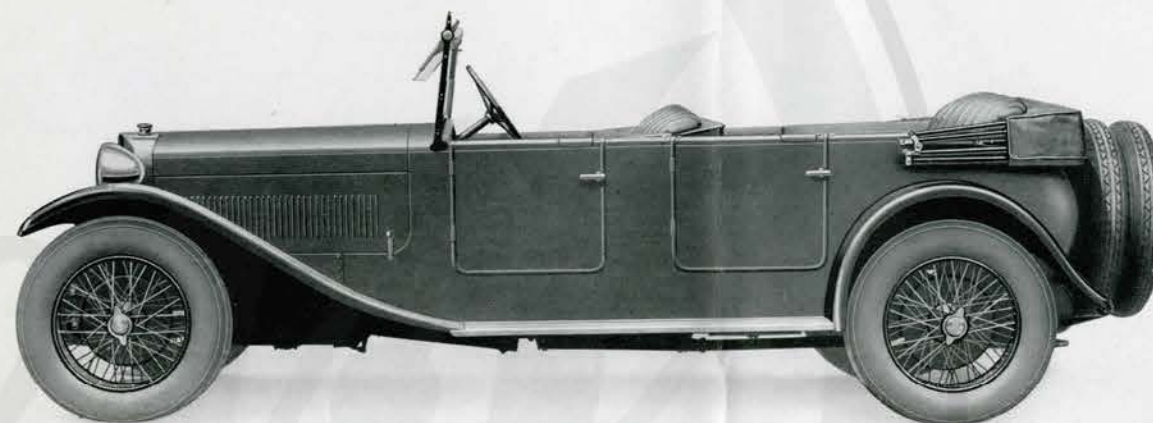
Monobloc, 4-cylinders 64 m/m. bore \times 100 m/m. stroke; rating 10.4, 1,300 cc.
Of aluminium alloy, with three-bearing crankshaft, connecting rods of "I" beam stampings. Cylinder head detachable.
Mushroom type, overhead, operated by push rods.
Forced feed throughout, including overhead valve mechanism. The chassis is lubricated by Tecalemit Grease Gun.
Marelli Magneto.
Marelli.
Gravity tank fitted under scuttle dash; capacity, $5\frac{1}{2}$ gallons.
Thermo-syphon.
Single plate, dry, a steel disc being gripped between two Ferodo plates; very light and progressive in action.
Bianchi patent oscillating type, on front end of torque tube, connected to cross member by a spherical joint. Ratios: Top, 5.25; 3rd, 8.75; 2nd, 13; 1st, 18.
Fully enclosed.
Banjo type, fully floating. Final drive by spiral bevel.
"I" Stamping.
Four wheel brake system operated by foot pedal. Rear brakes operated by hand lever. Internal expanding with very large drums.
Hartford front and rear. **Wheel Base.** 9 ft. 1 in.
Semi-elliptic **Track.** 4 ft. 2 ins.
Dunlop 730 \times 130 m/m.

Chassis Price: £255

PE 20 BIANCHI NORMAL CHASSIS—SPECIFICATION.

4-cylinder, 78 m/m. bore \times 120 m/m. stroke; rating 15 h.p., 2300 cc.
Monobloc, with three-bearing crankshaft, connecting rods of "I" section stampings, pistons of aluminium alloy, cylinder head detachable.
Mushroom type, overhead, operated by push rods with return springs.
Forced feed throughout, including overhead valve mechanism.
Marelli Magneto.
Marelli.
Vacuum fed from tank at rear, capacity 14 gallons.
By pump circulation.
Single plate, dry, a steel disc being gripped between two Ferodo; plates very light and progressive in action.
Bianchi patent oscillating type, on front end of torque tube, connected to cross member by spherical joint. Ratios: Top 4.4; 3rd, 7.5; 2nd, 10.5; 1st, 16.5.
Enclosed.
Four-wheel brake system operated by foot pedal. Back brakes operated by hand. Internal expanding type with large drums.
Two half sections. Final drive by spiral bevel gearing through a differential consisting of four star wheels and two sun wheels.
"I" Stamping. **Springs.** Semi-elliptic.
Hartford, front and rear. **Wheel Base.** 10 ft. 4 ins.
Dunlop 775 \times 145 **Track.** 4 ft. 6 ins.

Chassis Price: £365



15/60 H.P. BIANCHI SILENT SPORTS SPECIFICATION.

- Engine.** Monobloc, 4-cylinder, 78 m/m. bore \times 120 m/m.; stroke, 2,300 cc.; B.H.P., 60 at 3,000 r.p.m. Three-bearing crankshaft with Bianchi Special Balancers. Treasury rating, 15 H.P. Tax, £15.
- Valves.** Mushroom type extra large, operated by push rods, with return springs, very silent in operation.
- Body.** Aluminium panelled, very light in construction, to seat four, with bulbous back and low lines.
- Wheels.** Six Rudge Whitworth wire wheels fitted with tyres.
- Brakes.** All four-wheel brakes are operated by Dewandre Servo, giving very light and progressive braking at all speeds. Hand brake operates on rear wheels only.
- Radiator.** Vee-fronted Honeycomb radiator giving effective cooling, and of pleasing streamline appearance.

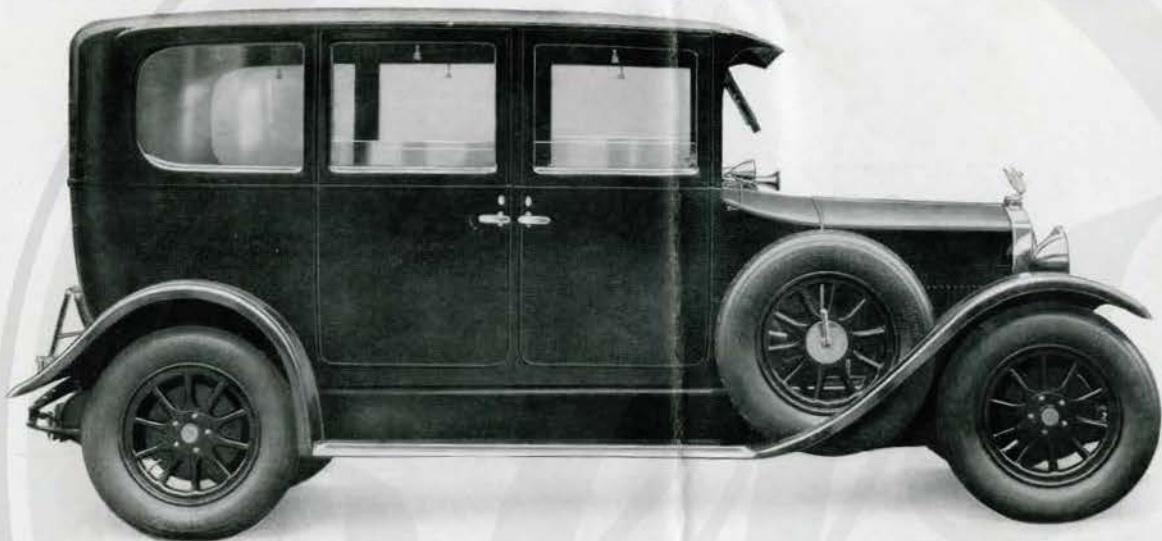
Extra for Sixth Wheel and Tyre, £6.

„ „ Dewandre Servo Brake Mechanism, £15.

Price:

	Chassis £395.
	Complete with Monza Type 4-seater Body, £525.

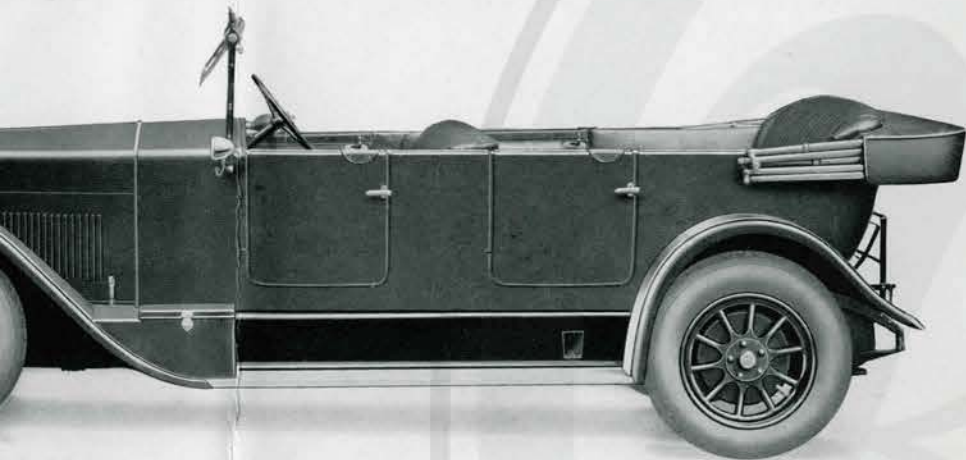
8761



10/30 H.P. TYPE S.5 BIANCHI SALOON SPECIFICATION.

- Body.** Constructed of finest quality well-seasoned English Ash, strengthened where necessary with mild steel body plates. Panelling of stout gauge aluminium, the upper framing and all doors being completely covered with aluminium.
- Windows.** Sliding into the lower part of the doors when not in use, operated by special lifters with ratchet adjustment. The rear quarter glasses and back light are fixed. Silk blinds are fitted to all windows.
- Upholstery.** In finest quality English Leather or Bedford Cord to choice, with head cloth and laces to match. Pile carpet is fitted to both front and rear compartments. Detachable arm rests are fitted to both sides of the rear seat. The whole is constructed to give the maximum of comfort.
- Seating.** To seat four: two in front and two in the rear seat. The front seat is in one piece and is adjustable.
- Paintwork.** The complete car is painted in first-class coach style in colours to choice, and finished with three coats of finest durable body varnish.
- Woodwork.** The surround of the instrument board is of Walnut with cubby holes on each side, the doors and rear quarters are finished with waist rail panels to match.
- Doors.** All doors are hung on best quality coach hinges, with slam locks, and fitted with special locking device.
- Tyres.** Dunlop 730 x 130.

Price: £450
Or on 15/50 Chassis £565



15/30 H.P. TYPE S.4 BIANCHI STANDARD TOURER SPECIFICATION.

Body of best material throughout, with special attention to lightness combined with strength and rigidity. Four large doors are provided, fitted with slam locks and inlaid mahogany on the inside.

Wind type, of celluloid, fitting in holes in the doors and panels, small nickel studs are provided to cover the holes when not in use. The curtains are stored in a compartment at the back of the rear seat.

Full man all-weather hood in black water-proof material, with double flap, which is clipped to the side curtains, giving very complete protection from draught and rain. The hood when down is covered by a hood envelope.

Best quality English Leather, with well-sprung seats and squabs. The floor is covered with a carpet to match at the back, and with rubber mats in front, a movable foot-rest locker is also provided.

Best quality colours, highly finished, giving a very lasting surface which will keep lustre and will not become dull. Colours: two shades of Blue, Blue Grey, Amaranth and wings and valances black. Lamps and all other bright parts nickel, including door frame and luggage-grid.

One part, adjustable.

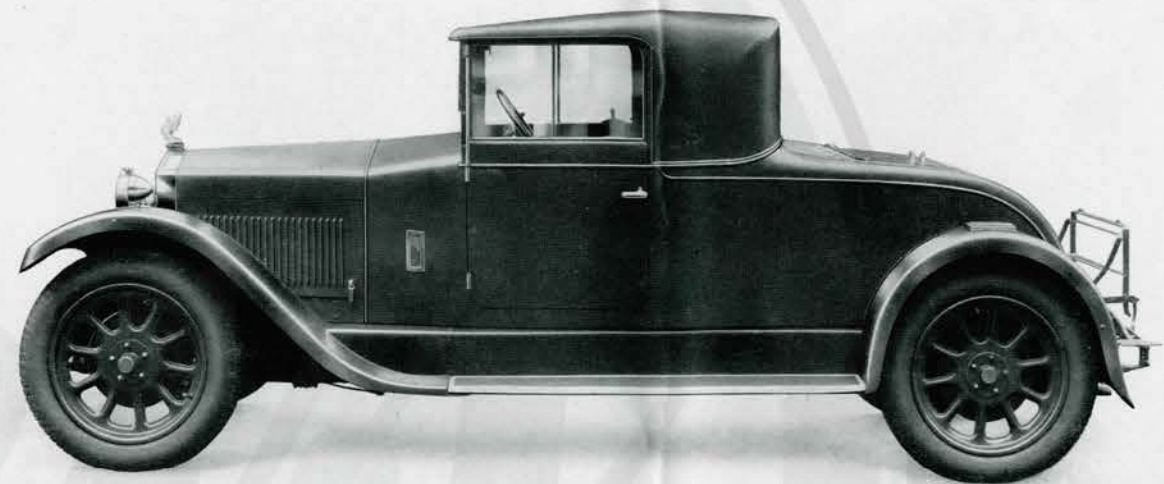
Large enough to seat three people.

Two-piece windscreen, the top portion being adjustable and fitted with an automatic wiper.

Comprises instrument board and two lock-up cupboards in inlaid mahogany.

Spare wheel and tyre, luggage-grid, speedometer, electric and bulb horns, and complete chassis equipment.

Price: £325.

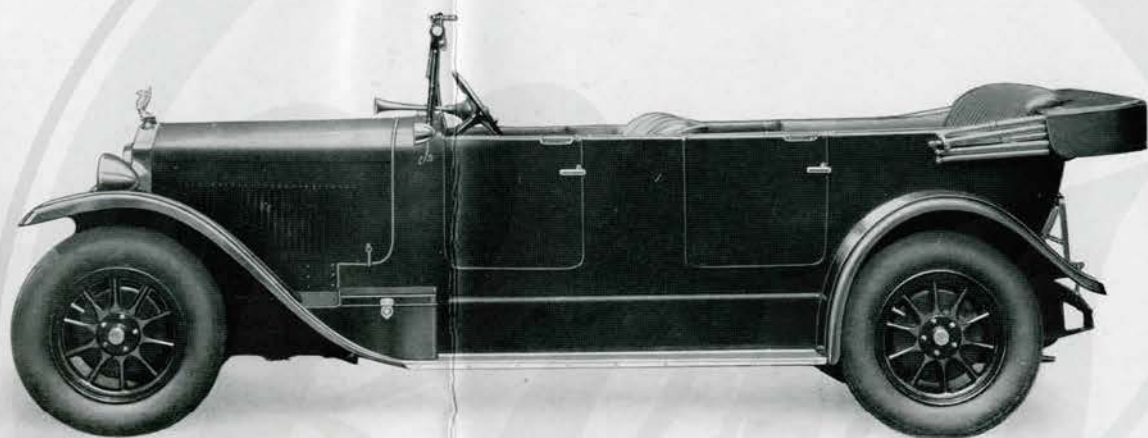


15/50 H.P. TYPE 20 BIANCHI CARLTON COUPÉ

SPECIFICATION.

- | | |
|--------------------------|--|
| Body. | The frame is built of the finest English Ash, the main pillars being strengthened with mild steel body plates. Panelling of hand-beaten aluminium, giving great lightness combined with strength. |
| Seating. | The front seat is in one piece, and is adjustable for leg room and slope of back rest. The dicky seat will seat two passengers in comfort. |
| Windscreen. | The front screen is of two panels, the top half opening outwards, and the bottom half fixed. The side shield glasses arranged in two pieces, the front piece fixed, and the rear piece to slide forward for signalling, etc. |
| Instrument Board. | This is fitted in a polished walnut surround containing cubby holes. The door fillets are made to blend with the instrument board and are highly French polished. |
| Upholstery. | The interior is upholstered in best quality leather to choice. The main and dicky cushions and back rest squabs are built on lace web spring frames, suitably padded to give a high degree of comfort. |
| Painting. | Cellulose finish in three colours to choice. |
| Spare Wheel. | This is carried on the offside front wing. |
| Ventilation. | Ventilators are fitted in each side of the scuttle dash. |
| Tools. | These are carried in a foot rest tool locker in the rear boot. |
| Equipment. | Spare wheel and tyre, clock, electric and bulb horns, and complete chassis equipment. |

Price: £525



15/50 H.P. TYPE 20 BIANCHI STANDARD TOURER

SPECIFICATION.

- Body.** Built of the best material throughout, with special attention to lightness combined with strength and rigidity. Four large doors are provided, fitted with slam locks, and inlaid mahogany on the inside.
- Side Curtains.** Rigid type, of celluloid, fitting in holes in the doors and panels; small nickel studs are provided to cover the holes when not in use. The curtains are stored in a cupboard at back of the front seat.
- Hood.** One man all-weather hood in black waterproof material, with double flap, which is clipped to the side curtains, giving very complete protection from draught and rain. The hood when down is covered by a hood envelope.
- Trimming.** Of best quality English leather, with well-sprung seats and squabs. The floor is covered with a carpet to match at the back, and with rubber mats in front; a movable foot-rest and locker is also provided.
- Paintwork.** In best quality colours, highly finished, giving a very lasting surface, which will keep its lustre, and will not become dull. Colours: two shades of Blue, Blue Grey, Amaranth Red—wings and valances Black. Lamps and all other bright parts nickel, including hood frame and luggage grid.
- Front Seat.** In one part, adjustable, thus giving increased rigidity to the body.
- Windscreen.** Two-piece windscreen, the top portion being adjustable and fitted with an automatic wiper.
- Little Dash.** Comprises instrument board and two lock-up cupboards in inlaid mahogany.
- Equipment.** Spare wheel and tyre, luggage grid, speedometer, clock, electric and bulb horns, and complete chassis equipment.

Price: £465 0 0