

SEASON 1930



BIANCHI CARS

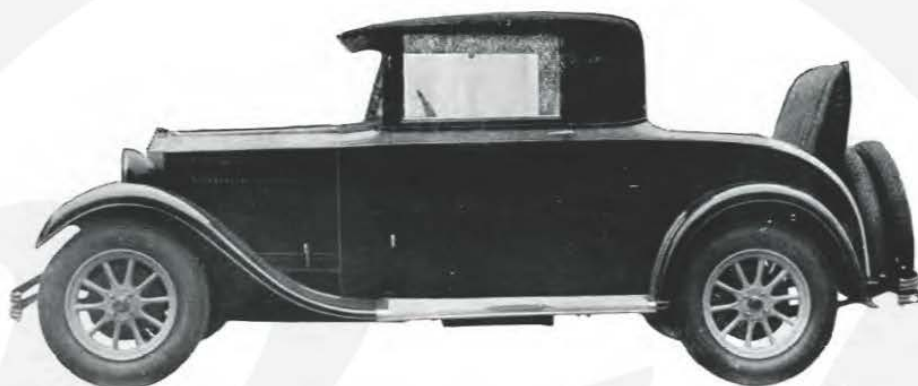
“The Car of the Connoisseur”

SOCIETA EDOARDO BIANCHI
(ENGLAND) LTD.

PALACE OF INDUSTRY, WEMBLEY, MIDDX.

Telephones: Wembley 3081-2.
Telegrams: Bianchauto, Wembley.

WORKS - MILAN, ITALY.



10/30 H.P. FIXED HEAD BIANCHI COUPÉ SPECIFICATION.

- Body.** Constructed of the finest quality well-seasoned Ash, strengthened where necessary with mild steel body plates. Lower portion of frame work is covered with Metal Panels, and top portion of the body is covered with High Grade Fabric.
- Windows.** Sliding into the lower part of the doors when not in use, and raised or lowered by means of winders.
- Upholstery.** In finest quality English leather or Bedford cord to choice with hood cloth and laces to match, pile carpet fitted, and the whole constructed to give the maximum of comfort.
- Seating.** To seat two—with further accommodation in the dickey seat, if required. The shape of seats and cushions are so constructed as to give the acme of comfort.,
- Paintwork.** Bonnet, wings, wheels, chassis and lower half of body are finished in Cellulose, making the whole car very suitable for the owner-driver.
- Woodwork.** Walnut surround to instrument board, rails, doors, etc.
- Doors.** All doors are hung on best quality hinges, with slam locks, and fitted with special locking device.
- Equipment.** The car is equipped with five artillery wheels and tyres, Bosch electric horn, internal mirror, rear blinds, internal electric light, windscreen wiper, and complete chassis equipment.

Price : £370

If fitted with 6 Rudge Whitworth Wheels and Tyres £15 extra.

10/30 H.P. TYPE S.5 BIANCHI NORMAL CHASSIS

Engine.	Monobloc, 4-cylinders 64 m/m. bore \times 100 m/m. stroke; rating 10.4, 1,300 cc.
Cylinders.	Of aluminium alloy, with three-bearing crankshaft, connecting rods of "I" beam stampings. Cylinder head detachable.
Valves.	Mushroom type, overhead, operated by push rods.
Lubrication.	Forced feed throughout, including overhead valve mechanism. The chassis is lubricated by Tecalemit Grease Gun.
Ignition.	Bosch Dynamo-Coil.
Starting & Lighting.	Bosch. 12 volt.
Petrol Supply.	Gravity tank fitted under scuttle dash; capacity, 8 gallons.
Cooling.	Thermo-syphon.
Clutch.	Single plate, dry, a steel disc being gripped between two Halo plates; very light and progressive in action.
Gear-box.	Bianchi patent oscillating type, on front end of torque tube, connected to cross member by a spherical joint. Ratios: Top, 5.77; 3rd, 8.75; 2nd, 13; 1st, 18. Fully enclosed.
Propeller Shaft.	Banjo type, fully floating. Final drive by spiral bevel.
Rear Axle.	"I" Stamping.
Front Axle.	Four wheel brake system operated by foot pedal. Rear brakes operated by hand lever. Internal expanding with very large drums.
Brakes.	Semi-elliptic.
Springs.	730 \times 130 m/m. Pirelli.
Tyres.	Track. 4 ft. 8 ins. Wheel Base. 9 ft. 2 in.

Chassis Price: £255

15/50 H.P. TYPE 20 BIANCHI NORMAL CHASSIS

Engine.	4-cylinder, 78 m/m. bore \times 120 m/m. stroke; rating 15 h.p., 2300 c.c.
Cylinders.	Monobloc, with three-bearing crankshaft, connecting rods of "I" section stampings, pistons of aluminium alloy, cylinder head detachable.
Valves.	Mushroom type, overhead, operated by push rods with return springs.
Lubrication.	Forced feed throughout, including overhead valve mechanism.
Ignition.	Marelli Magneto.
Starting & Lighting.	Marelli. 12 volt.
Petrol Supply.	Vacuum fed from tank at rear, capacity 14 gallons.
Cooling.	By pump circulation.
Clutch.	Single plate, dry, a steel disc being gripped between two Ferodo plates; very light and progressive in action.
Gear-box.	Bianchi patent oscillating type, on front end of torque tube, connected to cross member by spherical joint. Ratios: Top 4.4; 3rd, 7.5; 2nd, 10.5; 1st, 16.5. Enclosed.
Propeller Shaft.	Four-wheel brake system operated by foot pedal. Back brakes operated by hand.
Brakes.	Internal expanding type with large drums.
Rear Axle.	Two half sections. Final drive by spiral bevel gearing through a differential consisting of four star wheels and two sun wheels.
Front Axle.	"I" Stamping.
Shock Absorbers.	Hartford, front and rear.
Tyres.	Pirelli Balloon 775 \times 145.
	Springs. Semi-elliptic. Wheel Base. 10 ft. 4 ins. Track. 4 ft. 6 ins.

Chassis Price: £355



10/30 H.P. TYPE S.5 WEYMANN SALOON SPECIFICATION.

- Body.** Genuine Licensed Weymann Saloon, fitted with four doors. Constructed of finest quality well-seasoned Ash. The framework is covered with high-grade fabric in various colours.
- Windows.** Sliding into lower part of doors when not in use. Operated by special lifters.
- Upholstery.** In finest quality leather or Bedford cord to choice. Pile carpets to both compartments. Pneumatic or spring cushions to choice, deeply padded to give the acme of comfort.
- Seating.** To seat five—two in the front seat, and three in the rear. The front seat is adjustable.
- Paintwork.** The bonnet, wings, wheels and chassis are finished in cellulose, making the whole car suitable for the owner driver.
- Screen.** The front screen is in one piece, and can be fully opened and fixed in any position.
- Fittings.** The body is complete with windscreen wiper; inside mirror; blind to rear window, operated from the driver's seat; pockets in the back of the front seat; pull-in door posts; snap-lock to three doors and a lock to the driver's door; ventilators in the dash.

Price complete : £375



10/30 H.P. TYPE "ROME" 4 DOOR SALOON SPECIFICATION.

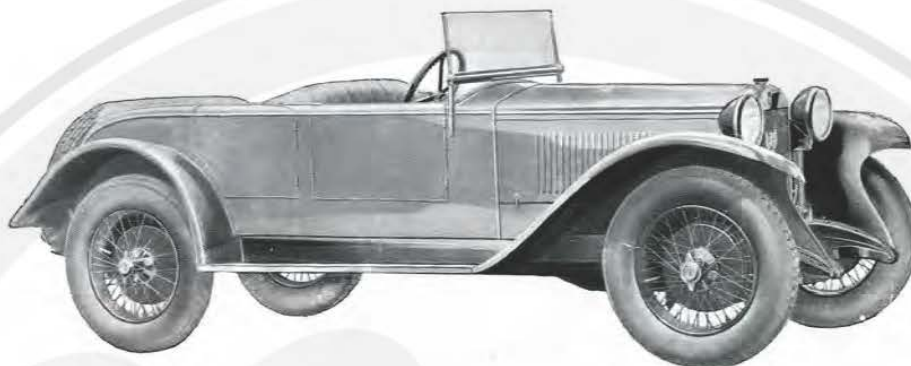
- Body.** Constructed of the finest quality well-seasoned Ash, strengthened where necessary with mild steel body plates. The lower portion of body covered with Metal Panels, and the top part above the rail covered with First Quality Fabric.
- Windows.** Sliding into the lower part of the doors when not in use and raised or lowered by means of winders.
- Upholstery.** In finest quality English leather or Bedford cord to choice with hood cloth and laces to match, pile carpet fitted to both front and rear compartments, and the whole is constructed to give the maximum of comfort.
- Seating.** To seat four—two in front and two in the rear seat. Front seat is in one piece and is adjustable, and the shape of seats and cushions are so constructed as to give the acme of comfort.
- Paintwork.** Bonnet, wing, wheels, chassis and lower half of body are finished in cellulose, making the whole car very suitable for an owner-driver.
- Woodwork.** Walnut surround to instrument board, rails, doors, etc.
- Doors.** All doors are hung on best quality hinges, with slam locks, and fitted with special locking device.
- Equipment.** The car is equipped with five artillery wheels and tyres, Bosch electric horn, internal mirror, rear blinds, internal electric light, windscreen wiper and complete chassis equipment.

Price : £395

If complete with rear trunk and six Rudge Whitworth wheels the Price is :

£420





10/30 H.P. BIANCHI MONZA TYPE SILENT SPORTS SPECIFICATION.

- Body.** Built of best material throughout ; the system of a very rigid frame work, covered with fabric instead of the usual metal panels, giving strength and rigidity with an absence of excessive weight.
- Doors.** Four doors are provided, fitted with slam locks.
- Hood.** This is of the disappearing type, that is, when not in use lays out of sight behind the rear seat.
- Front Screen.** Single piece screen hinging from bottom, allowing it to be set at any angle.
- Trimming.** Best quality English leather, well-sprung seats and squabs, floor covered with carpet to match the upholstery—rubber mats are supplied to front driver's seat.
- Paintwork.** Cellulose finish in two colours to tone with the upholstery and the fabric covering.
- Front Seat.** This is in one piece and is adjustable.
- Equipment.** Spare wheel and tyre, tool box (carried in running board), speedometer clock, electric bulb horn, windscreen wiper, and complete set of tools.

Price : £350





10/30 H.P. S.5 MODEL OCCASIONAL FOUR WEYMANN COUPÉ SPECIFICATION.

- Body.** Genuine Weymann construction and covered with fabrikoid in various colours.
- Seating.** Front seats, two adjustable bucket seats, and adjustable for leg room and slope of back rest. Rear seat has accommodation for two people in comfort.
- Windscreen.** Front screen is of the one piece type opening at the bottom and with adjustments to allow various openings. Windows slide into the lower part of doors when not in use and are raised or lowered by means of Winders.
- Instrument Board.** This is complete with all the necessary instruments, and has a surround of polished walnut.
- Upholstery.** Internal upholstery in best quality leather, pile carpets are fitted in both compartments; and pneumatic spring cushions deeply bedded to give the acme of comfort.
- Paintwork.** The wings, bonnet, wheels and chassis are finished in cellulose to match the colour of the exterior fabric.
- Spare Wheel.** This is carried at the rear of the luggage trunk.
- Tools.** These are carried in a separate compartment of the luggage trunk at the rear.
- Equipment.** Spare wheel and tyre, clock, Bosch electrical horn, and complete chassis equipment, including internal mirror, rear blind actuated from the driver's seat, internal electric light and roof ventilator. Rudge Whitworth wire wheels.

Price : £395





10/30 H.P. TYPE S.5. TOURING CAR SPECIFICATION.

- Body.** Built of the best material throughout, with special attention to lightness combined with strength and rigidity. Accommodation for four passengers. Four large doors are provided, fitted with slam locks and inlaid mahogany on the inside.
- Side Curtains.** Rigid type, of celluloid, fitting in holes in the doors and panels; small nickel studs are provided to cover the holes when not in use. The curtains are stored in a compartment behind rear seat.
- Hood.** One man all-weather hood in black waterproof material, with double flap, which is clipped to the side curtains, giving very complete protection from draught and rain.
- Trimming.** Of best quality English leather, with well-sprung seats and squabs. The floor is covered with a carpet to match at the back, and with rubber mats in front; a movable foot-rest and locker are also provided.
- Paintwork.** In best quality colours, highly finished, giving a very lasting surface, which will keep its lustre, and will not become dull. Colours: two shades of Blue, Blue Grey, Amaranth Red—wings and valances Black. Lamps and all other bright parts nickel.
- Front Seat.** In one part, adjustable.
- Windscreen.** Two-piece windscreen, the top portion being adjustable, and fitted with an automatic wiper.
- Equipment.** Spare wheel and tyre, luggage carrier, speedometer, clock, electric and bulb horns, and complete chassis equipment.

Price: £315

