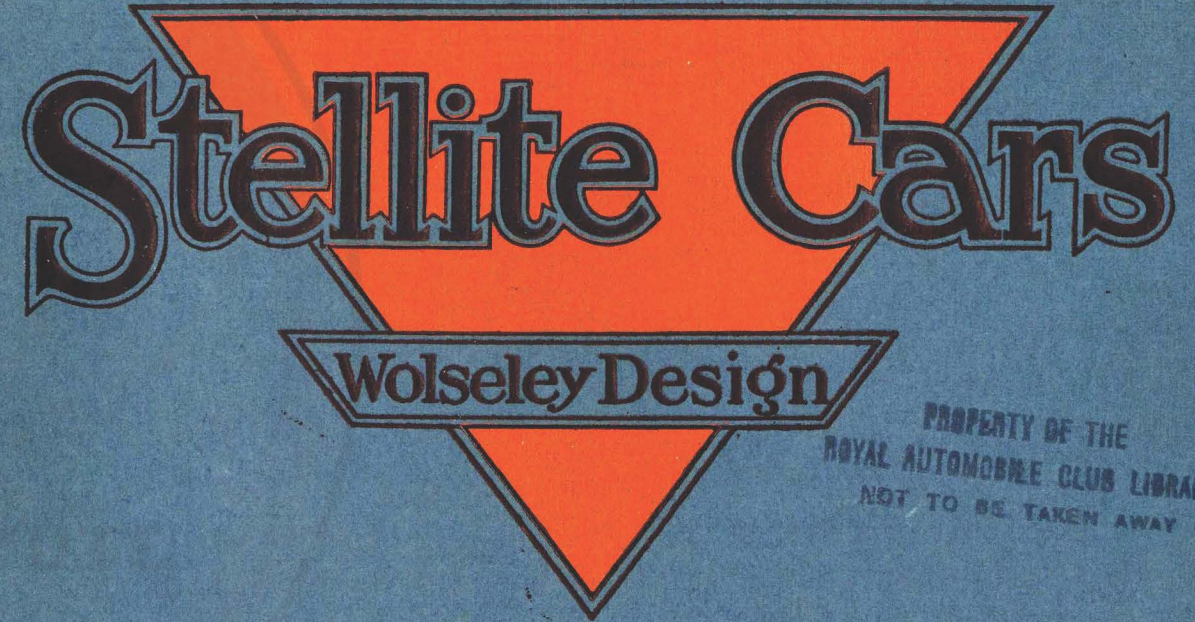


C. F. DINGWALL.



PROPERTY OF THE  
ROYAL AUTOMOBILE CLUB LIBRARY  
NOT TO BE TAKEN AWAY



**PRELIMINARY CATALOGUE,**  
**March, 1915**

All previous lists are hereby cancelled.  
We reserve the right to alter any part  
as may be considered advantageous, or  
to revise our prices without notice.

**C. F. DINGWALL.**

# STELLITE CARS

WOLSELEY DESIGN

PROPERTY OF THE  
ROYAL AUTOMOBILE CLUB LIBRARY  
NOT TO BE TAKEN AWAY

Manufactured by

**THE ELECTRIC & ORDNANCE ACCESSORIES CO. LTD.**

PROPRIETORS: VICKERS LIMITED

**ASTON, BIRMINGHAM**

TELEGRAMS: "EOA, BIRMINGHAM."

CABLE CODES: A.B.C. (5th Edition) & LIEBERS.

TELEPHONE: 340 EAST (6 lines).



## Terms and Conditions.

**L.** The prices quoted in this Catalogue are for nett cash on delivery Car in running order at our Works at Aston, Birmingham. The sort of Cars from our Works, whether by rail or road, is effected only at expense and risk of the purchaser. This rule will be strictly adhered to; no Car will be allowed to leave the Works before payment has been made. Repairs are executed strictly in rotation, as received. Alteration from standard will necessitate an extra charge.

**TEE.** The following guarantee is given in lieu of any guarantee or warranty, either expressed or implied by Statute or otherwise, and is limited to Stellite Cars bearing the Company's number-plate, bought either direct or from one of our duly authorised Agents, and no other guarantee or warranty whatsoever is given or is to be implied.

The Company guarantees that all precautions that are usual and reasonable have been taken to secure excellence of materials and workmanship in complete and perfect Cars sold by it. The Company undertakes, subject to the following conditions, to repair and make good, within a period of TWELVE MONTHS from the date of delivery of any Stellite Car from its works, any part or parts which may be discovered within such a period to be defective in material or workmanship, but the purchaser shall not be entitled to claim any pecuniary loss or damage.

If a defect is discovered in a Stellite Car, the defective part or parts must be returned to the Company's Works at Aston, Birmingham, carriage paid, within twenty-one days after such discovery. The sender must advise the Company at any time, in writing, under separate cover, that he desires to have such part or parts repaired or replaced free of charge under its guarantee, and must furnish the Company at the same time with the number of the Car on the Company's name-plate.

If a part or parts are, after careful examination, found to be defective, the Company will supply and fit the necessary replacements free of charge, if the Stellite Car is returned to its works; but in all other cases the Company

will, free of charge and carriage paid, forward to the sender the necessary replacements, to be fitted by him at his own expense and risk.

No guarantee whatsoever is given by the Company in respect of Tyres, Accessories and Proprietary Articles, or in respect of any Stellite Car from which the Company's number plate has been removed, altered, built over, or otherwise hidden from sight.

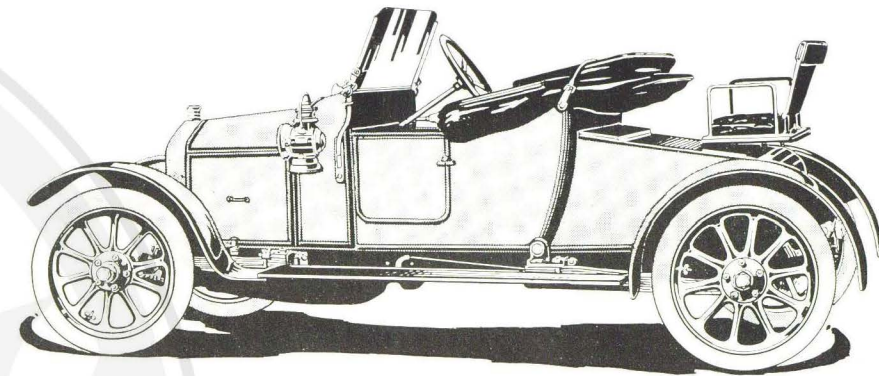
**TYRES.**—The price of the Car includes Dunlop Plain Tyres, as specified. Other makes to order at extra charge. In the event of the prices of tyres being increased or decreased, the Company reserves the right to revise the prices.

**DELIVERY.**—The Company will use its best endeavours to adhere as far as possible to the estimated delivery dates from time to time furnished, but it is agreed that no claim shall be made upon the Company in respect of any delay in delivery, or any claim arising therefrom, unless particularly provided for under a specially written arrangement.

**THE TERM "AGENT"** is used in a complimentary sense only, and those persons who style our agents are not authorised to advertise, incur any debts, or transact any business whatsoever on our account, other than the sale as principals of goods which they may purchase from us; nor are they authorised to give any warranty or make any representation on our behalf other than that contained in the guarantee herein.

**DEPOSITS.**—A deposit amounting to one-third the value of the order should accompany each order. Interest at the rate of 4 per cent. per annum will be allowed upon deposits.

**EXHIBITION.**—All goods are sold upon the condition that they are not to be exhibited at any Exhibition held in the United Kingdom of Great Britain and Ireland, without the previous written permission of the Company.



## Introductory.

THE STELLITE LIGHT CAR is the outcome of years of engineering experience gained in the manufacture of high-class Cars. It bears an unrivalled reputation for quality in every respect, being a product of the world-known Company, Vickers Limited.

It is a delightful car to handle, and meets in every way the requirements of those who desire an inexpensive car in first cost, and one which, in addition, is cheap to run and maintain. The minimum of attention is necessary to keep it in order, and very little motoring knowledge is needed to manage one of these ever-ready and reliable runabouts.

The capabilities of the Stellite Car in regard to speed, hill-climbing, acceleration, flexibility and smooth running, have been fully and severely tested by hundreds of owners in almost every part

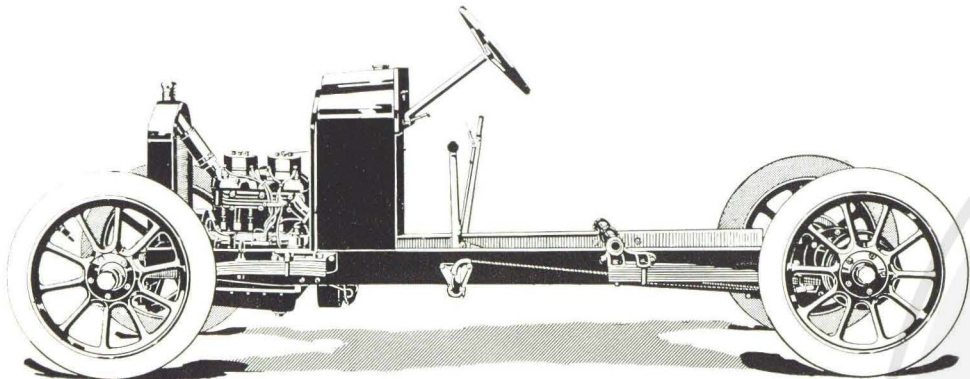
of the Kingdom, in the Colonies and elsewhere. Petrol consumption is low, steering is remarkably light, gear changing is easy, and the seating accommodation is comfortable. The clutch and brakes are smooth in action, the car holds the road well at all speeds, and is very light on tyres. The Car has a smart appearance.

Numerous big car owners are buying Stellite Cars for country house work in connection with golf, fishing, shooting and other sports, on account of their handiness. Army officers, also, find the Stellite Car most suitable, as it possesses a remarkable turn of speed; and as the form of suspension employed is perfect, there is no jolting or jarring, even when travelling over the worst of bumpy and rough roads.

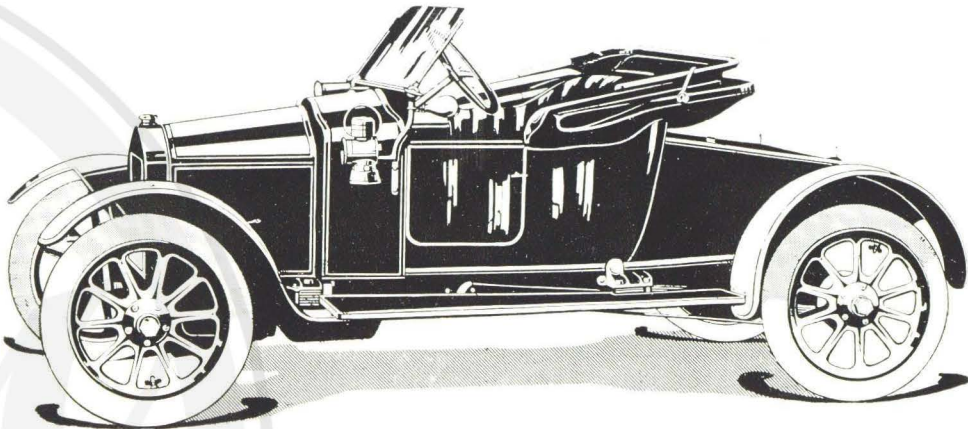
The annual tax is only £3 3 0.



ELLITE  
[ASSIS



STELLITE  
TWO-SEATER



PRICE for Two- or Three-Seater Chassis, as illustrated, and including Bonnet, Instrument Board with Oil Indicator, Magneto Switch and Variable Ignition Lever mounted on same; Change-Speed Bracket, and Jack, Pump and Tools . . . £142'10 0

SPECIFICATION.

GENERAL	Wheelbase, 8ft. 0in. (2m.44). Track, 3ft. 10in. (1m.17). Overall length of chassis, 10ft. 9in. (3m.28). Overall width of chassis, 4ft. 9in. (1m.45). Pressed Steel Sankey Detachable Wheels, fitted with 700 x 80 mm. Dunlop Plain Tyres. Cantilever springs to both front and rear wheels, of ample length. Chassis is specially sprung to suit weight of body.	AXLES	The front axle is of tubular construction, all the hubs running on Timken Tapered Roller Bearings. The rear axle is of the live type, driven by worm gearing, and fitted with Timken Tapered Roller Bearings.
	Number of cylinders, Four. Bore, 2 7/16in. (62mm). Stroke, 3 1/4in. (89mm). Normal revolutions per minute, 1,600. H.P. by Treasury Formula (also R.A.C. Rating), 9-45. Tax payable, £3 3 0	STEERING	The steering is irreversible, through a rack and pinion.
ENGINE	High-tension magneto with variable control.	BRAKES	Two independent brakes are fitted, both operated inside drums on the rear road wheels. They are internal, and actuated by a hand lever and foot pedal respectively, operating enclosed double-acting shoe brakes, and are equalised to both sides of the car.
IGNITION	Automatic equalising carburettor with gravity feed. Thermo-syphon circulation. Cone clutch faced with special fabric. Universally jointed shaft to combined gear box and live axle.	CONTROL	Single throttle control by pedal. Hand adjustment for slow running is provided on the instrument board.
FINISH	At normal engine revolutions the road speeds are :— 1st, 11 m.p.h.; 2nd, 27 m.p.h.; Reverse, 9 m.p.h., with standard two-seater car gear ratio. The range of speed on the top gear on the level is from 8 to 35 miles per hour. All changes of speed are operated by one lever.	PETROL CAPACITY	The petrol tank is mounted on the dash, and has a capacity of approximately six gallons.
		ROAD CLEARANCE	The minimum road clearance is 6 1/2in. (fully loaded).
		TURNING CIRCLE	The minimum turning circle with standard tyres is 35ft.
		FINISH	Standard finish, brass.  Metric dimensions are approximate.

**THE STANDARD BODY** is built in coach style, the cushions and squabs being deep and well sprung, the comfort usually associated with a high priced car being maintained. A large locker is provided at the back and a tray for tools under the driver's seat; dome-shaped mud-wings with inside shields and long running boards are fitted, and these, combined with the serviceable hood and wind-screen, afford every possible comfort with an exceptionally smart appearance.

**THE STANDARD FINISHES** are fawn with darker fawn mouldings, dark green with black mouldings and white line, and Wolseley Grey, No. 30. In all cars the upholstery is green with brass fittings.

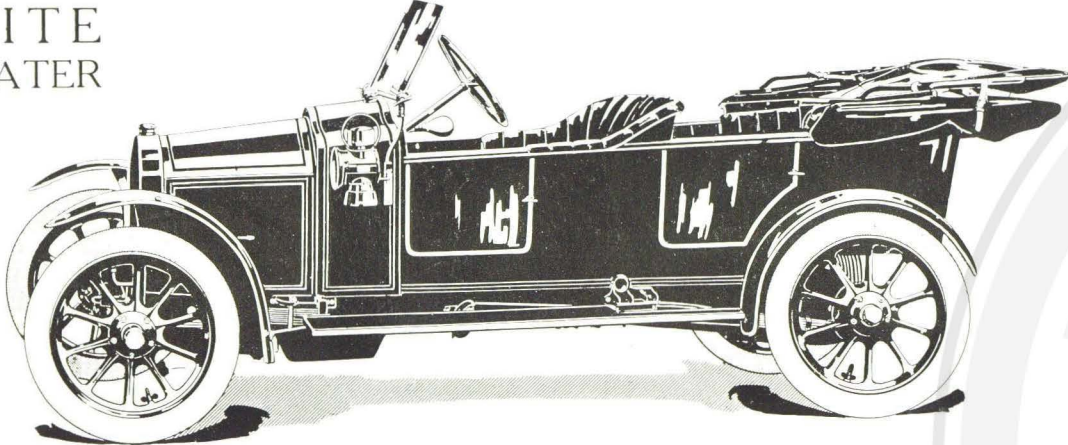
**EQUIPMENT.**—Lucas Side Lamps and a Dependence Tail Lamp, horn, jack, pump and tools.

(For Chassis specification see page 4)

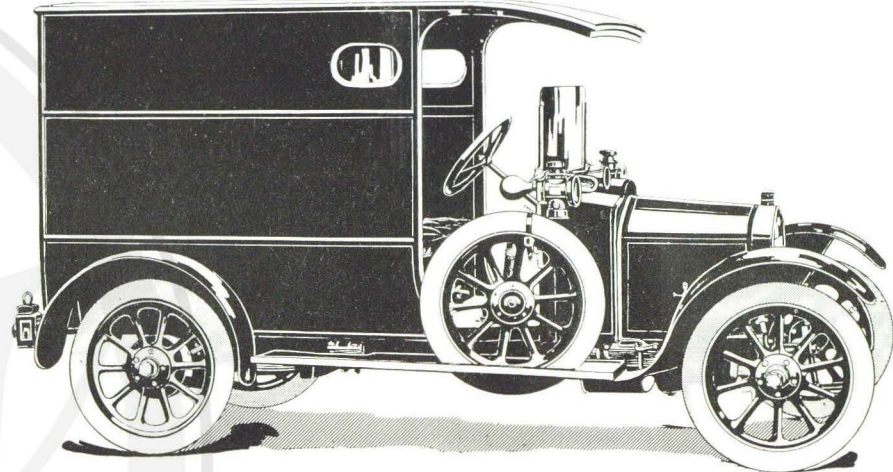
PRICE		£157 10 0	
Extra for Pressed Steel Sankey Detachable Spare Wheel, complete with 700 x 80 Dunlop Plain Tyre and Tube (a suitable bracket and wheel dish are provided on all cars without extra charge)	£3 15 0	Extra for Hinged Luggage Grille . . . . .	£1 7 6
Extra for Wrapper for Spare Wheel . . . . .	0 15 0	.. Back Number Plate, aluminium on black, and painting front number . . . . .	0 12 6
.. Dunlop Steel Studded Tyres . . . . . per Tyre . . . . .	1 5 0	.. Self-contained Acetylene Head Lamp (Howes and Burley, No. 1130) Polished Brass . . . . .	3 5 0
.. .. Grooved Tyres . . . . .	0 7 9	.. Head Lamp Bracket for same . . . . .	0 12 6
.. Folding Dickey Seat . . . . .	3 10 0	.. Lock-up Tool Box for Running Board (painted to suit body) . . . . .	1 2 6
.. Luggage Platform . . . . .	1 7 6	.. Leather Cover for Starting Handle . . . . .	0 2 6



# ELLITE REE-SEATER



# STELLITE DELIVERY VAN



This body has seating capacity for three persons, one in front and two behind. As in the case of the two-seater, the body is designed for comfort. Its appearance is particularly pleasing. It is fitted with hood and wind-screen as illustrated.

**THE STANDARD FINISHES** are fawn, with darker fawn mouldings, dark green with black mouldings and white line, and Wolseley Grey, No. 30. In all cars the upholstery is green with brass fittings.

**EQUIPMENT.**—Lucas Side Lamps and a Dependence Tail Lamp, horn, jack, pump and tools.

(For Chassis specification see page 4)

PRICE - £170 0 0

Extra for Pressed Steel Sankey Detachable Spare Wheel, complete with 700×80 Dunlop Plain Tyre and Tube (a suitable bracket and wheel dish are provided on all cars without extra charge)	£3 15 0	Extra for Hinged Luggage Grille	£1 7 6
Extra for Wrapper for Spare Wheel	0 15 0	“ Back Number Plate, aluminium on black, and painting front number	0 12 6
“ for Dunlop Steel Studded Tyres per Tyre	1 5 0	“ Self-contained Acetylene Head Lamp (Howes & Burley, No. 1130) Polished Brass	3 5 0
“ Grooved Tyres “ “	0 7 9	“ Head Lamp Bracket for same	0 12 6
		Lock-up Tool Box for Running Board (painted to suit body)	1 2 6
		Extra for Leather Cover for Starting Handle	0 2 6

THE STELLITE DELIVERY VAN has a maximum load-carrying capacity, with the driver, of 5 cwt. The body is of the box type, and can be painted any of the standard colours, as given on page 5. Lettering, according to requirements, extra.

Chassis for Van—as Specification on page 4, but fitted with stronger springs	-	-	£144 0 0
PRICE, including two side lamps, one tail lamp, horn, jack, pump and tools	-	-	£175 0 0

## EXTRAS

Extra for pressed steel Sankey detachable spare wheel, complete with 700×80 Dunlop plain tyre and tube (a suitable bracket and wheel dish provided without extra charge)	£3	15	0	Extra for Dunlop Grooved Tyres, per tyre	-	-	-	£0	7	9			
Extra for wrapper for spare wheel	-	-	-	0	15	0	Extra for Self-contained Acetylene Head Lamp (Howes & Burley No. 1130) Polished Brass	-	-	-	3	5	0
Extra for Dunlop Steel Studded Tyres, per tyre	-	-	1	5	0	Extra for Head Lamp Bracket for same	-	-	-	0	12	6	
						Extra for Leather Cover for Starting Handle	-	-	-	0	2	6	



# STELLITE CARS.

**EQUIPMENT.**—The following is a list of tools to be supplied with “Stellite” Car :—

SPANNERS (double ended) $\frac{3}{16}$ — $\frac{1}{4}$ in.	1 MOVABLE WRENCH.
“DITTO” $\frac{5}{16}$ — $\frac{3}{8}$ in.	1 PAIR PLIERS
“DITTO” $\frac{7}{16}$ — $\frac{1}{2}$ in.	2 MAGNETO SPANNERS
“SPANNER, $\frac{3}{16}$ and $\frac{1}{4}$ in.	1 HUB CAP SPANNER.
“TO” $\frac{5}{16}$ in. and $\frac{3}{8}$ in.	1 SCREW DRIVER, 7in. LONG.
“TO” $\frac{7}{16}$ in. and $\frac{1}{2}$ in.	1 HAMMER 9in. LONG (8 oz).
“CAN	2 STRAIGHT TYRE LEVERS.
PAIR OUTFIT	1 WASHER FOR CYLINDER HEAD (as Spare).

**KEY** to accommodate Tools, etc., is provided under the driver's seat in cars. An additional tray can be provided at extra cost of 10/-, when needed.

**PARTS.**—Orders for spare parts when sent by post should be addressed to Works at Aston, Birmingham. To avoid any possibility of error it is essential that the number of the car—shown on the Company's nameplate and horse power, should be given, and if possible the number of the parts from Spare Part Catalogue.

**NOTICE.**—For the convenience of their customers The Electric and Motor Accessories Company Ltd. have made arrangements for the issue of their Policies to cover the undermentioned risks. Policies can be obtained through our Offices or through any of our Agents.

INSURANCE TO CAR.	LEGAL DEFENCE.	BONUS.
THEFT.	MEDICAL EXPENSES.	THIRD PARTY.
ACCIDENTAL USE.	FREE TECHNICAL ADVICE.	SEA TRANSIT.

In the event of total destruction or loss, the full amount insured is paid in cash.

Repairs after accident. In the event of accident, repairs up to any amount may be put in hand immediately, either with ourselves or with one of our authorized agents, without waiting for permission of the Insurers, provided the Repair Permit is produced, which, together with a list of authorized repairers is supplied with each Policy. Necessary temporary repairs or permanent repairs up to £10 may be executed immediately by any competent repairer without consent of the Insurers.

**REPAIRS.**—All parts sent to be repaired must be forwarded carriage paid, and bear the sender's name, address, and the car number. Cars which are sent for repairs will only be driven by our employees at the risk and responsibility of the owners. Repairs to a car which is not delivered to the Works in charge of the owner's driver, are undertaken only on the assumption that the owner gives us authority to drive the car on his behalf. Customers' cars sent to us for any purpose are only received at owner's risk, and we accept no responsibility for loss or damage to same arising from fire or any other cause.

Repairs may be forwarded to our Works at Aston, Birmingham, or to our London Agents' Repair Works, Wolseley Motors Limited, Gatliff Road, Commercial Road, Pimlico.