

STAR SPECIFICATIONS

18-50 h.p. 6-cylinder, O.H.V.

ENGINE. Six Cylinders. Bore and Stroke, 69 mm. by 110 mm. Total piston displacement, 2,470 c.c. Treasury rating, 17.9 h.p. Crankshaft and camshaft each carried in 7 bearings. Detachable head, with overhead valves operated by push rods and rockers.

LUBRICATION. Forced-feed to all bearings by plunger pump. Very accessible multiplate filter.

COOLING. Film type radiator and centrifugal pump. Circulation arranged to keep cylinder heads cool and cylinders at their most efficient temperature.

CARBURETTER. New type Solex. Vacuum feed from 10 gallon tank at rear.

CLUTCH. Single dry plate, carried direct on first motion shaft of gearbox. Clutch stop fitted. Light pedal operation through gears.

GEAR BOX. Four forward speeds and reverse. Bolted direct to engine unit, with clutch and flywheel in dust-proof housing. Change speed and brake levers mounted to right or left of driver, as desired. Positive lock for all gears in neutral and reverse stop.

STEERING. Fully adjustable for wear. Very light, with road-shock damper fitted.

BRAKES. Patent, internal expanding shoes operated in 12-in. diameter steel drums to front and rear wheels. Foot pedal operates brakes on four wheels simultaneously, and hand lever two extra expanding brakes in rear wheel brake drums, giving six brakes in all. Hand and pedal

brakes fully independent. Easy adjustment without tools. Light and positive brake action.

FRONT AXLE. r-section stamping, specially designed for front wheel brakes. Car turning circle of 45-ft. diameter.

REAR AXLE. Spiral bevel, with ball bearings throughout. **SPRINGING.** Semi-elliptic front and rear. 48-in. rear springs underslung, taking both torque and drive. Shock absorbers fitted to both axles.

CONTROL. Clutch and brake pedals with accelerator pedal in centre. Ignition and throttle levers on fixed quadrant on steering wheel.

WHEELS. Dunlop Detachable steel spoked, with spare. Rubery bolt type wire wheels optional.

TYRES. Dunlop Cord 31-in. by 5.25-in. Low Pressure, reinforced.

ELECTRICAL EQUIPMENT. Lucas 12-volt system. Gear-driven dynamo integral part with engine. Starter carried in flywheel casing, well protected and easily detachable.

DIMENSIONS. Wheelbase, 10-ft. 3-in. Wheel track, 4ft. 8in. Road clearance, 8½-in. Overall length, 14-ft. 5-in. Overall width, 6-ft. Body space, 8-ft. Approximate weight of Chassis with equipment, 18 cwt.

Specifications are subject to Guarantee and Terms of Business, as current Catalogue, and are liable to alteration without notice.

CHASSIS EQUIPMENT. Patent 4-Wheel Brakes. Lucas 12-volt Lighting and Starting Set. Dipping Reflectors to Head Lamps. Shock Absorbers. Spare Wheel and Tyre. Vacuum Petrol Feed. Oil Indicator. Electric and Bulb Horns. Speedometer. Clock. Petrol Gauge. Enots Autoram Gun. Dash Lamp. Luggage Grid. Aluminium Embossed Number Plates. Licence Holder. Tool Kit.

(No rear wings or valances when chassis only is supplied.)

20-60 h.p. 6-cylinder, O.H.V.

ENGINE. Six cylinders in line, 75 mm. bore and 120 mm. stroke. Total piston displacement, 3,180 c.c. Treasury rating, 20.9 h.p. Seven-bearing crank-shaft. Overhead valves operated by rockers and push rods. Detachable head.

COOLING. Pump circulation, with large honeycomb radiator and fan, carefully designed to maintain engine at best working temperature.

LUBRICATION. Whole of valve gear positively lubricated from oil pump, which also delivers oil under pressure to main, big-end and camshaft bearings, pistons and gudgeon pins being supplied in form of spray. Multiple filter, very efficient and accessible.

IGNITION. High tension magneto.

CARBURETTER. New type Solex. With air cleaner. Vacuum petrol feed from 12-gallon tank at rear.

CLUTCH. Twin dry plate. Clutch stop fitted. Light pedal operation through gearing.

GEAR BOX. Four speeds and reverse. Bolted direct to engine unit. Positive lock in neutral and reverse stop. Right hand or Central Control as desired.

STEERING. Worm and complete wheel, adjustable for wear. Very light in use.

BRAKES. Patent. Brake pedal operates simultaneously internal expanding shoes in 16-in. drums on all the wheels. Hand brake lever operates extra pair of shoes in rear

wheels, giving 6 brakes in all. Handwheel adjustment to pedal and lever. Easy brake action with maximum efficiency.

FRONT AXLE. Specially designed drop-forging for accommodating front wheel brakes.

REAR AXLE. Spiral bevel type, with ball bearings and ball thrusts.

SPRINGS. Semi-elliptic, 54-in. long at rear, underslung, taking both torque and drive.

SHOCK ABSORBERS. Fitted to both axles.

CONTROL. Ignition and throttle on quadrant above steering wheel. Clutch and brake pedals, with accelerator pedal in centre.

WHEELS. Dunlop detachable steel spoked, or Rudge-Whitworth detachable wire, with spare.

TYRES. Dunlop, 33-in. by 6-in. Low pressure, heavy service, reinforced.

ELECTRICAL EQUIPMENT. Lucas 12 volt. Dynamo driven in tandem with magneto by accessory drive shaft.

DIMENSIONS. Wheelbase, 11 ft. 3-in. Wheel track, 4-ft. 8-in. Road clearance 8½-in. Overall length, 15-ft 4-in. Overall width, 6-ft. Body space, 8-ft. 9-in. Approximate weight of Chassis with equipment, 23½ cwt.

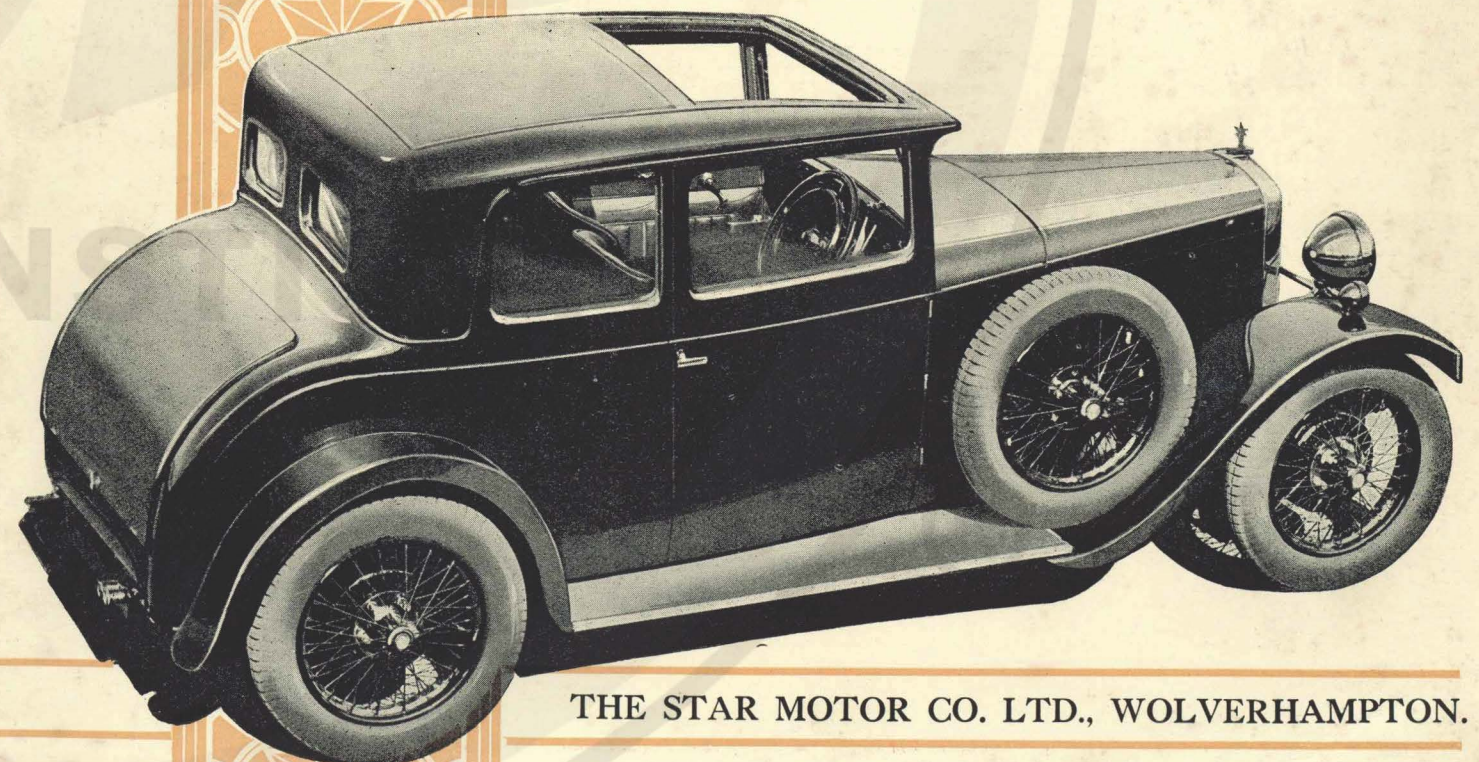
Specifications are subject to Guarantee and terms of Business, as current Catalogue, and are liable to alteration without notice.

CHASSIS EQUIPMENT. Patent 4-wheel Brakes, Lucas 12-volt Lighting and Starting Set. Dipping Reflectors to Head Lamps. Shock Absorbers. Spare Wheel and Tyre. Vacuum Petrol Feed. Oil Indicator. Electric and Bulb Horns. Speedometer. Clock. Petrol Gauge. Enots Autoram Gun. Dash Lamp. Luggage Grid. Aluminium Embossed Number Plates, Licence Holder. Tool Kit.

(No rear wings or valances when chassis only is supplied.)



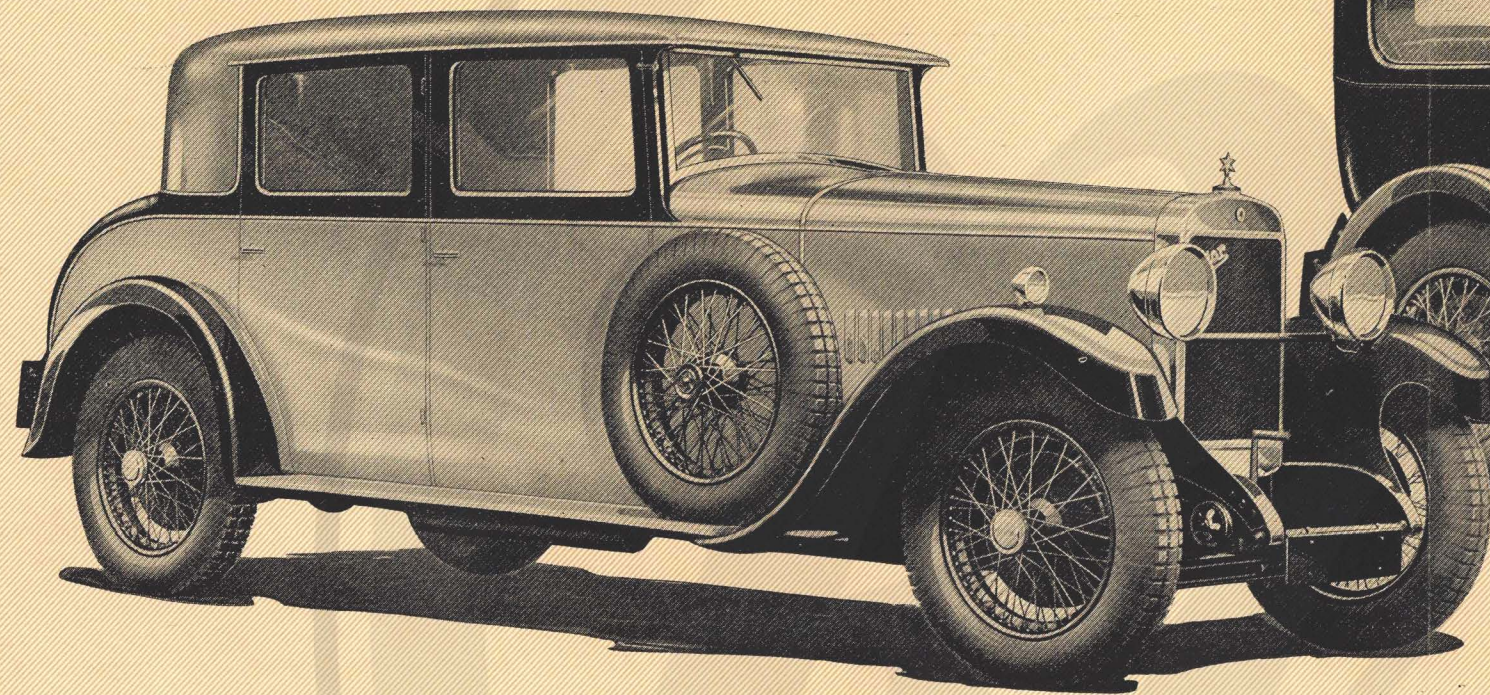
1930 STAR CARS



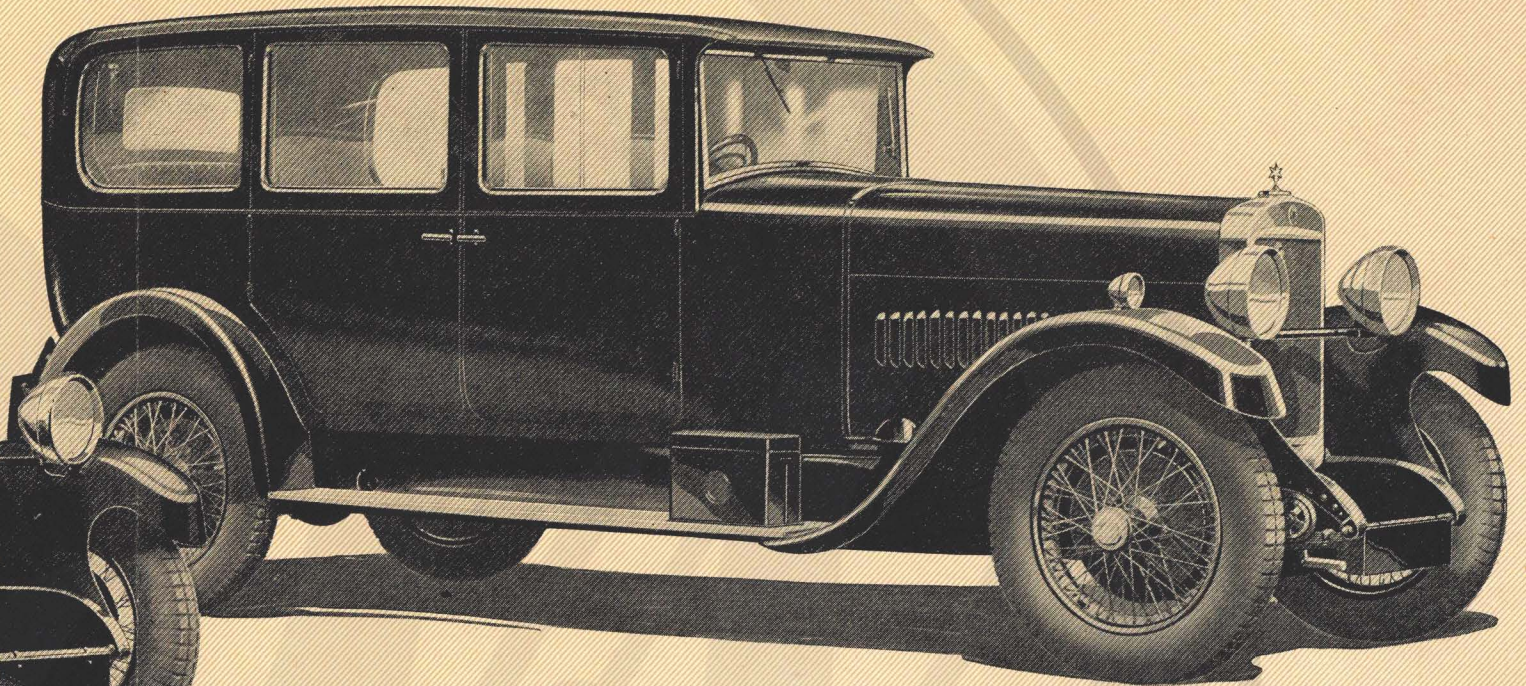
THE STAR MOTOR CO. LTD., WOLVERHAMPTON.

Associated with Guy Motors Ltd.

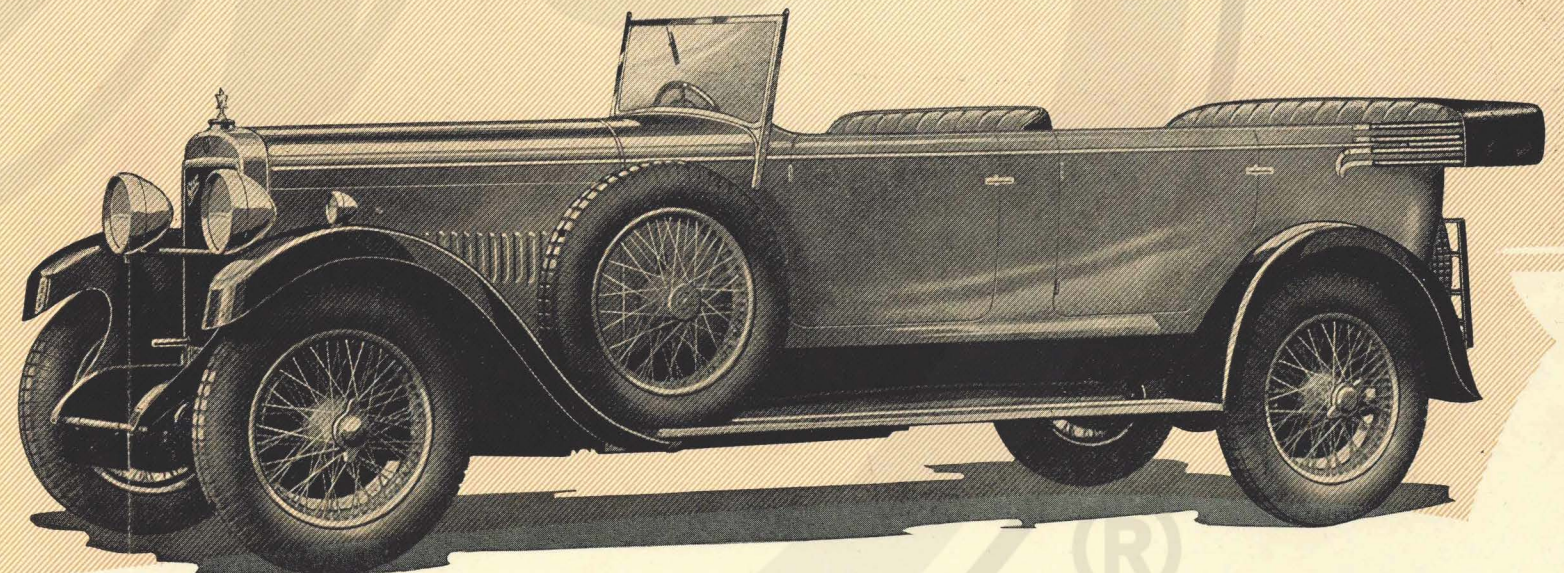
The STAR 20/60 H.P. SIX CYLINDER MODELS *for* 1930



20/60 h.p. Star "Delia" Semi-sports coachbuilt Saloon.
Price £825



20/60 h.p. Star "Norma" Saloon Limousine. Price £850



20/60 h.p. Star "Vela" five seater Tourer. Price £675

THE 20/60 "Delia" is a new STAR for 1930 which promises to command instant and favourable attention. It is a 4-door, 4-light body of bold and imposing appearance, and is provided with an extra large luggage boot at the rear. Luxurious accommodation for four persons inside. "Norma" and "Vela" cars, in common with all the 20/60 models have all the 1930 Star refinements and improvements. Colour and upholstery to choice and sliding roofs optional on all 20/60 saloons.

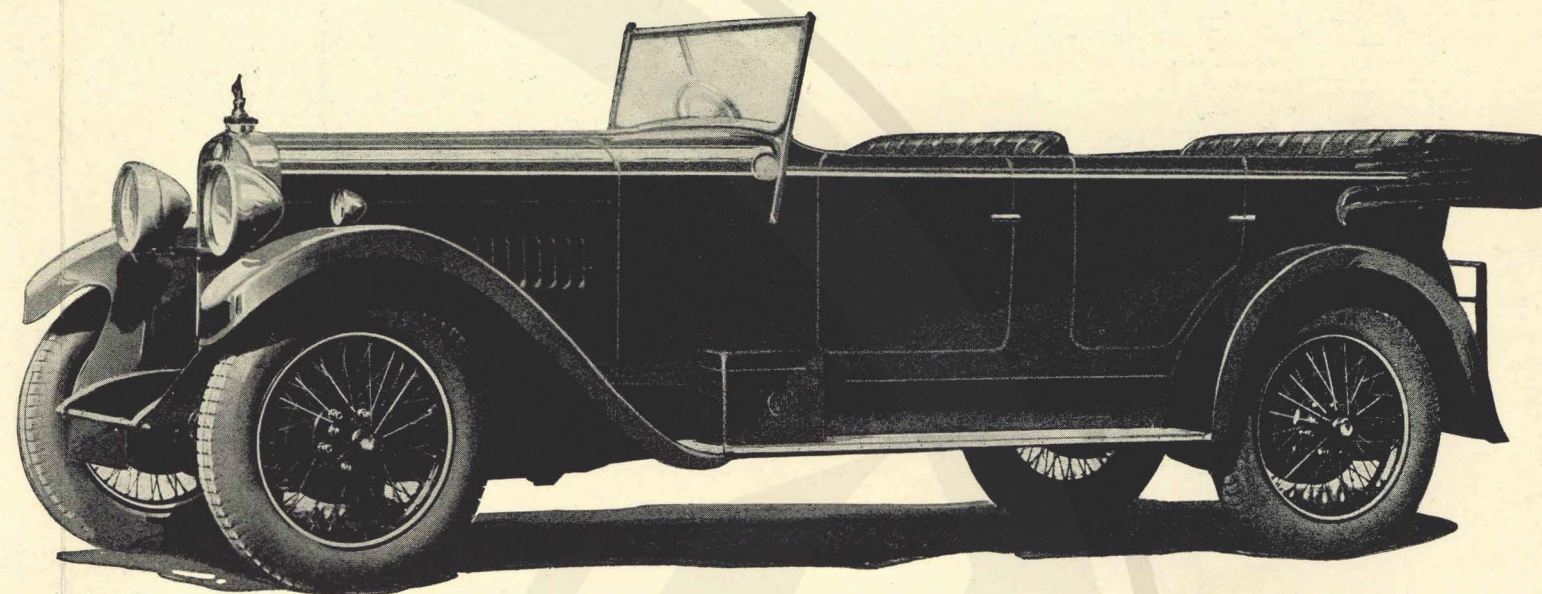
THE CAR OF THE FUTURE IS THE STAR OF TO-DAY

18-50 H.P. 6 CYLINDER STAR CARS FOR 1930

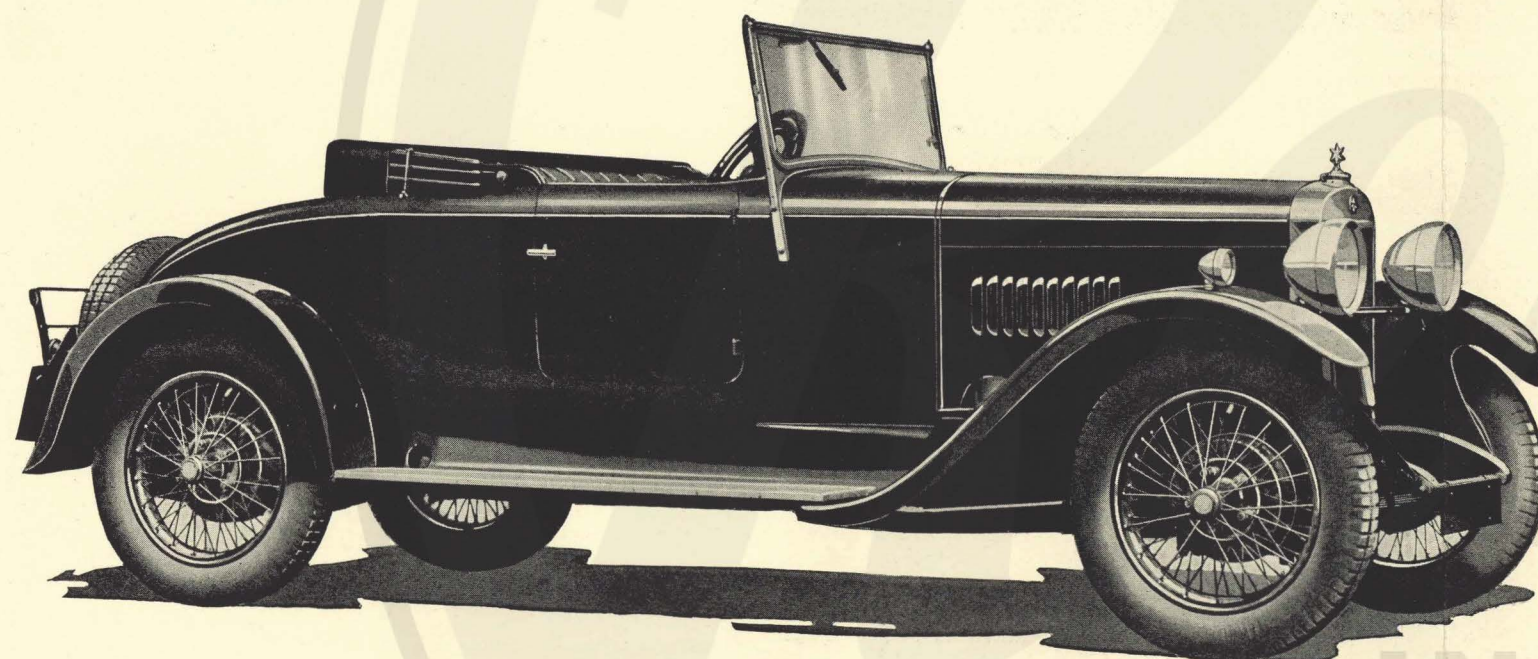
NEW FEATURES AND IMPROVEMENTS

IMPORTANT refinements have been made to both 18/50 and 20/60 6 cylinder STAR chassis in a number of mechanical features, giving appreciably improved performance all round. The improved clutch to both models gives even smoother operation than before. Braking is now planned on very simple lines, the pedal applying internal-expanding shoes, within the drums of all four wheels. A single adjuster to all four brakes is provided to which access is gained by merely lifting the bonnet. The hand lever operates a separate set of shoes in the rear drums. The Steering and controls have been still further improved and steering now is 'featherlight'.

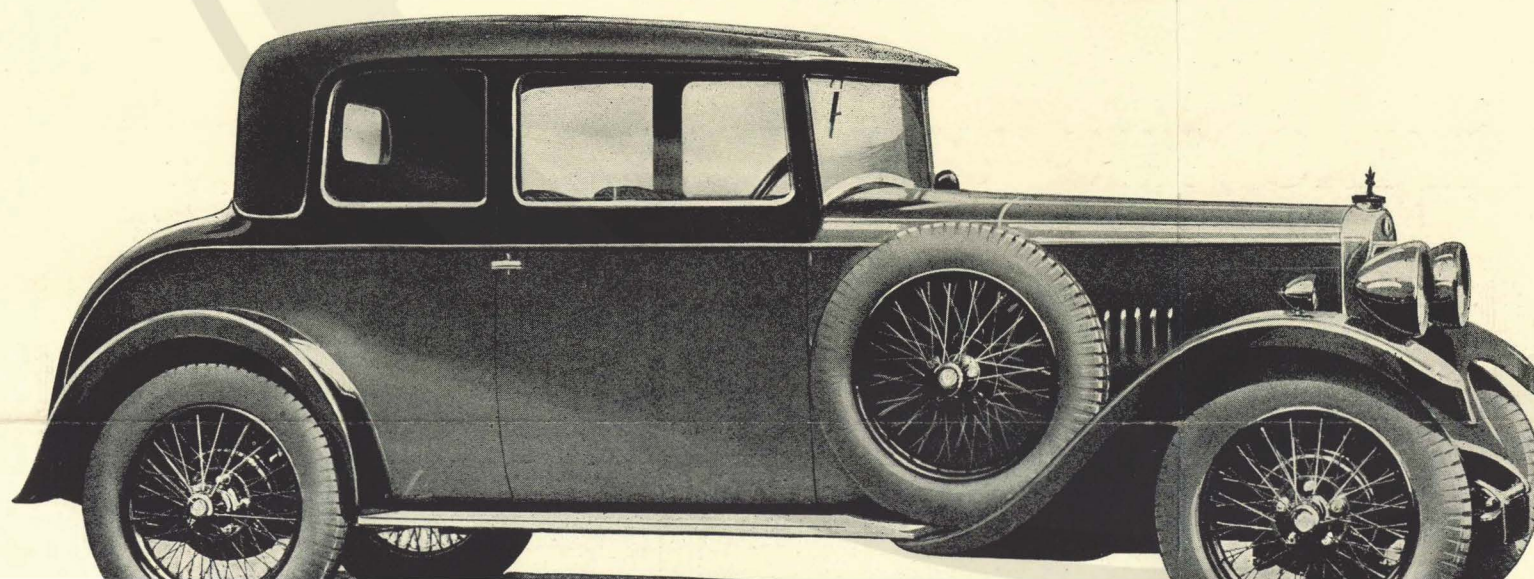
Star coachwork has considerably advanced. The entirely new radiator design of bolder and more imposing appearance has enabled a distinctive body line to be achieved which sets a new standard of enhanced appearance for all 1930 STAR models. Chromium plating and splinterless glass standardised for the whole range and sliding roofs optional on all Saloons and the 18/50 "Jason" Coupe.



18/50 h.p. Star "Eclipse" 5 seater Tourer. Price £495
An open car of commodious proportions and distinctive appearance.



18/50 h.p. Star "Cygnus". A 2 1/2 seater having an appealing grace of line, with well upholstered dickey seat for two adults. Price £495



STAR CAR PRICE LIST

The 18/50 h.p. 6-cylinder Models.

18/50 h.p. Chassis	£350
18/50 h.p. "Cygnus" 2-seater	£495
18/50 h.p. "Eclipse" 5-seater	£495
18/50 h.p. "Luna" fabric saloon	£545
18/50 h.p. "Nestor" fabric saloon	£545
18/50 h.p. "Cetus" coachbuilt saloon	£575
18/50 h.p. "Diana" 3/4-coupe	£575
18/50 h.p. "Flora" saloon coupe	£575
18/50 h.p. "Jason" coachbuilt coupe	£595

The 20/60 h.p. 6-cylinder Models.

20/60 h.p. Chassis	£550
20/60 h.p. "Sagitta" 2-seater	£655
20/60 h.p. "Vela" 5-seater	£675
20/60 h.p. "Perseus" 3/4-coupe	£750
20/60 h.p. "Antlia" saloon coupe	£750
20/60 h.p. "Libra" coachbuilt saloon	£825
20/60 h.p. "Hector" fabric saloon	£825
20/60 h.p. "Delia" coachbuilt saloon	£825
20/60 h.p. "Norma" saloon limousine	£850
20/60 h.p. "Andromeda" saloon landaulette	£850

2 or 5-Seater Touring bodies and Coupes in fabric or panel as desired.

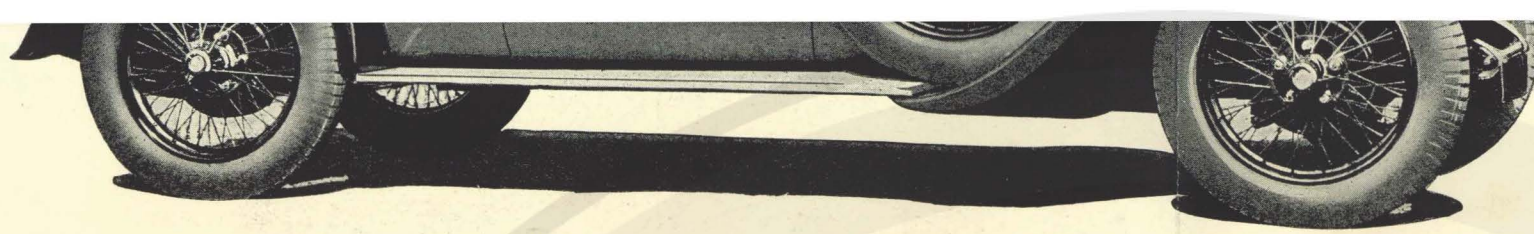
Prices include 4-Wheel Brakes, Right-hand Control, Splinterless Glass, with full equipment as specified.

Chromium Plating standard on 2/1 models.

18/50 H.P. FINISHES (except "Jason" and "Luna" models) :—

Paint and fabric colours : Brown, Blue and Maroon, with Black wings, wheels and chassis. Upholstery colours : Furniture Hides for Saloons—Brown, Blue and Plum. Enamelled Antique Leathers for Saloons and Touring Cars—Brown, Blue and Maroon.

"JASON" finish : Paint, Fabric, Upholstery—colours to choice.



New model for 1930
18/50 h.p. Star "Jason" Sportsmans coachbuilt coupe
with 2-door, 4-light body with luggage boot at rear, seating
4 persons inside. Colour and upholstery to choice.
Price £595

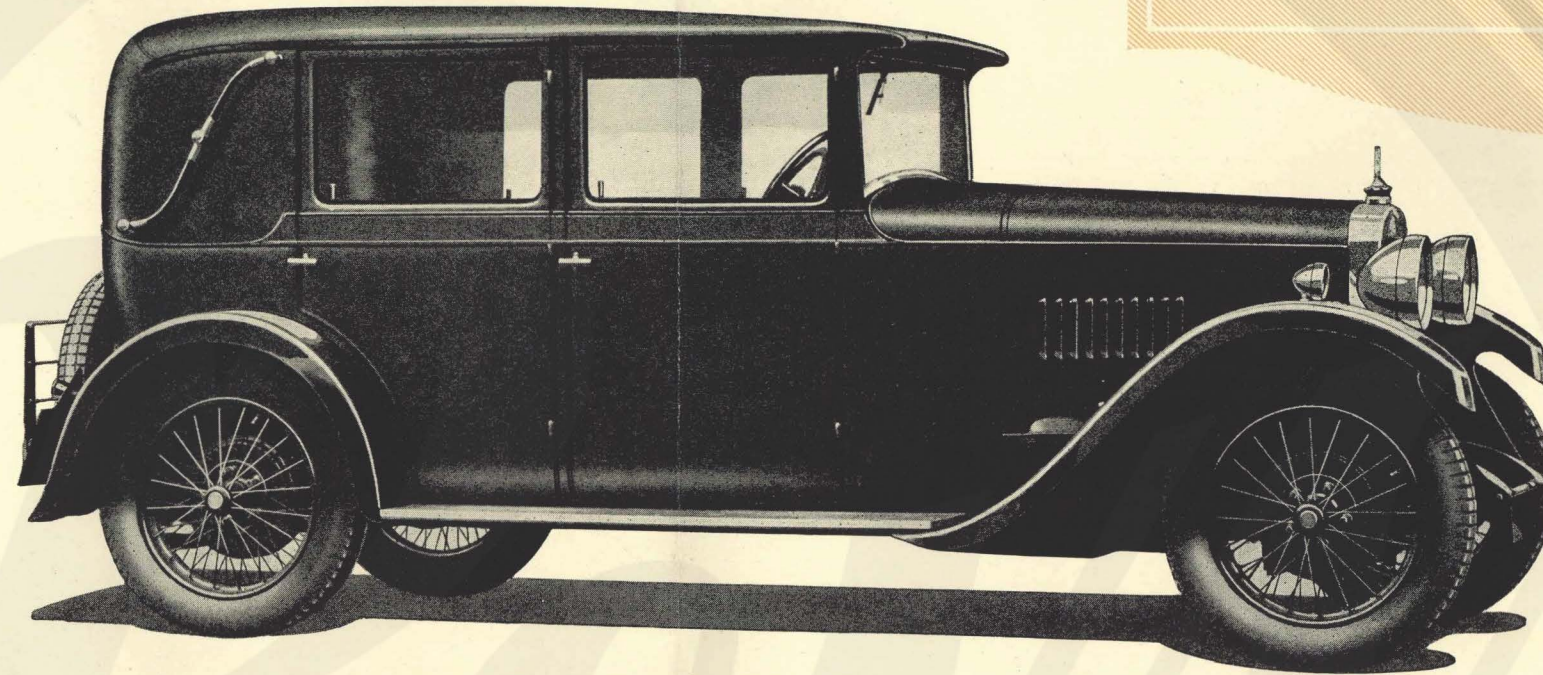
wheels and chassis. Upholstery colours: Furniture Hides for Saloons—
Brown, Blue and Plum. Enamelled Antique Leathers for Saloons and
Touring Cars—Brown, Blue and Maroon.

"JASON" finish: Paint, Fabric, Upholstery—colours to choice.

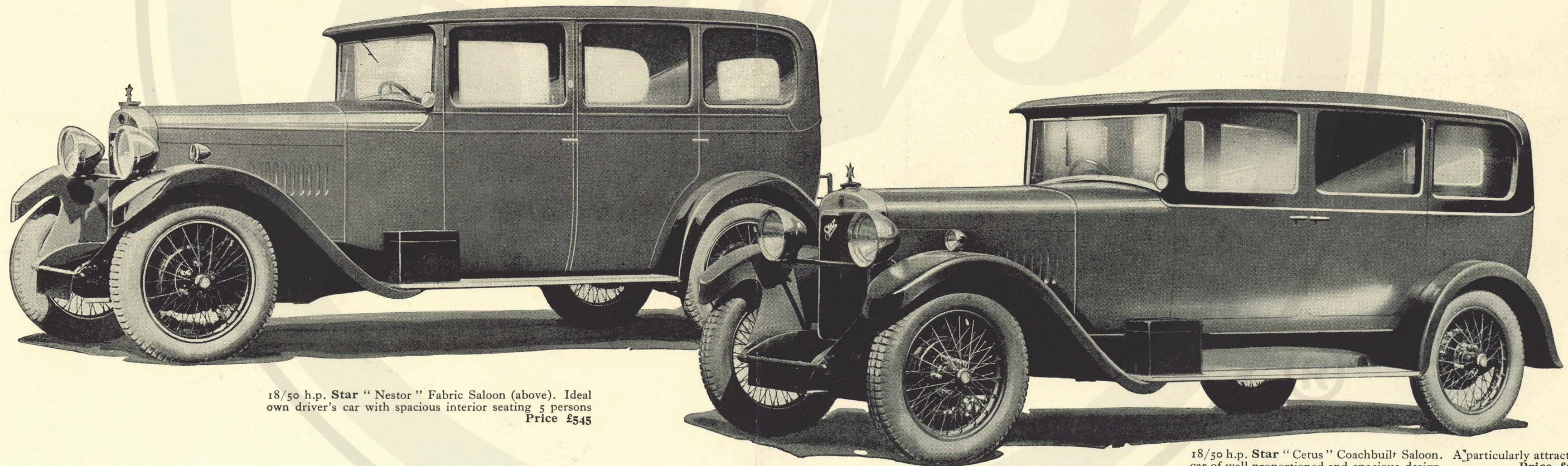
"LUNA" Model. Supplied as standard: covered black fabric, up-
holstered brown furniture hide, with cream insert panels and cream or
black wheels.

20/60 H.P. FINISHES: Paint, fabric, upholstery—colours to choice.

*All Prices and Specifications are subject to Guarantee and Terms of Business as
current Catalogue, are liable to alteration without notice, and include delivery
at Works only.*



18/50 h.p. Star "Luna" Fabric Saloon. A desirable car
for social and town use. Price £545



18/50 h.p. Star "Nestor" Fabric Saloon (above). Ideal
own driver's car with spacious interior seating 5 persons
Price £545

18/50 h.p. Star "Cetus" Coachbuilt Saloon. A particularly attractive
car of well proportioned and spacious design. Price £575

THE CAR OF THE FUTURE IS THE STAR OF TO-DAY