

# Star Cars

*1914 Models*



PRELIMINARY CATALOGUE



TELEGRAPHIC ADDRESS:

"STARGAZING."

TELEPHONE:

No 4614 GERRARD



24, 25, 26, LONG ACRE,  
LONDON, W.C.

W.G.W.

25th Nov. 1913.

# STAR MOTOR AGENCY LTD.

Representatives for London  
... and District for the ...  
Star Engineering Co., Ltd., Wolverhampton.

T. Hannam Esq.,  
Springfield.  
Gillingham. Dorset.

Dear Sir.

In going through some correspondence sent to us by the Star Engineering Co, Ltd., Wolverhampton we find an enquiry from you with regard to our cars. As the business of the Star Engineering Co, Ltd., on the South Coast is now managed from this Agency at the above address we shall be glad to know whether there are any further particulars we can give you, in fact we may be in a position to give you a trial run on our 12/15 h.p. or 15.9. car if you would let us know when it would be convenient.

We are in the position to fit a self starter but if you will give us an idea of the particular one you prefer we will go into the matter again.

Yours faithfully,

THE STAR MOTOR AGENCY LTD.

General Manager.

# STAR CARS

## Preliminary Catalogue of

# 1914

## MODELS.



Telegrams: "MOTOR," WOLVERHAMPTON.

Telephone: 995 Wolverhampton.

# THE STAR ENGINEERING CO., LTD.

FREDERICK STREET,

WOLVERHAMPTON, ENGLAND.

London Depot and Showrooms:

Telephone: 4614 Gerrard.

Telegrams: "STARGAZING," LONDON.

THE STAR MOTOR AGENCY, LTD.,

24, 25 &amp; 26, Long Acre, W.C.



## STAR POLICY.


NOVEMBER, 1913.

**All previous lists cancelled.**

**We reserve the right to alter any part of this list, or revise our prices without notice.**

**All designs, weights, measurements, etc., must be taken as approximate.**

**Illustrations are given as a general guide, and are not binding in detail.**

N INTRODUCING our 1914 Models to you we are very much alive to the fact that Motorists are becoming more and more fastidious in their demands, and much more educated in the "what's what" in Motor Cars.

We have specially laid ourselves out this year to please the most fastidious and exacting of buyers, by introducing special refinements in design, accessibility and silence being the main object in view. Speed and the hill-climbing abilities of "STARS" have been sufficiently demonstrated on the road and track and are so well known to the Motoring World, that it is unnecessary to dwell on what is already an accomplished fact.

We have followed public taste in body work by the fitting of Streamline Bodies of the most pleasing lines, and the equipment of the Car is absolutely complete, ready for the road; a dynamo lighting set being fitted to all models except the 10/12 h.p.

In conclusion, we have the right car at a moderate price, "ALL BRITISH" AND SECOND TO NONE.

**THE STAR ENGINEERING CO., LTD.**



## TERMS OF BUSINESS.

¶ "STAR" CARS are sold on the condition that they are not exhibited at any show or exhibition in the United Kingdom, unless our permission is first obtained in writing.

Prices quoted in this catalogue are **net cash**, and subject to alteration without notice.

Delivery is made either at our works, in running order, or F.O.R., Wolverhampton. **10%** cash must accompany the order, and balance on intimation that the car is ready for delivery.

For export orders our cars are cased; the packing and cases are charged at the net cost price and are not returnable.

We always endeavour to deliver on the date promised; at the same time—in case of delay—we cannot be held responsible for any damages whatsoever. The purchaser has the right to cancel the order and demand the return of deposit if date of delivery is exceeded by two months, but shall have no claim for damages or loss of profit.

On receiving goods customers should carefully inspect, and if damaged make an immediate claim on the carriers of the same, as these are signed for as being received in good condition by the railways or shipping companies. The latter become the agent for the purchaser; the purchaser pays all carriage charges, etc.

Cheques and Post Office Orders should be made payable to "STAR ENGINEERING Co., LTD.," and crossed & Co.

¶ Customers requiring the use of any of our drivers or officials to drive, instruct in driving, or to handle their car for any purpose whatever, either in taking delivery of a new car, or making adjustments or repairs to customer's cars, must accept full responsibility and take all risks, either for damage to third party, to property, or to the car in use.

All repairs or alterations must be paid for when completed, and before the car or part, as the case may be, is returned to the owner.

¶ The term "agent" is used in a complimentary sense only, and those firms whom we style "our agents" are not authorised to advertise, incur any debts, or transact any business whatsoever on our account other than the sale of goods which they may purchase from us, nor are they authorised to give any warranty or make any representation on our behalf, other than those contained in the guarantee.

## GUARANTEE.

¶ WE GIVE THE FOLLOWING GUARANTEE with our cars, instead of the guarantee implied by statute, or otherwise, as to the quality or fitness for the purpose of motoring of goods supplied by us, any such implied guarantee being in all cases excluded. In the case of cars which have been used for "hiring out" purposes, no guarantee of any kind is given or is to be implied.

We guarantee, subject to the conditions mentioned below, that all precautions which are usual and reasonable have been taken by us to secure excellence of material and workmanship, but this guarantee is to extend and be in force for six months only from the date of purchase. We undertake, subject to the conditions mentioned below, to make good at any time within six months any defects in these respects of our cars. This guarantee does not apply to defects caused by wear and tear, misuse, or neglect.

### CONDITIONS OF GUARANTEE.

If a defective part should be found in any of our cars, it must be sent to us, carriage paid, and accompanied by an intimation from the sender that he desires to have it repaired free of charge under our guarantee, and he must also furnish us at the same time with the number of the car and the date of purchase.

Failing compliance with the above, no notice will be taken of anything which may arrive, but such articles will lie here at the risk of the senders; and this guarantee, and any implied guarantee, shall not be enforceable.

We guarantee only those cars which are bought either direct from us or from one of our duly authorised agents, and under no other conditions.

We do not guarantee the specialities of other firms, such as tyres, chains, lamps, magnetos, or electrical appliances, supplied with our cars or otherwise. We endeavour to secure the highest quality of these articles, and the makers, whose names usually appear thereon, are—in nearly every case—willing to replace any defective part; and we will at all times furnish the maker's name as a proof of the quality.

### WHAT CONSTITUTES A "STAR" CHASSIS.

A "STAR" CHASSIS is the entire mechanical portion of a motor car, less body, back wings, and step boards. Petrol tank is included, also tools, tyre pump, repair outfit, petrol funnel, oilcan, hub cap spanner, valve cap spanner, spare plug and washer, and parcel of spare bolts, nuts, etc. The finish is in lead colour. Radiator, standard finish brass, plating being an extra charge. The gear levers are left for finishing by the coachbuilders, in either brass or nickel as desired.



# DIMENSIONS.

H.P.	CYLINDERS.	BORE AND STROKE.	H.P. BY R.A.C. RATING.	ENGINE CAPACITY. C. C.	NUMBER OF SPEEDS.	FINAL DRIVE.	WEIGHT CHASSIS.
10—12	4	80 × 120	15·9	2409	3	BEVEL	CWTS. QRS. 12 2
12—15	4	80 × 120	15·9	2409	4	BEVEL	16 2
15·9	4	80 × 150	15·9	3012	4	BEVEL	18 3
20·1	4	90 × 150	20·1	3816	4	BEVEL	18 3

H.P.	IGNITION.	WHEEL BASE.	TRACK.	OVERALL LENGTHS.	BODY SPACE	TYRES, DUNLOPS	TAX.
10—12	BOSCH MAG.	8 FT. 4½ INS.	4 FT. 3 INS.	11 FT. 7 INS.	FT.INS. FT.INS. 6 7½ × 2 7½	810 × 90	£4 4 0
12—15	BOSCH MAG.	10 FT. 0 INS.	4 FT. 5½ INS.	13 FT. 6 INS.	7 9 × 2 10	810 × 100	£4 4 0
15·9	VAR. MAG.	10 FT. 3½ INS.	4 FT. 9 INS.	14 FT. 4½ INS.	7 9 × 2 10	815 × 105	£4 4 0
20·1	DUAL MAG	10 FT. 3½ INS	4 FT. 9 INS.	14 FT. 4½ INS.	7 9 × 2 10	820 × 120	£6 6 0

Chassis of Landaulettes and Limousines are six inches longer than above, and price is £10 over standard.

# :: STAR :: PRICES for 1914 MODELS.

HORSE POWER.	BODY.	PRICE.	PRICE WITH COMPLETE EQUIPMENT.
10—12	Chassis ... ..	£230	
„	Standard 4-Seater body ...	£280	300 GUINEAS.
„	Standard 2-Seater body ...	£270	290 GUINEAS.
„	Coupé ... ..	£340	350 GUINEAS.
12—15	Chassis ... ..	£265	
„	5-Seater Streamline body ...	£320	350 GUINEAS.
„	2-Seater Streamline body ...	£310	340 GUINEAS.
„	2-Seater Streamline Victoria...	£323	350 GUINEAS.
„	Coupé ... ..	£385	410 GUINEAS.
„	Single Landaulette ... ..	£410	435 GUINEAS.
„	Cabriolet ... ..	£430	455 GUINEAS.
15·9	Chassis ... ..	£300	
„	5-Seater Streamline body ...	£365	400 GUINEAS.
„	2-Seater Streamline body ...	£350	385 GUINEAS.
„	2-Seater Streamline Victoria...	£363	400 GUINEAS.
„	Coupé ... ..	£420	445 GUINEAS.
„	Single Landaulette ... ..	£445	470 GUINEAS.
„	Cabriolet ... ..	£465	490 GUINEAS.
„	Double or ¾ Landaulette ...	£465	490 GUINEAS.
20·1	Chassis ... ..	£350	
„	5-Seater Streamline body ...	£425	460 GUINEAS.
„	Single Landaulette ... ..	£495	520 GUINEAS.
„	Cabriolet ... ..	£515	540 GUINEAS.
„	Double or ¾ Landaulette ...	£510	535 GUINEAS.

## EQUIPMENT . . .

includes Cape Cart Hood, Single Wind Screen and Dynamo Lighting Set (5 Lamps), 5 Detachable Wheels and Steel Studded Tyre to spare wheel, and Speedometer.

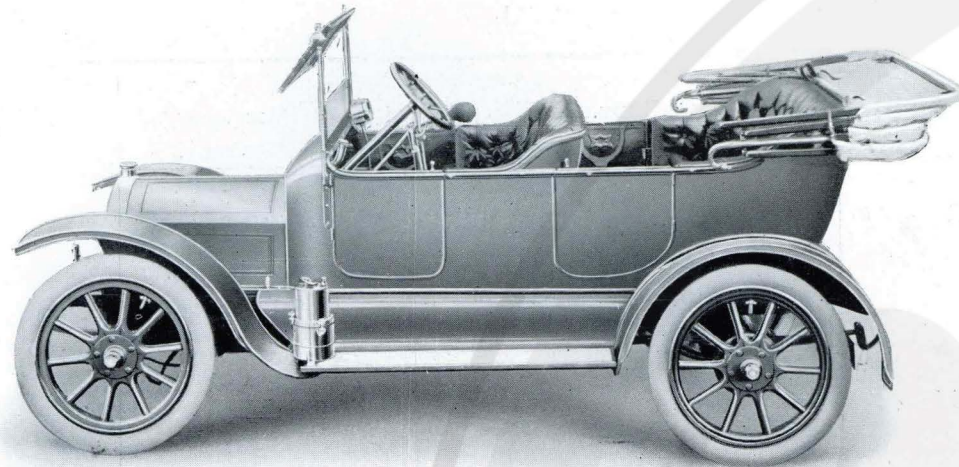
Equipment on closed cars means the addition of Dynamo Lighting Set.

Acetylene Head and Oil Side and Tail Lamps to 10—12 h.p. Model only.

Leather Hood to Victoria Car, £5 extra.



# 10-12 H.P. STAR CAR.



## Standard Specification.

ENGINE. - - Four cylinders, cast *en bloc*. Bore, 80 mm. Stroke, 120 mm.

IGNITION. - - Magneto, Bosch or Simms.

LUBRICATION is of the forced feed type through drilled crankshaft. (Sternol recommended).

COOLING. - - Thermo-syphon.

CARBURETTER. Automatic.

CLUTCH is a leather-faced cone type, engaging in the fly-wheel and specially designed; free from end thrust.

CHANGE SPEED GEAR. Three speeds forward and one reverse are provided with gate change; direct drive on top speed, all being operated by one lever. Gearshafts are mounted on ball bearings. An inspection plate of large size is provided for the examination of gears and the suppling of grease.

FRONT AXLE is particularly well designed, strong in construction, ball bearings being fitted, ball thrust bearings are also provided. The small driving bevel and the large bevel are machined from steel stampings. The differential is of bevel type, having four small pinions mounted on a four-pin centre. The differential is enclosed in a separate casing inside the axle box, all running in oil. The weight of the car is not carried on the axle-shaft, being carried on the axle casing and on ball bearings.

FRONT AXLE is H section, steel stamped, specially strong in section, and is designed to allow for a good lock, enabling the car to turn round in a very small space. It is fitted with ball bearing steering head and substantial steering joints.

FRAME is pressed steel, deep section, inswept at front.

SPRINGS. - - Front, semi-elliptic; rear, three-quarter elliptic.

STEERING. - - Worm and wheel type, exceptionally strong, made adjustable to take up all wear, cased in a strong box, well lubricated, worm and wheel being case hardened.

WHEELS. - - Artillery pattern, strong in construction, made of the best seasoned wood, and are mounted on ball-bearings.

TYRES. - - Size, 810 x 90 mm.; Dunlop; plain.

CONTROL of the engine is by a throttle lever fitted on the centre of the steering wheel, and also a foot accelerator, either of which independently accelerates the engine. The hand lever can be set in any position for the running of the engine at the desired speed.

BRAKES. - - Very powerful foot brake, external grip. Two powerful internal expanding brakes to the road wheels.

This Specification is Subject to Alterations and Improvements Without Notice.

PRICE of 10—12 h.p. Chassis complete with Tyres and Front Mudguards, including 5 detachable Wheels ... ..

„ fitted with 4-Seater body ... ..

„ complete with Cape Cart Hood, Wind Screen, and 5 Lamps... ..

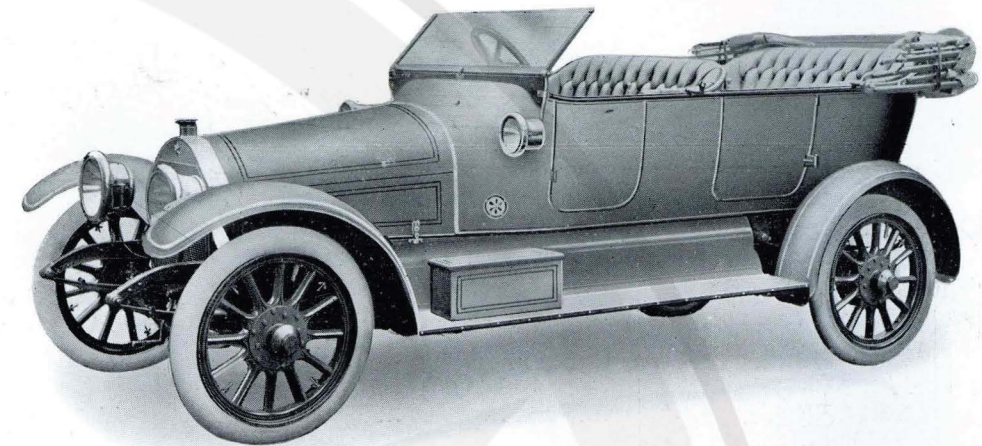
„ Nickel Finish ... .. extra

	CODE.
£230 0 0 ...	Starbies.
£280 0 0 ...	Starbst.
290 GUINEAS. ...	Starkley.
£2 10 0 ...	Starchily.

THE STAR ENGINEERING CO., LTD.

WOLVERHAMPTON, England.

# 12-15 H.P. STAR CAR.



## Standard Specification.

ENGINE. - - Four cylinders, cast *en bloc*. Bore, 80 mm. x 120 mm. stroke. Valves entirely enclosed, operated by one camshaft. Camshaft and magneto driven by silent chains.

IGNITION - - H.T. magneto, Bosch.

LUBRICATION is of the forced feed type through drilled crankshaft.

COOLING. - - Honeycomb radiator is fitted, and has belt-driven fan to induce draught, and a centrifugal pump is fitted.

CARBURETTER. Zenith. Petrol is fed by pressure, supplied by an air pump.

CLUTCH is a leather-faced cone type engaging in the flywheel, and specially designed.

CHANGE SPEED GEAR. Four speeds forward and one reverse are provided, with gate change; direct drive on top speed.

BACK AXLE is particularly well designed, strong in construction, ball bearings being fitted; ball thrust bearings are also provided. The differential is of bevel type, having four small pinions mounted on a four pin centre. The differential is enclosed in a separate casing inside the axle box, all running in oil. The weight of the car is carried on the tubes extending from the axle box, two ball bearings being fitted to each end of same, on which the hubs are mounted, no weight being carried on the driving-shafts, they being connected to the hubs for the purpose of drive only.

FRONT AXLE is H section, steel stamped, specially strong in section, and is designed to allow for a good lock, enabling the car to turn round in a very small space. It is fitted with ball bearing steering head and substantial steering joints.

FRAME is pressed steel, deep section.

SPRINGS. - - Front, semi-elliptic; rear, three-quarter elliptic.

STEERING - - Worm and wheel type, exceptionally strong, made adjustable to take up all wear, cased in a strong box, worm and wheel being case-hardened.

WHEELS. - - Five detachable, artillery pattern, strong in construction, made of best seasoned wood, and are mounted on ball bearings.

TYRES. - - Size, 810 x 100 mm.; Dunlop; plain; heavy.

CONTROL of the engine is by a throttle lever fitted on the centre of the steering wheel; and also a foot accelerator, either of which independently accelerates the engine. The hand lever can be set in any position for the running of the engine at the desired speed.

BRAKES. - - Very powerful foot brake, external grip. Two powerful internal expanding brakes are fitted to the road wheels.

This Specification is Subject to Alterations and Improvements Without Notice.

PRICE of 12—15 h.p. Chassis complete with Tyres and Front Mudguards, including 5 detachable Wood Wheels... ..

„ fitted with 5-Seater body ... ..

„ complete with Cape Cart Hood, Screen and Dynamo Lighting Set

„ Nickel Finish ... .. extra

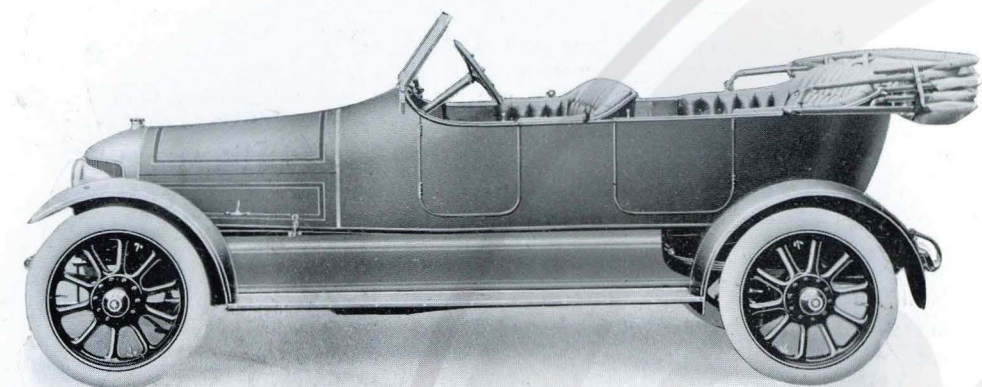
	CODE.
£265 0 0 ...	Starocao.
£320 0 0 ...	Starred.
350 GUINEAS. ...	Starrhals.
£2 10 0 ...	Starchily

THE STAR ENGINEERING CO., LTD.

WOLVERHAMPTON, England.



15·9 H.P. STAR CAR.



Standard Specification.

**ENGINE.** - - Four cylinders, cast in pairs. Bore, 80 × 150 mm. stroke. Valves entirely enclosed, operated by one camshaft. Camshaft and magneto driven by silent chains.

**IGNITION.** - - Bosch H.T. magneto, variable.

**LUBRICATION** is of the forced feed type through drilled crankshaft.

**COOLING.** - - Honeycomb radiator is fitted, and has belt-driven fan to induce draught. A centrifugal pump is fitted, driven by a silent chain off camshaft, entirely enclosed in crank chamber.

**CARBURETTER.** Zenith. Petrol is fed by pressure supplied by an air pump.

**CLUTCH** is a leather-faced cone type engaging in the flywheel, and entirely enclosed.

**CHANGE SPEED GEAR.** Four speeds forward and reverse are provided, with gate change, direct drive on top speed.

**BACK AXLE** is particularly well designed, strong in construction, bevel drive, ball bearings throughout. The differential is enclosed in a separate casing inside the axle box, all running in oil. The weight of the car is carried on the tubes extending from the axle box, two ball bearings being fitted to each end of same, on which the hubs are mounted, no weight being carried on the driving-shafts, they being connected to the hubs for the purpose of drive only.

**FRONT AXLE** is H section steel stamped, specially strong in section, and is designed to allow for a good lock, enabling the car to turn round in a very small space. It is fitted with ball bearing steering head and substantial steering joints.

**FRAME** is of pressed steel. The engine is carried on an under frame.

**SPRINGS.** - - Front, semi-elliptic; rear, three-quarter elliptic.

**STEERING.** - - Worm and wheel type, exceptionally strong, is made adjustable, cased in strong box, worm and wheel being case-hardened.

**WHEELS.** - - Five detachable, artillery pattern, made of best seasoned wood, and are mounted on ball bearings.

**TYRES.** - - Size, 815 × 105 mm.; Dunlop; plain; heavy.

**CONTROL** of the engine is by a throttle lever fitted on the centre of the steering wheel, and also a foot accelerator, either of which independently accelerates the engine. The hand lever can be set in any position for the running of the engine at the desired speed.

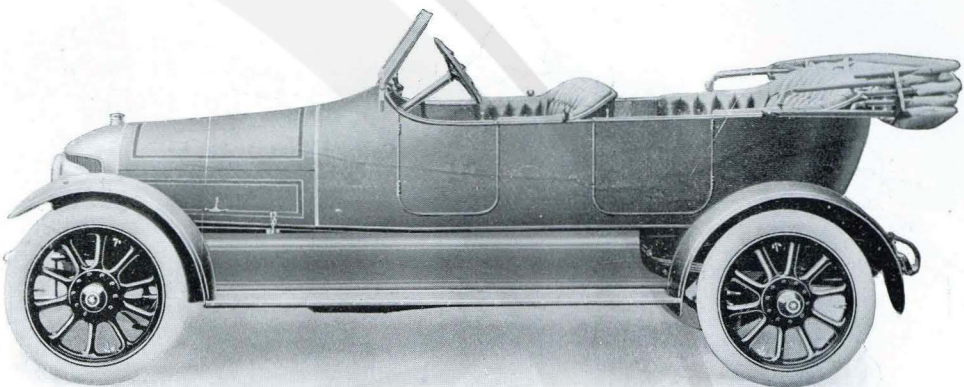
**BRAKES.** - - Very powerful foot brake, external grip, easily adjusted; whilst two powerful internal expanding brakes are fitted to the road wheels.

This Specification is Subject to Alterations and Improvements Without Notice.

PRICE of 15·9 h.p. Chassis complete with Tyres and Front Mudguards, including 5 Star detachable Wood Wheels ...				CODE.
...	£300	0	0	Starklight.
„ with 5-Seater Torpedo body ...	£365	0	0	Starkgeist.
„ complete with Cape Cart Hood, Wind Screen, and Dynamo Lighting Set ...	400	GUINEAS.	...	Starkmuth.
„ Nickel Finish ...	£2	10	0	Starchily.

THE STAR ENGINEERING CO., LTD. - WOLVERHAMPTON, England.

20·1 H.P. STAR CAR.



Standard Specification.

**ENGINE.** - - Four cylinders, cast in pairs. Bore, 90 × 150 mm. stroke. Valves entirely enclosed, operated by one camshaft. Camshaft and magneto drive by silent chains.

**IGNITION.** - - Bosch dual H.T. magneto.

**LUBRICATION** is of the forced feed type through drilled crankshaft.

**COOLING.** - - Honeycomb radiator is fitted, and has belt-driven fan to induce draught. A centrifugal pump is fitted, driven by a silent chain off camshaft, entirely enclosed in crank chamber.

**CARBURETTER.** Zenith. Petrol is fed by pressure supplied by an air pump.

**CLUTCH** is a leather-faced cone type engaging in the flywheel, and entirely enclosed.

**CHANGE SPEED GEAR.** Four speeds forward and reverse are provided, with gate change, direct drive on top speed.

**BACK AXLE** is particularly well designed, strong in construction, bevel drive, ball bearings throughout. The differential is enclosed in a separate casing inside the axle box, all running in oil. The weight of the car is carried on the tubes extending from the axle box, two ball bearings being fitted to each end of same, on which the hubs are mounted, no weight being carried on the driving-shafts, they being connected to the hubs for the purpose of drive only.

**FRONT AXLE** is H section steel stamped, specially strong in section, and is designed to allow for a good lock, enabling the car to turn round in a very small space. It is fitted with ball bearing steering head and substantial steering joints.

**FRAME** is pressed steel, deep section. The engine is carried on an underframe.

**SPRINGS.** - - Front, semi-elliptic; rear, three-quarter elliptic.

**STEERING.** - - Worm and wheel type, exceptionally strong, is made adjustable, cased in strong box, worm and wheel being case-hardened.

**WHEELS.** - - Five detachable, artillery pattern, made of best seasoned wood, and are mounted on ball bearings.

**TYRES.** - - Size, 820 × 120 mm. Dunlop; plain; heavy.

**CONTROL** of the engine is by a throttle lever fitted on the centre of the steering wheel, and also a foot accelerator, either of which independently accelerates the engine. The hand lever can be set in any position for the running of the engine at the desired speed.

**BRAKES.** - - Very powerful foot brake, external grip, easily adjusted; whilst two powerful internal expanding brakes are fitted to the road wheels.

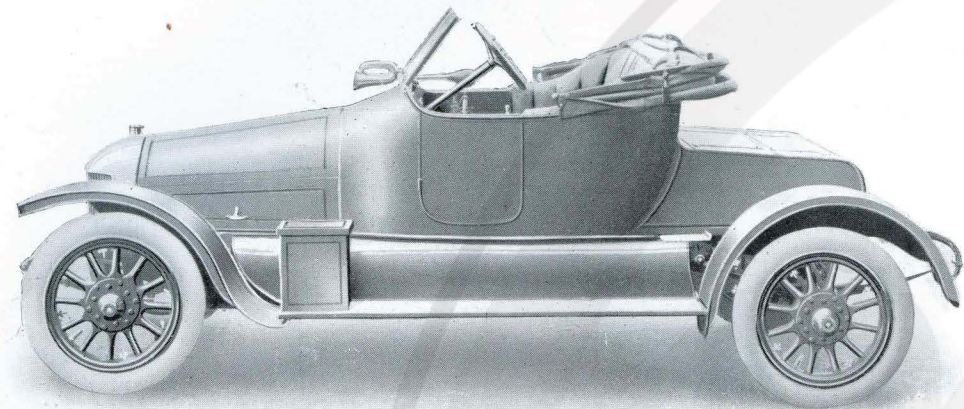
This Specification is Subject to Alterations and Improvements Without Notice.

PRICE of 20·1 h.p. Chassis complete with Tyres and Front Mudguards, including 5 detachable Wood Wheels ...				CODE.
...	£350	0	0	Starnado.
„ complete with 5-Seater body ...	£425	0	0	Starnassi.
„ complete with Cape Cart Hood, Wind Screen, and Dynamo Lighting Set ...	460	GUINEAS.	...	Starnuta.
„ Nickel Finish ...	£2	10	0	Starchily.

THE STAR ENGINEERING CO., LTD. - WOLVERHAMPTON, England.



:: STAR ::  
 ALL-WEATHER CARS.



p.	Victoria Car	...	...	£323	0	0	...	<i>Starian.</i>
s.	With full equipment	...	...	350	GUINEAS.	...	...	<i>Starasso.</i>
	Victoria Car	...	...	£363	0	0	...	<i>Starman.</i>
	With full equipment	...	...	400	GUINEAS.	...	...	<i>Startilia.</i>

Price of 12--15 h.p. Cabriolet, with full equipment	...	...	455 GUINEAS.	...	Starberg.
„ 15·9 „ „ „ „ „	...	...	490 „	...	Starlak.
„ 20·1 „ „ „ „ „	...	...	540 „	...	Starworp.



# **:: PRICE LIST OF ::** **SUPPLEMENTARY FITTINGS.**

	£	s.	d.
Dickey Seat - - - - -	7	7	0
Sliding Luggage Grid at back - - - - -	4	4	0
Holland Covers for interior upholstery, limousine or landaulette - - - - -	3	10	0
Waterproof Twill Covers for rear portion of open cars, all sizes - - - - -	3	10	0
"    "    "    upholstery of all seats - - - - -	5	0	0
Cape Cart Hood Bag - - - - -	2	0	0
"    "    "    Side Curtains - - - - -	3	0	0
Crests on side doors - - - - -	1	1	0
Extra for Detachable Tonneau for side-entrance bodies - - - - -	5	0	0
"    Box, with rubber-covered top, to take the place of detachable seats - - - - -	5	0	0
"    Dual Ignition where not fitted (except 10 h.p. cars) - - - - -	12	10	0
"    Leather Shields between chassis frame and side platforms - - - - -	3	0	0
Head Lamp Brackets, painted - - - - - per pair	1	0	0
"    "    plated - - - - - "	1	10	0
"    "    brass - - - - - "	2	0	0
Identification Plates, painted - - - - -	7	6	
Large Toolbox, painted and lined to match car, mounted on stepboards - - - - -	2	10	0
Luggage Rail on box at the back of two-seated bodies, brass or nickel - - - - -	2	10	0
Extra for Painting other than standard colours - - - - -	5	0	0
Fitting Speedometer, shaft or wheel drive (any make at makers' prices supplied) - - - - -	15	0	
Extra for "German Silver" Radiator for silver-finished cars - - - - -	2	10	0
Sankey or Goodyear Steel Wheels - - - - -	5	0	0
"Star" Detachable Wire Wheels - - - - -	10	0	0

## **STANDARD EQUIPMENT** when taken separately or split up in any way :—

Cape Cart Hood - - - - -	15	15	0
Single Glass Wind Screen - - - - -	6	6	6
Dynamo Lighting Set - - - - -	28	0	0
Fitting ditto - - - - -	5	0	0
Steel Studded Tyre to Spare Wheel - - - - -	Maker's price extra.		
Speedometer - - - - -	5	5	0
Fitting ditto - - - - -	15	0	

# **EXPORT AND SHIPPING** **INFORMATION.**

MODELS.	APPROXIMATE DIMENSIONS OF PACKING CASE.			APPROXIMATE GROSS WEIGHT.			COST OF CASE AND PACKING.
	LENGTH.	BREADTH.	HEIGHT.	T.	C.	Q.	
Chassis 10—12 H.P. -	12 FT. 0 INS.	× 5 FT. 2 INS.	× 3 FT. 11 INS.	1	1	2	£5 0 0
2 Seater " " -	12 FT. 0 INS.	× 5 FT. 4 INS.	× 4 FT. 11 INS.	1	5	0	£6 0 0
4 Seater " " -	12 FT. 0 INS.	× 5 FT. 4 INS.	× 4 FT. 11 INS.	1	6	2	£6 0 0
Chassis 12—15 H.P. -	14 FT. 6 INS.	× 6 FT. 3 INS.	× 3 FT. 11 INS.	1	10	0	£5 10 0
2 Seater " " -	14 FT. 9 INS.	× 6 FT. 3 INS.	× 5 FT. 3 INS.	1	14	0	£7 0 0
4 Seater " " -	14 FT. 9 INS.	× 6 FT. 3 INS.	× 5 FT. 3 INS.	1	16	0	£7 0 0
Chassis 15·9 H.P. -	15 FT. 0 INS.	× 6 FT. 3 INS.	× 4 FT. 1 IN.	1	13	0	£5 10 0
2 Seater " " -	15 FT. 0 INS.	× 6 FT. 3 INS.	× 5 FT. 5 INS.	2	1	0	£7 0 0
4 Seater " " -	15 FT. 0 INS.	× 6 FT. 3 INS.	× 5 FT. 5 INS.	2	3	0	£7 0 0
Chassis 20·1 H.P. -	15 FT. 0 INS.	× 6 FT. 3 INS.	× 4 FT. 0 INS.	1	14	0	£6 10 0
2 Seater " " -	15 FT. 0 INS.	× 6 FT. 3 INS.	× 5 FT. 5 INS.	2	2	0	£8 0 0
4 Seater " " -	15 FT. 0 INS.	× 6 FT. 3 INS.	× 5 FT. 5 INS.	2	4	0	£8 0 0
Special Sizes for Landaulettes and Limousines.							

¶ All prices in our catalogue are F.O.R., WOLVERHAMPTON; and F.O.B. charges to any English port can be quoted. F.O.B. charges in all instances are actually out-of-pocket expenses to us and no further charge is made.

Terms are 10% cash with order and the balance against Bills of Lading in London.

Cooling System. Large radiators giving ample cooling surface are fitted to all our Colonial models free of charge.

Ground Clearance. Ample ground clearance is given all models.

Bodies are built up with steel panels entirely, making them particularly suitable for Tropical climates and to withstand great variations in temperature.



## **Star Commercial Vehicles.**

A SEPARATE ILLUSTRATED CATALOGUE WILL  
BE SENT POST FREE ON APPLICATION OF  
LIGHT DELIVERY VANS, LORRIES,  
CHAR-A-BANCS, : WAGGONETTES,  
SHOOTING BRAKES : : AND  
HEAVY INDUSTRIAL VEHICLES.

---

**To carry loads 5 Cwt. to 4 Tons.**

INSTITUTE

