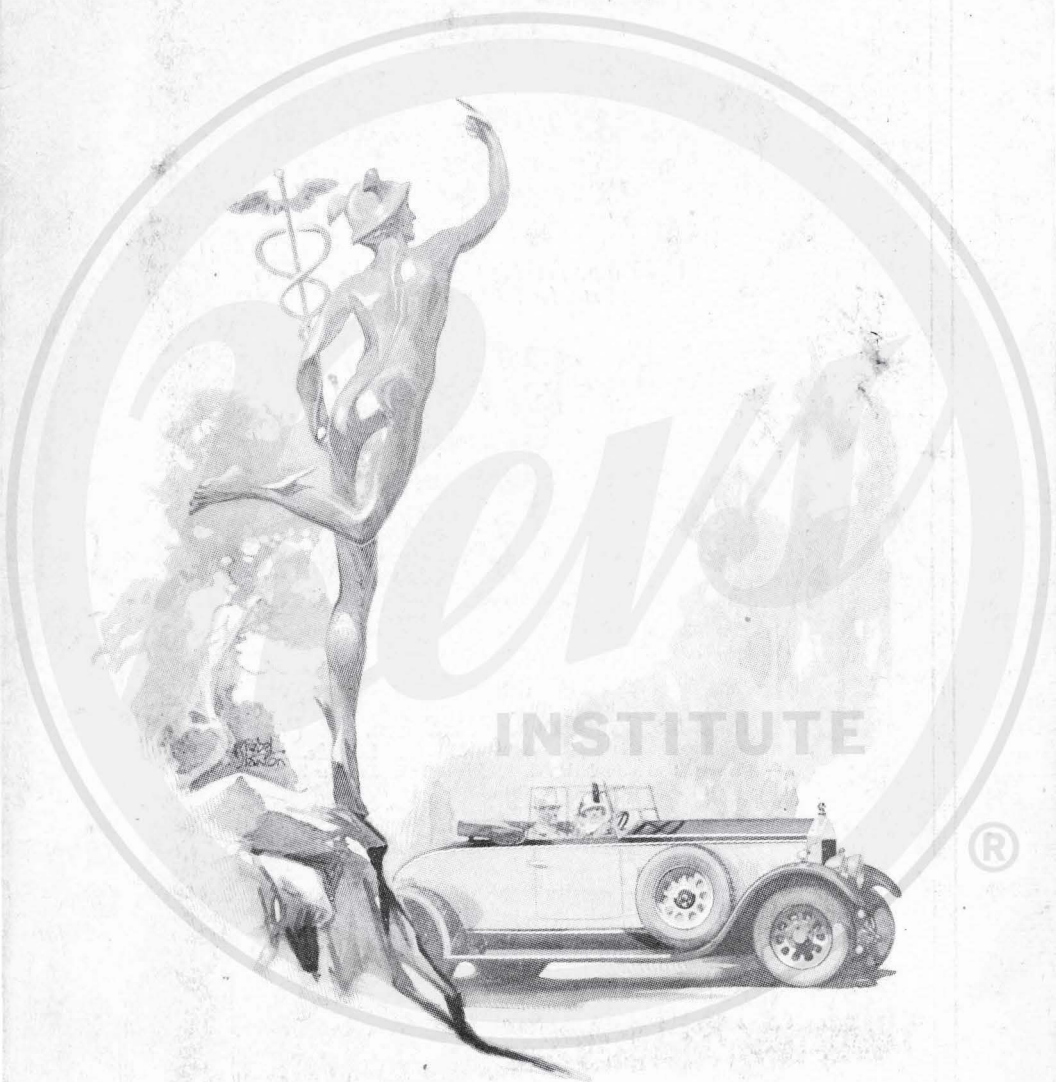


# WOLSELEY



September 1928

12/32 H.P. Four-Cylinder  
16/45 H.P. Six-Cylinder  
21/60 H.P. Eight-Cylinder



All Cars and Chassis are sold subject to the Terms of Business printed in the Company's Current Catalogues. All previous lists are hereby cancelled. The issue of this list does not constitute an offer. We reserve the right to alter any part as may be considered advantageous or to revise our prices without notice.

Black folding hood, hood cover, rigid all-weather curtains (open cars); sloping windscreen, with adjustable panel, and lock; electric starting and lighting outfit, including pair of non-dazzle headlights, pair of side lamps, tail lamp, and dashboard lamp; spare wheel with tyre, spare wheel carrier; speedometer, with trip; clock (8-day), electric horn, license holder, screen wiper, driving mirror, petrol gauge, calorimeter, folding luggage grille, shock absorbers, footrests, interior roof light and quarter lights, two silk pull-up cords, silk parcels net, roof ventilator, and pile carpet front and rear.

#### 16/45 H.P. Cars and 21/60 H.P. Cars

Sloping windscreen, with adjustable panel and lock; electric starting and lighting outfit, including pair of non-dazzle headlights, pair of side lamps, tail lamp, and dashboard lamp; spare wheel with tyre, spare wheel carrier; speedometer, with trip; clock (8-day), electric horn, license holder, screen wiper, driving mirror, petrol gauge, calorimeter, folding luggage grille, shock absorbers, footrests, interior roof light and quarter lights, two silk pull-up cords, silk parcels net, roof ventilator, pile carpet front and rear, number plates, and tool kit.

#### 12/32 H.P. Coach-bull Saloon

Black folding hood, rigid all-weather curtains (tourers); sloping adjustable windscreen; electric starting and lighting outfit, including pair of non-dazzle headlights, pair of side lamps, tail lamp, and dashboard lamp; spare wheel with tyre, spare wheel carrier; speedometer, with trip; clock (8-day), electric horn, license holder, screen wiper, driving mirror, petrol gauge, horn, license holder, screen wiper, driving mirror, petrol gauge, calorimeter, folding luggage grille, shock absorbers, number plates, tool kit. Saloons are also fitted with pile carpet front and rear, interior roof light, and silk blind to rear light.

#### 12/32 H.P. Touring Car, Saloon, and Coupe

### EQUIPMENT ON WOLSELEY CARS (Season 1929)

12/32 H.P. Four-Cylinder  
16/45 H.P. Six-Cylinder  
21/60 H.P. Eight-Cylinder

September 1928



# WOLSELEY

## WOLSELEY CARS

12/32 H.P. FOUR-CYLINDER 16/45 H.P. SIX-CYLINDER 21/60 H.P. EIGHT-CYLINDER

The **Wolseley 12/32 h.p. Four-cylinder Model** is a fast and powerful car of moderate rating and low tax. It puts up a splendid road performance, is exceptionally smooth and silent, and very economical to run.

Four-cylinder engine, 2.736 in. bore  $\times$  4 in. stroke. Treasury rating, 11.98 h.p. Tax payable, £12. Monobloc cylinders, cast integral with crankcase, with detachable head. Overhead valves and camshaft. Five-bearing crankshaft. Automatic engine lubrication by full pressure feed. Magneto ignition with hand control. Patent automatic equalising carburetter. Thermo-syphon cooling, with fan. Single plate clutch with ball thrust bearing. Four speeds and reverse. Rear axle of live type, driven by spiral bevel. Semi-elliptic springs front and rear, with shock absorbers. Chassis lubrication by grease gun. Wheelbase 8 ft. 10½ in. Track 4 ft. 8 in. Artillery pattern detachable steel wheels, fitted with 28 in.  $\times$  4.95 in. Dunlop reinforced balloon tyres. Internal expanding brakes to all four wheels.

The **Wolseley 21/60 h.p. Straight Eight-cylinder Model** has been developed in its main essentials on the lines of the famous Wolseley Two-litre "Six." It will maintain a very high touring speed with perfect comfort to the passengers, is astonishingly smooth and silent, and offers the perfection of motoring luxury at low cost.

Eight-cylinder engine, 2.9 in. bore  $\times$  4 in. stroke. Treasury rating 21.01 h.p. Tax payable, £21. Monobloc cylinders, cast integral with crankcase, with detachable head. Overhead valves and camshaft. Automatic engine lubrication by full pressure feed. Ten-bearing crankshaft. High tension ignition, with automatic and hand control. Patent automatic equalising carburetter. Thermo-syphon cooling, assisted by impeller and fan. Single plate clutch, with ball thrust bearing. Four speeds and reverse. Rear axle of semi-floating type, driven by spiral bevel. Semi-elliptic springs front and rear. Chassis lubrication by grease gun. Wheelbase 10 ft. 7 in. Track 4 ft. 8 in. Artillery pattern detachable steel wheels, with 31 in.  $\times$  5.25 in. Dunlop reinforced balloon tyres. Internal expanding brakes to all four wheels.

The **Wolseley 16/45 h.p. Six-cylinder Model** is the outstanding car of its type. Its quietness at any speed from 5 to 60 miles per hour, and the silky smoothness of its running, have made it everywhere famous as the "Silent Six."

Six-cylinder engine 2.9 in. bore  $\times$  4 in. stroke. Treasury rating, 15.7 h.p. Tax payable, £16. Monobloc cylinders, cast integral with crankcase, with detachable head. Overhead valves and camshaft. Automatic engine lubrication by full pressure feed. Seven-bearing crankshaft. Magneto ignition, with automatic and hand control. Patent automatic equalising carburetter. Thermo-syphon cooling, with fan. Single plate clutch, with ball thrust bearing. Four speeds and reverse. Rear axle driven by spiral bevel. Semi-elliptic springs front and rear, with shock absorbers. Chassis lubrication by grease gun. Wheel base 9 ft. 9 in. Track 4 ft. 8 in. Artillery pattern detachable steel wheels, fitted with 4¾ in. for 21 in. Dunlop medium pressure tyres. Internal expanding brakes to all four wheels.

For Illustrations of Complete Cars see overleaf. For equipment details see back.

WOLSELEY MOTORS (1927) LTD WARD END BIRMINGHAM

Telephone East 960

Telegrams "Exactitude Birmingham"



# WOLSELEY CARS

12/32 H.P. FOUR-CYLINDER    16/45 H.P. SIX-CYLINDER    21/60 H.P. EIGHT-CYLINDER

The **Wolseley 12/32 h.p. Four-cylinder Model** is a fast and powerful car of moderate rating and low tax. It puts up a splendid road performance, is exceptionally smooth and silent, and very economical to run.

Four-cylinder engine, 2.736 in. bore  $\times$  4 in. stroke. Treasury rating, 11.98 h.p. Tax payable, £12. Monobloc cylinders, cast integral with crankcase, with detachable head. Overhead valves and camshaft. Five-bearing crankshaft. Automatic engine lubrication by full pressure feed. Magneto ignition with hand control. Patent automatic equalising carburetter. Thermo-syphon cooling, with fan. Single plate clutch with ball thrust bearing. Four speeds and reverse. Rear axle of live type, driven by spiral bevel. Semi-elliptic springs front and rear, with shock absorbers. Chassis lubrication by grease gun. Wheelbase 8 ft. 10½ in. Track 4 ft. 8 in. Artillery pattern detachable steel wheels, fitted with 28 in.  $\times$  4.95 in. Dunlop reinforced balloon tyres. Internal expanding brakes to all four wheels.

The **Wolseley 21/60 h.p. Straight Eight-cylinder Model** has been developed in its main essentials on the lines of the famous Wolseley Two-litre "Six." It will maintain a very high touring speed with perfect comfort to the passengers, is astonishingly smooth and silent, and offers the perfection of motoring luxury at low cost.

Eight-cylinder engine, 2.9 in. bore  $\times$  4 in. stroke. Treasury rating 21.01 h.p. Tax payable, £21. Monobloc cylinders, cast integral with crankcase, with detachable head. Overhead valves and camshaft. Automatic engine lubrication by full pressure feed. Ten-bearing crankshaft. High tension ignition, with automatic and hand control. Patent automatic equalising carburetter. Thermo-syphon cooling, assisted by impeller and fan. Single plate clutch, with ball thrust bearing. Four speeds and reverse. Rear axle of semi-floating type, driven by spiral bevel. Semi-elliptic springs front and rear. Chassis lubrication by grease gun. Wheelbase 10 ft. 7 in. Track 4 ft. 8 in. Artillery pattern detachable steel wheels, with 31 in.  $\times$  5.25 in. Dunlop reinforced balloon tyres. Internal expanding brakes to all four wheels.

The **Wolseley 16/45 h.p. Six-cylinder Model** is the outstanding car of its type. Its quietness at any speed from 5 to 60 miles per hour, and the silky smoothness of its running, have made it everywhere famous as the "Silent Six."

Six-cylinder engine 2.9 in. bore  $\times$  4 in. stroke. Treasury rating, 15.7 h.p. Tax payable, £16. Monobloc cylinders, cast integral with crankcase, with detachable head. Overhead valves and camshaft. Automatic engine lubrication by full pressure feed. Seven-bearing crankshaft. Magneto ignition, with automatic and hand control. Patent automatic equalising carburetter. Thermo-syphon cooling, with fan. Single plate clutch, with ball thrust bearing. Four speeds and reverse. Rear axle driven by spiral bevel. Semi-elliptic springs front and rear, with shock absorbers. Chassis lubrication by grease gun. Wheel base 9 ft. 9 in. Track 4 ft. 8 in. Artillery pattern detachable steel wheels, fitted with 4¾ in. for 21 in. Dunlop medium pressure tyres. Internal expanding brakes to all four wheels.

*For Illustrations of Complete Cars see overleaf. For equipment details see back.*

WOLSELEY MOTORS (1927) LTD WARD END BIRMINGHAM

Telephone East 960

Telegrams "Exactitude Birmingham"



Prices for  
Season 1929

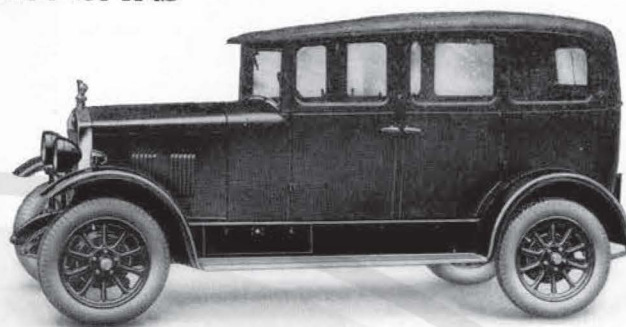
# WOLSELEY

Prices for  
Season 1929

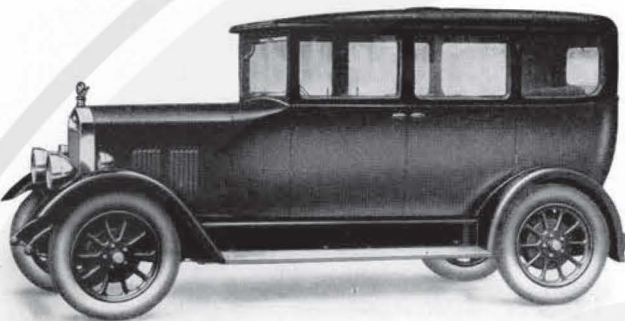
## 12/32 H.P. FOUR-CYLINDER CARS



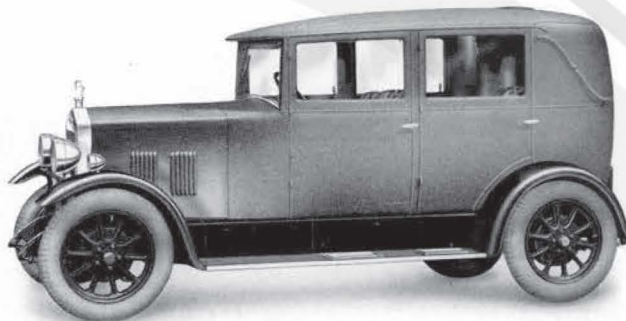
12/32 h.p. Touring Car. Price £265  
Extra for Triplex Glass .. £5



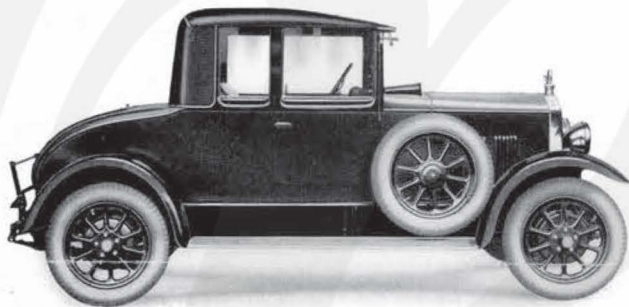
12/32 h.p. Six-Light Fabric Saloon. Price £300  
Extra for Triplex Glass .. £12 10s.



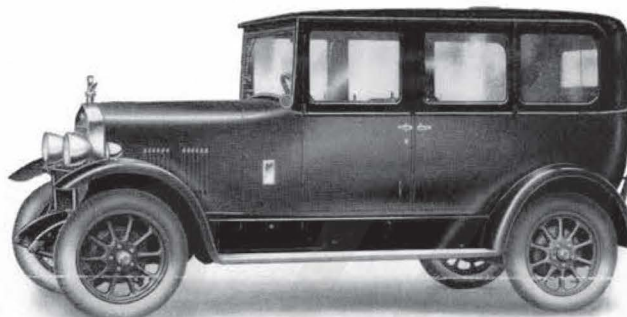
12/32 h.p. Saloon. Price £295  
Extra for Triplex Glass .. £12 10s.



12/32 h.p. Four-Light Fabric Saloon. Price £300  
Extra for Triplex Glass .. £12 10s.



12/32 h.p. Two-seater Coupe. Price £295  
Extra for Triplex Glass .. £10

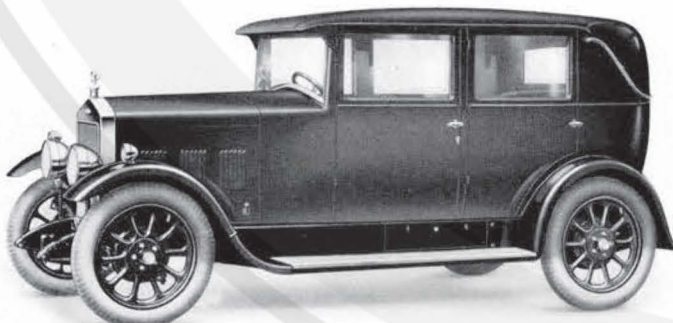


12/32 h.p. Coach-built Saloon. Price £315  
Extra for Triplex Glass .. £15

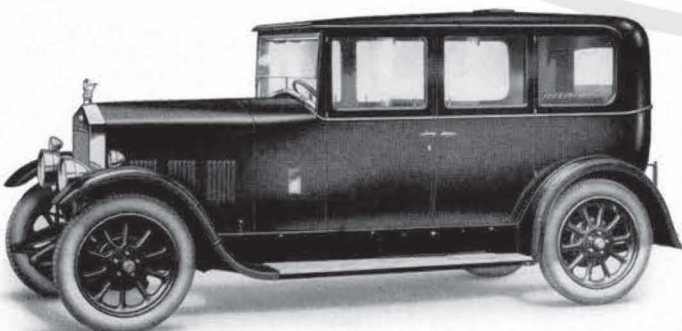
## 16/45 H.P. SIX-CYLINDER CARS



16/45 h.p. Touring Car. Price £365  
Extra for Triplex Glass .. £5



16/45 h.p. Four-Light Fabric Saloon. Price £375  
Extra for Triplex Glass .. £12 10s.  
Also supplied as a Six-Light Fabric Saloon at £375. Extra for Triplex Glass £15

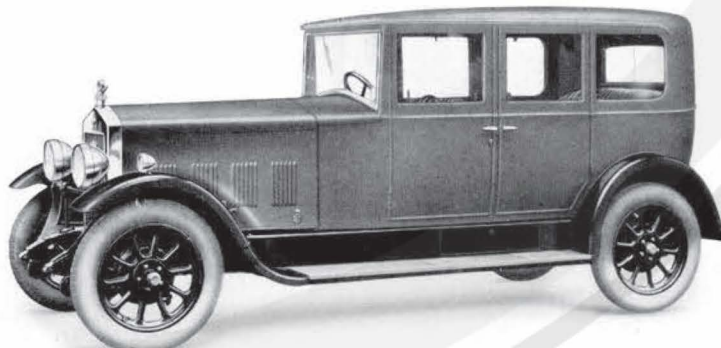


16/45 h.p. Coach-built Saloon. Price £375  
Extra for Triplex Glass .. £15

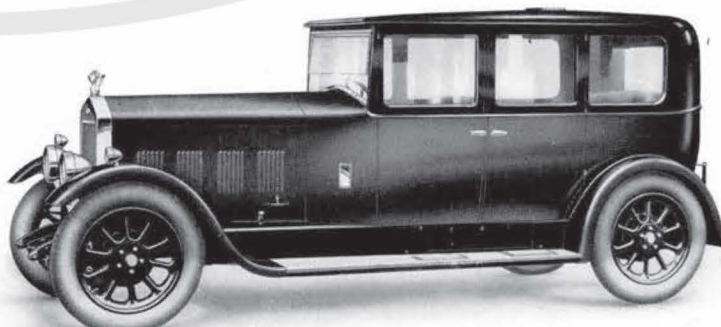
## 21/60 H.P. EIGHT-CYLINDER CARS



21/60 h.p. Touring Car. Price £540  
Extra for Triplex Glass .. £5



21/60 h.p. Six-Light Fabric Saloon. Price £550  
Extra for Triplex Glass .. £15  
Also supplied as a Four-Light Fabric Saloon at £550. Extra for Triplex Glass £12 10s.



21/60 h.p. Coach-built Saloon. Price £550  
Extra for Triplex Glass .. £15



# EQUIPMENT ON WOLSELEY CARS (Season 1929)

## *12/32 H.P. Touring Car, Saloon, Fabric Saloon, and Coupe*

Black folding hood, rigid all-weather curtains (tourers); sloping adjustable windscreen; electric starting and lighting outfit, including pair of non-dazzle headlights, pair of side lamps, tail lamp, and dashboard lamp; spare wheel with tyre, spare wheel carrier; speedometer, with trip; clock (8-day), electric horn, license holder, screen wiper, driving mirror, calormeter, petrol gauge, folding luggage grille, shock absorbers, number plates, tool kit. Saloons are also fitted with pile carpet front and rear, interior roof light, and silk blind to rear light.

## *12/32 H.P. Coach-built Saloon*

Sloping windscreen, with adjustable panel and lock; electric starting and lighting outfit, including pair of non-dazzle headlights, pair of side lamps, tail lamp, and dashboard lamp; spare wheel with tyre, spare wheel carrier; speedometer, with trip; clock (8-day), electric horn, license holder, screen wiper, driving mirror, petrol gauge, calormeter, folding luggage grille, shock absorbers, footrests, interior roof light, silk blinds to rear light and quarter lights, two silk pull-up cords, silk parcels net, roof ventilator, pile carpet front and rear, number plates, and tool kit.

## *16/45 H.P. Cars and 21/60 H.P. Cars*

Black folding hood, hood cover, rigid all-weather curtains (open cars); sloping windscreen, with adjustable panel, and lock; electric starting and lighting outfit, including pair of non-dazzle headlights, pair of side lamps, tail lamp, and dashboard lamp; spare wheel with tyre, spare wheel carrier; speedometer, with trip; clock (8-day), electric horn, license holder, screen wiper, driving mirror, petrol gauge, two fibre mats (touring car), folding luggage grille, shock absorbers, number plates, and tool kit. Saloons are also fitted with footrests, interior roof light, silk blinds to rear light and quarter lights, two silk pull-up cords, silk parcels net, roof ventilator, and pile carpet front and rear.

*All Cars and Chassis are sold subject to the Terms of Business printed in the Company's Current Catalogues. All previous lists are hereby cancelled. The issue of this list does not constitute an offer. We reserve the right to alter any part as may be considered advantageous or to revise our prices without notice.*