

THE ARMSTRONG SIDDELEY FOUR 14

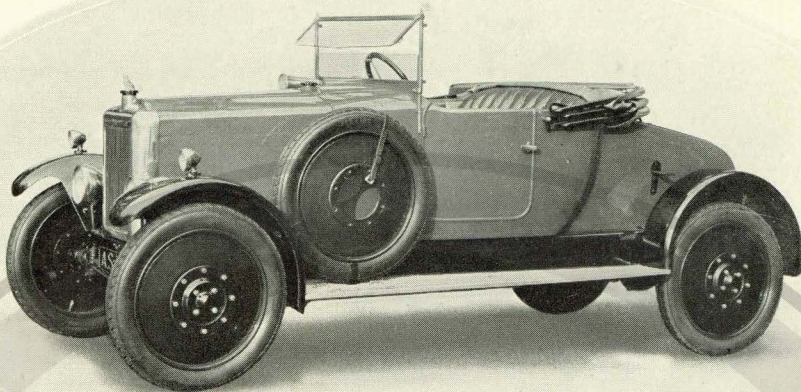
a
full-sized
touring car for
family use at a price
which makes it the best
investment in its
class



1924

PROPERTY OF THE
ROYAL AUTOMOBILE CLUB MOTORING LIBRARY
NOT TO BE TAKEN AWAY

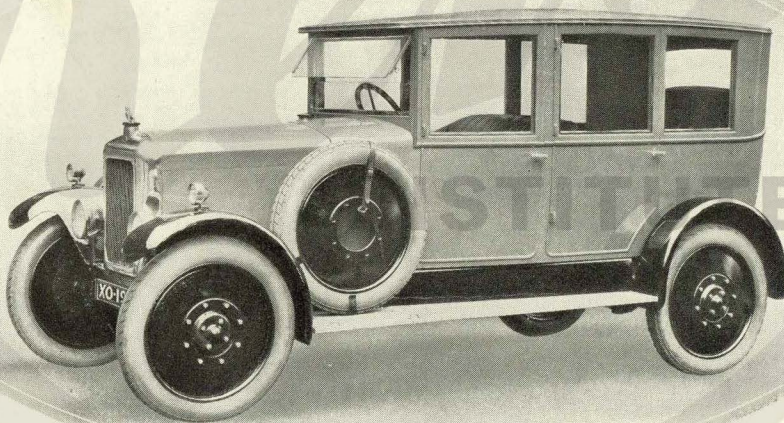
C. F. DINGWALL



2-Seater, with Dickey, £360

Extra for 765 × 105 tyres (as shown) £5 nett.

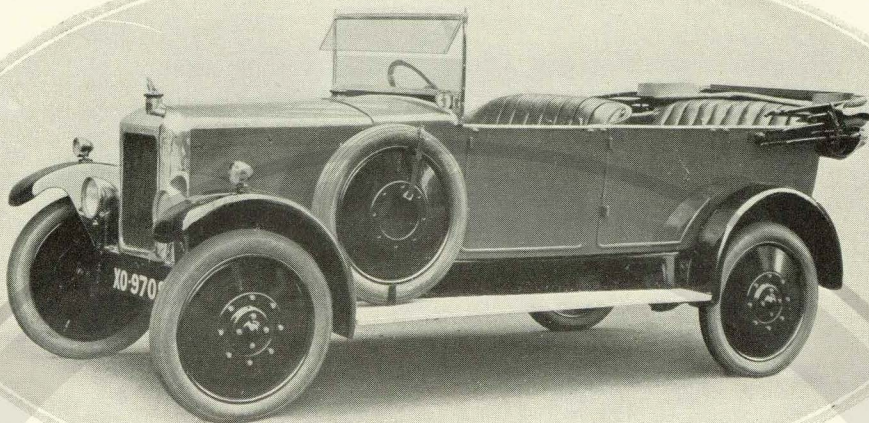
Finished in mole colour with brown leather, dark grey with dark green leather,
or dark green with dark green leather.



Saloon, £480

Painted dark blue or dark grey. Trimmed with fawn hairline cloth or blue or dark green leather.
Fitted with 765 × 105 tyres.





The Armstrong Siddeley Four-14 Standard Open Touring Car, £360

Extra for 765 × 105 tyres £5 nett.

Finished in mole colour with brown leather, dark grey with dark green leather, or dark green with dark green leather.

SPECIFICATION

CHASSIS DIMENSIONS. Wheelbase, 9 ft. 3 in. Track, 4 ft. 8 in. Overall Length, 12 ft. 6 in. Overall Width, 5 ft. 6 in. Ground Clearance, 9½ in.

FRAME. Of pressed channel section steel.

ENGINE. 4-Cylinder mono-bloc detachable head. Bore 3 in., Stroke 4 in., R.A.C. rating 14.4. Cubic capacity 1852 c.c. Overhead valves. Valve gear completely enclosed by easily removable covers.

LUBRICATION. By pressure pump with positive distribution.

CARBURETTOR. Claudel Hobson—bolted to cylinder block and warmed by exhaust gas.

IGNITION. By high tension magneto situated on the offside of the engine.

CONTROL. By accelerator foot pedal and by hand ignition and throttle levers.

CLUTCH. Single plate clutch of special design providing easy engagement and change of speed.

SPRINGS. Half-cantilever front and rear, fitted with spring gaiters.

GEAR BOX AND REAR AXLE. Constructed in one unit. 3-speed gear box in centre of chassis attached by torque tube to rear axle and providing three speeds forward and one reverse. 1st 17'5; 2nd 8'63; 3rd 4'7. Reverse 22'25. Drive by spiral bevel wheel.

FRONT AXLE. Stamped H section. Fitted with jaw type swivel axles on which the front hubs run on ball bearings. Lubricated by grease pump.

WHEELS AND TYRES. Special disc wheels with one spare. Five 760 × 90 cord tyres.

BRAKES. Two independent internal brakes acting in drums integral with rear disc wheels. The shoes are fabric lined. Hand brake lever is placed central in the chassis.

COOLING. Radiator situated in front of engine. Circulation by centrifugal pump. Cooling fan integral with fly-wheel.

PETROL TANK. Gravity feed from tank situated in the scuttle. Capacity, approximately 7 gallons.

PRICE of complete car with electric lighting and starting by Lucas dynamo and motor; 5 lamps and accumulators; speedometer, clock, electric horn, spare wheel and tyre, pump, complete kit of tools, and number plates. **£360**

COACHWORK

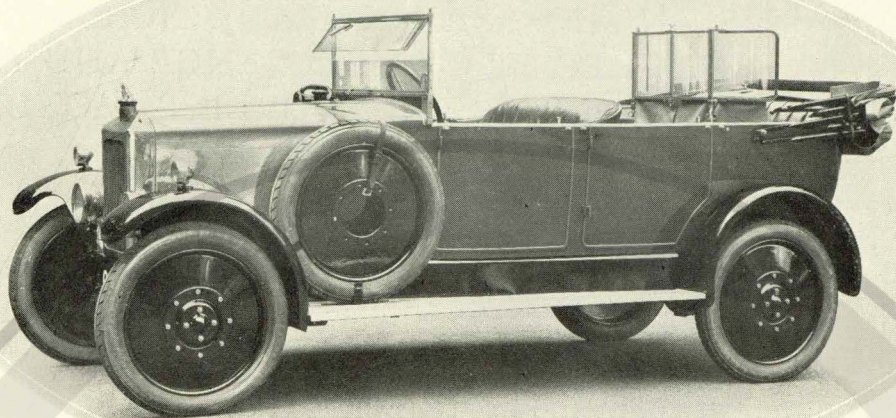
Designed on the most modern lines with low, deep seats specially constructed for comfort. Fitted with hood and side curtains extending to wind-screen and opening with doors, giving protection against all weathers. Adjustable front wind-screen with two planes. Fibre mat to front and pile carpet to rear floorboards.

PRICE OF CHASSIS

Equipped with Runner Boards, Electric Engine Starter and Lighting Set Complete with 5 Lamps, Speedometer, Clock, Electric Horn, Five 760 × 90 Dunlop Tyres, Kit of Tools, Etc.

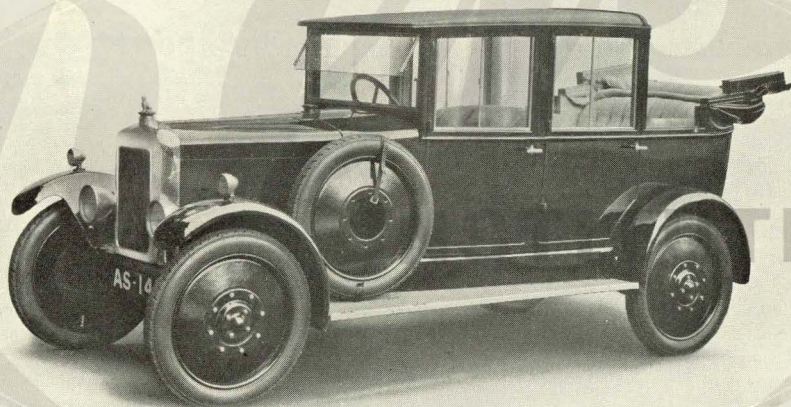
£260

Delivery at Works
Coventry



Standard Open Touring Car, with special equipment, £385

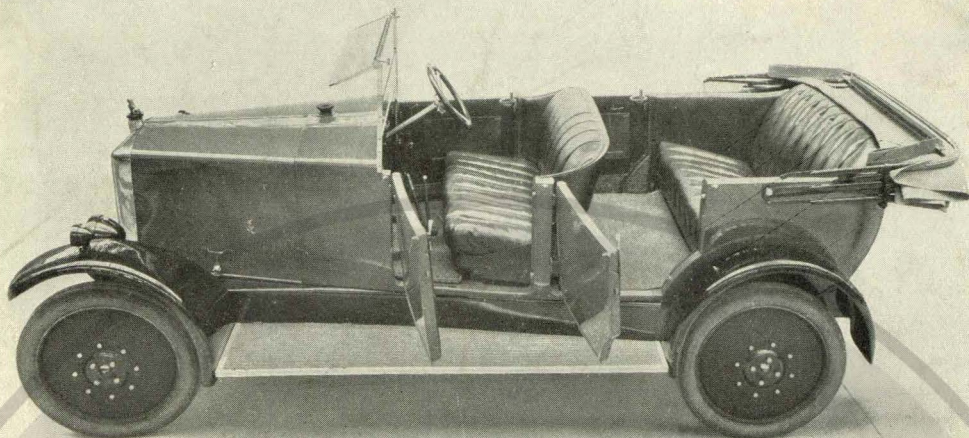
4-panel rear wind-screen, 765 mm. \times 105 mm. cord tyres ; hand wind-screen wiper ; dashboard lamp ; bulb horn ; staples and 4 straps for luggage on stepboards. Finished in mole colour with brown leather, dark grey with dark green leather, or dark green with dark green leather.



Saloon Landaulette, £505

Painted dark blue or dark grey. Trimmed with fawn hairline cloth or blue or dark green leather. Fitted with 765 \times 105 tyres.





Showing the ample seating accommodation

SERVICE DEPARTMENTS

Efficient Service Departments for the use of Armstrong Siddeley owners are established—under our own management—and in close communication with our works, at the following centres :

LONDON

Address :—CHURCH STREET
LISSON GROVE, N.W.8

Telegrams :—Sidarm, Padd, London
Telephone :—3451 and 3452 Paddington

COVENTRY

Address :—PARKSIDE
COVENTRY

Telegrams :—Sidarm, Coventry
Telephone :—Coventry 954

BRISTOL

Address :—ANCHOR ROAD, LOWER
COLLEGE GREEN, BRISTOL

Telegrams :—Sidarm, Filton
Telephone :—Bristol 5968

MANCHESTER

Address :—GT. NORTHERN GARAGE
WATSON STREET, MANCHESTER

Telegrams :—Sidarm, Manchester
Telephone :—3362 City

LEEDS

Address :—GRANT AVENUE
ROUNDHAY ROAD, LEEDS

Telegrams :—Sidarm, Leeds
Telephone :—Leeds 24909

NEWCASTLE

Address :—SCOTSWOOD
NEWCASTLE-ON-TYNE

Telegrams :—Sidarm, Newcastle
Telephone :—3061 Central

GLASGOW

Address :—HUGHENDEN ROAD, KELVINSIDE, GLASGOW

Telegrams :—Sidarm, Glasgow
Telephone :—4144 Western





THE ARMSTRONG SIDDELEY FOUR-14 IS AN ALL-BRITISH CAR WHICH WILL COMPETE IN PERFORMANCE AND IN PRICE WITH THE WORLD'S MOTOR PRODUCTS

It will go anywhere a car can go. It is roomy and comfortable—with 4 ft. 8 in. track, $9\frac{1}{2}$ to 10 in. ground clearance, and an engine which develops over 30 h.p. Easy to handle, and in the highest degree reliable. Owing to the lightness of its construction and the perfect method of transmission of power, the wear on tyres is extremely light.

Its first cost is very moderate—£360, fully equipped. Running expenses are light. Petrol consumption averages 26 to 28 miles per gallon.

Its designers have given particular attention to the requirements of the inexperienced. The points needing attention have been reduced to a minimum. Steering and control are exceedingly easy.

The Armstrong Siddeley Four-14 h.p. incorporates the knowledge gathered in 20 years' use and manufacture of motor carriages of the highest class. It has behind it all the experience, resources and reputation of one of the largest engineering organisations in the world, the firm of Sir W. G. Armstrong Whitworth & Co., Ltd.

ARMSTRONG SIDDELEY MOTORS LIMITED

(Allied with Sir W. G. Armstrong Whitworth & Company, Ltd.)

HEAD OFFICE AND WORKS: COVENTRY

Telephone:—Coventry 954 Telegrams:—Sidarm, Coventry

LONDON: 10, OLD BOND STREET, W. 1

Telephone:—Gerrard 6437 Telegrams:—Armsidco, Piccy, London

MANCHESTER: 35, KING STREET WEST

Telephone:—City 6362 Telegrams:—Armsidco, Manchester

¶ There are two Armstrong Siddeley 6-Cylinder Models, 18 h.p. and 30 h.p., prices from £670 complete. Full particulars free on application.