

ARMSTRONG SIDDELEY MOTORS LTD

(Allied with Sir W. G. Armstrong Whitworth & Company Ltd.)

HEAD OFFICE AND WORKS : COVENTRY

Telephone : Coventry 954. Telegrams : Sidarm Coventry

LONDON : 10 OLD BOND STREET, W.1

Telephone : Gerrard 6439. Telegrams : Armsidco Piccy London

MANCHESTER : 35 KING STREET WEST

Telephone : City 6362. Telegrams : Armsidco Manchester

Agents in all Principal Centres. Service Depots at Coventry, London,
Manchester, Newcastle, Leeds, Bristol and Glasgow



Curwen Press

ARMSTRONG
SIDDELEY

PROPERTY OF THE
ROYAL AUTOMOBILE CLUB LIBRARY
NOT TO BE TAKEN AWAY



TO PROVE to the public that Armstrong Siddeley 6 Cylinder Cars besides being moderate in first cost are both reliable and economical, an 18 h.p. Open Touring model and a 30 h.p. Interior Drive Limousine were run—under R.A.C. observation—10,000 miles and 15,000 miles respectively—distances much longer than the average owner covers in a year. Twenty-five thousand miles in all—more than the distance round the world—in 57 days!

Both cars were run day and night continuously—450 miles every 24 hours (Sundays excepted). Both emerged triumphant from their test. Full particulars in R.A.C. Certificates, post free on application.

THE Armstrong Siddeley 6 Cylinder Motor Carriages are known as one of the leading and most successful productions in the world. They are distinguished in appearance and comfortable in the highest degree. They are smooth and silent, and respond quickly to every demand for power or speed.

For those who desire a car of more moderate price and power there is the Armstrong Siddeley Fourteen which is the best value in its class. It has been designed for use in any part of the world, having a 4 ft. 8 in. track, 9½ to 10 in. ground clearance, and an engine which develops over 30 h.p. It is easy to handle and in the highest degree reliable.

Behind all are twenty years' practical experience in successful motor manufacturing, the knowledge gained in designing and making large numbers of engines for aircraft, and the resources of the world-famous firm of engineers, Sir W. G. Armstrong Whitworth & Co. Ltd.



*You
cannot
buy a
better
Car*

SPECIFICATION of 30 h.p. MARK II 6 Cyl. CHASSIS

DIMENSIONS

Wheelbase, 11ft. 3ins. Track, 4ft. 8ins. Overall length, 15ft. 4ins. Overall width, 5ft. 8ins.

FRAME

Special design ensuring great rigidity.

ENGINE

3.5 ins. bore, 5.25ins. stroke, C.C. 4960. R.A.C. Rating 29.5 h.p. One-piece cylinder block casting with two detachable heads covering three cylinders each. Overhead valves enclosed. Magneto ignition.

CARBURETTOR

Claudel Hobson of special design.

GEAR-BOX AND REAR AXLE

Constructed in one unit. Gear-Box in centre of chassis attached by torque tube to rear axle. Spiral bevel drive.

GEARING

With 3.75 to 1 reduction in rear axle the ratios are: 1st speed, 12.6; 2nd, 6.1; 3rd, 3.75 (direct).

FRONT AXLE

H type. Designed to ensure easy steering and to eliminate wear.

STEERING

Worm and wheel on ball bearings.

SPRINGS

Front: Semi-elliptical. Rear: Cantilever, adjustable to suit load. Springs enclosed in gaiters.

WHEELS AND TYRES

Special disc wheels, one spare rim. Five 895 x 135 mm. Dunlop cord tyres.

FOUR WHEEL BRAKES

Independent internal brakes acting in drums integral with rear disc wheels. One set pedal applied together with Ferrot type front wheel brakes and the other separately operated by central lever. Shoes fabric lined, large diameter. Central hand-brake lever.

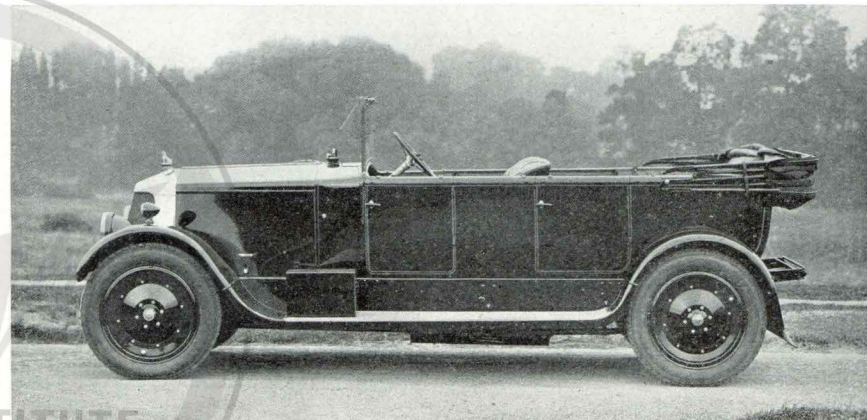
Chassis equipped with step-boards, wings, engine-starter and electric lighting complete with 5 lamps.

PRICE OF CHASSIS

Including Clock, Speedometer, Electric Klaxon Horn, Spare Wheel and Tyre.

£800

Delivery at Works.



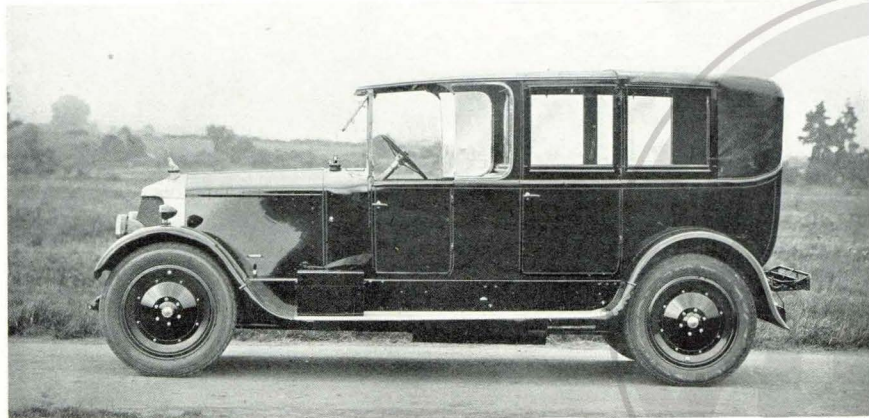
The Armstrong Siddeley 30 h.p. Mark II 6 Cyl. Open Touring Car, ¹⁰⁰⁰£1,050.
Delivery at Works. Four wheel brakes fitted



*You
cannot
buy a
better
Car*



*You
cannot
buy a
better
Car*



The Armstrong Siddeley 30 h.p. Mark II 6 Cyl. Three-quarter Landaulette,
Delivery at Works.

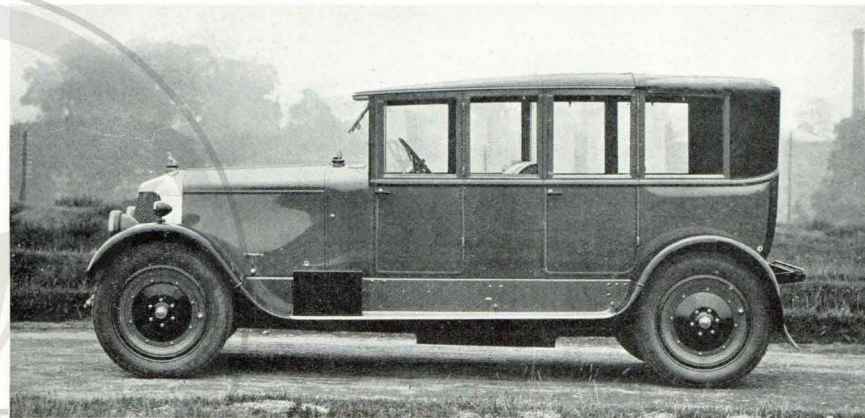
£1,225. 1175

Four wheel brakes fitted

4



*You
cannot
buy a
better
Car*



The Armstrong Siddeley 30 h.p. Mark II 6 Cyl. Touring Landaulette, £1,225. 1225

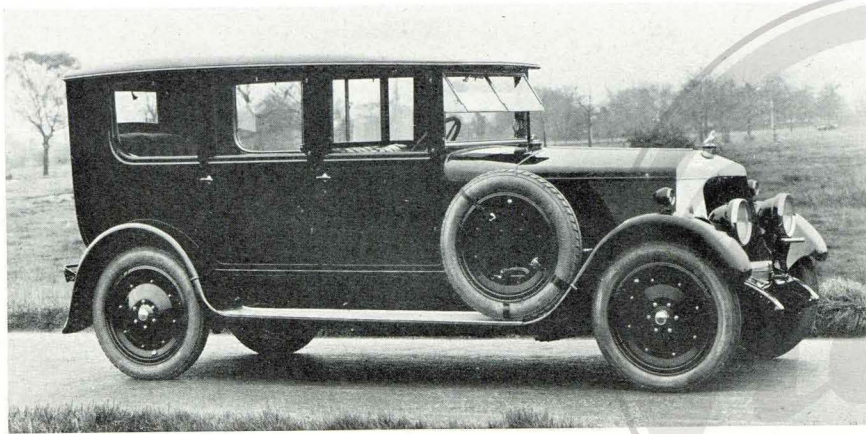
Delivery at Works.

Four wheel brakes fitted

5



*You
cannot
buy a
better
Car*



The Armstrong Siddeley 30 h.p. Mark II 6 Cyl. Enclosed Limousine, £1,350.

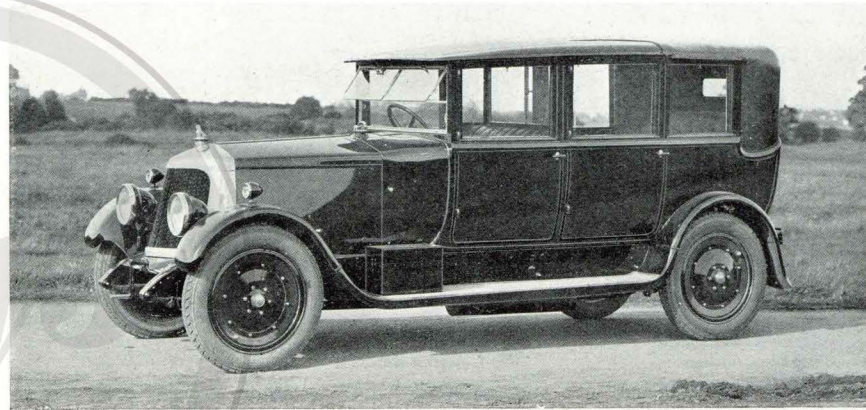
Delivery at Works.

Four wheel brakes fitted

6



*You
cannot
buy a
better
Car*



The Armstrong Siddeley 30 h.p. Mark II 6 Cyl. Enclosed Landaulette, £1,350.

Delivery at Works.

Four wheel brakes fitted

7



*You
cannot
buy a
better
Car*

SPECIFICATION of 18 h.p. 6 CYLINDER CHASSIS

DIMENSIONS

Wheelbase, 10ft. Track, 4ft. 6ins. Overall length, 13ft. 9ins. Overall width, 5ft. 5ins.

FRAME

Special design ensuring great rigidity.

ENGINE

2.73ins. bore, 4.125ins. stroke, C.C. 2380. R.A.C. Rating 17.9 h.p. Two 3-cylinder castings with aluminium water-jacket covers. Overhead valves enclosed. Magneto ignition.

CARBURETTOR

Claudel Hobson of special design.

GEAR-BOX AND REAR AXLE

Constructed in one unit. Gear-box in centre of chassis attached by torque tube to rear axle. Spiral bevel drive.

GEARING

With 4.7 to 1 reduction in rear axle the ratios are: 1st speed, 16.65; 2nd, 7.82; 3rd, 4.7 (direct).

FRONT AXLE

H type. Designed to ensure easy steering and to eliminate wear.

STEERING

Worm and wheel on ball bearings.

SPRINGS

Front: Semi-elliptical. Rear: Cantilever, adjustable to suit load. Springs enclosed in gaiters.

WHEELS AND TYRES

Special disc wheels, one spare rim. Five Dunlop cord tyres; on chassis and touring car 815 x 105, on closed cars 820 x 120 mm.

Hand and foot controlled brakes on all four wheels, the front brakes being of Ferrot type. Shoes fabric lined, large diameter. Central hand-brake lever.

The Chassis is equipped with step-boards, wings, engine-starter and electric lighting complete with 5 lamps.

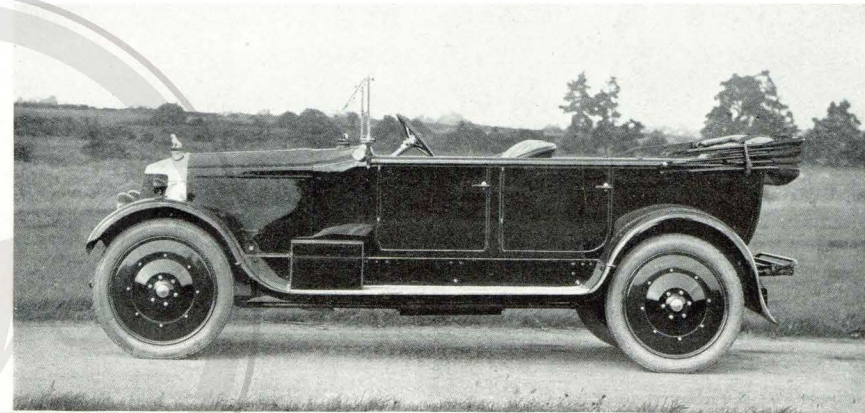
PRICE OF CHASSIS

Including Clock, Speedometer, Electric Klaxon Horn, Spare Wheel and Tyre.

£450

Delivery at Works

8



The Armstrong Siddeley 18 h.p. 6 Cyl. Open Touring Car, £625.

Delivery at Works.

Four wheel brakes fitted

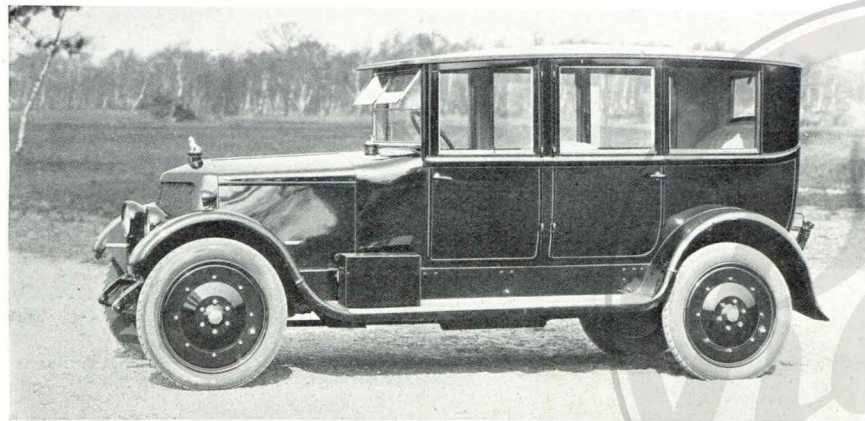
9



*You
cannot
buy a
better
Car*



*You
cannot
buy a
better
Car*



The Armstrong Siddeley 18 h.p. 6 Cyl. Saloon, ⁶⁹⁵£725.

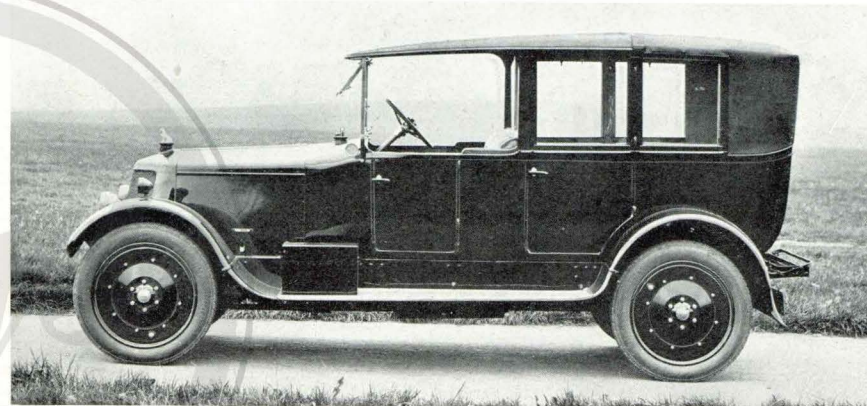
Delivery at Works.

Four wheel brakes fitted

10



*You
cannot
buy a
better
Car*



The Armstrong Siddeley 18 h.p. 6 Cyl. Three-quarter Landaulette, ⁷⁵⁰£775.

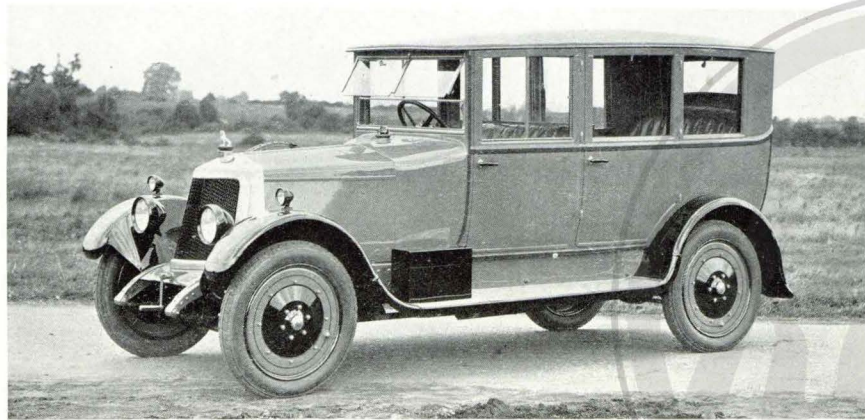
Delivery at Works.

Four wheel brakes fitted

11



*You
cannot
buy a
better
Car*



The Armstrong Siddeley 18 h.p. 6 Cyl. Enclosed Limousine, £820.⁷⁹⁵

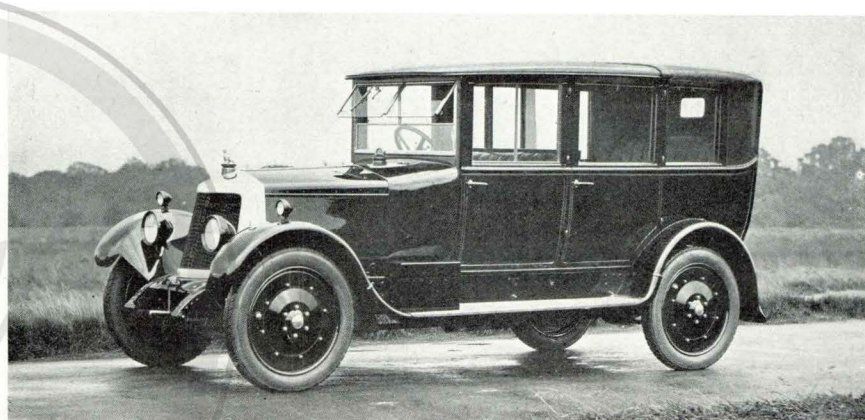
Delivery at Works.

Four wheel brakes fitted

12



*You
cannot
buy a
better
Car*



The Armstrong Siddeley 18 h.p. 6 Cyl. Enclosed Landaulette, £820.⁷⁹⁵

Delivery at Works.

Four wheel brakes fitted

13



*The
Best
Invest-
ment
in its
Class*

SPECIFICATION of 14 h.p. 4 CYLINDER CHASSIS

CHASSIS DIMENSIONS

Wheelbase, 9ft. 6ins. Track, 4ft. 8ins. Overall length, 13ft. Overall width, 5ft. 6ins. Ground clearance, 9-10 ins.

FRAME

Of pressed channel section steel.

ENGINE

Four cylinder mono-bloc detachable head. Bore 3in. Stroke 4in. C.C. 1852. R.A.C. Rating 14.4. Enclosed overhead valves; easily removable covers. Magneto ignition.

CARBURETTOR

Claudel Hobson—bolted to cylinder block and warmed by exhaust gas.

SPRINGS

Semi-elliptic front and rear, with spring gaiters.

GEAR-BOX AND REAR AXLE

Constructed in one unit. 3-speed gear box in centre of chassis, three speeds forward and one reverse. Spiral bevel drive.

FRONT AXLE

Stamped H section. Fitted with jaw type swivel axles on which the front hubs run on ball bearings.

WHEELS AND TYRES

Special disc wheels with one spare. Five 29 in. x 4'95 in. or 765 x 105 mm. balloon tyres.

FOUR WHEEL BRAKES

A pair of fabric-lined shoes act internally on each wheel drum. The central hand lever and also the pedal control all four brakes. Control by rods fitted with easy adjustment from outside the body.

COOLING

Radiator in front of engine. Circulation by centrifugal pump. Cooling fan integral with fly-wheel.

PETROL TANK

Gravity feed from tank situated in the scuttle. Capacity, 8 gallons.

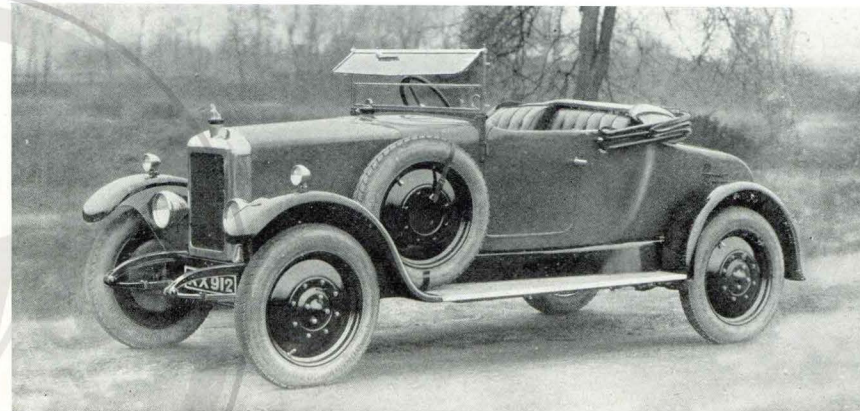
PRICE OF CHASSIS

The Chassis is equipped with Runner Boards, Electric Engine Starter, and Lighting Set complete with 5 Lamps, Speedometer, Clock, Electric Horn, Vertical Petrol Gauge, Five Tyres, Kit of Tools, etc.

£260-230

Delivery at Works

14



*The
Best
Value
in its
Class*

The Armstrong Siddeley Fourteen Mendip Two-Seater, £360.

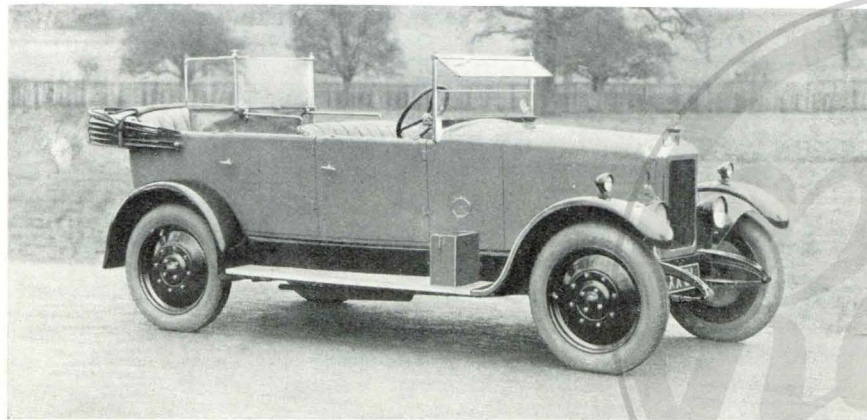
Delivery at Works.

Four wheel brakes fitted

15



*The
Best
Value
in its
Class*



The Armstrong Siddeley Fourteen Cotswold Open Touring Car, £360.

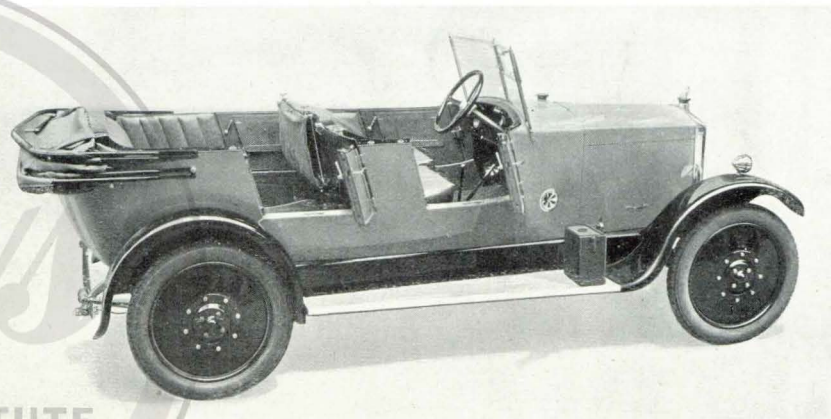
Delivery at Works.

Four wheel brakes fitted

16



*The
Best
Value
in its
Class*



The Armstrong Siddeley Fourteen with Sandown body, £395.

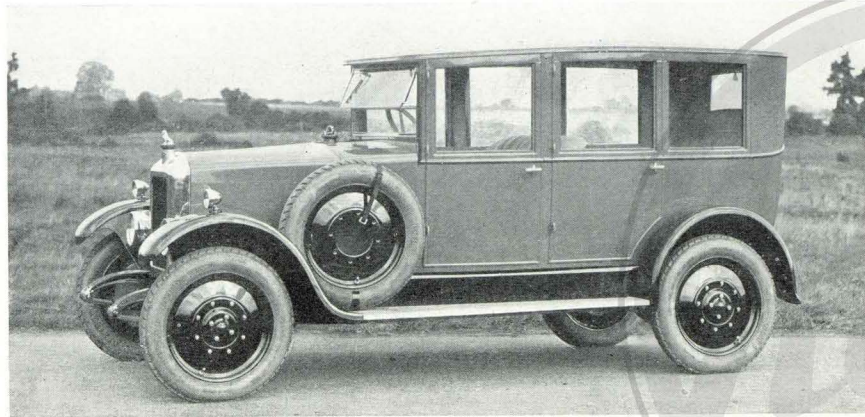
Delivery at Works.

Four wheel brakes fitted

17



*The
Best
Value
in its
Class*



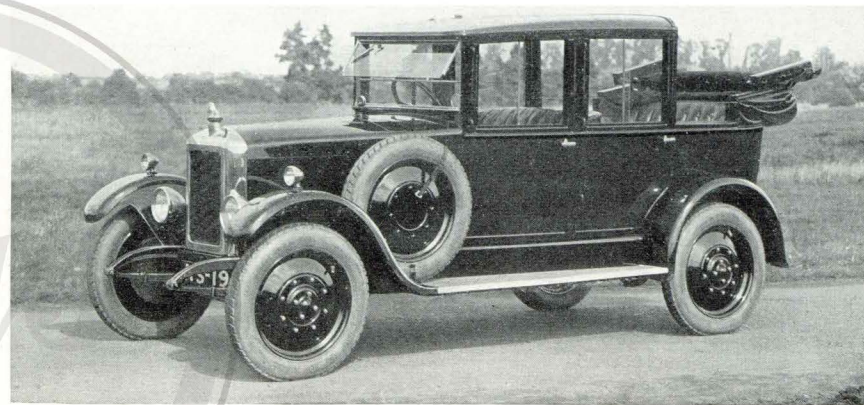
The Armstrong Siddeley Fourteen with Broadway Saloon Body, £460.

Delivery at Works.

Four wheel brakes fitted



*The
Best
Value
in its
Class*



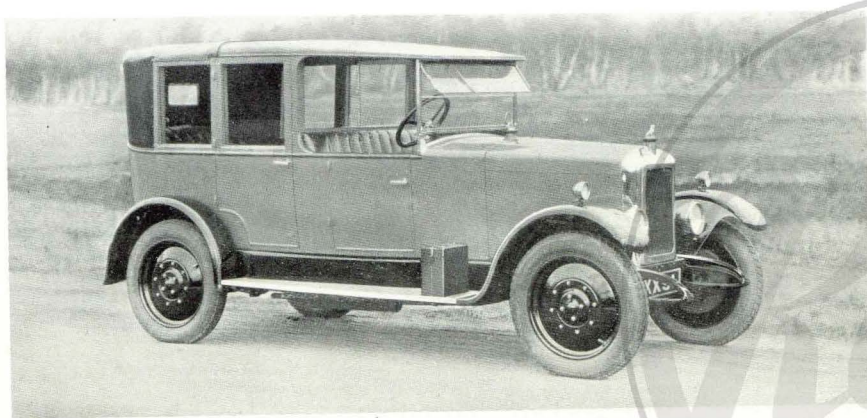
The Armstrong Siddeley Fourteen with Lynton Saloon Landaulette body, £485.

Delivery at Works.

Four wheel brakes fitted



*The
Best
Value
in its
Class*



The Armstrong Siddeley Fourteen with Grasmere Three-quarter Landauette
body, £485. 4-25 Four wheel brakes fitted
Delivery at Works.

SERVICE DEPÔTS

LONDON

Church Street, Edgware Road, N.W.8
Telephone: Paddington 7951
Telegrams: Sidarm, Padd. London

BRISTOL

Anchor Road, Lower College Green
Telephone: Bristol 5968

NEWCASTLE

Scotswood
Telephone: Central 3061

GLASGOW

4/10 Grant Street, St. George's Road, West
Telephone: Charing 1499

COVENTRY

Parkside
Telephone: Coventry 954

MANCHESTER

Great Northern Garage, Watson Street
Telephone: City 6362

LEEDS

Grant Avenue,
Roundhay Road
Telephone: Leeds 24909

† Telegraphic Address for all Service Depôts except London: 'Sidarm'

