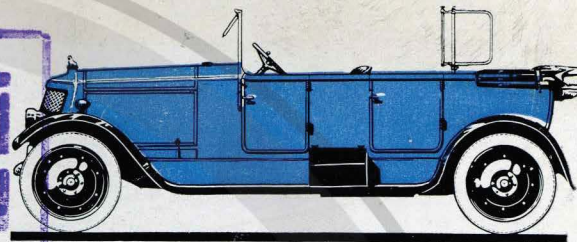




We reserve the right to alter the specification as may be considered advantageous or to revise prices without notice

Printed at the Curwen Press, Plaistow, E.13

C. F. DINGWALL



ARMSTRONG
SIDDELEY
6 Cylinder Cars

*Motor Carriages
of
Perfect Comfort*



PROPERTY OF THE
ROYAL AUTOMOBILE CLUB LIBRARY
NOT TO BE TAKEN AWAY

You cannot buy a better Car

FOR MERIT



The
**ARMSTRONG
SIDDELEY**

18 h.p. 6 Cylinder Car

which underwent a 10,000
Miles R.A.C. Road Test
for Reliability & Economy
has been awarded the
DEWAR TROPHY

for
the most meritorious performance
in Official Trials during
the 12 months ending
October 15
1922



YOU CANNOT BUY A BETTER CAR

ARMSTRONG SIDDELEY

Finest Value
IN FINE CARS

THE EQUIPMENT of each model is complete
and includes every item desired in a high-class
motor carriage.

1924

PROPERTY OF THE
ROYAL AUTOMOBILE CLUB LIBRARY
NOT TO BE TAKEN AWAY

ARMSTRONG SIDDELEY MOTORS LTD.

(Allied with Sir W. G. Armstrong Whitworth & Company Ltd.)

HEAD OFFICE AND WORKS : COVENTRY.

Telephone : Coventry 954. Telegrams : 'Sidarm Coventry.'

LONDON : 10, OLD BOND STREET, W.1.

Telephone : Gerrard 6439. Telegrams : 'Armsidco Piccy London.'

MANCHESTER : 35, KING STREET WEST.

Telephone : City 6362. Telegrams : 'Armsidco Manchester.'

Agents in all Principal Centres. Service Depôts at Coventry,
London, Manchester, Newcastle, Leeds, Bristol and Glasgow.

THE Armstrong Siddeley 6 Cylinder Motor Carriages are known as one of the leading and most successful productions in the world. They are moderate in first cost—the present prices of the chassis are less than our pre-war prices. They are distinguished in appearance and comfortable in the highest degree. They are smooth and silent in action, and respond quickly to every demand for power or speed.

In order to prove to the public that the Armstrong Siddeley 6 Cylinder Cars besides being moderate in first cost are reliable in use and economical in running expenses, both an 18 h.p. Open Touring model and a 30 h.p. Interior Drive Limousine were run—under R.A.C. observation—10,000 miles and 15,000 miles respectively—each distance much longer than that which the average owner accomplishes in one year. Twenty-five thousand miles—more than the entire distance round the world—in 57 days!

Both cars were run day and night continuously—450 miles every 24 hours (Sundays excepted). Both emerged triumphant from their test.

Full particulars in R.A.C. Certificates, of which copies will be sent post free on application.

The two models—18 h.p. and 30 h.p.—of Armstrong Siddeley 6 Cylinder Cars are proved and tested productions, each in its different sphere affording every possible service which the owner of a high-class motor carriage can require.

Behind them is a wealth of practical experience on the road since the earliest days of motoring, more than twenty years spent in successful motor manufacturing, the knowledge gained during and since the years 1914-1918 in designing and making large numbers of highest-grade engines for aircraft, and all the resources of the world-famous firm of engineers, Sir W. G. Armstrong Whitworth & Co. Ltd.

You cannot buy a better Car

Specification of 18 h.p. Chassis

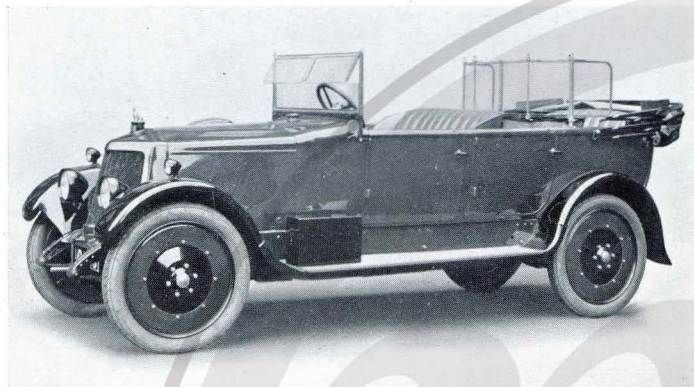
DIMENSIONS :	Wheelbase, 10 ft. Track, 4 ft. 3 ins. Overall length, 13 ft. 9 ins. Overall width, 5 ft. 2 ins.
FRAME :	Special Design. Very deep side members, with step-boards riveted thereto, thus ensuring great rigidity.
ENGINE :	Six-Cylinder, 2.73 ins. bore, 4.125 ins. stroke, R.A.C. Rating, 17.9 h.p. Two 3-cylinder castings with aluminium water-jacket covers. Overhead valves. Valve gear completely enclosed. Magneto ignition.
CARBURETTOR :	Claudel Hobson of special design to suit engine.
GEAR-BOX & REAR AXLE :	Constructed in one unit. Gear-box in centre of chassis attached by torque tube to rear axle. Drive by spiral bevel wheel.
GEARING :	With 4.7 to 1 reduction in rear axle the ratios are: 1st speed, 16.65; 2nd speed, 7.82; 3rd speed, 4.7 (direct).
FRONT AXLE :	H type. Centre line of swivel-pin passes through point of contact of tyre with ground. Designed to ensure easy steering and to eliminate wear.
STEERING :	By worm and wheel.
SPRINGS :	Front : Semi-elliptical. Rear : Cantilever, with shackles adjustable to suit load. All springs enclosed in gaiters.
WHEELS & TYRES :	Special disc wheels, one spare rim. Five 815 × 105 m/m. Dunlop cord tyres.
BRAKES :	Two independent internal brakes acting in drums integral with rear disc wheels. The brake shoes are fabric lined, 17½ ins. diameter, giving easy action and large wearing surface. Central hand-brake lever.
COOLING :	Radiator situated in front of engine. Circulation by centrifugal pump. Cooling fan integral with fly-wheel.
PETROL TANK :	Gravity feed. Capacity, 10 gallons.

The chassis is equipped with step-boards, wings, engine-starter and electric lighting complete with five lamps.

PRICE OF CHASSIS

Including Clock, Speedometer, Electric Klaxon Horn, Spare Wheel and Tyre,

You cannot buy a better Car



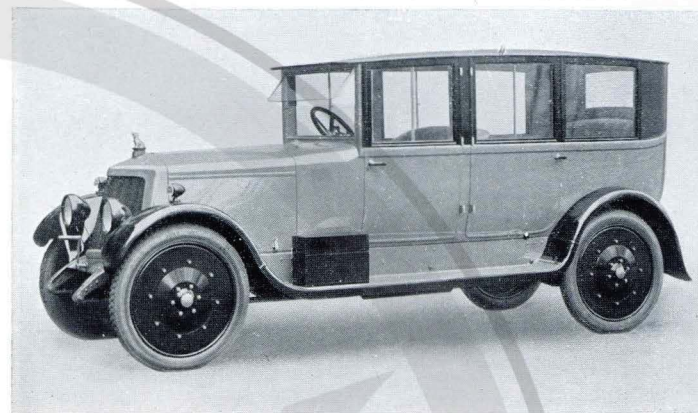
The Armstrong Siddeley 18 h.p. Open Touring Car

A medium-size Car to seat five persons comfortably. Fitted with hood and side curtains extending to windscreen, and opening with doors for protection against all weathers. Adjustable front windscreen with two planes and top half divided, windscreen wiper, M.E. 6-panel rear screen, luggage grid with protecting rail, four rubber step mats and fibre mat to front floorboards. Upholstered in first quality leather. Finished in best style throughout.

Including Clock, Speedometer, Klaxon Horn, Spare Wheel and Tyre,

30 h.p. Open Touring Car, complete
with above equipment,

You cannot buy a better Car

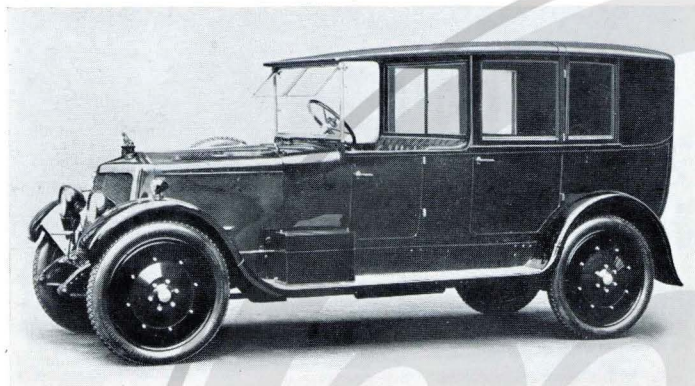


The Armstrong Siddeley 18 h.p. Saloon

A medium-size closed Car, eminently suitable for owner-driver. It accommodates four or five persons. The body is of light but strong construction. 'Drumming' is entirely absent under all conditions. Fitted with double adjustable windscreen with top half divided, windscreen wiper, luggage grid with protecting rail, four rubber step mats, fibre mat to the front floorboards and 820 x 120 m/m tyres. Luxuriously upholstered in first quality cloth or leather. Finished in best style throughout.

Including Clock, Speedometer, Klaxon Horn, Spare Wheel and Tyre,

You cannot buy a better Car

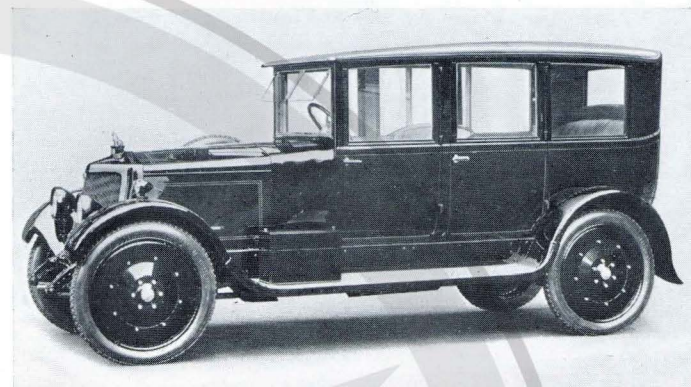


The Armstrong Siddeley 18 h.p. Landaulette

An excellent town Carriage. To seat two on main seat, two on folding seats and one beside the driver. Upholstered in first quality cloth or leather; fitted with double adjustable windscreen with top half divided, windscreen wiper, luggage grid with protecting rail, companion trays, interior electric light, parcels net, four rubber step mats, fibre mat to front floorboard and 820 x 120 m/m tyres. The leather head folds down neatly and with the minimum of overhang. Finished in best style throughout.

Including Clock, Speedometer, Klaxon Horn, Spare Wheel and Tyre,

You cannot buy a better Car



The Armstrong Siddeley 18 h.p. Enclosed Limousine

An ideal Car, equally suitable for owner-driver or chauffeur. Fitted with partition at the back of driver's seat and two auxiliary seats in interior. The body is of light but strong construction. 'Drumming' is entirely absent under all conditions. Luxuriously upholstered in first quality cloth or leather, and fitted with double adjustable windscreen with top half divided, windscreen wiper, luggage grid with protecting rail, four rubber step mats, fibre mat to front floorboards and 820 x 120 m/m tyres. Finished in best style throughout.

Including Clock, Speedometer, Klaxon Horn, Spare Wheel and Tyre,

The above design can also be supplied as an Enclosed Landaulette, i.e. with automatic folding head from the rear door pillar,

You cannot buy a better Car

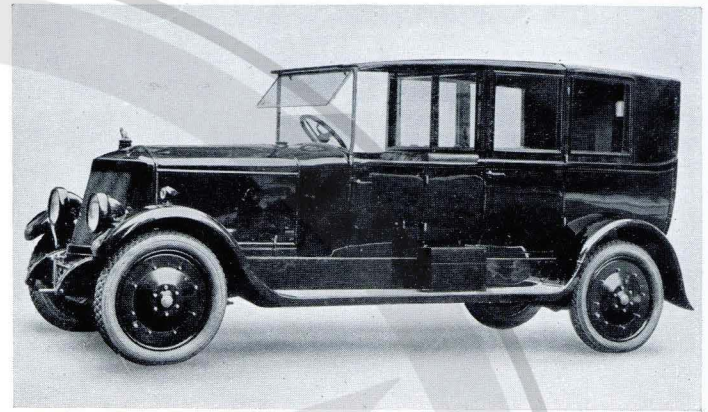
Specification of 30 h.p. Chassis

DIMENSIONS:	Wheelbase, 11 ft. 3 ins. Track, 4 ft. 8 ins.
FRAME:	Overall length, 15 ft. 4 ins. Overall width, 5 ft. 8 ins. Special design. Very deep side members, with step-boards riveted thereto, thus ensuring great rigidity.
ENGINE:	Six-cylinder, 3.5 ins. bore 5.25 ins. stroke. R.A.C. Rating 29.5 h.p. Two 3-cylinder castings with aluminium water-jacket covers. Overhead valves. Valve gear completely enclosed. Magneto ignition. Claudel Hobson of special design to suit engine.
CARBURETTOR:	Constructed in one unit. Gear-box in centre of chassis attached by torque tube to rear axle. Drive by spiral bevel wheel.
GEAR-BOX & REAR AXLE:	With 3.75 to 1 reduction in rear axle the ratios are: 1st speed, 12.6; 2nd speed, 6.1; 3rd speed, 3.75 (direct).
GEARING:	H type. Centre line of swivel-pin passes through point of contact of tyre with ground. Designed to ensure easy steering and to eliminate wear.
FRONT AXLE:	Worm and wheel mounted on ball bearings.
STEERING:	Front: Semi-elliptical. Rear: Cantilever, with shackles adjustable to suit load. All springs enclosed in gaiters.
SPRINGS:	Special disc wheels, one spare rim. Five 32 ins. x 4½ ins. Dunlop straight sided cord tyres.
WHEELS & TYRES:	Two independent internal brakes acting in drums integral with rear disc wheels. The brake shoes are fabric lined, 17½ ins. diameter, giving easy action and large wearing surface. Central hand-brake lever.
BRAKES:	Radiator situated in front of engine. Circulation by centrifugal pump. Cooling fan integral with fly-wheel.
COOLING:	Gravity feed. Capacity, 14 gallons, with special compartment, holding two gallons in reserve, controlled from dash.
PETROL TANK:	The chassis is equipped with step-boards, wings, engine-starter and electric lighting complete with five lamps.

PRICE OF CHASSIS

Including Clock, Speedometer, Electric Klaxon Horn, Spare Wheel and Tyre,

Front wheel brakes can be supplied at an extra cost of



The Armstrong Siddeley 30 h.p. Landaulette

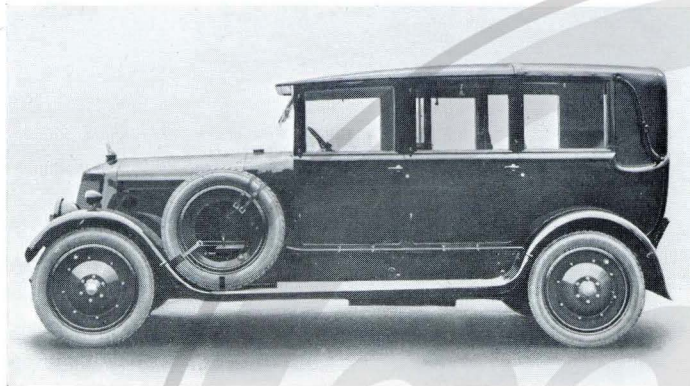
Of elegant and dignified appearance. To seat three on main seat, two on folding seats, and one beside the driver. Upholstered in first quality cloth or leather; fitted with companion trays, interior electric light, parcels net, double adjustable windscreen with top half divided, windscreen wiper, luggage grid with protecting rail, four rubber step mats and fibre mat to the front floorboards. Door windows and quarter lights of frameless glass with automatic lifting device. The leather head folds down neatly with the minimum of overhang. Finished in best style throughout.

Including Clock, Speedometer, Klaxon Horn, Spare Wheel and Tyre,

Front Wheel Brakes can be fitted at an extra cost of

You cannot buy a better Car

You cannot buy a better Car



The Armstrong Siddeley 30 h.p. Enclosed Landaulette

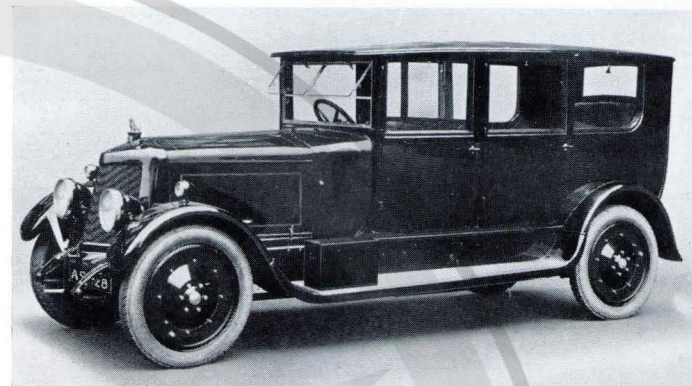
SPECIAL COACHWORK

A very handsome Car, suitable for town or country use. Fitted with four doors, the front portion being entirely enclosed so as to provide complete protection for the passengers on the front seat. All drop windows are fitted with automatic lifting device and are of frameless glass. Fitted with double adjustable windscreen with top half divided, windscreen wiper, two folding seats, companion trays, interior electric light, parcels net, luggage grid with protecting rail, four rubber step mats and fibre mat to the front floorboards. The leather head folds down neatly with the minimum of overhang. Luxuriously upholstered and finished in best style throughout.

Including Clock, Speedometer, Klaxon Horn, Spare Wheel & Tyre,

Front wheel brakes can be supplied at an extra cost of

You cannot buy a better Car



The Armstrong Siddeley 30 h.p. Enclosed Limousine

SPECIAL COACHWORK

A Car of elegant appearance and perfect comfort. Fitted with four doors : entirely enclosed with a partition behind the driver's seat. To seat three on main seat, two on folding seats, and one beside the driver. Luxuriously upholstered in first quality cloth or leather; fitted with double adjustable windscreen with top half divided, windscreen wiper, companion trays, interior electric light, parcels net, luggage grid with protecting rail, four rubber step mats and fibre mat to the front floorboards. All drop windows are fitted with automatic lifting device and are of frameless glass. Finished throughout in best style.

Including Clock, Speedometer, Klaxon Horn, Spare Wheel & Tyre,

Front wheel brakes can be supplied at an extra cost of

You cannot buy a better Car

FULL PRICE LIST of ARMSTRONG SIDDELEY SIX CYLINDER CARS

THE EIGHTEEN H.P.

R.A.C. Rating 17.9 h.p.

£

Chassis { including Clock, Speedometer, Electric Klaxon Horn, }
 { Spare Wheel and Tyre }

5-Seater Open Touring Car, completely equipped (including rear screen, luggage grid, etc.)

Saloon

Landaulette

Enclosed Limousine (including partition and extra seats)

Enclosed Landaulette (including partition and extra seats)

THE THIRTY H.P.

R.A.C. Rating 29.5 h.p.

£

Chassis { including Clock, Speedometer, Electric Klaxon Horn, }
 { Spare Wheel and Tyre }

5-Seater Open Touring Car, completely equipped (including rear screen, luggage grid, etc.)

Landaulette

Limousine

Enclosed Limousine (Special Coachwork)

Enclosed Landaulette (" ")

⌚ Front wheel brakes can be supplied to 30 h.p. model at an extra cost of

You cannot buy a better Car

AT YOUR SERVICE

OUR INTEREST in each Armstrong Siddeley 6-Cylinder Car continues throughout its life. We wish every owner to enjoy the greatest possible satisfaction from its use; that its highest efficiency may be always maintained.

For the purpose of affording to all our customers means of obtaining reliable advice concerning their cars, together with an efficient Maintenance and Repair Service, we have established Service Depots at the addresses shown below.

These Depots are at the entire disposal of our customers. Each takes the form of a small self-contained Works, staffed with trained mechanics, thoroughly equipped, and in intimate touch with our main Works.

COVENTRY: Parkside.

Phone: Coventry 954. Wires: 'Sidarm Coventry.'

LONDON: Church Street, Lisson Grove, N.W.8.

Phone: Padd. 3451-2. Wires: 'Sidarm Padd. London.'

MANCHESTER: Gt. Northern Garage, Watson St.

Phone: Manchester City 6362. Wires: 'Sidarm Manchester.'

LEEDS: Grant Avenue, Roundhay Road.

Phone: Leeds 24909. Wires: 'Sidarm Leeds.'

NEWCASTLE: Scotswood.

Phone: Newcastle Cent. 3061. Wires: 'Sidarm Newcastle.'

BRISTOL: Filton.

Phone: Filton 8. Wires: 'Sidarm Filton.'

GLASGOW: Hughenden Road, Kelvinside.

Phone: Glasgow Western 4144. Wires: 'Sidarm Glasgow.'