

A TESTIMONIAL.

BANBRIDGE,

CO. DOWN.

February 26th, 1916.

MESSRS. HUMBER LIMITED, COVENTRY.

Dear Sirs,—Since writing you in August about my 10 h.p. Humber (1915), I have covered about 3,500, making altogether nearly 5,000 miles since I got the car in May last.

As you will understand my car has to travel in all sorts of weather over all sorts of roads and at any time of the day or night, and consequently what one in my profession requires most is reliability.

I have not had an involuntary stoppage except once, when the auzer in the petrol supply pipe got choked up with dirt, and on another occasion from a punctured tyre—the only puncture I have had yet.

Then the car is so well-equipped, that with a genuine one-man hood and splendid electric lighting, I can always turn out on the road in a few seconds, independent of help from anyone. The mud wings are so broad and well extended that it is about the cleanest running car to be seen anywhere. It is well upholstered, well sprung, runs quietly, is economical in tyres and petrol, and very comfortable to drive in, and in fact it is just as good as it looks, which is saying a great deal. It is an ideal car for a doctor who does his own driving, and who requires reliability, comfort, protection in all weathers, and low running expenses.

Yours faithfully,

W. N. MCWILLIAM, M.D.



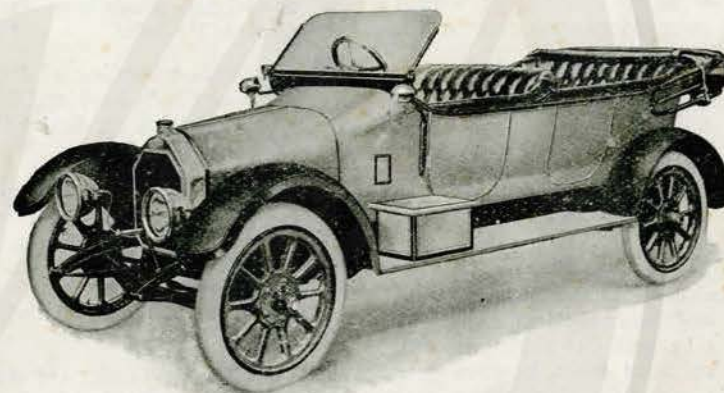
ALL PREVIOUS LISTS CANCELLED.



Humber

10 h.p. 4 - SEATED CAR

1919



HUMBER LIMITED,

Telephone :
522 COVENTRY.

Registered Offices and Works :
COVENTRY.

Telegrams :
HUMBER, COVENTRY.

DEPOTS:

LONDON:
32, HOLBORN VIADUCT, E.C.
SOUTHAMPTON
25 & 27, LONDON ROAD.
London Repair Works
CANTERBURY ROAD, KILBURN, N.W. 1298 & 1299 Willesden.

Telephones :
166 & 167 Holborn.
1070.

Telegrams :
Humber, London.
Humber, Southampton
Humberonia, London

AGENTS EVERYWHERE.

1920 1919 1918 1917 1916
(550) (341) (270) (250)

Specification of the

10 h.p. 4 - Seated Humber Car.

Wheelbase—8ft. 9½in.

Track—4 ft. 7in.

Motor—Four cylinders, monobloc ; 65 m/m bore x 120 m/m stroke.

Lubrication—By gear pump and troughs, connecting rods fitted with dipers. An oil level gauge and removable filter are fitted to the oil sump. The bottom half of the crank chamber is extended round the flywheel and gear box and so forms a unit construction.

Ignition—High tension magneto.

Carburettor—Smith's four-jet Automatic type.

Petrol Tank—Placed in dashboard, gravity feed ; fitted with tap and filter.

Cooling—Thermo-syphon.

Transmission—Humber enclosed leather-faced cone clutch, running in oil ; propeller shaft with two universal joints between gear box and live axle.

Change Speed Gear—Four forward speeds and one reverse. Direct drive on top gear ; gate change mounted on gear box, with lever inside body. Gear box designed to permit easy removal of gears.

Gear Ratios—1st speed 15.35 to 1. 2nd speed 9.22 to 1. 3rd speed 6.11 to 1. 4th speed (direct) 4.33 to 1.

Back Axle—Of the "live" type, driven by bevel gearing.

Front Axle—Of "H" section drop forged steel ; wheels mounted on ball bearings and fitted with thrust washers.

Engine Control—Ignition and throttle levers conveniently placed under the steering wheel. Foot accelerator operating throttle, working in conjunction with, but independently of, hand lever. Both the clutch withdraw and accelerator pedals are fitted direct to the unit.

Brakes—Internal expanding of large diameter ; both hand and foot brake operating on back axle. Lever inside body.

Frame—Pressed steel, engine and gear box unit carried on front and intermediate cross members.

Springs—Half-elliptical to both front and rear axles ; nearly flat when loaded.

Wheels and Tyres—Detachable steel artillery type, fitted with 760 x 90 m/m Dunlop heavy plain tyres.

Body—Double phaeton streamline, to seat four, fitted with four doors.

Colour—Humber stone - grey, black wings. Extra charge for other colours.

Equipment—Dynamo lighting set and self-starter, one-man hood, side curtains, screen, horn, spare wheel with tyre, and kit of tools.

TERMS OF BUSINESS.

GENERAL.—The price given in this leaflet is for net cash on delivery at our works.

Cheques and Post Office Orders should be made payable to HUMBER LTD., and sent to HUMBER LTD., COVENTRY.

WARRANTY.—We give below the following Warranty with all goods supplied, repairs done and replacements by us, instead of the Warranty implied by Common Law, Statute, or otherwise, as to the quality or fitness for their purpose of the goods, repairs or replacements, every such implied Warranty being in all cases excluded.

We warrant that all precautions which are usual and reasonable have been taken by us to secure excellence of materials and workmanship. This warranty shall be in force for one year only from the date of delivery by us of the goods sold, repaired, or replaced by us, and the damages for which we shall be responsible shall be limited to the cost of the requisite repairs or replacements. This Warranty shall not apply to defects caused by wear and tear, accident, misuse, or neglect. The term "Goods" shall be construed as including all new vehicles or parts thereof or replacements. We give no Warranty in respect of second-hand goods sold by us, nor shall any such Warranty be implied.

All agreements and quotations by us to supply goods, execute repairs, or make replacements shall be deemed to include the above Warranty and the exclusion of all implied Warranties.

CONDITIONS OF WARRANTY.—If a defective part be found in any goods, it must be sent to us, carriage paid, and accompanied by an intimation from the sender in writing that he desires to have it repaired, or replaced, free of charge under this Warranty, and he must also furnish us at the same time with the number of the vehicle (if any) and the name of the dealer (if any) from whom he purchased it, with the date of purchase, or the date when the repairs were executed, or replacements made, as the case may be.

Failing compliance with the above conditions, goods received by us will lie at the risk of the senders, and this Warranty shall not be enforceable.

We only warrant goods bought direct from us, or from one of our duly authorised dealers.

We do not warrant the specialities of other firms, such as tyres, electric fittings, lamps and horns, although supplied by us. We endeavour to secure the best quality in these articles, and the Makers, whose names usually appear thereon, are generally willing to replace any defective part, and we shall be pleased at all times to furnish the Maker's name and address.

REPAIRS & REPLACEMENTS.—All parts sent for repair or replacement must be forwarded carriage paid, and bear the sender's name and address ; the machine number and year of manufacture should also be given.

Cars which are sent for repair will only be driven by our employees at the risk and responsibility of the owners. Repairs of Cars are undertaken only on the assumption that the owners give us authority to drive the Cars on their behalf.

DEALERS.—Dealers who act as our agents are not authorised to act on our behalf by advertising or otherwise incurring debts or transacting business for us ; nor are they authorised to give any warranty or make any representation on our behalf.

ALTERATIONS IN PRICE.—We reserve the right to alter the price and terms stated at any time without notice, and all cars are subject to prices and conditions ruling at time of delivery. Any advance in the list price of tyres will be charged extra.

EXHIBITIONS.—Motor goods are only supplied by us on condition that same are not to be exhibited by any person, or firm, or Company at any Exhibition or Show held in the United Kingdom other than any Exhibition or Show held or approved by the Society of Motor Manufacturers and Traders Limited for Exhibition of Motor goods by its Bond Signers. Any breach of this provision shall render the purchaser liable to indemnify us in respect to our liability to the Society to pay such damages, not exceeding £250, as the Committee (or on appeal the Council) of the Society may award.

Price - - £630.