

High Mileage—Low Repairs.

4, NEWGATE STREET,
CHESTER,

22nd December, 1915.

DEAR SIRs,

We have just completed a mileage of 5,000 on the 14 h.p. car you supplied us with in February last, and desire to express our appreciation of the manner in which the car has done its work.

It has consumed on the average one gallon of petrol to $22\frac{1}{2}$ miles, and by no means under ideal conditions. On long journeys we can do 25 miles to the gallon. The car ran 770 miles on one gallon of lubricating oil. The tyres are in excellent condition, considering the types of roads we have used them on. Our repair bill has been four shillings.

You may make what use you like of this unsolicited testimonial.

Yours faithfully,

(Signed) W. H. NIGHTINGALE & SON.

Humber Limited Printing Department, Coventry.—2248

C. F. DINGWALL.



ALL PREVIOUS LISTS CANCELLED.

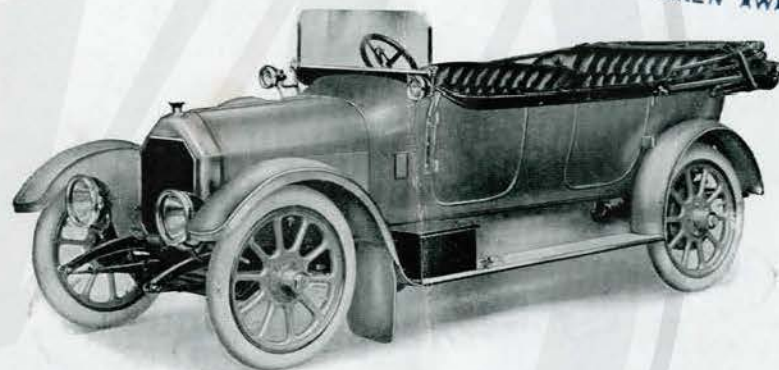


Humber

14 h.p. 5-SEATED CAR

1919

PROPERTY OF THE
ROYAL AUTOMOBILE CLUB LIBRARY
NOT TO BE TAKEN AWAY



HUMBER LIMITED,

Telephone :
522 COVENTRY.

Registered Offices and Works :
COVENTRY.

Telegrams :
HUMBER, COVENTRY.

DEPOTS:

LONDON :
32, HOLBORN VIADUCT, E.C.
SOUTHAMPTON
25 & 27, LONDON ROAD.
London Repair Works
CANTERBURY ROAD, KILBURN N.W. 1298 & 1299 Willesden.

Telephones :
166 & 167 Holborn.
1070.

Telegrams :
Humber, London.
Humber, Southampton
Humberonia, London

AGENTS EVERYWHERE.

Specification of the

14 h.p. Five-Seated Humber Car.

Wheelbase—9 ft. 5 in.

Track—4 ft. 9 in.

Motor—Four cylinders, monobloc; 75 m/m bore x 140 m/m stroke.

Lubrication—All bearings are automatically lubricated, oil being forced through crankshaft by a rotary pump driven by the engine, with indicator on the dashboard.

Ignition—High tension magneto.

Carburettor—Smith's four-jet Automatic type.

Petrol Tank—Placed in dashboard, gravity feed; fitted with tap and filter.

Cooling—Thermo-syphon.

Transmission—Humber enclosed leather-faced cone clutch, running in oil; universal jointed propeller shaft between gear box and live axle.

Change Speed Gear—Four forward speeds and reverse. Direct drive on top gear; gate change operated by one lever placed inside door.

Gear Ratios—1st speed 14.44 to 1. 2nd speed 8.92 to 1. 3rd speed 6.35 to 1. 4th speed (direct) 4.33 to 1.

Back Axle—Of the "live" type, driven by bevel gearing.

Front Axle—Of "H" section; wheels mounted on roller bearings.

Engine Control—Ignition and throttle levers conveniently placed on top of steering wheel. Foot accelerator operating throttle, working in conjunction with, but independently of, hand lever.

Steering—Worm and sector type, fitted with ball bearings.

Brakes—Internal expanding of large diameter; both hand and foot brake operating on back axle. Lever inside body.

Frame—Pressed steel, upswept over rear axles; engine and gear box carried on a sub-frame.

Springs—Half-elliptical to both front and rear axles.

Wheels and Tyres—Detachable steel artillery type, fitted with 815 x 105 m/m Dunlop heavy plain tyres.

Body—Double phaeton streamline, to seat five.

Colour—Humber stone-grey, black wings. Extra charge for other colours.

Equipment—C.A.V. Dynamo lighting set and self-starter, one-man hood, side curtains, screen, electric horn, spare wheel with tyre, kit of tools, and luggage carrier.

TERMS OF BUSINESS.

GENERAL—The price given is for net cash on delivery at our works.

Cheques and Post Office Orders should be made payable to HUMBER LTD., and sent to HUMBER LTD., COVENTRY.

WARRANTY—We give below the following Warranty with all goods supplied, repairs done and replacements by us, instead of the Warranty implied by Common Law, Statute, or otherwise, as to the quality or fitness for their purpose of the goods, repairs or replacements, every such implied Warranty being in all cases excluded.

We warrant that all precautions which are usual and reasonable have been taken by us to secure excellence of materials and workmanship. This warranty shall be in force for one year only from the date of delivery by us of the goods sold, repaired, or replaced by us, and the damages for which we shall be responsible shall be limited to the cost of the requisite repairs or replacements. This Warranty shall not apply to defects caused by wear and tear, accident, misuse, or neglect. The term "Goods" shall be construed as including all new vehicles or parts thereof or replacements. We give no Warranty in respect of second-hand goods sold by us, nor shall any such Warranty be implied.

All agreements and quotations by us to supply goods, execute repairs, or make replacements shall be deemed to include the above Warranty and the exclusion of all implied Warranties.

CONDITIONS OF WARRANTY—If a defective part be found in any goods, it must be sent to us, carriage paid, and accompanied by an intimation from the sender in writing that he desires to have it repaired or replaced free of charge under this Warranty, and he must also furnish us at the same time with the number of the vehicle (if any) and the name of the agent (if any) from whom he purchased it, with the date of purchase, or the date when the repairs were executed, or replacements made, as the case may be.

Failing compliance with the above conditions, goods received by us will lie at the risk of the senders, and this Warranty shall not be enforceable.

We only warrant goods bought direct from us, or from one of our duly authorised Agents.

We do not warrant the specialities of other firms, such as tyres, electric fittings, lamps and horns, although supplied by us. We endeavour to secure the best quality in these articles, and the Makers, whose names usually appear thereon, are generally willing to replace any defective part, and we shall be pleased at all times to furnish the Maker's name and address.

REPAIRS & REPLACEMENTS—All parts sent for repair or replacement must be forwarded carriage paid, and bear the sender's name and address; the machine number and year of manufacture should also be given.

Cars which are sent for repair will only be driven by our employees at the risk and responsibility of the owners. Repairs of Cars are undertaken only on the assumption that the owners give us authority to drive the Cars on our behalf.

THE TERM "AGENT"—The term "Agent" is used in a complimentary sense only, and those firms whom we style our agents are not authorised to act on our behalf by advertising or otherwise incurring debts or transacting business for us; nor are they authorised to give any warranty or make any representation on our behalf.

ALTERATIONS IN PRICE—We reserve the right to alter the price and terms stated at any time without notice, and any advance in the list price of tyres will be charged extra.

EXHIBITIONS—Motor goods are only supplied by us on condition that same are not to be exhibited by any person, or firm, or Company at any Exhibition or Show held in the United Kingdom other than any Exhibition or Show held or approved by the Society of Motor Manufacturers and Traders Limited for Exhibition of Motor goods by its Bond Signers. Any breach of this provision shall render the purchaser liable to indemnify us in respect to our liability to the Society to pay such damages, not exceeding £250, as the Committee (or on appeal the Council) of the Society may award.

Price - - £600.