

## TERMS OF BUSINESS.

**GENERAL.**—The prices given in this leaflet are for net cash on delivery at our works. Cheques and Post Office Orders should be made payable to HUMBER LTD., and sent to HUMBER LTD., COVENTRY.

**WARRANTY.**—We give below the following Warranty with all goods supplied, repairs done and replacements by us, instead of the Warranty implied by Common Law, Statute, or otherwise, as to the quality or fitness for their purpose of the goods, repairs or replacements, every such implied Warranty being in all cases excluded.

We warrant that all precautions which are usual and reasonable have been taken by us to secure excellence of materials and workmanship. This Warranty shall be in force for one year only from the date of delivery by us of the goods sold, repaired, or replaced by us, and the damages for which we shall be responsible shall be limited to the cost of the requisite repairs or replacements. This Warranty shall not apply to defects caused by wear and tear, accident, misuse, or neglect. The term "Goods" shall be construed as including all new vehicles or parts thereof or replacements. We give no Warranty in respect of second-hand goods sold by us, nor shall any such Warranty be implied.

All agreements and quotations by us to supply goods, execute repairs, or make replacements shall be deemed to include the above Warranty and the exclusion of all implied Warranties.

**CONDITIONS OF WARRANTY.**—If a defective part be found in any goods, it must be sent to us, carriage paid, and accompanied by an intimation from the sender in writing that he desires to have it repaired or replaced free of charge under this Warranty, and he must also furnish us at the same time with the number of the vehicle (if any) and the name of the dealer (if any) from whom he purchased it, with the date of purchase, or the date when the repairs were executed, or replacements made, as the case may be. Failing compliance with the above conditions, goods received by us will lie at the risk of the senders, and this Warranty shall not be enforceable.

We only warrant goods bought direct from us, or from one of our duly authorised dealers.

We do not warrant the specialities of other firms, such as tyres, electric fittings, lamps and horns, although supplied by us. We endeavour to secure the best quality in these articles, and the makers, whose names usually appear thereon, are generally willing to replace any defective part, and we shall be pleased at all times to furnish the maker's name and address.

**REPAIRS & REPLACEMENTS.**—All parts sent for repair or replacement must be forwarded carriage paid, and bear the sender's name and address; the car number and year of manufacture should also be given. Cars which are sent for repair will only be driven by our employees at the risk and responsibility of the owners. Repairs of Cars are undertaken only on the assumption that the owners give us authority to drive the Cars on their behalf.

**DEALERS.**—Those firms whom we style our Dealers are not authorised to act on our behalf by Advertising or otherwise incurring debts or transacting business for us; nor are they authorised to give any Warranty or make any representation on our behalf.

**ALTERATIONS IN PRICE.**—We reserve the right to alter the price and terms stated at any time without notice, and all Cars are subject to prices and conditions ruling at time of delivery. Any advance in the list price of tyres will be charged extra.

**EXHIBITIONS.**—Motor goods are only supplied by us on condition that same are not to be exhibited by any person, or firm, or Company at any Exhibition or Show held in the United Kingdom other than any Exhibition or Show held or approved by the Society of Motor Manufacturers and Traders Limited for Exhibition of Motor goods by its Bond Signers. Any breach of this provision shall render the purchaser liable to indemnify us in respect to our liability to the Society to pay such damages, not exceeding £250, as the Committee (or on appeal the Council) of the Society may award.

Humber Limited Printing Department, Coventry.—4240

**C. F. DINGWALL.**

**10 H.P. 2/3 & 4 SEATER**

**Humber**

PROPERTY OF THE  
ROYAL AUTOMOBILE CLUB LIBRARY  
NOT TO BE TAKEN AWAY

**CARS.**

**HUMBER LIMITED,**  
Registered Offices & Works: **COVENTRY.**

Telegrams: "HUMBER, COVENTRY."

Telephone No. 522.

### DEPOTS:

LONDON	...	...	32, Holborn Viaduct, E.C.
Telephone No: 166 & 167 Holborn.			Telegrams: "Humber, London."
LONDON SERVICE DEPOT	...	...	Canterbury Road, Kilburn, N.W.
Telephone No.: 1298 & 1299 Willesden.			Telegrams: "Humberonia, London."
SOUTHAMPTON	...	...	27, London Road.
Telephone No.: 1070			Telegrams: "Humber, Southampton."

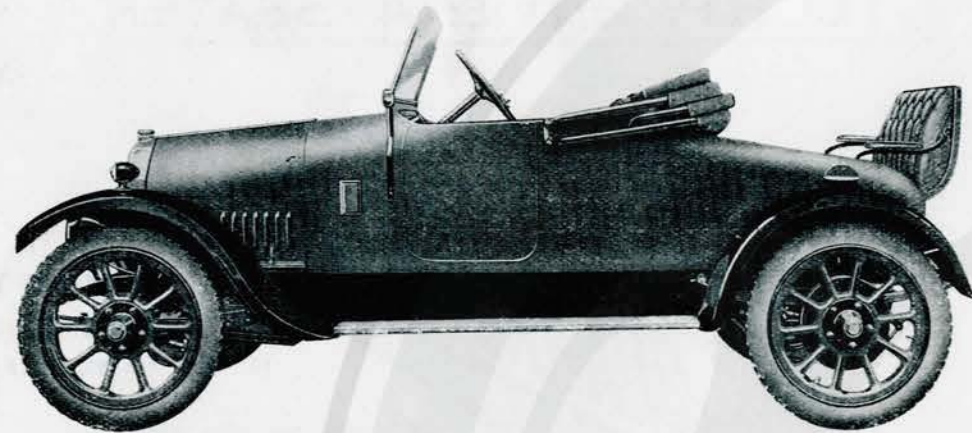
**DEALERS EVERYWHERE**

1919-1920.



# C. F. DINGWALL.

## SPECIFICATION.

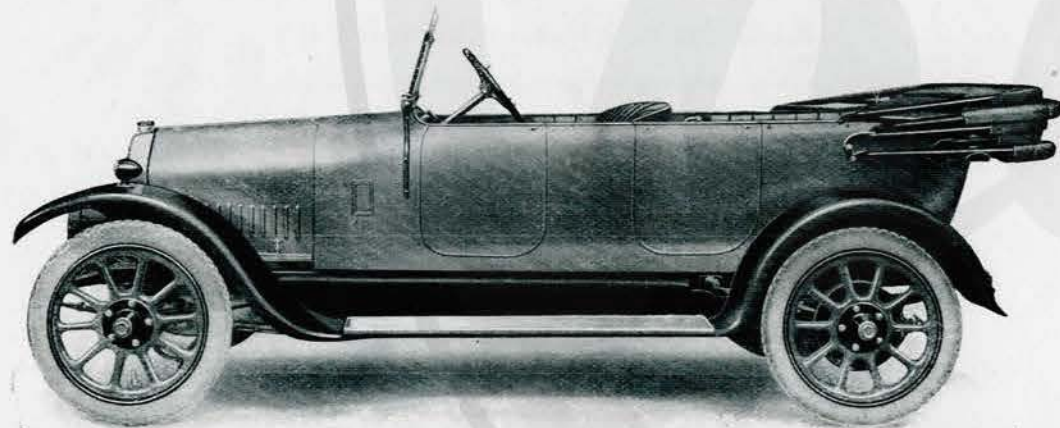


**10 h.p. 2/3 Seater Humber Car.**

**(R.A.C. RATING 11.3 H.P.)**

Double-Phaeton streamline design, luxuriously upholstered with first selection hand buffed leather covering, fitted with a first-class comfortable double dickey seat with armrests enclosed in a spacious boot. Fully equipped ready for the road.

Price - - - - £660



**10 h.p. 4 Seater Humber Car.**

**(R.A.C. RATING 11.3 H.P.)**

Double-Phaeton streamline design, luxuriously upholstered with first selection hand buffed leather covering. Beautifully finished and much in demand. Fully equipped ready for the road.

Price - - - - £700

All quotations, orders, and delivery promises are without engagement or responsibility, and all goods will be charged at prices current at time of delivery.

**Wheelbase**—8ft. 9½in.

**Track**—4ft. 7in.

**Motor**—Four cylinders, monobloc; 68 m/m bore, 120 m/m stroke, detachable head.

**Capacity**—1743 c.c.

**R.A.C. Rating**—11.3.

**Lubrication**—By gear pump and troughs, connecting rods fitted with dippers. An oil level gauge and removable filter are fitted to the oil sump. The bottom half of the crank chamber is extended round the fly-wheel and gearbox and so forms a unit construction.

**Ignition**—High tension magneto.

**Carburettor**—Cox Atmos with air strangler controlled from dash. Extremely simple to set and adjust.

**Petrol Tank**—Placed in dashboard, gravity feed; fitted with tap and filter; capacity nine gallons.

**Cooling**—Thermo-syphon.

**Transmission**—Humber enclosed leather-faced cone clutch, running in oil; propeller shaft with two universal joints between gear and live axle.

**Change Speed Gear**—Four forward speed and one reverse. Direct drive on top gear; gate change mounted on gearbox, with lever inside body. Gearbox designed to permit easy removal of gears.

**Gear Ratios**—First speed 15.33 to 1; second speed 9.22 to 1; third speed 6.11 to 1; fourth speed (direct) 4.33 to 1.

**Back Axle**—Of the "live" type driven by bevel gearing.

**Front Axle**—Of "H" section drop forged steel; wheels mounted on ball bearings and fitted with thrust washers.

**Engine Control**—Ignition and throttle levers conveniently placed on top of steering wheel. Foot accelerator operating throttle, working in conjunction with, but independently of, hand lever.

**Brakes**—External contracting steel band lined with Ferodo, provided with hand adjustment. Foot brake is mounted on the gearbox mainshaft, hand brake lever operates compensated brakes of large diameter on the rear wheels.

**Frame**—Pressed steel, engine and gear box unit carried on front and intermediate cross members.

**Springs**—Half-elliptical to both front and rear axles; nearly flat when loaded.

**Wheels and Tyres**—Detachable steel artillery type, fitted with 760 x 90 m/m Dunlop Magnum tyres.

**Body**—Streamline. Luxuriously upholstered with first selection hand buffed leather covering. A first-class comfortable double dickey seat with armrests is enclosed in a spacious boot on the two seater model.

**Colour**—Mole, black wings and mouldings. We are prepared to finish either model in royal blue or Humber green, whichever colour may be desired, without extra charge.

**Lighting and Starting**—Lucas single unit dynamotor, integral with power units driven by enclosed silent chain. Starting switch fitted in an accessible position on fascia board, battery under rear floor board.

**Equipment**—Improved one-man hood fitted, secured in its open and closed positions by quick release clips, side curtains, screen, speedometer, electric horn, spare wheel and tyre, complete kit of tools.

Tools fitted in lower part of front door:—Jack, handle, brace, etc., and oil-can fitted under bonnet.