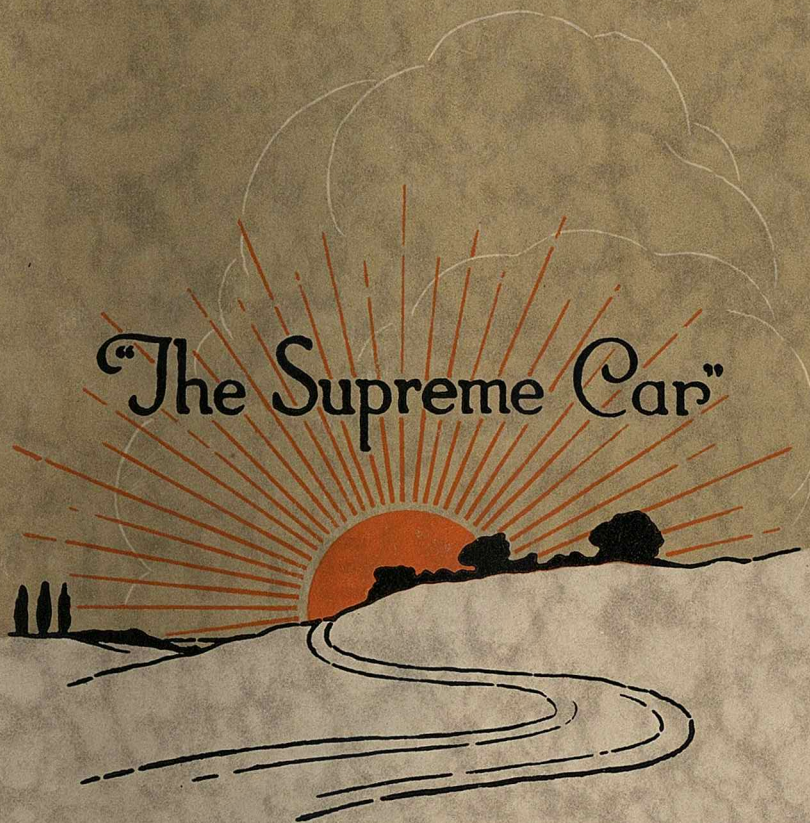


600

SUNBEAM

"The Supreme Car"

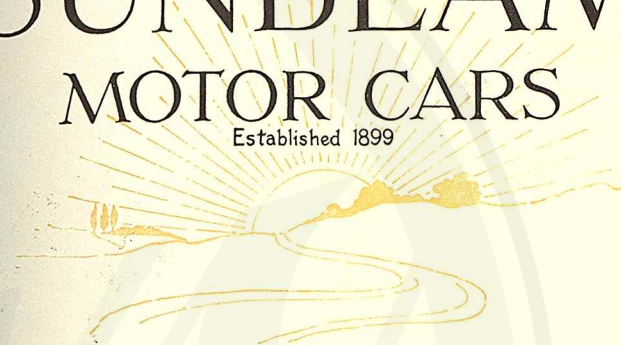


Where Cars are required for use overseas

we supply special models embodying certain modifications to suit the arduous conditions under which cars are used. Full particulars will be supplied by our Export Department, 12 Princes Street, Hanover Square, London, W.1. and we recommend clients who intend taking their cars abroad to acquaint us of this fact at the time of placing their orders.

SUNBEAM MOTOR CARS

Established 1899



THE SUNBEAM MOTOR CAR Co. Ltd.

Manufacturers of

**MOTOR CARS, AIRCRAFT & MARINE
MOTORS, AIRSHIP POWER PLANTS etc.**

CONTRACTORS TO ADMIRALTY, WAR OFFICE, AIR
MINISTRY AND TO COLONIAL AND FOREIGN
GOVERNMENTS.



MOORFIELD WORKS, WOLVERHAMPTON

Telegrams "Moorfield, Wolverhampton."

Telephone : Wolverhampton 985

LONDON SHOWROOMS AND EXPORT DEPARTMENT
12, Princes Street, Hanover Square, W.1.

Showrooms—Telegrams : "Sunosales, Wesdo, London." Telephone : Mayfair 6280/1

Export Dept.—Cables : "Subeamoco, London." Telephone : Mayfair 2919

Codes used : A.B.C. 5th Edition, Marconi International, Motor Trade, Bentley's

Southern Service and Repair Works: 177, The Vale, Acton, London, W.3.

Telegrams : "Sunoserv, Act. London." Telephone : Chiswick 800

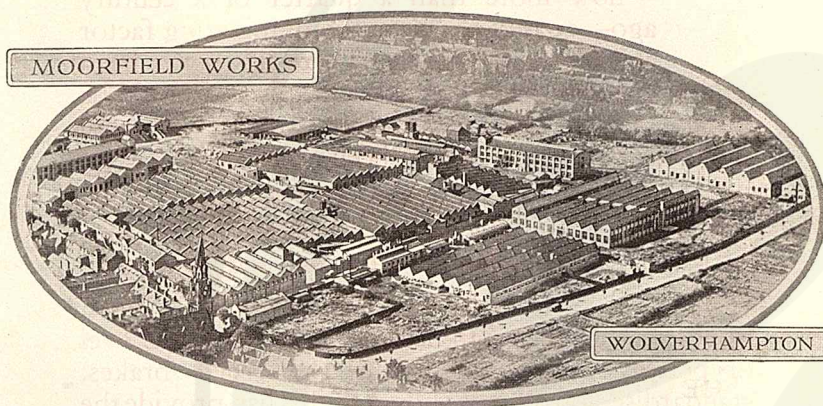
MANCHESTER SHOWROOMS - 106, Deansgate

Telegrams : "Sumocar, Manchester." Telephone : City 8638

**Northern Service and Repair Works: 288/294, Eccles New Road, Weaste,
Manchester**

Telegrams : "Sumorep, Manchester" Telephone : 507/8 Pendleton.

THE HOME OF THE SUNBEAM CAR



The Factory, Offices, Playing Fields, and other property of the Sunbeam Motor Car Co., Ltd.

THERE are very few plants devoted to the manufacture of motor cars so extensive or as self-contained as the works wherein Sunbeam cars are produced. The factory, offices, adjoining playing fields, etc., cover an area of over 60 acres, the floor space alone of the various buildings being nearly 30 acres.

The employees number nearly 4,000.

Moorfield Works possesses every conceivable facility for the production of motor cars of the high quality which has always been associated with the Sunbeam name.

The Sunbeam Company gladly welcomes visits from owners or potential owners of Sunbeam cars, so that they may personally see the extent of the Works, and the thoroughness of the manufacturing methods employed.

Foreword

FROM the very inception of the Sunbeam car—now more than a quarter of a century ago—quality has been the dominating factor at Moorfield Works. There has never been any attempt to see how cheaply cars could be made. Quality first and foremost is the maxim from which no deviation has ever been permitted.

In the range of cars illustrated and described in the following pages, mechanical efficiency is blended with the best quality coachwork and inimitable finish.

Sunbeam engine design has reached the highest level of perfection. The Sunbeam four-wheel brakes, standardised on all cars shown in this list, provide the most thoroughly proved and reliable braking system yet devised. Cantilever rear springs are fitted to all models. In every point of design the unique experience gained over many years, both in the phenomenal successes achieved in racing on road and track and in building many thousands of high-grade cars, has been embodied.

The latest Sunbeam Models, the three-litre Super-sports and the 30/90 h.p. eight-cylinder, are supreme in their class—cars of incomparable quality of design, material and workmanship, and possessing an extraordinarily high standard of efficiency.

THE SUNBEAM MOTOR CAR CO. LTD.

April, 1926.

Some Distinguished Owners of Sunbeam Cars

H.R.H. PRINCE HENRY, K.G., G.C.V.O.
H.R.H. PRINCE NICOLAS OF ROUMANIA.
H.I.H. PRINCE CHICHIBU OF JAPAN.

Duchess of Bedford.
Duchess of Norfolk.
Lady Maud Baillie.
Countess of Cawdor.
Countess of Huntingdon.
Viscountess Harcourt.
Countess of Ilchester.
Countess of Powiss.
Viscountess Rhondda.
Lady Cholmondeley.
Lady Geraldine St. Laurence.
Lady Langford.
Lady Latymer.
Lady Strathcona and Mount Royal.
Baroness Campbell.
Hon. Lady Cook.
Hon. Lady Miller.
Lady Colthurst.
Lady Dunn.
Lady Galsworthy.
Duke of Richmond, K.G., G.C.V.O., C.B.
Marquess of Lansdowne, K.G., P.C., G.C.S.I.,
G.C.M.G., G.C.I.E.
Marquess of Blandford.
The Maharajah of Patiala.
Earl of Bradford.
Earl of Breadalbane.
Earl of Cavan, K.C., G.C.M.G., G.C.V.O., K.C.B.
Earl of Cromer, G.C.I.E., C.V.O.
Earl of Cottenham.
Earl of Dartmouth, P.C., K.C.B.
Earl of Donoughmore, K.P., P.C.
Earl of Dudley, P.C., G.C.B., G.C.M.G., G.C.V.O.
Earl of Dunraven and Mount Earl, P.C., K.P.,
C.M.G., O.B.E.
Earl of Lichfield, D.L., J.P.
Earl of Lytton, P.C., G.C.I.E.
Earl of Mansfield, D.L.
Earl of Powis, D.L., J.P.
Earl of Wemyss, G.C.B., C.M.G., M.V.O.
Earl of Wilton, R.N.
Viscount Cobham.
Viscount Combermere.
Viscount Clive.
Viscount Falmouth.
Viscount Hambleden, D.L.
Viscount Ridley.
Viscount Younger.
Lord Walter Hervey.
Admiral of the Fleet, Lord Walter Kerr, G.C.B.
Lord Aldenham, M.S., F.S.A.
Lord Ashcombe, C.B.
Lord Dawson of Penn, G.C.V.O., K.C.M.G.,
C.B., B.Sc., M.D., F.R.C.P.
Lord Dunleath, J.P.
Lord Forester, J.P.
Lord Grimthorpe.
Lord Hatherton.
Lord Leconfield.
Lord Manton.
Lord Norton, J.P., D.L.

Lord Somerleyton, P.C., G.C., V.O.
Lord Waring.
Captain The Hon. Denys Scott.
Hon. A. Dawnay.
Hon. Sir William Gervase Beckett, Bart.
Hon. Claude Hope Morley.
Captain The Hon. Harold B. Robson, B.A.
Hon. H. O. Stanley.
Sir John Emmot Barlow, Bart.
Sir Robert Bird, Bart, M.P.
General Sir William R. Birdwood, Bart., G.C.B.,
G.C.M.G., K.C.S.I., C.I.E., D.S.O., LL.D.
Sir John Brunner, Bart, J.P.
Sir David Burnett, Bart.
Lieut-Colonel Sir Arthur Churchman, Bart, J.P.
Sir Cecil Chubb, Bart., J.P.
Sir Herbert Cook, Bart., M.A., F.S.A.
Sir John Horsburgh-Porter, Bart, B.A.
Sir Emanuel Hoyle, Bart.
Sir Joseph W. Isherwood, Bart.
Sir William Jaffray, Bart., J.P.
Sir William Joynson-Hicks, Bart., M.P., P.C.
Sir Martine Lloyd, Bart., J.P.
Sir Frederick W. R. Ricketts, Bart.
Colonel Sir John Rutherford, Bart., M.P.
Sir John Herbert Vernon, Bart., J.P.
Sir George Watson, Bart.
Sir Thomas Baker.
Major-General Sir Reginald Barnes, K.C.B.,
D.S.O.
Sir James Boyton, F.S.I., F.A.I., J.P.
Sir Andrew Caird, K.B.E.
Lieut-General Sir Alexander Cobbe, V.C., K.C.B.,
K.C.S.I., D.S.O.
Sir Maurice Craig, M.D., F.R.C.P.
Major-General Sir Chas. Dobell, K.C.B., C.M.G.,
D.S.O.
Rear-Admiral Sir Sydney Eardley-Wilmot,
K.C.I.E.
Rear-Admiral Sir Reginald Hall, K.C.M.G.,
C.B., D.C.L., M.P.
Admiral Sir Herbert L. Heath, K.C.B., M.V.O.
Sir Douglas Hogg, P.C., K.C., M.P.
Sir Donald Horstall.
General Sir Archibald A. Montgomery,
K.C.M.G., C.B.
General Sir Charles Munro, G.C.B., G.C.S.I.,
G.C.M.G.
Sir Gerald du Maurier.
Sir William E. Nicholls, J.P.
Sir H. E. Nicholls.
Sir Arthur Eugene O'Neill, K.B.E.
Sir Alfred Pickford.
Sir Malcom Ramsay, K.C.B.
Sir Douglas A. Shields, M.D.
Sir Sydney Skinner.
Sir Campbell Stuart, K.B.E.
Sir Walter Townley, K.C.M.G.
Sir Aston Webb, K.C.V.O., C.B., P.R.A., R.A.
Lieut-Colonel Sir Leslie Wilson, C.M.G., D.S.O.

Prices of Sunbeam Cars

LIST OF STANDARD MODELS.

All Models illustrated in this Catalogue are equipped with Sunbeam Four-wheel Brakes.
The prices quoted are for delivery at the Company's works.

Illustrated and
described on pages

7-13	14/40 h.p. Four-cylinder Chassis	£495
	Touring Car or Two-Seater	£625
	Coupe	£750
	Weymann Saloon	£700
	Saloon	£795
	Sports Model Chassis	£555
	Sports Model Four-Seater	£690
14-17	20/60 h.p. Six-cylinder Chassis	£795
	Touring Car	£950
	Saloon	£1200
	Enclosed Limousine	£1250
	Enclosed Landaulette	£1275
18-21	30/90 h.p. Eight-cylinder Chassis (short wheel base)	£1050
	30/90 h.p. Eight-cylinder Chassis (long wheel base)	£1250
	Touring Car (short wheel base)	£1295
	Weymann Saloon (short wheel base) ..	£1425
	Enclosed Limousine (long wheel base)	£1850
	Enclosed Landaulette (long wheel base)	£1850
23-25	Three-litre Six-cylinder Chassis	£950
	Touring Car	£1125
	Weymann Saloon	£1250

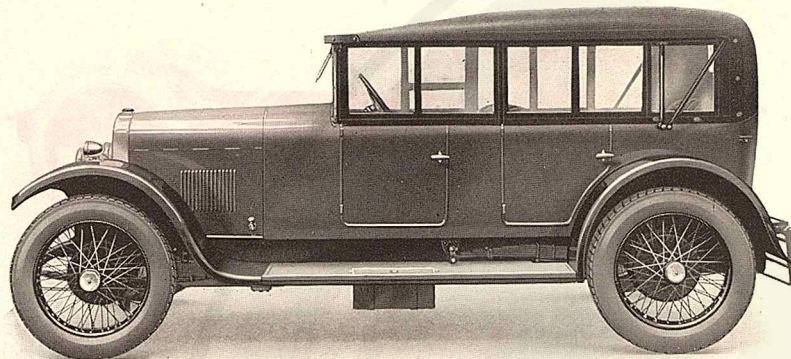
PRICE LIST OF EXTRA FITTINGS & ACCESSORIES.

	£	s.	d.		£	s.	d.
Second spare wheel (wire), without tyre, for 30/90 h.p.	4	8	0	Providing and fitting irons only for Auster screen	5	0	0
Ditto (wire) without tyre, for 20/60 h.p. or 3-litre	3	16	0	Steel Wheels in lieu of wire on 14/40 h.p. and 20/60 h.p. models	12	0	0
Ditto (wire), without tyre, 14/40 h.p.	2	17	0	Tonneau Cover	5	0	0
Auster Rear Screen (including providing and fitting irons, and fitting on 20/60 h.p. and 30/90 h.p.	20	0	0	Aluminium Number Plates	1	10	0
Ditto, 14/40 h.p.	18	0	0	Spring Gaiters, 14/40 h.p.	6	6	0
				Spring Gaiters, 20/60 h.p.	7	7	0

EXTRA CHARGES FOR TRIPLEX GLASS.

The extra charges for fitting Closed Cars with Triplex Glass are as follows :

	£	s.	d.		£	s.	d.
14/40 h.p. Coupe	25	0	0	20/60 h.p. Limousine or Landau- lette	50	0	0
14/40 h.p. Saloon	30	0	0	30/90 h.p. Limousine or Landau- lette	60	0	0
Three-litre and 14/40 h.p. Weymann Saloon	35	0	0				
20/60 h.p. Saloon	42	0	0				



All-Weather Side Curtain Equipment

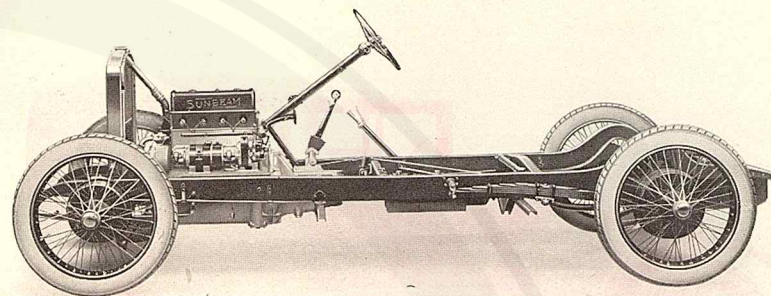
FITTED TO ALL SUNBEAM OPEN TOURING CARS.

THIS illustration shows the Sunbeam all-weather side curtain equipment. The model illustrated is a 14/40 h.p. Touring Car, but similar curtains are supplied with all Sunbeam Open Touring and Sports Model Cars.

The side curtains open with the doors, so that easy entrance and exit to the car is ensured. They can be quickly fixed in position without disturbing the passengers, and when not in use are carried in a special receptacle where they are easily accessible when required.

Another feature of Sunbeam cars is the adjustable driving seat. The seat is adjustable to give a considerable range of movement so that the position can be altered to suit the individual driver. The method of adjustment is simple and efficient. This adjustable front seat is fitted to all Open Touring, Sports, Coupé and Saloon models.

The adjustable driving seat, like numerous other features on the present-day motor car, was first introduced on Sunbeam cars.



14/40 h.p. Four-Cylinder Sunbeam

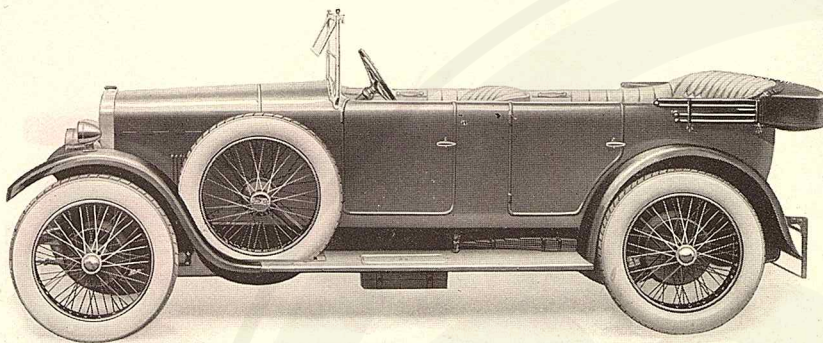
PRINCIPAL CHASSIS DIMENSIONS, ETC.

		English.	Metric.
Bore	2.95"	75 mm.
Stroke	4.72"	120 mm.
Cubic capacity of cylinders	.. 129.5 cu. in.		2120.5 c.c.
Wheel base	9' 11"	302.5 cm.
Track	4' 7"	140 cm.
Ground clearance	8"	20 cm.
Length overall	13' 10"	421.6 cm.
Width overall	5' 8½"	174 cm.
Front of dash to centre of rear axle	7' 1½"	217.8 cm.
Chassis width	2' 9½"	85 cm.
Gear Ratios (Open and Sports Models)	3rd 2nd 1st Reverse	4.72 to 1 8.55 to 1 18.7 to 1 18.7 to 1	
Gear Ratios (Closed Models)	3rd 2nd 1st Reverse	5 to 1 9.04 to 1 19.75 to 1 19.75 to 1	
Tyre sizes	815 X 105 mm.
R.A.C. Rating	13.9
Tax payable	£14

Chassis Price: £495

Price of chassis includes front wings ; fuel tank ; four detachable wheels and one spare wheel, with tyres ; electric starter ; electric lighting set with five lamps, dash lamp ; bulb horn, electric horn, clock, speedometer (these latter being fitted up as far as possible before the mounting of the body) ; luggage carrier and full kit of tools.

N.B.—Bodywork fitted to the chassis should not exceed 7½ cwt. in weight. Coachbuilder's drawings supplied on request.



14/40 h.p. Four-Cylinder Sunbeam

WITH FIVE-SEATER OPEN TOURING BODY.

THE reputation achieved by the 14/40 H.P. Sunbeam has been considerably enhanced during the past season. It combines remarkable engine performance with the security of the Sunbeam four-wheel braking system, together with a most attractive appearance.

The chassis is adapted to various types of coachwork, of which the open touring car shown above is an unusually good example. It provides seating accommodation for four or five persons, and has easily adjustable front seat to suit the requirements of the individual driver. The all-weather side curtain equipment is included with this model.

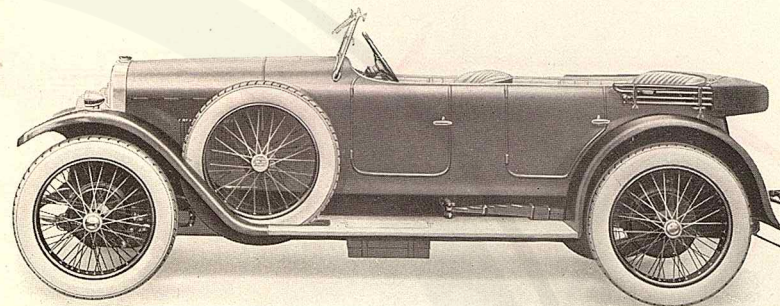
Standard colours of coachwork : claret or dark smoke blue ; chassis, wheels and wings, black upholstery in real leather of best quality ; bright metal parts finished in nickel.

Length overall, 13' 10"

Width overall, 5' 8½"

Price: £625

with equipment as follows :—Full set of Dunlop Cord tyres, spare wheel and tyre, Rotax electric starter and lighting set, with head, side and tail lamps, dash lamp, hood and hood envelope, wind screen, wind screen wiper, side curtains, bulb horn, electric horn, number plates, clock, speedometer, luggage carrier, licence holder, and full kit of tools.



14/40 h.p. Four-Cylinder Sunbeam Sports Model

WITH speed, reliability and comfort, combined in the highest degree, this 14/40 h.p. sports model is an unusually attractive medium size car. Although it has a capacity for high speed, it is equally suitable for touring, being a delightful car to drive.

The security provided by the Sunbeam four-wheel braking system is particularly valuable on a car of this type, and permits full use to be made of the wonderful power and efficiency of the engine.

The body has been specially designed and has very attractive lines. All-weather side-curtain equipment is included with this model.

Standard colours of coachwork : claret or dark smoke blue ; chassis, wheels and wings, black ; upholstery in real leather of best quality ; bright metal parts finished in nickel.

Length overall, 13' 10"

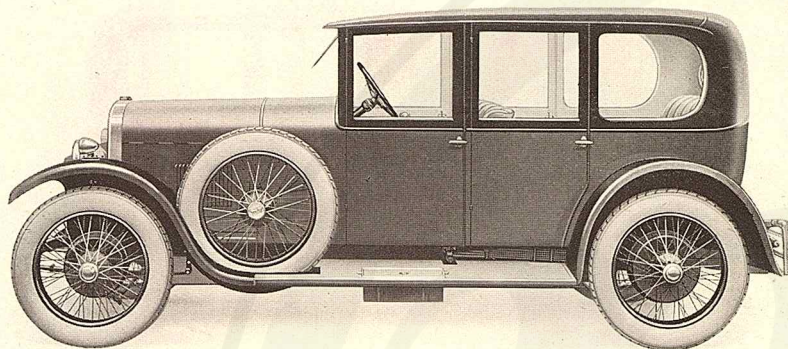
Width overall, 5' 8½"

Price: £690

with equipment as follows :—Full set of Dunlop Cord tyres, spare wheel and tyre, Hartford shock absorbers, Rotax electric starter and lighting set, with head, side and tail lamps, dash lamp, hood and hood envelope, wind screen, wind screen wiper, side curtains, bulb horn, electric horn, number plates, clock, speedometer, luggage carrier, licence holder, and full kit of tools.

Price of Chassis, including equipment as above (excepting hood and hood envelope, wind screen, wind screen wiper, side curtains, number plates, and licence holder)

£555



14/40 h.p. Four-Cylinder Sunbeam

WITH FOUR-DOOR WEYMANN SALOON BODY.

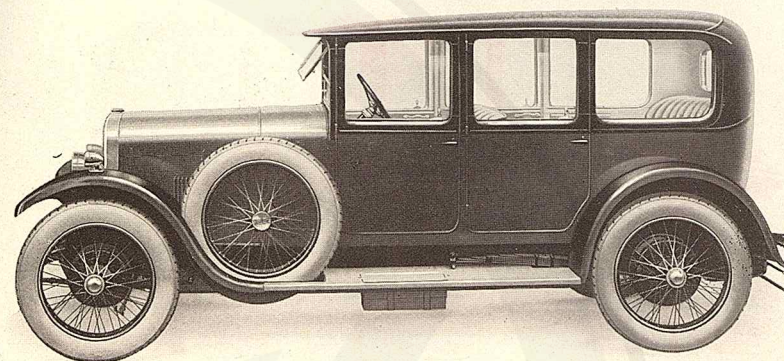
THIS Saloon Model, built on the Weymann principle, follows very closely in outline the coach-built saloon shown on the opposite page. It has all the advantages pertaining to the fabric type of body, with an exterior finish which needs little attention.

Four doors are fitted to this Weymann Saloon model as on all Sunbeam cars, and the interior is upholstered with the same care and taste as our coach-built models. For a car of this type, embodying Sunbeam quality in every detail, the price is one of its most attractive features.

Standard colours, a variety of attractive shades are available ; chassis, wheels and wings, black ; upholstery in cloth of suitable colour to match the exterior ; bright metal parts finished in nickel.
Length overall, 13' 10" Width overall, 5' 8½" Height from ground, 6'

Price: £700

with equipment as follows :—Full set of Dunlop Cord tyres, spare wheel and tyre, Rotax electric starter and lighting set, with head, side and tail lamps, dash lamp, interior light, wind screen, wind screen wiper, bulb horn, electric horn, number plates, clock, speedometer, luggage carrier, licence holder, and full kit of tools.



14/40 h.p. Four-Cylinder Sunbeam

WITH FOUR-DOOR SALOON BODY.

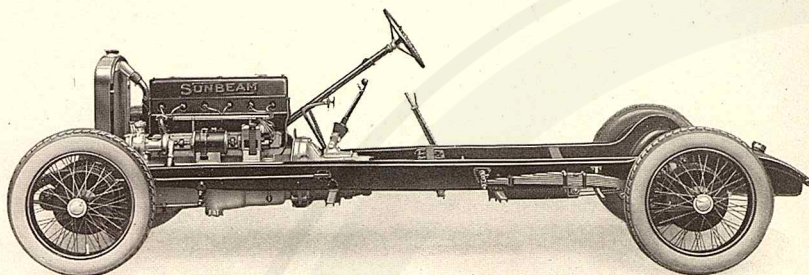
THIS fine example of Sunbeam coachwork provides ample accommodation for four or five persons, and the front seat is adjustable to suit the requirements of the individual driver. The large window lights ensure a particularly bright interior, and the four doors permit of easy entrance and exit.

Throughout its construction this saloon model exhibits the excellence and thoroughness of Sunbeam design and workmanship.

Standard colours of coachwork : claret, dark green or dark blue ; chassis, wheels and wings, black ; upholstery in Bedford cord or leather of suitable colour to match the paintwork ; bright metal parts finished in nickel.
Length overall, 13' 10" Width overall, 5' 8½" Height from ground, 6' 1"

Price: £795

with equipment as follows :—Full set of Dunlop Cord tyres, spare wheel and tyre, Rotax electric starter and lighting set, with head, side and tail lamps, dash lamp, interior light, wind screen, wind screen wiper, bulb horn, electric horn, number plates, clock, speedometer, luggage carrier, licence holder, and full kit of tools.



20/60 h.p. Six-Cylinder Sunbeam

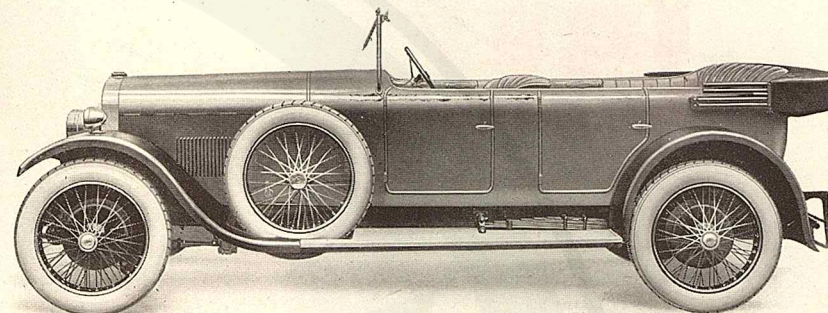
PRINCIPAL CHASSIS DIMENSIONS, ETC.

	English.	Metric.
Bore	2.95"	75 mm.
Stroke	4.72"	120 mm.
Cubic capacity of cylinders	194.25 cu. in.	3180.8 c.c.
Wheel base, Open Touring Model	10' 11 ³ / ₈ "	334 cm.
" for Closed Models ..	11' 5 ³ / ₈ "	349 cm.
Track	4' 9"	145 cm.
Ground clearance	8"	20 cm.
Length overall (short wheel base)	15' 1"	460 cm.
" (long wheel base) ..	15' 7"	475 cm.
Width overall	6' 0 ¹ / ₂ "	184 cm.
Front of dash to centre of rear axle (short wheel base)	7' 2 ¹ / ₂ "	220 cm.
Front of dash to centre of rear axle (long wheel base)	7' 8 ¹ / ₂ "	235.3 cm.
Chassis width	3' 1"	94 cm.
Gear Ratios (Open 4th 3rd 2nd 1st Reverse Touring Model) 4.72 to 1 7.94 to 1 13 to 1 18.9 to 1 16.6 to 1		
Gear Ratios (Closed 4th 3rd 2nd 1st Reverse Models) 5 to 1 8.4 to 1 13.75 to 1 20 to 1 17.6 to 1		
Tyre sizes	820 X 120 mm.
R.A.C. Rating	20.9 Tax payable ..	£21

Chassis Price: £795

Price of chassis includes front wings ; fuel tank ; four detachable wheels and one spare wheel, with tyres ; shock-absorbers ; electric starter ; electric lighting set with five lamps, dash lamp ; bulb horn, electric horn, clock, speedometer (these latter being fitted up as far as possible before the mounting of the body) ; luggage carrier, and full kit of tools.

N.B.—Bodywork fitted to this chassis should not exceed 10 cwt. in weight. Coachbuilder's drawings supplied on request.



20/60 h.p. Six-Cylinder Sunbeam

WITH FIVE-SEATER OPEN TOURING BODY.

THE 20/60 H.P. Model is unquestionably the most efficient car of its type ever produced. The wonderful power and flexibility of the engine provides a reserve of speed for every need, with safety always assured by the reliability of the Sunbeam four-wheel brakes.

The low slung chassis frame has ample width at the rear, accommodating a commodious and comfortable five-seater body. The body lines are very attractive, and the quality of the usual high Sunbeam standard. All-weather side-curtain equipment is included.

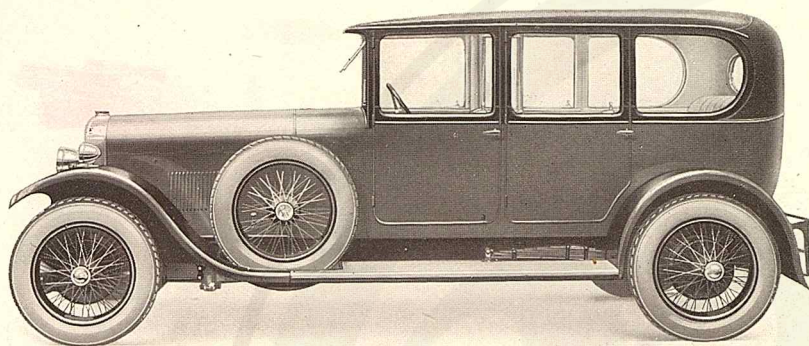
Standard colours of coachwork : claret or dark smoke blue ; chassis, wheels and wings, black ; upholstery in real leather of best quality ; bright metal parts, finished in nickel.

Length overall, 15' 1"

Width overall, 6' 0¹/₂"

Price: £950

with equipment as follows :—Full set of Dunlop Cord tyres, spare wheel and tyre, Hartford shock-absorbers, Rotax electric starter and lighting set, with head, side and tail lamps, dash lamp, hood and hood envelope, wind screen, wind screen wiper, side curtains, bulb horn, electric horn, number plates, clock, speedometer, luggage carrier, licence holder, and full kit of tools.



20/60 h.p. Six-Cylinder Sunbeam

WITH ENCLOSED LIMOUSINE BODY.

THE 20/60 H.P. Limousine is a very handsome type of closed car, with ample accommodation, the rear seat providing comfortable space for three persons. There are also two occasional seats which fold back when not in use.

The front seat is divided from the rear compartment by a division having sliding glass panels in the upper portion. The windows slide in felt lined channels. The coachwork and fittings exhibit the inimitable Sunbeam quality and taste, even to the smallest details.

The saloon body is similar in its proportions, except that it has no division between the seats and no folding occasional seats.

Standard colours of coachwork : claret, dark green or dark blue ; chassis, wheels and wings, black ; upholstery in Bedford cord or real leather of suitable colour to match the paintwork ; bright metal parts finished in nickel.

Length overall, 15' 7"

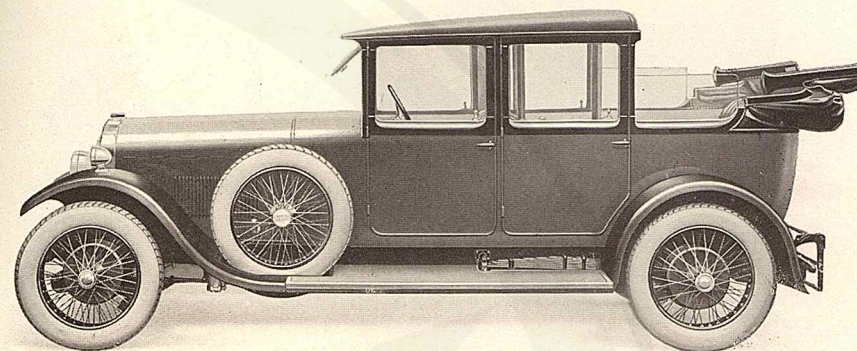
Width overall, 6' 0½"

Height from ground, 6' 4½"

Price, with Enclosed Limousine Body £1,250

,, with Saloon Body - - - £1,200

with equipment as follows :—Full set of Dunlop Cord tyres, spare wheel and tyre, Hartford shock-absorbers, Rotax electric starter and lighting set, with head, side and tail lamps, dash lamp, interior light, wind screen, wind screen wiper, bulb horn, electric horn, number plates, clock, speedometer, speaking tube, luggage carrier, licence holder, and full kit of tools.



20/60 h.p. Six-Cylinder Sunbeam

WITH ENCLOSED LANDAULETTE BODY.

ALTHOUGH following very closely the lines of the Enclosed Limousine illustrated on the opposite page, the Landaulette model possesses the very desirable feature that the rear portion of the body can be folded down for fine weather. When the head is raised, the appearance is almost identical with the Enclosed Limousine.

The interior accommodation is the same as that embodied in the Enclosed Limousine model, including the two folding occasional seats. There is also the division, with sliding glass panels in the upper portion, between the front and rear seats.

Standard colours of coachwork : claret, dark green or dark blue ; chassis, wheels and wings, black ; upholstery in Bedford cord or real leather of a suitable colour to match the paintwork ; bright metal parts finished in nickel.

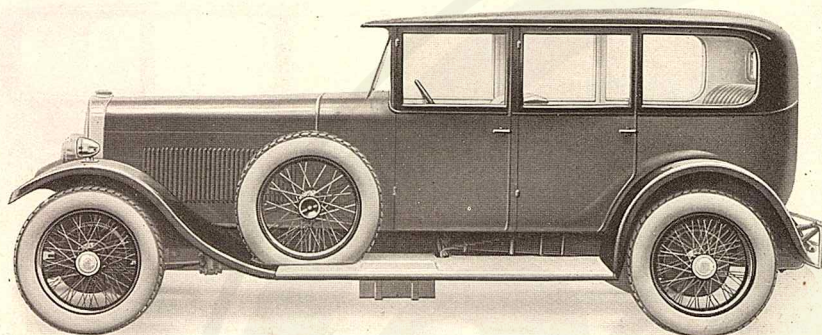
Length overall, 15' 7"

Width overall, 6' 0½"

Height from ground, 6' 4½"

Price: £1,275

with equipment as follows :—Full set of Dunlop Cord tyres, spare wheel and tyre, Hartford shock-absorbers, Rotax electric starter and lighting set, with head, side and tail lamps, dash lamp, interior light, wind screen, wind screen wiper, bulb horn, electric horn, number plates, clock, speedometer, speaking tube, luggage carrier, licence holder, and full kit of tools.



30/90 h.p. Eight-Cylinder Sunbeam

WITH FOUR-DOOR WEYMANN SALOON BODY.

THE Weymann Saloon Model of the new 30/90H.P. is built on the shorter wheelbase chassis of 11ft. 5 $\frac{3}{8}$ in. On this car the power and rapid acceleration of the new eight-cylinder engine is combined with a closed body providing complete comfort, and having an exterior finish which requires very little attention to maintain.

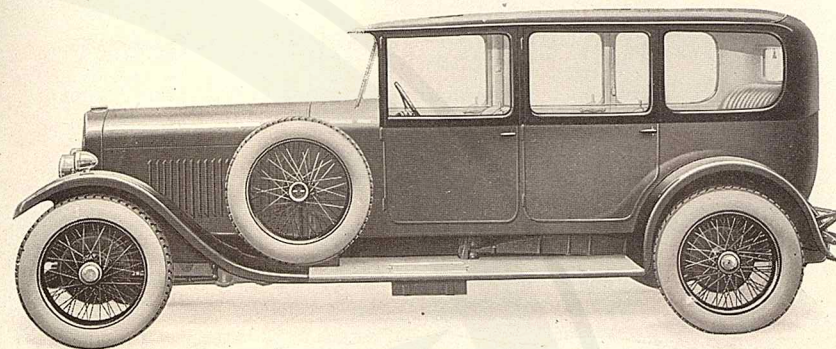
This Saloon has been most carefully designed and retains the interior comfort and luxuriousness of a coach-built model, with all the advantages pertaining to the Weymann type of body. The appearance is very attractive, the long bonnet line of the eight-cylinder engine blending with the body and making a most distinguished looking vehicle.

Standard colours : a variety of attractive shades are available ; chassis, wheels and wings, black ; upholstery in cloth of suitable colour to match the exterior ; bright metal parts finished in nickel.
Length overall, 15' 7"

Width overall, 6' 0 $\frac{1}{2}$ "

Price: £1,425

with equipment as follows :—Full set of Dunlop Cord tyres, spare wheel and tyre, Hartford shock-absorbers, Rotax electric starter and lighting set, with head, side and tail lamps, two dash lamps, interior light, clock, speedometer, wind screen, wind screen wiper, bulb horn, electric horn, number plates, petrol tank gauge, driving mirror, luggage carrier, licence holder, and full kit of tools.



30/90 h.p. Eight-Cylinder Sunbeam

WITH ENCLOSED LIMOUSINE BODY.

FOR some considerable time past there has been a demand for a Sunbeam chassis capable of carrying larger coachwork than the 20/60h.p. model. The introduction of the 30/90h.p. "straight-eight," with the ample wheelbase of 12ft. 3ins. will now enable this demand to be met.

The Limousine model illustrated here is a superb car. The front seat, together with glass panelled division, is adjustable over a range of several inches. Two occasional seats, which are removable when not required, are fitted in the rear compartment. The body is beautifully proportioned and exquisitely finished.

The Landaulette model is similar in its general design and in the accommodation provided, but the rear portion folds down in a similar manner to the 20/60h.p. model, illustrated on page 17.

Standard colours of coachwork : claret, dark green or dark blue ; chassis, wheels and wings, black ; upholstery in Bedford cord or hide of a suitable colour to match the paintwork ; bright metal parts finished in nickel.

Length overall, 16' 9"

Width overall, 6' 2 $\frac{1}{2}$ "

Price: £1,850

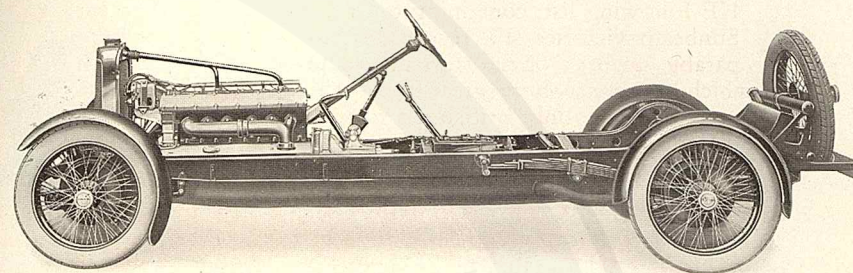
THE PRICE OF THE ENCLOSED LANDAULETTE MODEL IS ALSO £1,850

with equipment as follows :—Full set of Dunlop Cord tyres, spare wheel and tyre, Hartford shock absorbers, Rotax electric starter and lighting set with head, side and tail lamps, two dash lamps, clock, speedometer, wind screen, wind screen wiper, bulb horn, electric horn, number plates, petrol tank gauge, concealed speaking tube, driving mirror, luggage carrier, licence holder, and full kit of tools.

The Supremacy of the Sunbeam

THE following list, containing but a few of the many recent Sunbeam victories and records, is eloquent of the incomparable qualities of the supreme Sunbeam, the only British car which has ever won the great European race—the Grand Prix de France, and the only British car to finish in the 1925 Grand Prix d'Endurance (24 hours race).

- 1919 Gaillon Hill Climb, SUNBEAM set up new record at a speed of over 109 m.p.h.
- 1921 Shelsley Walsh Hill Climb, SUNBEAM set up new record for the hill in $52\frac{1}{8}$ secs.
- 1922 Isle-of-Man T.T. Race, SUNBEAM First.
- 1923 Grand Prix de France, SUNBEAMS First, Second and Fourth.
- 1923 Spanish Grand Prix, SUNBEAM First.
- 1924 European Grand Prix, the fastest circuit and highest speed recorded were accomplished on SUNBEAMS.
- 1924 Spanish Grand Prix, SUNBEAM First.
- 1924 Pendine Sands, a SUNBEAM covered the kilometre (flying start) at a speed of 146.16 m.p.h. World's record speed. (Since beaten by the same Sunbeam car).
- 1925 New Zealand Motor Cup (50 miles), won by an 11 year old SUNBEAM.
- 1925 Australasian 5 mile Motor Beach Record set up on an 11 year old SUNBEAM.
- 1925 Shelsley Walsh Hill Climb, fastest time of the day secured by two-litre SUNBEAM.
- 1925 Grand Prix d'Endurance. The SUNBEAM was the only British car to finish, covering 1,342 miles in the 24 hours. Special awards for the most comfortable bodywork and for the greatest distance covered during the first hour of the race were also secured by SUNBEAM cars.
- 1925 Pendine Sands, World's Record Speeds (subject to official confirmation) of 150.766 m.p.h. for the mile, and 150.869 m.p.h. for the kilometre accomplished on a SUNBEAM.
- 1925 Klausen Hill Climb—Europe's leading hill climb—won at phenomenal speed by a SUNBEAM, beating all previous records.



Three-Litre Six-Cylinder Sunbeam

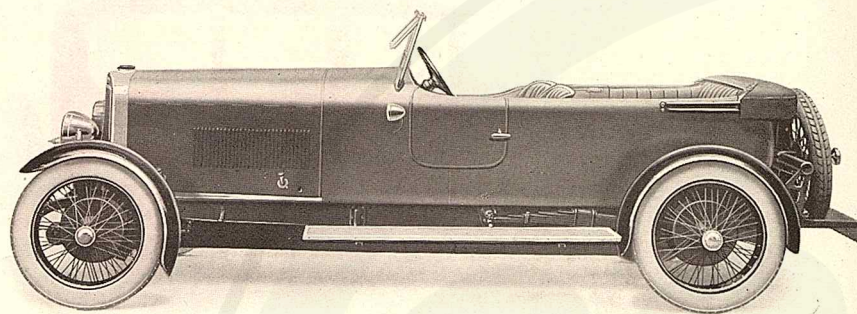
PRINCIPAL CHASSIS DIMENSIONS, ETC.

				English.	Metric.	
Bore	2.95"	75 mm.	
Stroke	4.33"	110 mm.	
Cubic capacity of cylinders	..	178.12	cu. in.		2920 c.c.	
Wheel base	10' 10½"	331.4 cm.	
Track	4' 7"	140 cm.	
Ground clearance	8"	20 cm.	
Length overall	15' 11"	485 cm.	
Width overall	5' 6"	168 cm.	
Front of dash to centre of rear axle	6' 11⅜"	211 cm.	
Chassis width	2' 9½"	85 cm.	
		4th	3rd	2nd	1st	Reverse
Gear ratios	..	4.5 to 1	6 to 1	7.43 to 1	14.32 to 1	10.65 to 1
Tyre sizes	820 × 120 mm.	
R.A.C. Rating	..	20.9		Tax Payable	..	£21

Chassis Price: £950

Price of Chassis includes front wings, rear wings, fuel tank, four detachable and one spare wheel, with tyres, shock-absorbers, electric starter, electric lighting set with five .amps, dash lamp, bulb horn, electric horn, clock, speedometer, Boyce motometer, revolution counter (these latter being fitted up as far as possible before the mounting of the body), and full kit of tools.

N.B.—Bodywork fitted to this chassis should not exceed 8 $\frac{3}{4}$ cwt. in weight. Coachbuilder's drawings supplied on request.



Three-Litre Six-Cylinder Sunbeam Super Sports Model

IN the Three-Litre Sunbeam, our unrivalled experience in the design and manufacture of racing and sports cars has been focussed upon the production of a super-sports car which will worthily uphold the prestige of the Sunbeam name. As a particularly fast car, comfortable to drive, and with the security of the Sunbeam four-wheel brakes, it stands in a class by itself. The six-cylinder overhead valve engine, with valves operated by overhead camshafts, is extraordinarily efficient.

The four-seater body has been specially designed for this chassis, and is a fine example of Sunbeam coachwork. The driving seat is adjustable, and hood and side curtains giving protection against inclement weather are included in the standard equipment.

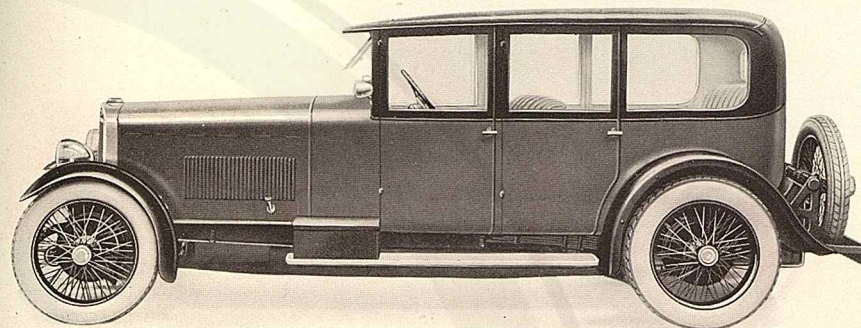
Standard colours of coachwork : claret or dark smoke blue ; chassis, wheels and wings, black ; upholstery in real leather of best quality ; bright metal parts finished in nickel.

Length overall, 15' 11"

Width overall, 5' 6"

Price: £1,125

with equipment as follows :—Full set of Dunlop Cord tyres, spare wheel and tyre, Hartford shock-absorbers, Rotax electric starter and lighting set, with head, side and tail lamps, dash lamp, special hood and hood envelope, wind screen, side curtains, bulb horn, electric horn, number plates, clock, speedometer, Boyce motometer, revolution counter, licence holder, and full kit of tools.



Three-Litre Six-Cylinder Sunbeam

WITH FOUR-DOOR WEYMANN SALOON BODY.

FOR an enclosed car on a chassis of this type, the Weymann method of body construction is particularly suitable. The flexibility of the body work, the freedom from tendency for body noises to develop, and the curtailment of excessive weight, are all desirable factors on a car designed expressly for high-speed travel.

In appearance this Saloon model possesses lines which are distinctly individual. The low chassis and running boards permit of easy entrance and exit, and with the resulting low centre of gravity the car holds the road perfectly even at the highest speeds. The front seat is adjustable and the windows are fitted with mechanical regulators, enabling them to be opened to any desired point.

Standard colours : a variety of attractive shades are available ; chassis, wheels and wings, black ; upholstery in cloth of suitable colour to match the exterior ; bright metal parts finished in nickel.

Length overall, 15' 11"

Width overall, 5' 6"

Height from ground, 5' 9½"

Price: £1,250

with equipment as follows :—Full set of Dunlop Cord tyres, spare wheel and tyre, Hartford shock-absorbers, Rotax electric starter and lighting set, with head, side and tail lamps, dash lamp, interior light, wind screen, bulb horn, electric horn, number plates, clock, speedometer, Boyce motometer, revolution counter, licence holder, and full kit of tools.

"The Purchaser shall accept and pay for the car or chassis ordered by him when same is ready for delivery.

"The sale is made at the Company's catalogue or list price current at the time the order is accepted, but the Company reserves the right to alter its catalogue or list prices at any time, and will invoice at the prices current at the date of delivery, but the Purchaser may, within 14 days after being notified of an increase in price, cancel this order, in which case any deposit paid thereon will be returned.

"AGENTS. The term 'Agent' applied to a Dealer in the Company's Cars is used in a complimentary sense only, and the relationship of principal and agent does not in fact exist between the Company and the Dealer. No Dealer is authorised to act on behalf of the Company or to give any warranty or make any representations to a Purchaser on the Company's behalf.

"If the Purchaser fails to carry out his obligations hereunder, the Company may thereupon or at any time thereafter cancel this agreement, and forfeit any deposit paid thereon "

GUARANTEE

The Company guarantees that all precautions which are usual and reasonable have been taken by them to secure excellence of material and workmanship. This guarantee is applicable only to new cars or chassis or parts thereof, and is to be in force for one year only from the date when the car or chassis was delivered new from the Company's works. The liability of the Company is limited to the replacement (free at the Company's works) of the part or parts found to be defective, and no guarantee is given in respect of defects caused by wear and tear, accident, misuse, or neglect.

If a defective part be found in any car or chassis it must be sent to the Company's Works, carriage paid, with an advice under separate cover stating the number of the chassis, as shown by the Company's number plate, the name of the dealer (if any) from whom it was purchased, the date of purchase, and an intimation that the sender desires to have it replaced or made good free of charge under this guarantee. Parts returned to the Works without such advice will be at the risk of the sender, and this guarantee shall not be enforceable.

The Company is not responsible for any expense a purchaser may be put to in removing any part to be sent for inspection or in replacing same or any new part supplied in lieu thereof.

Only cars or chassis bought direct from the Company, or from one of their duly authorised dealers, are guaranteed, and the Company does not guarantee or accept responsibility for accessories not made by them or for fixing. Many of these accessories are novelties with which the Company's workmen are not familiar, and should be fixed (if at all) by persons who are acquainted with them.

The chassis supplied by the Company are intended to be fitted with bodies similar in weight and character to those shown in the Company's catalogue, and the foregoing Guarantee will not apply to any chassis upon which coachwork not of the Company's manufacture is fitted, unless the Company is allowed to inspect, test and finally approve of the complete car before it is used.

This guarantee is given and shall be accepted in substitution for any warranty or guarantee implied by statute or otherwise as to the Company's cars or chassis, and any such implied warranty or guarantee is hereby excluded. The Company do not give any guarantee in respect of second-hand goods sold by them.

Silk & Terry Ltd.
Printers
Birmingham

Where Cars are required for use overseas

we supply special models embodying certain modifications to suit the arduous conditions under which cars are used. Full particulars will be supplied by our Export Department, 12 Princes Street, Hanover Square, London, W.1. and we recommend clients who intend taking their cars abroad to acquaint us of this fact at the time of placing their orders.

INSTITUTE

