

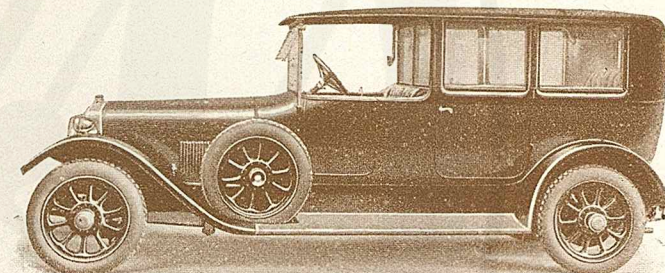
THIRD EDITION.

C. F. DINGWALL.

SUNBEAM CARS

PRICE LIST OF
1922 MODELS

PROPERTY OF THE
ROYAL AUTOMOBILE CLUB MOTORING LIBRARY
NOT TO BE TAKEN AWAY



24/60 H.P. 5 CYLINDER LIMOUSINE LANDAULETTE.

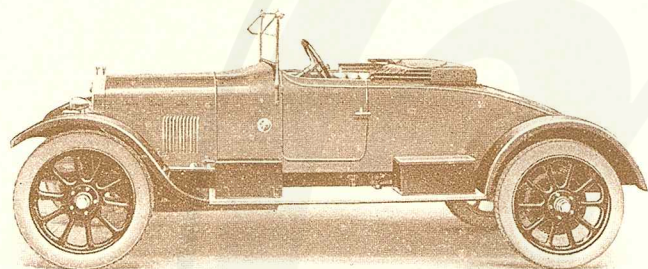
THE SUNBEAM MOTOR CAR CO. L^{TD}
WOLVERHAMPTON

LONDON SHOWROOMS - - - 12 PRINCES ST., HANOVER SQ., W. 1
MANCHESTER SHOWROOMS - - - 106 DEANSGATE
EXPORT DEPT. - - - 12 PRINCES ST., HANOVER SQ., LONDON, W. 1

Southern Service and Repair Works : 177 THE VALE, ACTON, LONDON, W. 3
Northern Service and Repair Works: 288/94 ECCLES NEW ROAD, WEASTE, MANCHESTER

The 14 h.p. 4 cylinder "Sunbeam"

This new model has been designed in response to the demand for a moderately priced light car of low Treasury rating and tax, and yet capable of good speed. It has proved itself thoroughly reliable and efficient on test, and has exceptional speed and hill climbing ability. (Tax £13.)



14 H.P. TWO-SEATER MODEL.

Brief Specification. Engine, Clutch and Gear Box in one unit; four cylinders, 72×120 m.m. in monobloc casting; detachable head; overhead valves; push rod and rocker valve mechanism; forced lubrication; pump cooling; self starter and electric lighting set; single plate clutch; three-speed forward and reverse gear box; enclosed propellor shaft; helical bevel final drive; front springs, semi-elliptic; rear springs, cantilever type; both brakes in drums on rear wheels; right hand change speed and brake levers; worm and sector steering, adjustable for rake; detachable steel wheels.

	Prices.	
CHASSIS	-	£575

Painted one coat only, including front wings, fuel tank, four detachable wheels and one spare wheel fitted with 815x105 Dunlop tyres, self starter, lighting equipment, five lamps, horn, speedometer.

FOUR SEATER TOURING CAR	-	£725
-------------------------	---	------

TWO SEATER TOURING CAR, with Dickey Seat	-	£725
--	---	------

Complete with equipment as follows: Full set of Dunlop tyres, 815x105, fifth wheel and tyre, electric lighting set and self starter, hood and hood envelope, windscreen, bulb horn, number plates, speedometer, and full kit of tools.

Standard colour of bodywork, grey. Upholstery in dark blue leather. Chassis, wheels and wings painted black. Nickel finish to all bright metal parts.

All Prices are quoted subject to the usual terms of business and Guarantee as published in the Company's complete catalogue.

Sunbeam

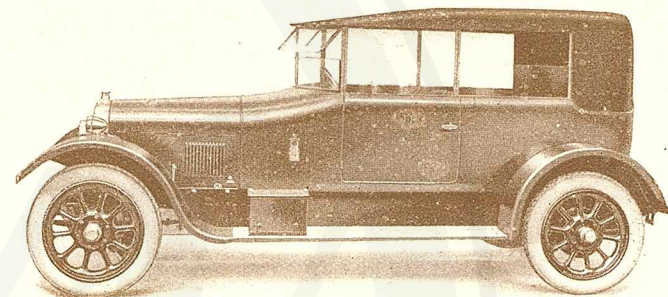
C. F. DINGWALL.

All-Weather Type Bodywork

As Fitted to . .

16/40 h.p. and 24/60 h.p.

SUNBEAM CARS



16/40 H.P. 4 CYLINDER CHASSIS WITH ALL-WEATHER BODY.

THIS type of body is becoming increasingly favoured, particularly by the large class of owner-drivers. The object of the makers is to combine the comfort of the closed carriage with the advantages of the open touring car; to provide a type of head which will give adequate protection against inclement weather when raised, and yet which is capable of being easily lowered when touring under ordinary, fine weather conditions.

In appearance it is distinctive, whether in the open or closed position, and to effect the change from one position to the other is simply the work of a minute or two for a single person. When the head is used in the closed position, the interior of the car is excellently lighted by the four large plate glass windows which are arranged to fall within the sides of the bodywork when the head is lowered.

Prices:

Mounted on 16/40 h.p. Standard Chassis	-	£1085
„ 24/60 h.p. Standard Chassis	-	£1420

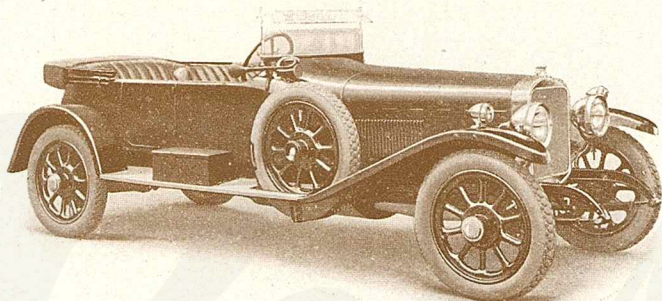
With Equipment as follows: Full set of tyres, fifth wheel and tyre, electric lighting set, self-starter, bulb horn, number plates, clock, speedometer, and full kit of tools.

Standard Colours, Upholstery, and finish as in other Touring Models.

Sunbeam

The 24/60 h.p. 6 cylinder "Sunbeam"

These chassis are likewise practically identical with last season's models, with the exception that a new and much more powerful overhead valve engine is fitted as standard, giving remarkable hill climbing ability and very high road speed. (Tax £24.)



24/60 H.P. 6 CYLINDER LIGHT TOURING MODEL.

Brief Specification. Six cylinders, 80x150 m/m in monobloc iron casting; detachable head; overhead valves operated by push rods and rockers; magneto ignition; forced lubrication; pump and fan cooling; self starter and electric lighting equipment; leather faced cone clutch; four-speed and reverse gear box; open propellor shaft; helical bevel final drive; semi-elliptic front and rear springs, the latter underslung; foot-brake operating in drum on transmission; hand-brake on rear wheels; right-hand controls; worm and sector steering; detachable steel wheels.

Prices.

CHASSIS (For Open Cars)	-	-	-	£1025
CHASSIS, with Long Wheel Base (for Closed Cars)	-	-	-	£1050

Painted one coat only, including front wings, fuel tank, four detachable wheels and one spare wheel fitted with Dunlop tyres, 820x120 m/m (for open cars), 895x135 m/m (for closed cars), self starter, lighting equipment, five lamps, horn, clock, speedometer.

FIVE SEATER TOURING CAR	-	-	-	£1295
FOUR SEATER LIGHT TOURING CAR	-	-	-	£1295

(Upholstered in dark blue leather.)

LIMOUSINE LANDAULETTE	-	-	-	£1625
SALOON	-	-	-	£1650

(Upholstered in leather or Bedford cord at option of purchaser.)

Complete with equipment as follows: Full set of Dunlop tyres, 820x120 m/m (for open cars), 895x135 m/m (for closed cars), fifth wheel and tyre, electric lighting set and self starter, hood and hood envelope (for open cars), windscreen, bulb horn, number plates, speedometer, clock, and full kit of tools.

Standard colours of bodywork: Five-seater Touring Car and Four-seater Light Touring Car, grey; Limousine Landaulette and saloon, claret, dark green, or dark blue. Chassis, wheels and wings painted black. Nickel finish to all bright metal parts.

All Prices are quoted subject to the usual terms of business and Guarantee as published in the Company's complete catalogue.

Sunbeam

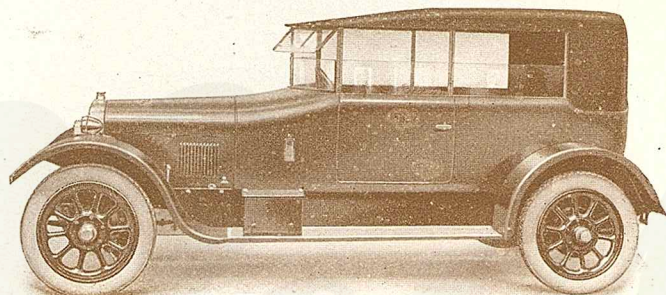
C. F. DINGWALL.

All-Weather Type Bodywork

As Fitted to . .

16/40 h.p. and 24/60 h.p.

SUNBEAM CARS



16/40 H.P. 4 CYLINDER CHASSIS WITH ALL-WEATHER BODY.

THIS type of body is becoming increasingly favoured, particularly by the large class of owner-drivers. The object of the makers is to combine the comfort of the closed carriage with the advantages of the open touring car; to provide a type of head which will give adequate protection against inclement weather when raised, and yet which is capable of being easily lowered when touring under ordinary, fine weather conditions.

In appearance it is distinctive, whether in the open or closed position, and to effect the change from one position to the other is simply the work of a minute or two for a single person. When the head is used in the closed position, the interior of the car is excellently lighted by the four large plate glass windows which are arranged to fall within the sides of the bodywork when the head is lowered.

Prices:

<i>Mounted on 16/40 h.p. Standard Chassis</i>	-	£1085
<i>„ 24/60 h.p. Standard Chassis</i>	-	£1420

With Equipment as follows: Full set of tyres, fifth wheel and tyre, electric lighting set, self-starter, bulb horn, number plates, clock, speedometer, and full kit of tools.

Standard Colours, Upholstery, and finish as in other Touring Models.

Sunbeam